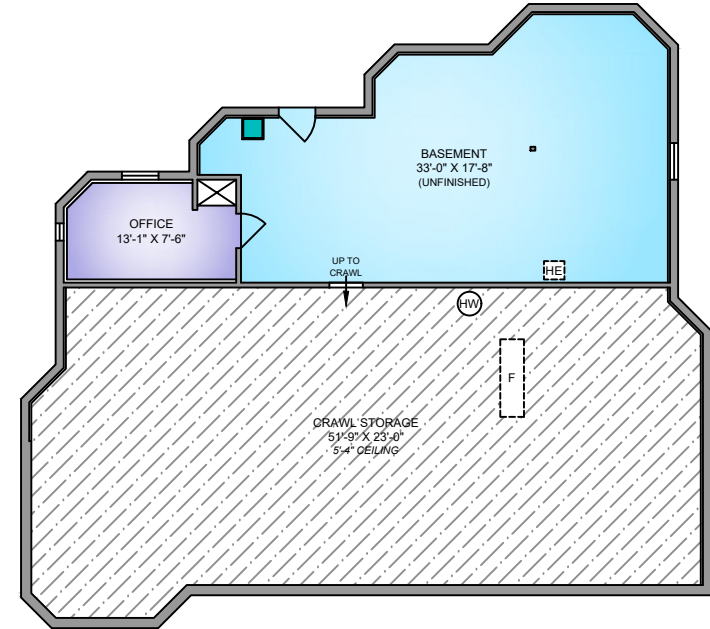
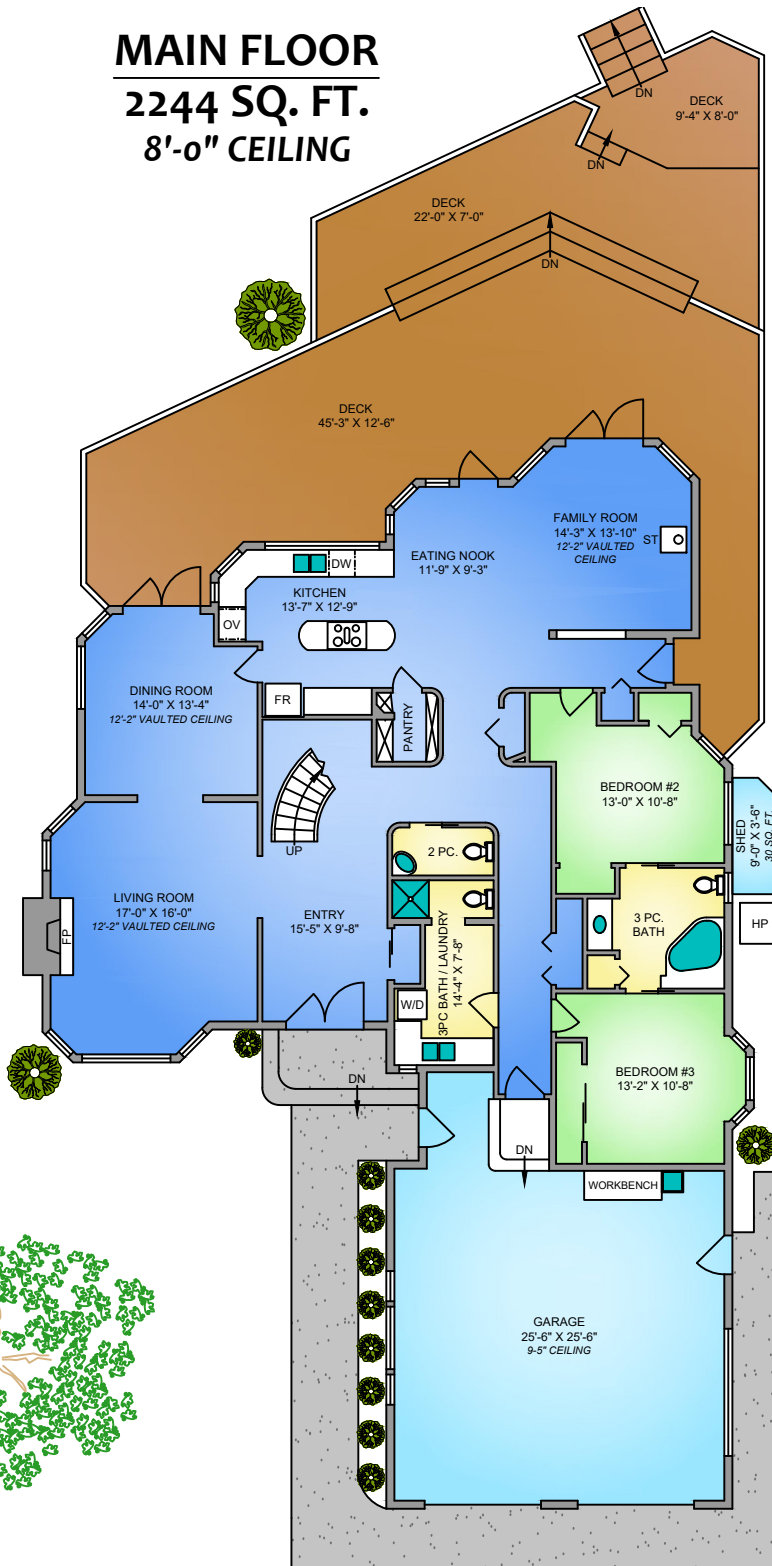
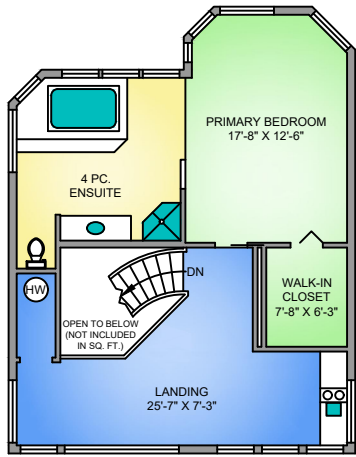


MAIN FLOOR
2244 SQ. FT.
8'-0" CEILING

UPPER FLOOR
817 SQ. FT.
12'-2" VAULTED CEILING

LOWER FLOOR
763 SQ. FT.
6'-6" CEILING

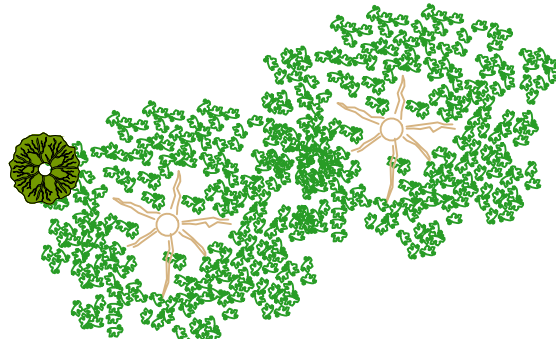


NORTH



0' 5' 10'

SCALE



506 PANORAMA PLACE				
APRIL 29, 2026				
This floor plan has been laser measured and drafted by a professional Drafting Technician using AutoCAD software. ANSI Z765-2021 Method for Single-Family Residential Buildings used in calculating Area. Private resale or modification of this copyrighted document to a third party by any individual or entity, other than the original creator is strictly prohibited. Plans may not be 100% accurate. Buyer must verify any critical measurement.				
FLOOR	AREA (SQ. FT.)			
	FINISHED	UNFINISHED	GARAGE	DECK / PATIO
MAIN	2244	-	769	1276
UPPER	817	-	-	-
TOTAL	3061	-	769	1276
BASEMENT	124	639	-	-