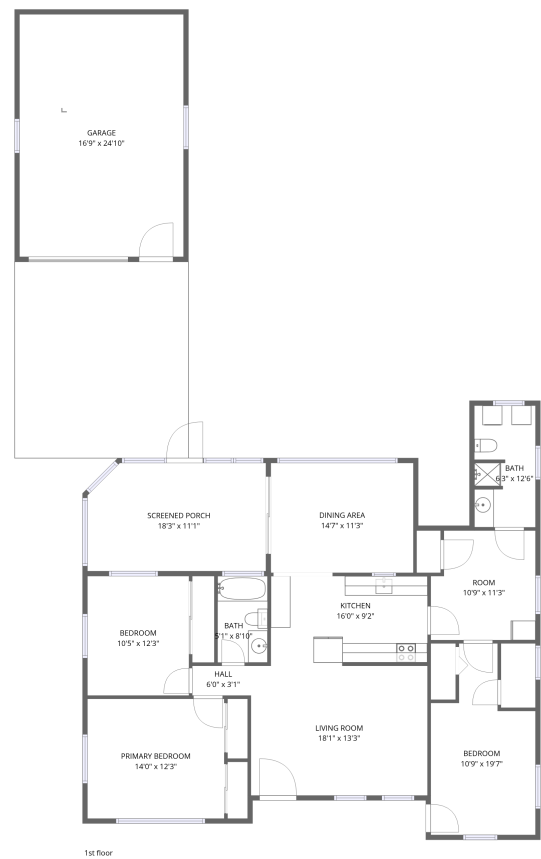


4 Carl Court, Beverly Hills, Citrus County, Florida, United States, 34465



Total Area: 1420 sq. ft

1st Floor: 1420 sq. ft

Excluded: Screened porch 197 sq. ft, Garage 417 sq. ft, Walls: 156 sq. ft

Property summary

1 Floors

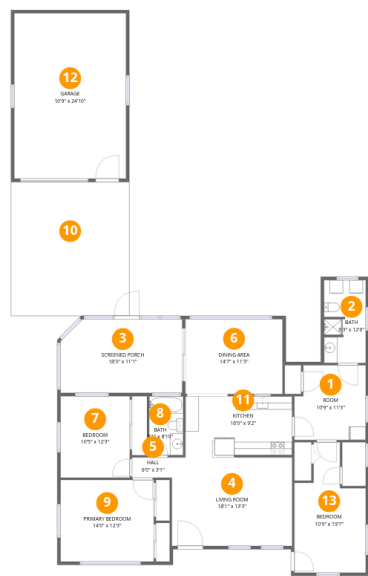
3 Bedrooms

2 Bathrooms

1 Garages

Home data report

4 Carl Court, Beverly Hills, Citrus County, Florida, United States, 34465



Room dimensions

Floor 1

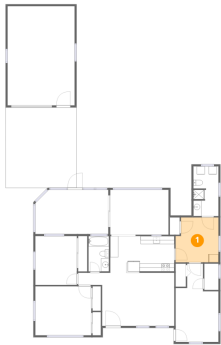
Total:1420sqft Excluded: 614sqft

#		Dimensions	sqft	Counted as living area
1	Room	10'9" x 11'3"	120 sq. ft	Yes
2	Bath	6'3" x 12'6"	78 sq. ft	Yes
3	Screened Porch	18'3" x 11'1"	202 sq. ft	No
4	Living Room	18'1" x 13'3"	240 sq. ft	Yes
5	Hall	6'0" x 3'1"	18 sq. ft	Yes
6	Dining Area	14'7" x 11'3"	164 sq. ft	Yes
7	Bedroom	10'5" x 12'3"	127 sq. ft	Yes
8	Bath	5'1" x 8'10"	45 sq. ft	Yes
9	Primary Bedroom	14'0" x 12'3"	172 sq. ft	Yes
10	Driveway	17'9" x 20'1"	357 sq. ft	No
11	Kitchen	16'0" x 9'2"	147 sq. ft	Yes

4 Carl Court, Beverly Hills, Citrus County, Florida, United States, 34465

#		Dimensions	sqft	Counted as living area
12	Garage	16'9" x 24'10"	417 sq. ft	No
13	Bedroom	10'9" x 19'7"	210 sq. ft	Yes

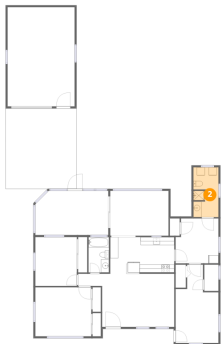
1 Floor 1 - Room



Dimensions: 10'9" x 11'3"
Area: 120 sq. ft
Counted as living area: Yes

Heated: Yes
Finished: Yes
Enclosed: Yes
Contiguous: Yes
Permitted: Yes
Wet space: No
Addition: No
Conversion: No

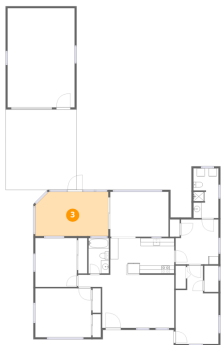
2 Floor 1 - Bath



Dimensions: 6'3" x 12'6"
Area: 78 sq. ft
Counted as living area: Yes

Heated: Yes
Finished: Yes
Enclosed: Yes
Contiguous: Yes
Permitted: Yes
Wet space: Yes
Addition: No
Conversion: No

3 Floor 1 - Screened Porch



Dimensions: 18'3" x 11'1"
Area: 202 sq. ft
Counted as living area: No

Heated: No
Finished: No
Enclosed: No
Contiguous: Yes
Permitted: Yes
Wet space: No
Addition: No
Conversion: No

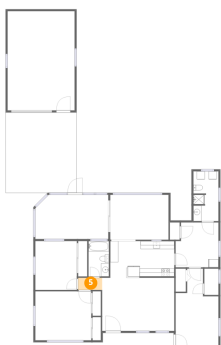
4 Floor 1 - Living Room



Dimensions: 18'1" x 13'3"
Area: 240 sq. ft
Counted as living area: Yes

Heated: Yes
Finished: Yes
Enclosed: Yes
Contiguous: Yes
Permitted: Yes
Wet space: No
Addition: No
Conversion: No

5 Floor 1 - Hall

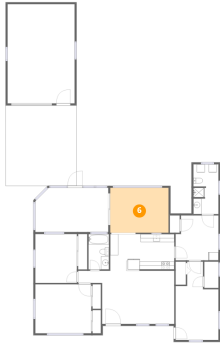


Dimensions: 6'0" x 3'1"
Area: 18 sq. ft
Counted as living area: Yes

Heated: Yes
Finished: Yes
Enclosed: Yes
Contiguous: Yes
Permitted: Yes
Wet space: No
Addition: No
Conversion: No

4 Carl Court, Beverly Hills, Citrus County, Florida, United States,
34465

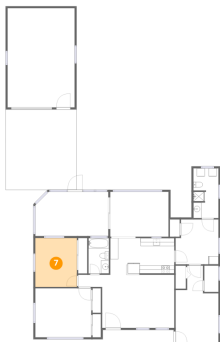
6 Floor 1 - Dining Area



Dimensions: 14'7" x 11'3"
Area: 164 sq. ft
Counted as living area: Yes

Heated: Yes
Finished: Yes
Enclosed: Yes
Contiguous: Yes
Permitted: Yes
Wet space: No
Addition: No
Conversion: No

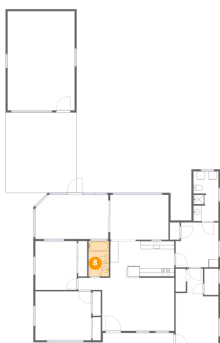
7 Floor 1 - Bedroom



Dimensions: 10'5" x 12'3"
Area: 127 sq. ft
Counted as living area: Yes

Heated: Yes
Finished: Yes
Enclosed: Yes
Contiguous: Yes
Permitted: Yes
Wet space: No
Addition: No
Conversion: No

8 Floor 1 - Bath

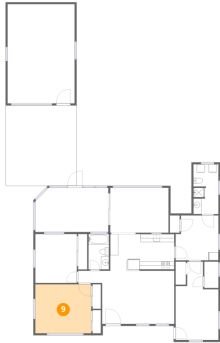


Dimensions: 5'1" x 8'10"
Area: 45 sq. ft
Counted as living area: Yes

Heated: Yes
Finished: Yes
Enclosed: Yes
Contiguous: Yes
Permitted: Yes
Wet space: Yes
Addition: No
Conversion: No

4 Carl Court, Beverly Hills, Citrus County, Florida, United States, 34465

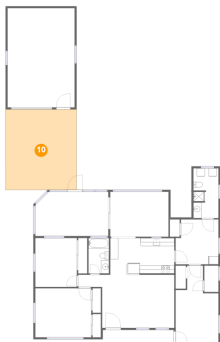
9 Floor 1 - Primary Bedroom



Dimensions: 14'0" x 12'3"
Area: 172 sq. ft
Counted as living area: Yes

Heated: Yes
Finished: Yes
Enclosed: Yes
Contiguous: Yes
Permitted: Yes
Wet space: No
Addition: No
Conversion: No

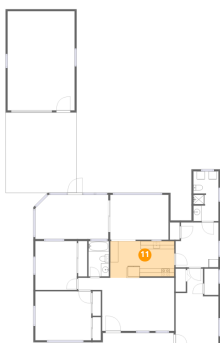
10 Floor 1 - Driveway



Dimensions: 17'9" x 20'1"
Area: 357 sq. ft
Counted as living area: No

Heated: No
Finished: No
Enclosed: No
Contiguous: Yes
Permitted: No
Wet space: No
Addition: No
Conversion: No

11 Floor 1 - Kitchen

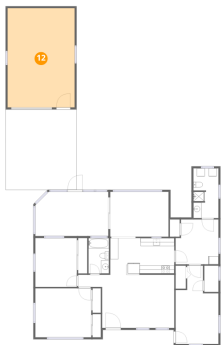


Dimensions: 16'0" x 9'2"
Area: 147 sq. ft
Counted as living area: Yes

Heated: Yes
Finished: Yes
Enclosed: Yes
Contiguous: Yes
Permitted: Yes
Wet space: No
Addition: No
Conversion: No

4 Carl Court, Beverly Hills, Citrus County, Florida, United States, 34465

12 Floor 1 - Garage



Dimensions: 16'9" x 24'10"
Area: 417 sq. ft
Counted as living area: No

Heated: No
Finished: No
Enclosed: Yes
Contiguous: Yes
Permitted: Yes
Wet space: No
Addition: No
Conversion: No

13 Floor 1 - Bedroom



Dimensions: 10'9" x 19'7"
Area: 210 sq. ft
Counted as living area: Yes

Heated: Yes
Finished: Yes
Enclosed: Yes
Contiguous: Yes
Permitted: Yes
Wet space: No
Addition: No
Conversion: No