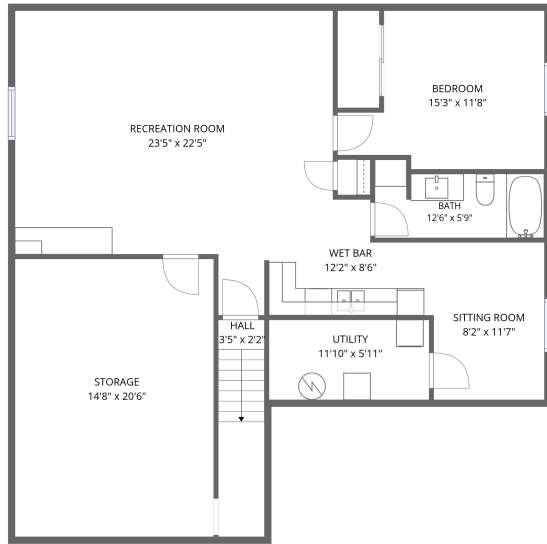
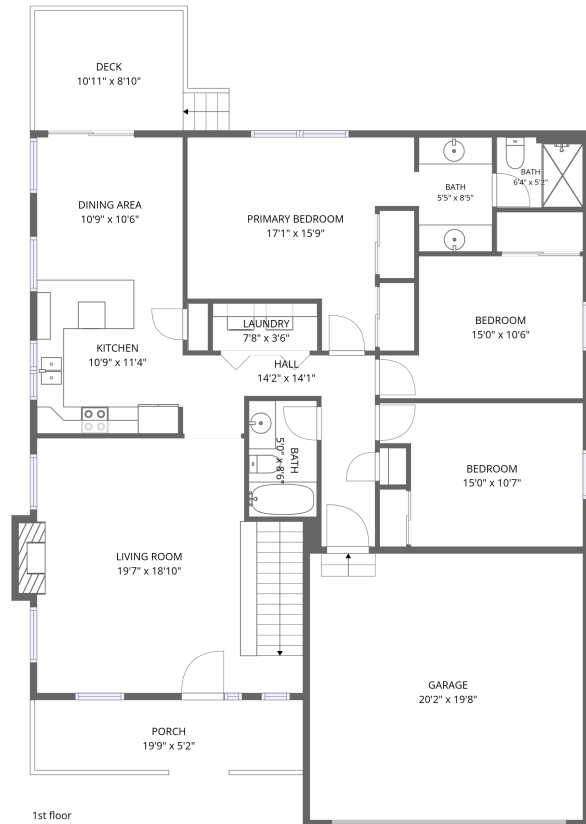


Home data report

312 53rd Ave, Greeley, CO, US



Basement



1st floor

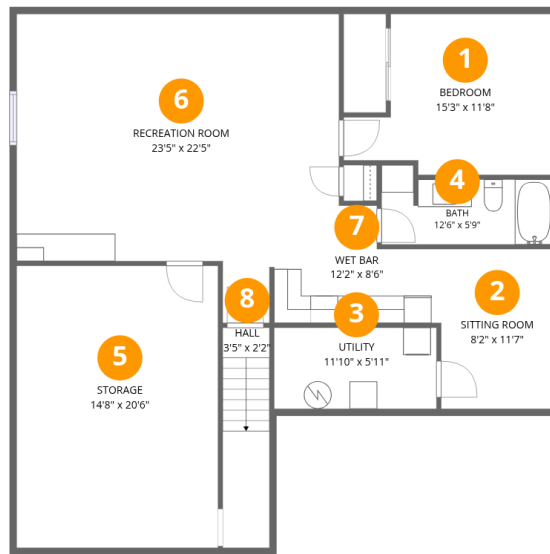
Total Area: 2364 sq. ft

Basement: 935 sq. ft, 1st Floor: 1429 sq. ft

Excluded: Storage 300 sq. ft, Utility 70 sq. ft, Garage 396 sq. ft, Porch 103 sq. ft, Deck 106 sq. ft, Fireplace 9 sq. ft, Walls: 183 sq. ft

Property summary





Room dimensions

Floor 1 Below grade

Total: 935 sqft

Excluded: 370 sqft

#		Dimensions	sqft	Counted as living area
1	Bedroom	15'3" x 11'8"	147 sq. ft	Yes
2	Sitting Room	8'2" x 11'7"	95 sq. ft	Yes
3	Utility	11'10" x 5'11"	70 sq. ft	No
4	Bath	12'6" x 5'9"	61 sq. ft	Yes
5	Storage	14'8" x 20'6"	300 sq. ft	No
6	Recreation Room	23'5" x 22'5"	428 sq. ft	Yes
7	Wet Bar	12'2" x 8'6"	78 sq. ft	Yes
8	Hall	3'5" x 2'2"	54 sq. ft	Yes



Room dimensions

Floor 2

Total: 1429sqft

Excluded: 614sqft

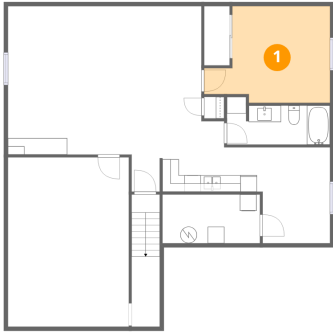
#		Dimensions	sqft	Counted as living area
9	Kitchen	10'9" x 11'4"	121 sq. ft	Yes
10	Bedroom	15'0" x 10'6"	136 sq. ft	Yes
11	Laundry	7'8" x 3'6"	27 sq. ft	Yes
12	Bedroom	15'0" x 10'7"	141 sq. ft	Yes
13	Dining Area	10'9" x 10'6"	113 sq. ft	Yes
14	Hall	14'2" x 14'1"	99 sq. ft	Yes
15	Garage	20'2" x 19'8"	396 sq. ft	No
16	Porch	19'9" x 5'2"	103 sq. ft	No
17	Bath	5'5" x 8'5"	46 sq. ft	Yes
18	Bath	5'0" x 8'6"	43 sq. ft	Yes
19	Primary Bedroom	17'1" x 15'9"	195 sq. ft	Yes

Home data report

312 53rd Ave, Greeley, CO, US

#		Dimensions	sqft	Counted as living area
20	Living Room	19'7" x 18'10"	351 sq. ft	Yes
21	Bath	6'4" x 5'2"	33 sq. ft	Yes
22	Deck	10'11" x 8'10"	106 sq. ft	No

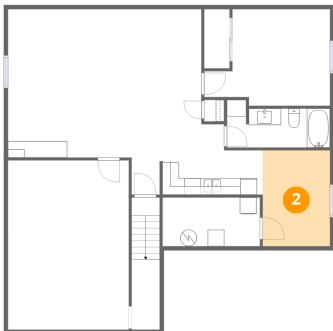
1 Floor 1 - Bedroom



Dimensions: 15'3" x 11'8"
Area: 147 sq. ft
Counted as living area: Yes

Heated: Yes
Finished: Yes
Enclosed: Yes
Contiguous: Yes
Permitted: Yes
Wet space: No
Addition: No
Conversion: No

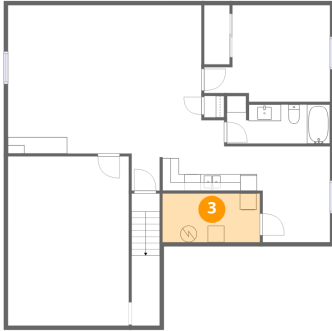
2 Floor 1 - Sitting Room



Dimensions: 8'2" x 11'7"
Area: 95 sq. ft
Counted as living area: Yes

Heated: Yes
Finished: Yes
Enclosed: Yes
Contiguous: Yes
Permitted: Yes
Wet space: No
Addition: No
Conversion: No

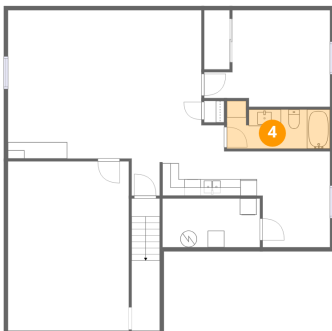
3 Floor 1 - Utility



Dimensions: 11'10" x 5'11"
Area: 70 sq. ft
Counted as living area: No

Heated: Yes
Finished: No
Enclosed: Yes
Contiguous: Yes
Permitted: Yes
Wet space: No
Addition: No
Conversion: No

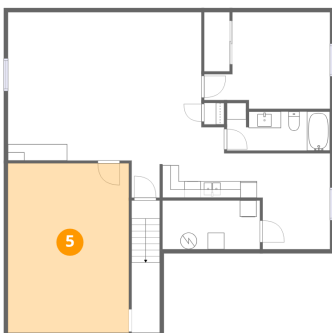
4 Floor 1 - Bath



Dimensions: 12'6" x 5'9"
Area: 61 sq. ft
Counted as living area: Yes

Heated: Yes
Finished: Yes
Enclosed: Yes
Contiguous: Yes
Permitted: Yes
Wet space: Yes
Addition: No
Conversion: No

5 Floor 1 - Storage



Dimensions: 14'8" x 20'6"
Area: 300 sq. ft
Counted as living area: No

Heated: No
Finished: No
Enclosed: No
Contiguous: Yes
Permitted: Yes
Wet space: No
Addition: No
Conversion: No

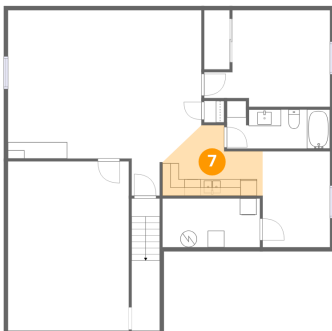
6 Floor 1 - Recreation Room



Dimensions: 23'5" x 22'5"
Area: 428 sq. ft
Counted as living area: Yes

Heated: Yes
Finished: Yes
Enclosed: Yes
Contiguous: Yes
Permitted: Yes
Wet space: No
Addition: No
Conversion: No

7 Floor 1 - Wet Bar



Dimensions: 12'2" x 8'6"
Area: 78 sq. ft
Counted as living area: Yes

Heated: Yes
Finished: Yes
Enclosed: Yes
Contiguous: Yes
Permitted: Yes
Wet space: No
Addition: No
Conversion: No

8 Floor 1 - Hall



Dimensions: 3'5" x 2'2"
Area: 54 sq. ft
Counted as living area: Yes

Heated: Yes
Finished: Yes
Enclosed: Yes
Contiguous: Yes
Permitted: Yes
Wet space: No
Addition: No
Conversion: No

9 Floor 2 - Kitchen



Dimensions: 10'9" x 11'4"
Area: 121 sq. ft
Counted as living area: Yes

Heated: Yes
Finished: Yes
Enclosed: Yes
Contiguous: Yes
Permitted: Yes
Wet space: No
Addition: No
Conversion: No

10 Floor 2 - Bedroom



Dimensions: 15'0" x 10'6"
Area: 136 sq. ft
Counted as living area: Yes

Heated: Yes
Finished: Yes
Enclosed: Yes
Contiguous: Yes
Permitted: Yes
Wet space: No
Addition: No
Conversion: No

11 Floor 2 - Laundry



Dimensions: 7'8" x 3'6"
Area: 27 sq. ft
Counted as living area: Yes

Heated: Yes
Finished: Yes
Enclosed: Yes
Contiguous: Yes
Permitted: Yes
Wet space: No
Addition: No
Conversion: No

12 Floor 2 - Bedroom



Dimensions: 15'0" x 10'7"
Area: 141 sq. ft
Counted as living area: Yes

Heated: Yes
Finished: Yes
Enclosed: Yes
Contiguous: Yes
Permitted: Yes
Wet space: No
Addition: No
Conversion: No

13 Floor 2 - Dining Area



Dimensions: 10'9" x 10'6"
Area: 113 sq. ft
Counted as living area: Yes

Heated: Yes
Finished: Yes
Enclosed: Yes
Contiguous: Yes
Permitted: Yes
Wet space: No
Addition: No
Conversion: No

14 Floor 2 - Hall



Dimensions: 14'2" x 14'1"
Area: 99 sq. ft
Counted as living area: Yes

Heated: Yes
Finished: Yes
Enclosed: Yes
Contiguous: Yes
Permitted: Yes
Wet space: No
Addition: No
Conversion: No

15 Floor 2 - Garage



Dimensions: 20'2" x 19'8"
Area: 396 sq. ft
Counted as living area: No

Heated: No
Finished: No
Enclosed: Yes
Contiguous: Yes
Permitted: Yes
Wet space: No
Addition: No
Conversion: No

16 Floor 2 - Porch



Dimensions: 19'9" x 5'2"
Area: 103 sq. ft
Counted as living area: No

Heated: No
Finished: No
Enclosed: No
Contiguous: Yes
Permitted: Yes
Wet space: No
Addition: No
Conversion: No

17 Floor 2 - Bath



Dimensions: 5'5" x 8'5"
Area: 46 sq. ft
Counted as living area: Yes

Heated: Yes
Finished: Yes
Enclosed: Yes
Contiguous: Yes
Permitted: Yes
Wet space: Yes
Addition: No
Conversion: No

18 Floor 2 - Bath



Dimensions: 5'0" x 8'6"
Area: 43 sq. ft
Counted as living area: Yes

Heated: Yes
Finished: Yes
Enclosed: Yes
Contiguous: Yes
Permitted: Yes
Wet space: Yes
Addition: No
Conversion: No

19 Floor 2 - Primary Bedroom



Dimensions: 17'1" x 15'9"
Area: 195 sq. ft
Counted as living area: Yes

Heated: Yes
Finished: Yes
Enclosed: Yes
Contiguous: Yes
Permitted: Yes
Wet space: No
Addition: No
Conversion: No

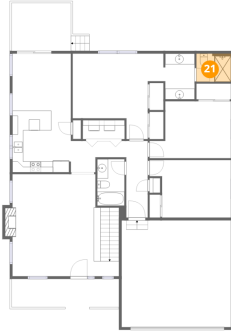
20 Floor 2 - Living Room



Dimensions: 19'7" x 18'10"
Area: 351 sq. ft
Counted as living area: Yes

Heated: Yes
Finished: Yes
Enclosed: Yes
Contiguous: Yes
Permitted: Yes
Wet space: No
Addition: No
Conversion: No

21 Floor 2 - Bath



Dimensions: 6'4" x 5'2"
Area: 33 sq. ft
Counted as living area: Yes

Heated: Yes
Finished: Yes
Enclosed: Yes
Contiguous: Yes
Permitted: Yes
Wet space: Yes
Addition: No
Conversion: No

22 Floor 2 - Deck



Dimensions: 10'11" x 8'10"
Area: 106 sq. ft
Counted as living area: No

Heated: No
Finished: No
Enclosed: No
Contiguous: Yes
Permitted: Yes
Wet space: No
Addition: No
Conversion: No