

Total Area: 1287 sq. ft

1st Floor: 1287 sq. ft

Excluded: Garage 509 sq. ft, Walls: 124 sq. ft

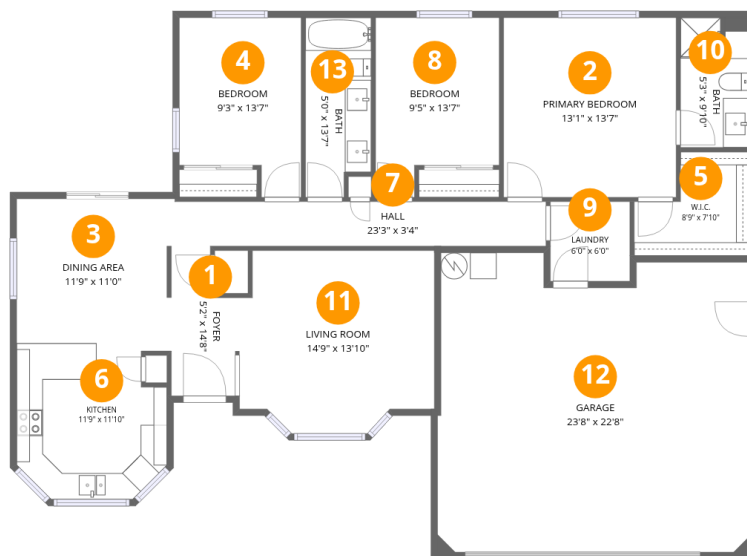
Property summary

 **1** Floors

 **3** Bedrooms

 **2** Bathrooms

 **1** Garages



Room dimensions

Floor 1

Total: 1287sqft Excluded: 509sqft

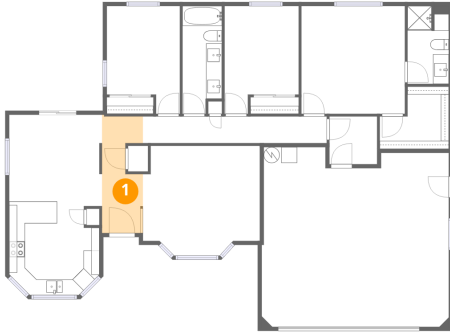
#		Dimensions	sqft	Counted as living area
1	Foyer	5'2" x 14'8"	68 sq. ft	Yes
2	Primary Bedroom	13'1" x 13'7"	178 sq. ft	Yes
3	Dining Area	11'9" x 11'0"	129 sq. ft	Yes
4	Bedroom	9'3" x 13'7"	111 sq. ft	Yes
5	W.I.C.	8'9" x 7'10"	55 sq. ft	Yes
6	Kitchen	11'9" x 11'10"	123 sq. ft	Yes
7	Hall	23'3" x 3'4"	78 sq. ft	Yes
8	Bedroom	9'5" x 13'7"	112 sq. ft	Yes
9	Laundry	6'0" x 6'0"	36 sq. ft	Yes
10	Bath	5'3" x 9'10"	50 sq. ft	Yes
11	Living Room	14'9" x 13'10"	188 sq. ft	Yes

Home data report

11367 W Hinsdale Ct,Boise,ID,US

#		Dimensions	sqft	Counted as living area
12	Garage	23'8" x 22'8"	509 sq. ft	No
13	Bath	5'0" x 13'7"	64 sq. ft	Yes

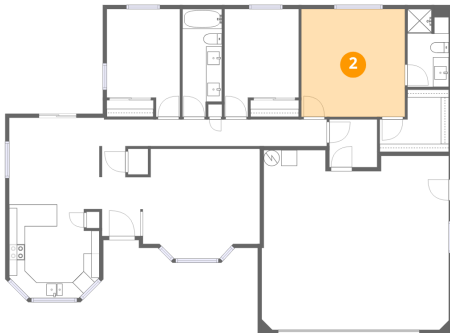
1 Floor 1 - Foyer



Dimensions: 5'2" x 14'8"
Area: 68 sq. ft
Counted as living area: Yes

Heated: Yes
Finished: Yes
Enclosed: Yes
Contiguous: Yes
Permitted: Yes
Wet space: No
Addition: No
Conversion: No

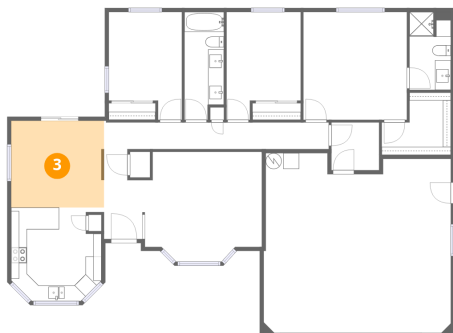
2 Floor 1 - Primary Bedroom



Dimensions: 13'1" x 13'7"
Area: 178 sq. ft
Counted as living area: Yes

Heated: Yes
Finished: Yes
Enclosed: Yes
Contiguous: Yes
Permitted: Yes
Wet space: No
Addition: No
Conversion: No

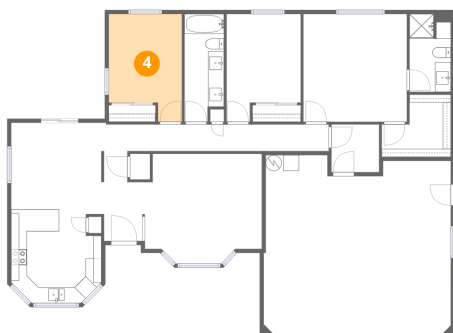
3 Floor 1 - Dining Area



Dimensions: 11'9" x 11'0"
Area: 129 sq. ft
Counted as living area: Yes

Heated: Yes
Finished: Yes
Enclosed: Yes
Contiguous: Yes
Permitted: Yes
Wet space: No
Addition: No
Conversion: No

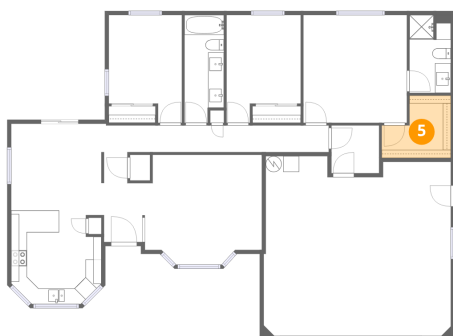
4 Floor 1 - Bedroom



Dimensions: 9'3" x 13'7"
Area: 111 sq. ft
Counted as living area: Yes

Heated: Yes
Finished: Yes
Enclosed: Yes
Contiguous: Yes
Permitted: Yes
Wet space: No
Addition: No
Conversion: No

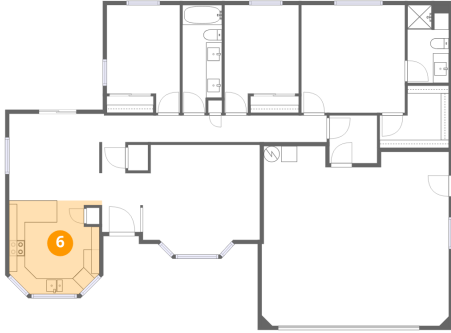
5 Floor 1 - W.I.C.



Dimensions: 8'9" x 7'10"
Area: 55 sq. ft
Counted as living area: Yes

Heated: Yes
Finished: Yes
Enclosed: Yes
Contiguous: Yes
Permitted: Yes
Wet space: No
Addition: No
Conversion: No

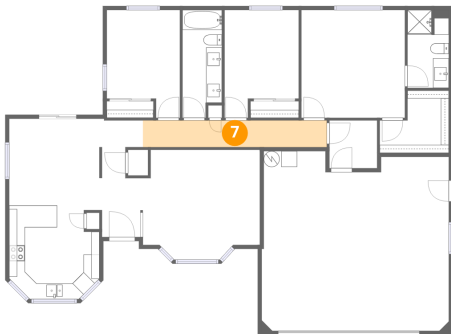
6 Floor 1 - Kitchen



Dimensions: 11'9" x 11'10"
Area: 123 sq. ft
Counted as living area: Yes

Heated: Yes
Finished: Yes
Enclosed: Yes
Contiguous: Yes
Permitted: Yes
Wet space: No
Addition: No
Conversion: No

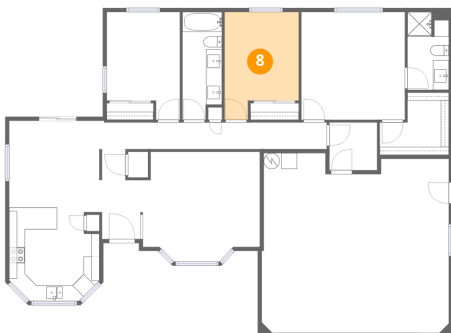
7 Floor 1 - Hall



Dimensions: 23'3" x 3'4"
Area: 78 sq. ft
Counted as living area: Yes

Heated: Yes
Finished: Yes
Enclosed: Yes
Contiguous: Yes
Permitted: Yes
Wet space: No
Addition: No
Conversion: No

8 Floor 1 - Bedroom



Dimensions: 9'5" x 13'7"
Area: 112 sq. ft
Counted as living area: Yes

Heated: Yes
Finished: Yes
Enclosed: Yes
Contiguous: Yes
Permitted: Yes
Wet space: No
Addition: No
Conversion: No

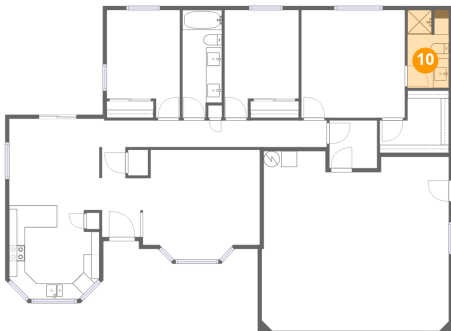
9 Floor 1 - Laundry



Dimensions: 6'0" x 6'0"
Area: 36 sq. ft
Counted as living area: Yes

Heated: Yes
Finished: Yes
Enclosed: Yes
Contiguous: Yes
Permitted: Yes
Wet space: No
Addition: No
Conversion: No

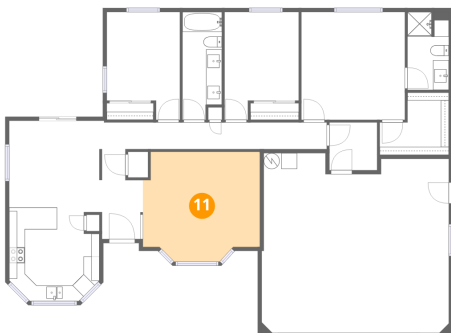
10 Floor 1 - Bath



Dimensions: 5'3" x 9'10"
Area: 50 sq. ft
Counted as living area: Yes

Heated: Yes
Finished: Yes
Enclosed: Yes
Contiguous: Yes
Permitted: Yes
Wet space: Yes
Addition: No
Conversion: No

11 Floor 1 - Living Room



Dimensions: 14'9" x 13'10"
Area: 188 sq. ft
Counted as living area: Yes

Heated: Yes
Finished: Yes
Enclosed: Yes
Contiguous: Yes
Permitted: Yes
Wet space: No
Addition: No
Conversion: No

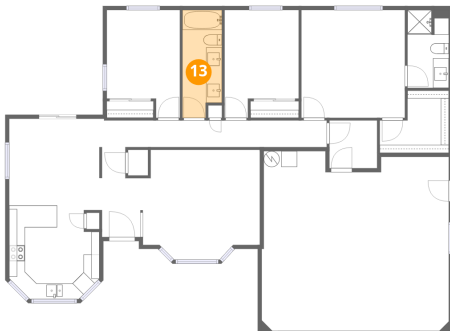
12 Floor 1 - Garage



Dimensions: 23'8" x 22'8"
Area: 509 sq. ft
Counted as living area: No

Heated: No
Finished: No
Enclosed: Yes
Contiguous: Yes
Permitted: Yes
Wet space: No
Addition: No
Conversion: No

13 Floor 1 - Bath



Dimensions: 5'0" x 13'7"
Area: 64 sq. ft
Counted as living area: Yes

Heated: Yes
Finished: Yes
Enclosed: Yes
Contiguous: Yes
Permitted: Yes
Wet space: Yes
Addition: No
Conversion: No