

Home data report

**9 Lake Street, Silver Lake, Plympton, Plymouth County,
Massachusetts, United States, 02367**

 **1**
Half baths

 **2**
Garages

Home data report

9 Lake Street, Silver Lake, Plympton, Plymouth County, Massachusetts, United States, 02367



Room dimensions

Floor 1 Below grade

Total:0sqft

Excluded: 1094sqft

#		Dimensions	sqft	Counted as living area
1	Laundry	13'3" x 21'10"	289 sq. ft	No
2	Basement	25'11" x 38'11"	801 sq. ft	No

Home data report

9 Lake Street, Silver Lake, Plympton, Plymouth County, Massachusetts, United States, 02367



Room dimensions

Floor 2

Total:1058sqft

Excluded: 1512sqft

#		Dimensions	sqft	Counted as living area
3	Bath	3'2" x 5'9"	37 sq. ft	No
4	Deck	16'9" x 11'10"	196 sq. ft	No
5	Kitchen	13'3" x 15'0"	198 sq. ft	Yes
6	Garage	29'2" x 43'2"	1009 sq. ft	No
7	Living Room	22'1" x 13'0"	245 sq. ft	Yes
8	Screened Porch	5'2" x 12'9"	66 sq. ft	No
9	Garage	17'6" x 11'8"	204 sq. ft	No
10	Hall	3'4" x 3'0"	10 sq. ft	Yes
11	Pantry	7'1" x 4'5"	32 sq. ft	Yes
12	Hall	3'1" x 3'0"	28 sq. ft	Yes
13	Family Room	13'3" x 15'6"	205 sq. ft	Yes

Home data report

**9 Lake Street, Silver Lake, Plympton, Plymouth County,
Massachusetts, United States, 02367**

#		Dimensions	sqft	Counted as living area
14	Office	10'0" x 8'8"	86 sq. ft	Yes
15	Dining Room	15'7" x 13'8"	212 sq. ft	Yes

Home data report

9 Lake Street, Silver Lake, Plympton, Plymouth County, Massachusetts, United States, 02367



Room dimensions

Floor 3

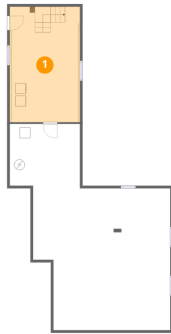
Total:625sqft

Excluded: 860sqft

#		Dimensions	sqft	Counted as living area
16	Hall	3'3" x 7'3"	24 sq. ft	Yes
17	Bedroom	11'9" x 8'6"	98 sq. ft	Yes
18	Bedroom	11'9" x 12'11"	132 sq. ft	Yes
19	Hall	11'10" x 4'7"	75 sq. ft	Yes
20	Bath	10'0" x 6'11"	57 sq. ft	Yes
21	Primary Bedroom	13'10" x 13'6"	160 sq. ft	Yes
22	Storage	2'10" x 5'11"	17 sq. ft	No
23	Attic	29'2" x 28'11"	843 sq. ft	No
24	W.I.C.	6'10" x 3'4"	23 sq. ft	Yes

9 Lake Street, Silver Lake, Plympton, Plymouth County,
Massachusetts, United States, 02367

1 Floor 1 - Laundry



Dimensions: 13'3" x 21'10"
Area: 289 sq. ft
Counted as living area: No

Heated: Yes
Finished: No
Enclosed: Yes
Contiguous: Yes
Permitted: Yes
Wet space: No
Addition: No
Conversion: No

2 Floor 1 - Basement



Dimensions: 25'11" x 38'11"
Area: 801 sq. ft
Counted as living area: No

Heated: Yes
Finished: No
Enclosed: Yes
Contiguous: Yes
Permitted: Yes
Wet space: No
Addition: No
Conversion: No

9 Lake Street, Silver Lake, Plympton, Plymouth County,
Massachusetts, United States, 02367

3 Floor 2 - Bath



Dimensions: 3'2" x 5'9"
Area: 37 sq. ft
Counted as living area: No

Heated: Yes
Finished: Yes
Enclosed: Yes
Contiguous: Yes
Permitted: Yes
Wet space: Yes
Addition: No
Conversion: No

4 Floor 2 - Deck



Dimensions: 16'9" x 11'10"
Area: 196 sq. ft
Counted as living area: No

Heated: No
Finished: No
Enclosed: No
Contiguous: Yes
Permitted: Yes
Wet space: No
Addition: No
Conversion: No

5 Floor 2 - Kitchen



Dimensions: 13'3" x 15'0"
Area: 198 sq. ft
Counted as living area: Yes

Heated: Yes
Finished: Yes
Enclosed: Yes
Contiguous: Yes
Permitted: Yes
Wet space: No
Addition: No
Conversion: No

9 Lake Street, Silver Lake, Plympton, Plymouth County, Massachusetts, United States, 02367

6 Floor 2 - Garage



Dimensions: 29'2" x 43'2"
Area: 1009 sq. ft
Counted as living area: No

Heated: No
Finished: No
Enclosed: Yes
Contiguous: Yes
Permitted: Yes
Wet space: No
Addition: No
Conversion: No

7 Floor 2 - Living Room



Dimensions: 22'1" x 13'0"
Area: 245 sq. ft
Counted as living area: Yes

Heated: Yes
Finished: Yes
Enclosed: Yes
Contiguous: Yes
Permitted: Yes
Wet space: No
Addition: No
Conversion: No

8 Floor 2 - Screened Porch



Dimensions: 5'2" x 12'9"
Area: 66 sq. ft
Counted as living area: No

Heated: No
Finished: No
Enclosed: No
Contiguous: Yes
Permitted: Yes
Wet space: No
Addition: No
Conversion: No

9 Lake Street, Silver Lake, Plympton, Plymouth County, Massachusetts, United States, 02367

9 Floor 2 - Garage



Dimensions: 17'6" x 11'8"
Area: 204 sq. ft
Counted as living area: No

Heated: No
Finished: No
Enclosed: Yes
Contiguous: Yes
Permitted: Yes
Wet space: No
Addition: No
Conversion: No

10 Floor 2 - Hall



Dimensions: 3'4" x 3'0"
Area: 10 sq. ft
Counted as living area: Yes

Heated: Yes
Finished: Yes
Enclosed: Yes
Contiguous: Yes
Permitted: Yes
Wet space: No
Addition: No
Conversion: No

11 Floor 2 - Pantry



Dimensions: 7'1" x 4'5"
Area: 32 sq. ft
Counted as living area: Yes

Heated: Yes
Finished: Yes
Enclosed: Yes
Contiguous: Yes
Permitted: Yes
Wet space: No
Addition: No
Conversion: No

9 Lake Street, Silver Lake, Plympton, Plymouth County,
Massachusetts, United States, 02367

12 Floor 2 - Hall



Dimensions: 3'1" x 3'0"
Area: 28 sq. ft
Counted as living area: Yes

Heated: Yes
Finished: Yes
Enclosed: Yes
Contiguous: Yes
Permitted: Yes
Wet space: No
Addition: No
Conversion: No

13 Floor 2 - Family Room



Dimensions: 13'3" x 15'6"
Area: 205 sq. ft
Counted as living area: Yes

Heated: Yes
Finished: Yes
Enclosed: Yes
Contiguous: Yes
Permitted: Yes
Wet space: No
Addition: No
Conversion: No

14 Floor 2 - Office



Dimensions: 10'0" x 8'8"
Area: 86 sq. ft
Counted as living area: Yes

Heated: Yes
Finished: Yes
Enclosed: Yes
Contiguous: Yes
Permitted: Yes
Wet space: No
Addition: No
Conversion: No

9 Lake Street, Silver Lake, Plympton, Plymouth County,
Massachusetts, United States, 02367

15 Floor 2 - Dining Room



Dimensions: 15'7" x 13'8"
Area: 212 sq. ft
Counted as living area: Yes

Heated: Yes
Finished: Yes
Enclosed: Yes
Contiguous: Yes
Permitted: Yes
Wet space: No
Addition: No
Conversion: No

16 Floor 3 - Hall



Dimensions: 3'3" x 7'3"
Area: 24 sq. ft
Counted as living area: Yes

Heated: Yes
Finished: Yes
Enclosed: Yes
Contiguous: Yes
Permitted: Yes
Wet space: No
Addition: No
Conversion: No



17 Floor 3 - Bedroom



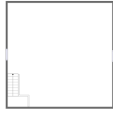
Dimensions: 11'9" x 8'6"
Area: 98 sq. ft
Counted as living area: Yes

Heated: Yes
Finished: Yes
Enclosed: Yes
Contiguous: Yes
Permitted: Yes
Wet space: No
Addition: No
Conversion: No



9 Lake Street, Silver Lake, Plympton, Plymouth County,
Massachusetts, United States, 02367

18 Floor 3 - Bedroom

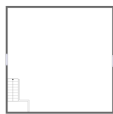


Dimensions: 11'9" x 12'11"
Area: 132 sq. ft
Counted as living area: Yes

Heated: Yes
Finished: Yes
Enclosed: Yes
Contiguous: Yes
Permitted: Yes
Wet space: No
Addition: No
Conversion: No



19 Floor 3 - Hall



Dimensions: 11'10" x 4'7"
Area: 75 sq. ft
Counted as living area: Yes

Heated: Yes
Finished: Yes
Enclosed: Yes
Contiguous: Yes
Permitted: Yes
Wet space: No
Addition: No
Conversion: No



20 Floor 3 - Bath



Dimensions: 10'0" x 6'11"
Area: 57 sq. ft
Counted as living area: Yes

Heated: Yes
Finished: Yes
Enclosed: Yes
Contiguous: Yes
Permitted: Yes
Wet space: Yes
Addition: No
Conversion: No



9 Lake Street, Silver Lake, Plympton, Plymouth County,
Massachusetts, United States, 02367

21 Floor 3 - Primary Bedroom



Dimensions: 13'10" x 13'6"
Area: 160 sq. ft
Counted as living area: Yes

Heated: Yes
Finished: Yes
Enclosed: Yes
Contiguous: Yes
Permitted: Yes
Wet space: No
Addition: No
Conversion: No



22 Floor 3 - Storage



Dimensions: 2'10" x 5'11"
Area: 17 sq. ft
Counted as living area: No

Heated: No
Finished: No
Enclosed: No
Contiguous: Yes
Permitted: Yes
Wet space: No
Addition: No
Conversion: No



23 Floor 3 - Attic



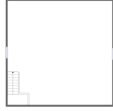
Dimensions: 29'2" x 28'11"
Area: 843 sq. ft
Counted as living area: No

Heated: No
Finished: No
Enclosed: Yes
Contiguous: Yes
Permitted: Yes
Wet space: No
Addition: No
Conversion: No



**9 Lake Street, Silver Lake, Plympton, Plymouth County,
Massachusetts, United States, 02367**

24 Floor 3 - W.I.C.



Dimensions: 6'10" x 3'4"
Area: 23 sq. ft
Counted as living area: No

Heated: Yes
Finished: Yes
Enclosed: Yes
Contiguous: Yes
Permitted: Yes
Wet space: No
Addition: No
Conversion: No

