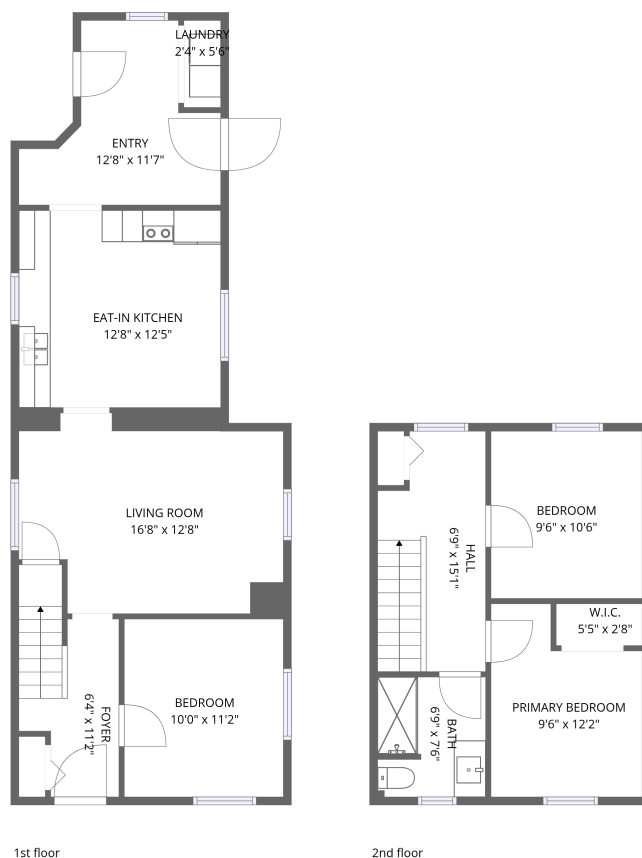


Home data report

152 Townline Road East, Carleton Place, Lanark County, Ontario, Canada, K7C 2C3



Total Area: 1061 sq. ft

1st Floor: 679 sq. ft, 2nd Floor: 382 sq. ft

Excluded: Walls: 107 sq. ft

Property summary

 **2** Floors

 **3** Bedrooms

 **1** Bathrooms

Home data report

152 Townline Road East, Carleton Place, Lanark County, Ontario, Canada, K7C 2C3



Room dimensions

Floor 1

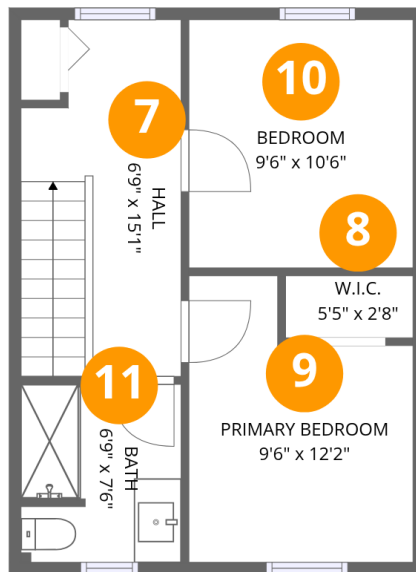
Total:679sqft

Excluded: 0sqft

#		Dimensions	sqft	Counted as living area
1	Entry	12'8" x 11'7"	147 sq. ft	Yes
2	Eat-in Kitchen	12'8" x 12'5"	157 sq. ft	Yes
3	Laundry	2'4" x 5'6"	13 sq. ft	Yes
4	Foyer	6'4" x 11'2"	70 sq. ft	Yes
5	Bedroom	10'0" x 11'2"	111 sq. ft	Yes
6	Living Room	16'8" x 12'8"	210 sq. ft	Yes

Home data report

152 Townline Road East, Carleton Place, Lanark County, Ontario, Canada, K7C 2C3



Room dimensions

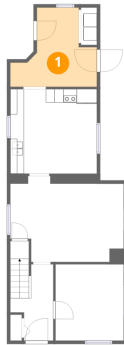
Floor 2

Total:382sqft

Excluded: 0sqft

#		Dimensions	sqft	Counted as living area
7	Hall	6'9" x 15'1"	103 sq. ft	Yes
8	W.I.C.	5'5" x 2'8"	14 sq. ft	Yes
9	Primary Bedroom	9'6" x 12'2"	115 sq. ft	Yes
10	Bedroom	9'6" x 10'6"	100 sq. ft	Yes
11	Bath	6'9" x 7'6"	51 sq. ft	Yes

1 Floor 1 - Entry



Dimensions: 12'8" x 11'7"
Area: 147 sq. ft
Counted as living area: Yes

Heated: Yes
Finished: Yes
Enclosed: Yes
Contiguous: Yes
Permitted: Yes
Wet space: No
Addition: No
Conversion: No

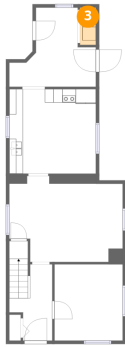
2 Floor 1 - Eat-in Kitchen



Dimensions: 12'8" x 12'5"
Area: 157 sq. ft
Counted as living area: Yes

Heated: Yes
Finished: Yes
Enclosed: Yes
Contiguous: Yes
Permitted: Yes
Wet space: No
Addition: No
Conversion: No

3 Floor 1 - Laundry



Dimensions: 2'4" x 5'6"
Area: 13 sq. ft
Counted as living area: Yes

Heated: Yes
Finished: Yes
Enclosed: Yes
Contiguous: Yes
Permitted: Yes
Wet space: No
Addition: No
Conversion: No

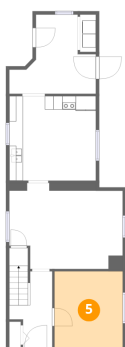
4 Floor 1 - Foyer



Dimensions: 6'4" x 11'2"
Area: 70 sq. ft
Counted as living area: Yes

Heated: Yes
Finished: Yes
Enclosed: Yes
Contiguous: Yes
Permitted: Yes
Wet space: No
Addition: No
Conversion: No

5 Floor 1 - Bedroom



Dimensions: 10'0" x 11'2"
Area: 111 sq. ft
Counted as living area: Yes

Heated: Yes
Finished: Yes
Enclosed: Yes
Contiguous: Yes
Permitted: Yes
Wet space: No
Addition: No
Conversion: No

152 Townline Road East, Carleton Place, Lanark County, Ontario, Canada, K7C 2C3

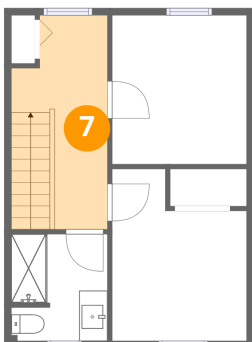
6 Floor 1 - Living Room



Dimensions: 16'8" x 12'8"
Area: 210 sq. ft
Counted as living area: Yes

Heated: Yes
Finished: Yes
Enclosed: Yes
Contiguous: Yes
Permitted: Yes
Wet space: No
Addition: No
Conversion: No

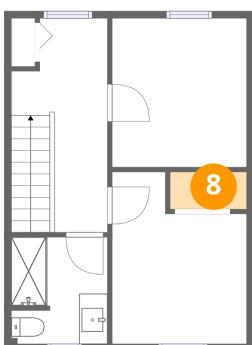
7 Floor 2 - Hall



Dimensions: 6'9" x 15'1"
Area: 103 sq. ft
Counted as living area: Yes

Heated: Yes
Finished: Yes
Enclosed: Yes
Contiguous: Yes
Permitted: Yes
Wet space: No
Addition: No
Conversion: No

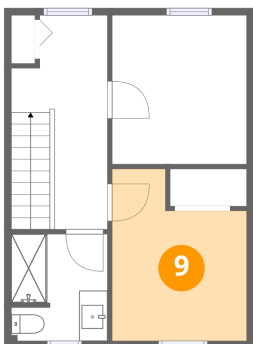
8 Floor 2 - W.I.C.



Dimensions: 5'5" x 2'8"
Area: 14 sq. ft
Counted as living area: Yes

Heated: Yes
Finished: Yes
Enclosed: Yes
Contiguous: Yes
Permitted: Yes
Wet space: No
Addition: No
Conversion: No

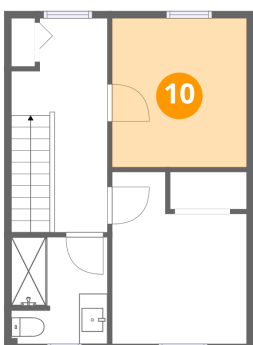
9 Floor 2 - Primary Bedroom



Dimensions: 9'6" x 12'2"
Area: 115 sq. ft
Counted as living area: Yes

Heated: Yes
Finished: Yes
Enclosed: Yes
Contiguous: Yes
Permitted: Yes
Wet space: No
Addition: No
Conversion: No

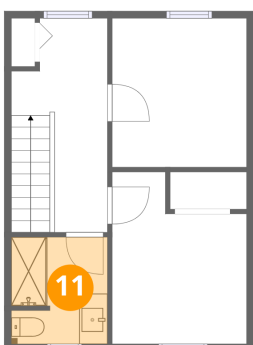
10 Floor 2 - Bedroom



Dimensions: 9'6" x 10'6"
Area: 100 sq. ft
Counted as living area: Yes

Heated: Yes
Finished: Yes
Enclosed: Yes
Contiguous: Yes
Permitted: Yes
Wet space: No
Addition: No
Conversion: No

11 Floor 2 - Bath



Dimensions: 6'9" x 7'6"
Area: 51 sq. ft
Counted as living area: Yes

Heated: Yes
Finished: Yes
Enclosed: Yes
Contiguous: Yes
Permitted: Yes
Wet space: Yes
Addition: No
Conversion: No