

Home data report

1777 Southpoint Cove, Jacksonville, FL, US



Total Area: 2063 sq. ft

1st Floor: 2063 sq. ft

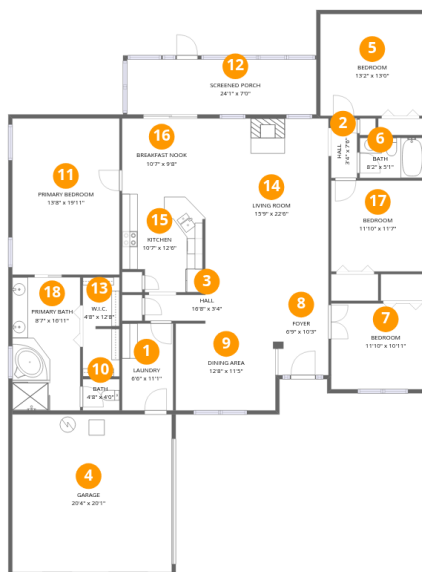
Excluded: Garage 409 sq. ft, Screened porch 170 sq. ft, Walls: 152 sq. ft

Property summary



Home data report

1777 Southpoint Cove, Jacksonville, FL, US



Room dimensions

Floor 1

Total: 2063 sqft Excluded: 579 sqft

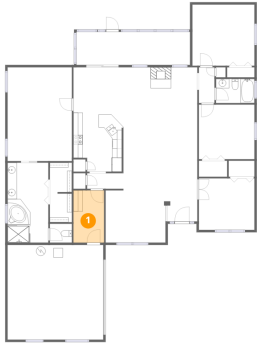
#		Dimensions	sqft	Counted as living area
1	Laundry	6'6" x 11'1"	72 sq. ft	Yes
2	Hall	3'4" x 7'6"	25 sq. ft	Yes
3	Hall	16'8" x 3'4"	55 sq. ft	Yes
4	Garage	20'4" x 20'1"	409 sq. ft	No
5	Bedroom	13'2" x 13'0"	171 sq. ft	Yes
6	Bath	8'2" x 5'1"	42 sq. ft	Yes
7	Bedroom	11'10" x 10'11"	129 sq. ft	Yes
8	Foyer	6'9" x 10'3"	69 sq. ft	Yes
9	Dining Area	12'8" x 11'5"	144 sq. ft	Yes
10	Bath	4'8" x 4'0"	19 sq. ft	Yes
11	Primary Bedroom	13'8" x 19'11"	272 sq. ft	Yes

Home data report

1777 Southpoint Cove, Jacksonville, FL, US

#		Dimensions	sqft	Counted as living area
12	Screened Porch	24'1" x 7'0"	169 sq. ft	No
13	W.I.C.	4'8" x 12'8"	59 sq. ft	Yes
14	Living Room	15'9" x 22'6"	353 sq. ft	Yes
15	Kitchen	10'7" x 12'6"	133 sq. ft	Yes
16	Breakfast Nook	10'7" x 9'8"	102 sq. ft	Yes
17	Bedroom	11'10" x 11'7"	137 sq. ft	Yes
18	Primary Bath	8'7" x 16'11"	146 sq. ft	Yes

1 Floor 1 - Laundry



Dimensions: 6'6" x 11'1"
Area: 72 sq. ft
Counted as living area: Yes

Heated: Yes
Finished: Yes
Enclosed: Yes
Contiguous: Yes
Permitted: Yes
Wet space: No
Addition: No
Conversion: No

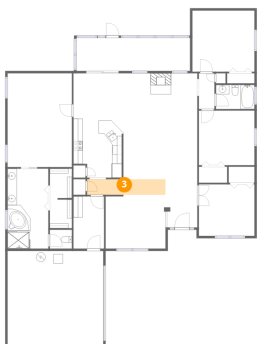
2 Floor 1 - Hall



Dimensions: 3'4" x 7'6"
Area: 25 sq. ft
Counted as living area: Yes

Heated: Yes
Finished: Yes
Enclosed: Yes
Contiguous: Yes
Permitted: Yes
Wet space: No
Addition: No
Conversion: No

3 Floor 1 - Hall



Dimensions: 16'8" x 3'4"
Area: 55 sq. ft
Counted as living area: Yes

Heated: Yes
Finished: Yes
Enclosed: Yes
Contiguous: Yes
Permitted: Yes
Wet space: No
Addition: No
Conversion: No

4 Floor 1 - Garage



Dimensions: 20'4" x 20'1"
Area: 409 sq. ft
Counted as living area: No

Heated: No
Finished: No
Enclosed: Yes
Contiguous: Yes
Permitted: Yes
Wet space: No
Addition: No
Conversion: No

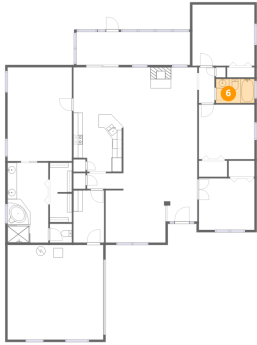
5 Floor 1 - Bedroom



Dimensions: 13'2" x 13'0"
Area: 171 sq. ft
Counted as living area: Yes

Heated: Yes
Finished: Yes
Enclosed: Yes
Contiguous: Yes
Permitted: Yes
Wet space: No
Addition: No
Conversion: No

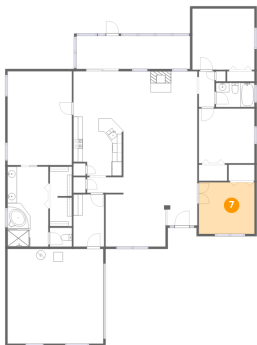
6 Floor 1 - Bath



Dimensions: 8'2" x 5'1"
Area: 42 sq. ft
Counted as living area: Yes

Heated: Yes
Finished: Yes
Enclosed: Yes
Contiguous: Yes
Permitted: Yes
Wet space: Yes
Addition: No
Conversion: No

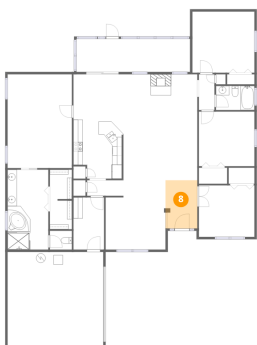
7 Floor 1 - Bedroom



Dimensions: 11'10" x 10'11"
Area: 129 sq. ft
Counted as living area: Yes

Heated: Yes
Finished: Yes
Enclosed: Yes
Contiguous: Yes
Permitted: Yes
Wet space: No
Addition: No
Conversion: No

8 Floor 1 - Foyer



Dimensions: 6'9" x 10'3"
Area: 69 sq. ft
Counted as living area: Yes

Heated: Yes
Finished: Yes
Enclosed: Yes
Contiguous: Yes
Permitted: Yes
Wet space: No
Addition: No
Conversion: No

9 Floor 1 - Dining Area



Dimensions: 12'8" x 11'5"
Area: 144 sq. ft
Counted as living area: Yes

Heated: Yes
Finished: Yes
Enclosed: Yes
Contiguous: Yes
Permitted: Yes
Wet space: No
Addition: No
Conversion: No

10 Floor 1 - Bath



Dimensions: 4'8" x 4'0"
Area: 19 sq. ft
Counted as living area: Yes

Heated: Yes
Finished: Yes
Enclosed: Yes
Contiguous: Yes
Permitted: Yes
Wet space: Yes
Addition: No
Conversion: No

11 Floor 1 - Primary Bedroom



Dimensions: 13'8" x 19'11"
Area: 272 sq. ft
Counted as living area: Yes

Heated: Yes
Finished: Yes
Enclosed: Yes
Contiguous: Yes
Permitted: Yes
Wet space: No
Addition: No
Conversion: No

12 Floor 1 - Screened Porch



Dimensions: 24'1" x 7'0"
Area: 169 sq. ft
Counted as living area: No

Heated: No
Finished: No
Enclosed: No
Contiguous: Yes
Permitted: Yes
Wet space: No
Addition: No
Conversion: No

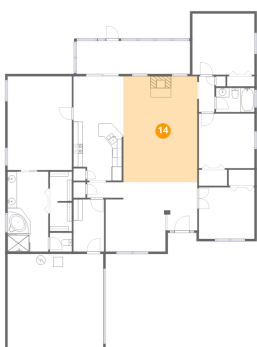
13 Floor 1 - W.I.C.



Dimensions: 4'8" x 12'8"
Area: 59 sq. ft
Counted as living area: Yes

Heated: Yes
Finished: Yes
Enclosed: Yes
Contiguous: Yes
Permitted: Yes
Wet space: No
Addition: No
Conversion: No

14 Floor 1 - Living Room



Dimensions: 15'9" x 22'6"
Area: 353 sq. ft
Counted as living area: Yes

Heated: Yes
Finished: Yes
Enclosed: Yes
Contiguous: Yes
Permitted: Yes
Wet space: No
Addition: No
Conversion: No

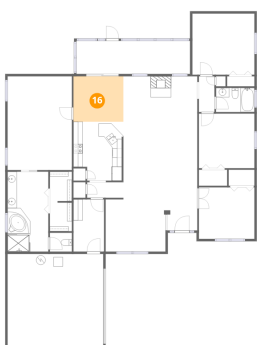
15 Floor 1 - Kitchen



Dimensions: 10'7" x 12'6"
Area: 133 sq. ft
Counted as living area: Yes

Heated: Yes
Finished: Yes
Enclosed: Yes
Contiguous: Yes
Permitted: Yes
Wet space: No
Addition: No
Conversion: No

16 Floor 1 - Breakfast Nook



Dimensions: 10'7" x 9'8"
Area: 102 sq. ft
Counted as living area: Yes

Heated: Yes
Finished: Yes
Enclosed: Yes
Contiguous: Yes
Permitted: Yes
Wet space: No
Addition: No
Conversion: No

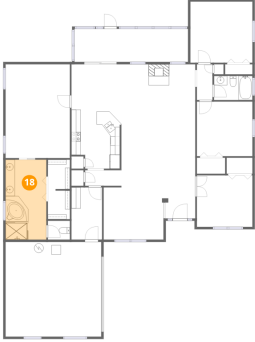
17 Floor 1 - Bedroom



Dimensions: 11'10" x 11'7"
Area: 137 sq. ft
Counted as living area: Yes

Heated: Yes
Finished: Yes
Enclosed: Yes
Contiguous: Yes
Permitted: Yes
Wet space: No
Addition: No
Conversion: No

18 Floor 1 - Primary Bath



Dimensions: 8'7" x 16'11"
Area: 146 sq. ft
Counted as living area: Yes

Heated: Yes
Finished: Yes
Enclosed: Yes
Contiguous: Yes
Permitted: Yes
Wet space: Yes
Addition: No
Conversion: No