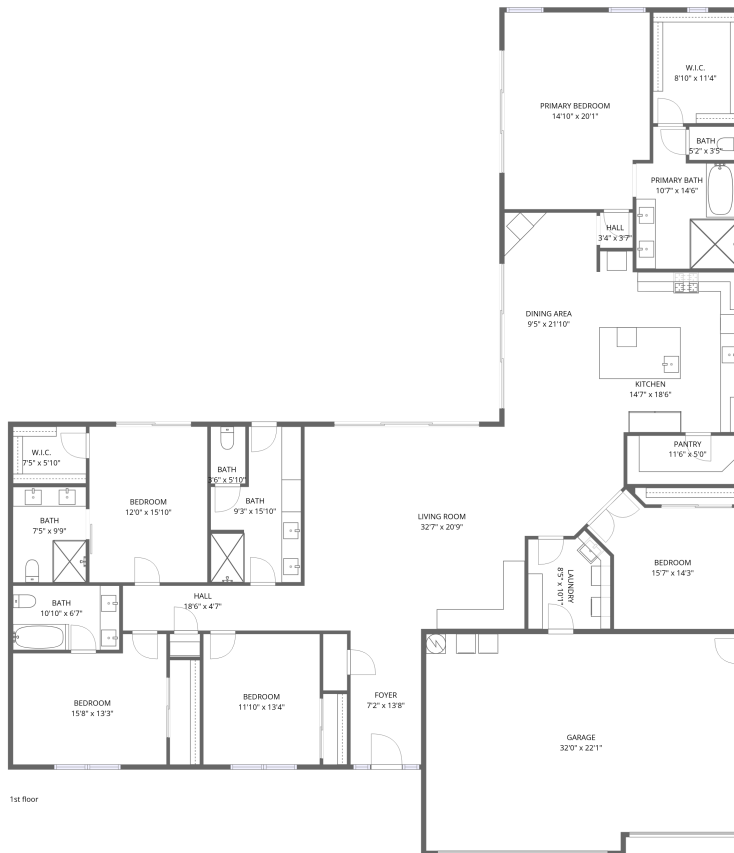


Home data report

3401 N 34th Pl, Phoenix, AZ, US



**Total Area: 3800 sq. ft**

1st Floor: 3800 sq. ft

Excluded: Walls: 183 sq. ft

## Property summary



**1**  
Floors



**5**  
Bedrooms



**4**  
Bathrooms



**1**  
Garages

# Home data report

## 3401 N 34th Pl, Phoenix, AZ, US



### Room dimensions

Floor 1

Total: 3800sqft

Excluded: 0sqft

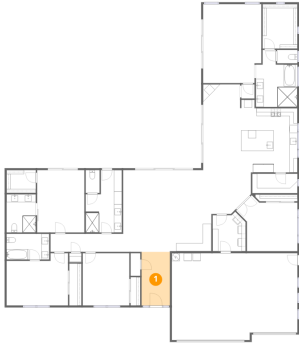
#		Dimensions	sqft	Counted as living area
1	Foyer	7'2" x 13'8"	98 sq. ft	Yes
2	Primary Bath	10'7" x 14'6"	126 sq. ft	Yes
3	W.I.C.	7'5" x 5'10"	43 sq. ft	Yes
4	Bath	9'3" x 15'10"	121 sq. ft	Yes
5	Primary Bedroom	14'10" x 20'1"	289 sq. ft	Yes
6	Kitchen	14'7" x 18'6"	244 sq. ft	Yes
7	W.I.C.	8'10" x 11'4"	100 sq. ft	Yes
8	Laundry	8'5" x 10'1"	76 sq. ft	Yes
9	Bath	10'10" x 6'7"	71 sq. ft	Yes
10	Living Room	32'7" x 20'9"	565 sq. ft	Yes
11	Bath	3'6" x 5'10"	21 sq. ft	Yes

## Home data report

# 3401 N 34th Pl,Phoenix,AZ,US

#		Dimensions	sqft	Counted as living area
12	Garage	32'0" x 22'1"	684 sq. ft	Yes
13	Dining Area	9'5" x 21'10"	205 sq. ft	Yes
14	Bedroom	15'7" x 14'3"	170 sq. ft	Yes
15	Hall	18'6" x 4'7"	85 sq. ft	Yes
16	Pantry	11'6" x 5'0"	57 sq. ft	Yes
17	Bedroom	12'0" x 15'10"	191 sq. ft	Yes
18	Bedroom	11'10" x 13'4"	158 sq. ft	Yes
19	Bedroom	15'8" x 13'3"	186 sq. ft	Yes
20	Bath	7'5" x 9'9"	72 sq. ft	Yes
21	Hall	3'4" x 3'7"	12 sq. ft	Yes
22	Bath	5'2" x 3'5"	18 sq. ft	Yes

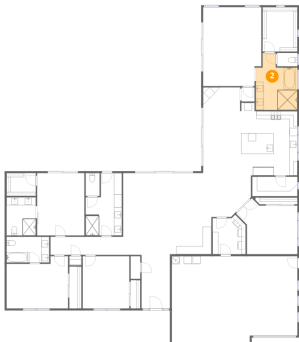
## 1 Floor 1 - Foyer



Dimensions: 7'2" x 13'8"  
Area: 98 sq. ft  
Counted as living area: Yes

Heated: Yes  
Finished: Yes  
Enclosed: Yes  
Contiguous: Yes  
Permitted: Yes  
Wet space: No  
Addition: No  
Conversion: No

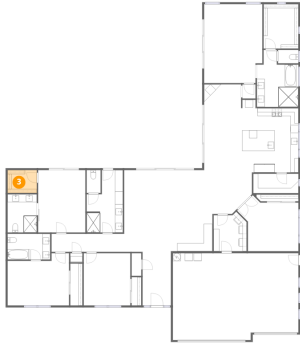
## 2 Floor 1 - Primary Bath



Dimensions: 10'7" x 14'6"  
Area: 126 sq. ft  
Counted as living area: Yes

Heated: Yes  
Finished: Yes  
Enclosed: Yes  
Contiguous: Yes  
Permitted: Yes  
Wet space: Yes  
Addition: No  
Conversion: No

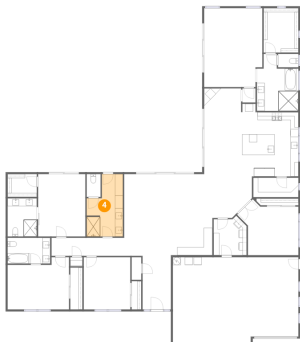
### 3 Floor 1 - W.I.C.



Dimensions: 7'5" x 5'10"  
Area: 43 sq. ft  
Counted as living area: Yes

Heated: Yes  
Finished: Yes  
Enclosed: Yes  
Contiguous: Yes  
Permitted: Yes  
Wet space: No  
Addition: No  
Conversion: No

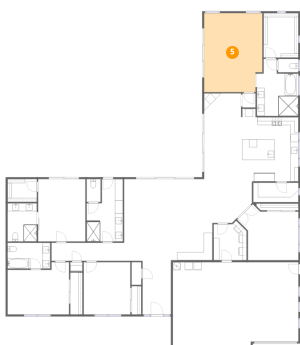
### 4 Floor 1 - Bath



Dimensions: 9'3" x 15'10"  
Area: 121 sq. ft  
Counted as living area: Yes

Heated: Yes  
Finished: Yes  
Enclosed: Yes  
Contiguous: Yes  
Permitted: Yes  
Wet space: Yes  
Addition: No  
Conversion: No

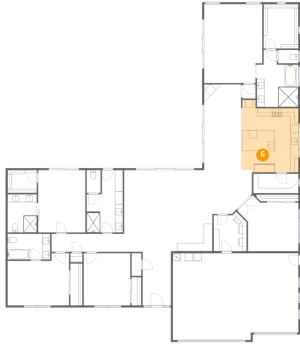
### 5 Floor 1 - Primary Bedroom



Dimensions: 14'10" x 20'1"  
Area: 289 sq. ft  
Counted as living area: Yes

Heated: Yes  
Finished: Yes  
Enclosed: Yes  
Contiguous: Yes  
Permitted: Yes  
Wet space: No  
Addition: No  
Conversion: No

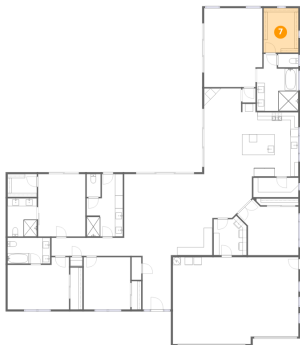
**6** Floor 1 - Kitchen



Dimensions: 14'7" x 18'6"  
Area: 244 sq. ft  
Counted as living area: Yes

Heated: Yes  
Finished: Yes  
Enclosed: Yes  
Contiguous: Yes  
Permitted: Yes  
Wet space: No  
Addition: No  
Conversion: No

**7** Floor 1 - W.I.C.



Dimensions: 8'10" x 11'4"  
Area: 100 sq. ft  
Counted as living area: Yes

Heated: Yes  
Finished: Yes  
Enclosed: Yes  
Contiguous: Yes  
Permitted: Yes  
Wet space: No  
Addition: No  
Conversion: No

**8** Floor 1 - Laundry



Dimensions: 8'5" x 10'1"  
Area: 76 sq. ft  
Counted as living area: Yes

Heated: Yes  
Finished: Yes  
Enclosed: Yes  
Contiguous: Yes  
Permitted: Yes  
Wet space: No  
Addition: No  
Conversion: No

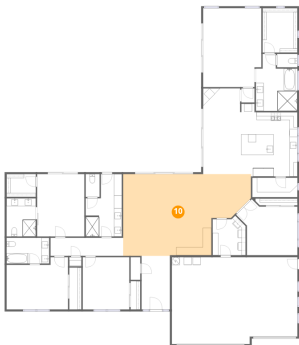
### 9 Floor 1 - Bath



Dimensions: 10'10" x 6'7"  
Area: 71 sq. ft  
Counted as living area: Yes

Heated: Yes  
Finished: Yes  
Enclosed: Yes  
Contiguous: Yes  
Permitted: Yes  
Wet space: Yes  
Addition: No  
Conversion: No

### 10 Floor 1 - Living Room



Dimensions: 32'7" x 20'9"  
Area: 565 sq. ft  
Counted as living area: Yes

Heated: Yes  
Finished: Yes  
Enclosed: Yes  
Contiguous: Yes  
Permitted: Yes  
Wet space: No  
Addition: No  
Conversion: No

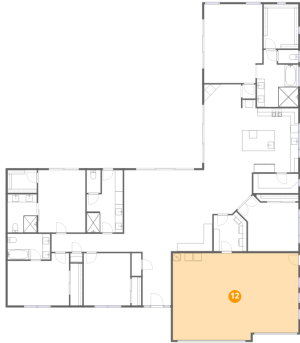
### 11 Floor 1 - Bath



Dimensions: 3'6" x 5'10"  
Area: 21 sq. ft  
Counted as living area: Yes

Heated: Yes  
Finished: Yes  
Enclosed: Yes  
Contiguous: Yes  
Permitted: Yes  
Wet space: Yes  
Addition: No  
Conversion: No

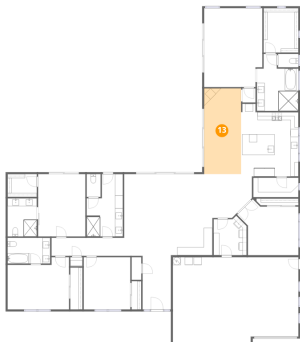
## 12 Floor 1 - Garage



Dimensions: 32'0" x 22'1"  
Area: 684 sq. ft  
Counted as living area: No

Heated: No  
Finished: Yes  
Enclosed: Yes  
Contiguous: Yes  
Permitted: Yes  
Wet space: No  
Addition: No  
Conversion: No

## 13 Floor 1 - Dining Area



Dimensions: 9'5" x 21'10"  
Area: 205 sq. ft  
Counted as living area: Yes

Heated: Yes  
Finished: Yes  
Enclosed: Yes  
Contiguous: Yes  
Permitted: Yes  
Wet space: No  
Addition: No  
Conversion: No

## 14 Floor 1 - Bedroom

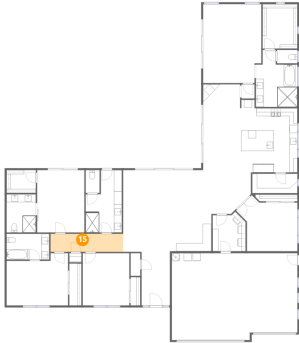


Dimensions: 15'7" x 14'3"  
Area: 170 sq. ft  
Counted as living area: Yes

Heated: Yes  
Finished: Yes  
Enclosed: Yes  
Contiguous: Yes  
Permitted: Yes  
Wet space: No  
Addition: No  
Conversion: No

**15** Floor 1 - Hall

---



Dimensions: 18'6" x 4'7"  
Area: 85 sq. ft  
Counted as living area: Yes

Heated: Yes  
Finished: Yes  
Enclosed: Yes  
Contiguous: Yes  
Permitted: Yes  
Wet space: No  
Addition: No  
Conversion: No

**16** Floor 1 - Pantry

---

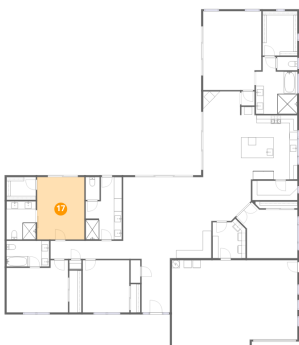


Dimensions: 11'6" x 5'0"  
Area: 57 sq. ft  
Counted as living area: Yes

Heated: Yes  
Finished: Yes  
Enclosed: Yes  
Contiguous: Yes  
Permitted: Yes  
Wet space: No  
Addition: No  
Conversion: No

**17** Floor 1 - Bedroom

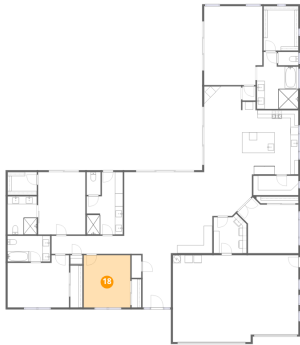
---



Dimensions: 12'0" x 15'10"  
Area: 191 sq. ft  
Counted as living area: Yes

Heated: Yes  
Finished: Yes  
Enclosed: Yes  
Contiguous: Yes  
Permitted: Yes  
Wet space: No  
Addition: No  
Conversion: No

**18** Floor 1 - Bedroom



Dimensions: 11'10" x 13'4"  
Area: 158 sq. ft  
Counted as living area: Yes

Heated: Yes  
Finished: Yes  
Enclosed: Yes  
Contiguous: Yes  
Permitted: Yes  
Wet space: No  
Addition: No  
Conversion: No

**19** Floor 1 - Bedroom



Dimensions: 15'8" x 13'3"  
Area: 186 sq. ft  
Counted as living area: Yes

Heated: Yes  
Finished: Yes  
Enclosed: Yes  
Contiguous: Yes  
Permitted: Yes  
Wet space: No  
Addition: No  
Conversion: No

**20** Floor 1 - Bath



Dimensions: 7'5" x 9'9"  
Area: 72 sq. ft  
Counted as living area: Yes

Heated: Yes  
Finished: Yes  
Enclosed: Yes  
Contiguous: Yes  
Permitted: Yes  
Wet space: Yes  
Addition: No  
Conversion: No

**21** Floor 1 - Hall

---

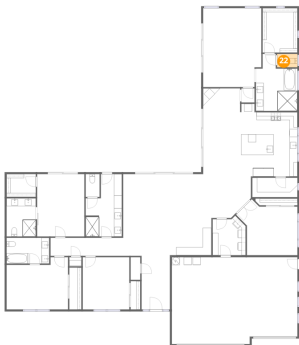


**Dimensions:** 3'4" x 3'7"  
**Area:** 12 sq. ft  
**Counted as living area:** Yes

**Heated:** Yes  
**Finished:** Yes  
**Enclosed:** Yes  
**Contiguous:** Yes  
**Permitted:** Yes  
**Wet space:** No  
**Addition:** No  
**Conversion:** No

**22** Floor 1 - Bath

---



**Dimensions:** 5'2" x 3'5"  
**Area:** 18 sq. ft  
**Counted as living area:** Yes

**Heated:** Yes  
**Finished:** Yes  
**Enclosed:** Yes  
**Contiguous:** Yes  
**Permitted:** Yes  
**Wet space:** Yes  
**Addition:** No  
**Conversion:** No