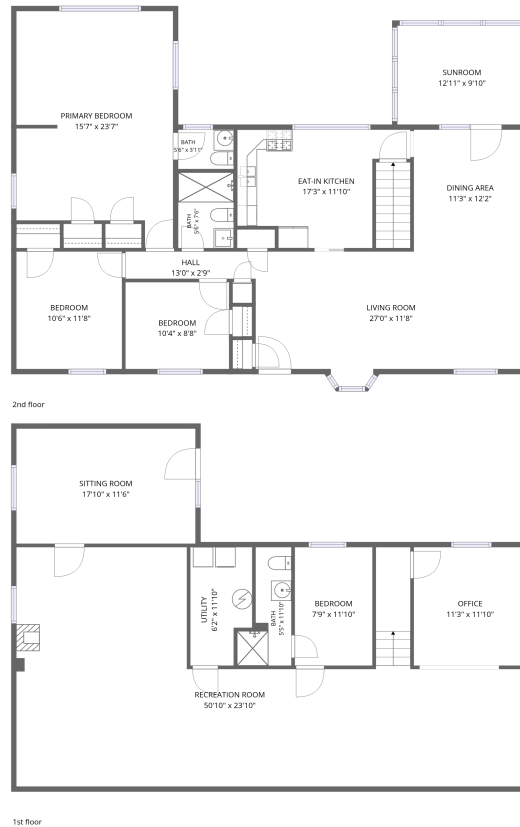


Home data report

1304 Gilmore Circle, Fairview Heights, Lynchburg, Lynchburg city, Virginia, United States, 24501

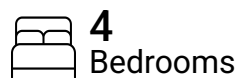


Total Area: 2851 sq. ft

1st Floor: 1328 sq. ft, 2nd Floor: 1523 sq. ft

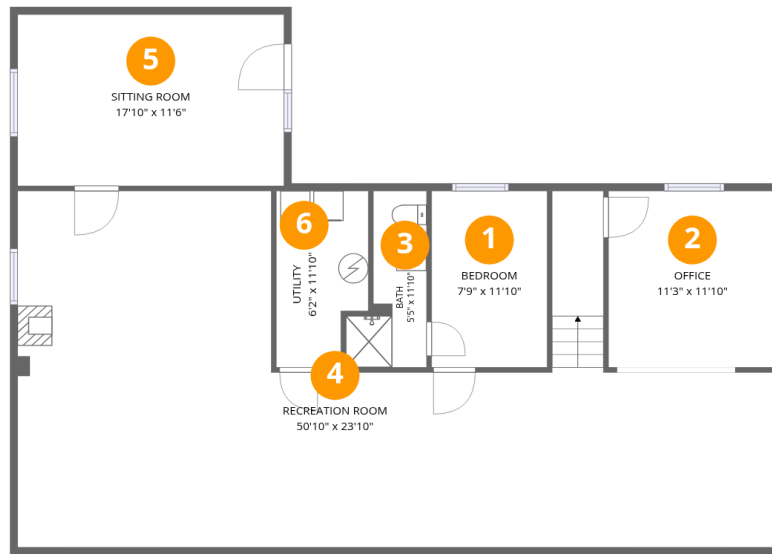
Excluded: Utility 66 sq. ft, Undefined 29 sq. ft, Embedded window 7 sq. ft, Walls: 191 sq. ft

Property summary



Home data report

1304 Gilmore Circle, Fairview Heights, Lynchburg, Lynchburg city, Virginia, United States, 24501



Room dimensions

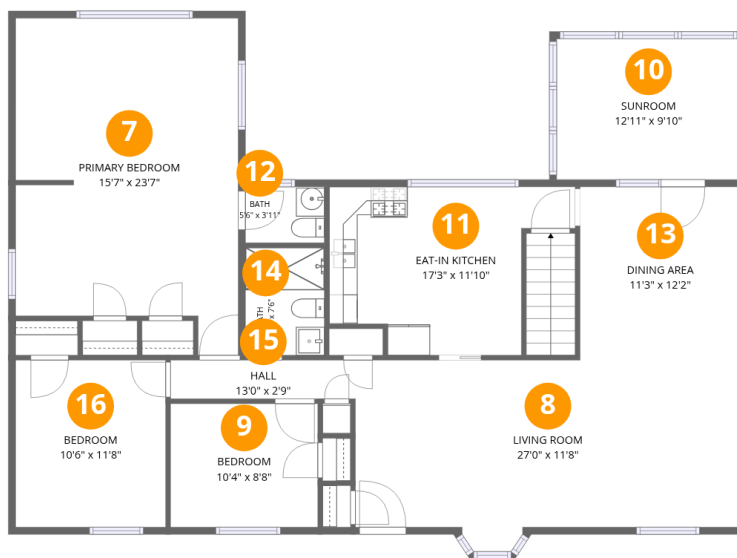
Floor 1

Total:1328sqft Excluded: 95sqft

#		Dimensions	sqft	Counted as living area
1	Bedroom	7'9" x 11'10"	91 sq. ft	Yes
2	Office	11'3" x 11'10"	133 sq. ft	Yes
3	Bath	5'5" x 11'10"	48 sq. ft	Yes
4	Recreation Room	50'10" x 23'10"	814 sq. ft	Yes
5	Sitting Room	17'10" x 11'6"	205 sq. ft	Yes
6	Utility	6'2" x 11'10"	66 sq. ft	No

Home data report

1304 Gilmore Circle, Fairview Heights, Lynchburg, Lynchburg city, Virginia, United States, 24501



Room dimensions

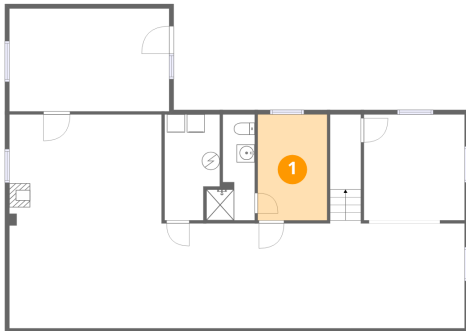
Floor 2

Total:1523sqft Excluded: 7sqft

#		Dimensions	sqft	Counted as living area
7	Primary Bedroom	15'7" x 23'7"	332 sq. ft	Yes
8	Living Room	27'0" x 11'8"	316 sq. ft	Yes
9	Bedroom	10'4" x 8'8"	89 sq. ft	Yes
10	Sunroom	12'11" x 9'10"	127 sq. ft	Yes
11	Eat-in Kitchen	17'3" x 11'10"	161 sq. ft	Yes
12	Bath	5'6" x 3'11"	22 sq. ft	Yes
13	Dining Area	11'3" x 12'2"	136 sq. ft	Yes
14	Bath	5'6" x 7'6"	42 sq. ft	Yes
15	Hall	13'0" x 2'9"	35 sq. ft	Yes
16	Bedroom	10'6" x 11'8"	123 sq. ft	Yes

1304 Gilmore Circle, Fairview Heights, Lynchburg, Lynchburg city, Virginia, United States, 24501

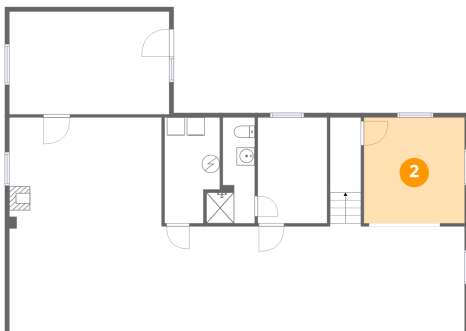
1 Floor 1 - Bedroom



Dimensions: 7'9" x 11'10"
Area: 91 sq. ft
Counted as living area: Yes

Heated: Yes
Finished: Yes
Enclosed: Yes
Contiguous: Yes
Permitted: Yes
Wet space: No
Addition: No
Conversion: No

2 Floor 1 - Office

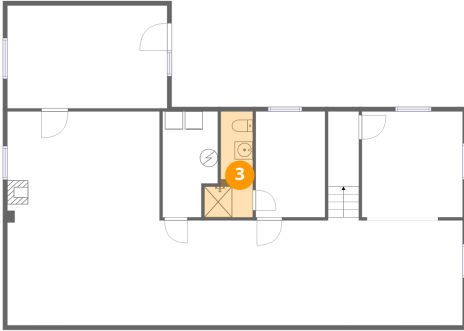


Dimensions: 11'3" x 11'10"
Area: 133 sq. ft
Counted as living area: Yes

Heated: Yes
Finished: Yes
Enclosed: Yes
Contiguous: Yes
Permitted: Yes
Wet space: No
Addition: No
Conversion: No

1304 Gilmore Circle, Fairview Heights, Lynchburg, Lynchburg city, Virginia, United States, 24501

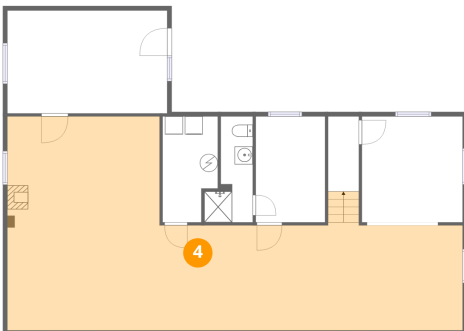
3 Floor 1 - Bath



Dimensions: 5'5" x 11'10"
Area: 48 sq. ft
Counted as living area: Yes

Heated: Yes
Finished: Yes
Enclosed: Yes
Contiguous: Yes
Permitted: Yes
Wet space: Yes
Addition: No
Conversion: No

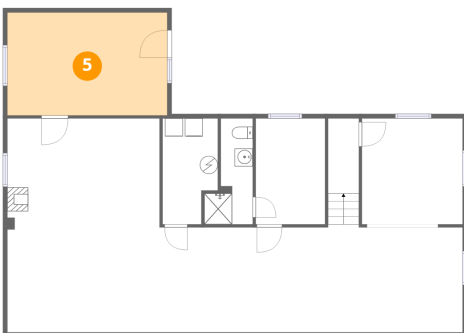
4 Floor 1 - Recreation Room



Dimensions: 50'10" x 23'10"
Area: 814 sq. ft
Counted as living area: Yes

Heated: Yes
Finished: Yes
Enclosed: Yes
Contiguous: Yes
Permitted: Yes
Wet space: No
Addition: No
Conversion: No

5 Floor 1 - Sitting Room

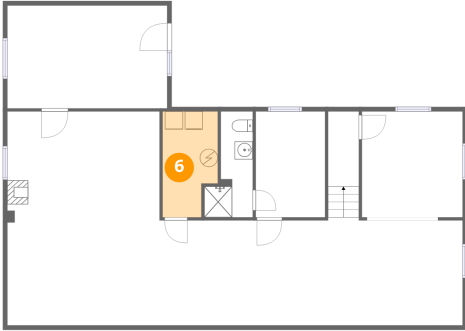


Dimensions: 17'10" x 11'6"
Area: 205 sq. ft
Counted as living area: Yes

Heated: Yes
Finished: Yes
Enclosed: Yes
Contiguous: Yes
Permitted: Yes
Wet space: No
Addition: No
Conversion: No

1304 Gilmore Circle, Fairview Heights, Lynchburg, Lynchburg city, Virginia, United States, 24501

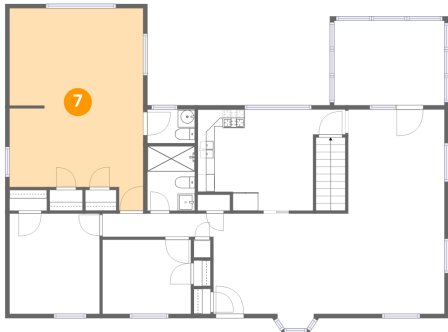
6 Floor 1 - Utility



Dimensions: 6'2" x 11'10"
Area: 66 sq. ft
Counted as living area: No

Heated: Yes
Finished: No
Enclosed: Yes
Contiguous: Yes
Permitted: Yes
Wet space: No
Addition: No
Conversion: No

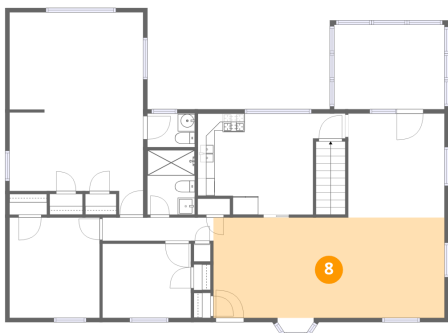
7 Floor 2 - Primary Bedroom



Dimensions: 15'7" x 23'7"
Area: 332 sq. ft
Counted as living area: Yes

Heated: Yes
Finished: Yes
Enclosed: Yes
Contiguous: Yes
Permitted: Yes
Wet space: No
Addition: No
Conversion: No

8 Floor 2 - Living Room



Dimensions: 27'0" x 11'8"
Area: 316 sq. ft
Counted as living area: Yes

Heated: Yes
Finished: Yes
Enclosed: Yes
Contiguous: Yes
Permitted: Yes
Wet space: No
Addition: No
Conversion: No

1304 Gilmore Circle, Fairview Heights, Lynchburg, Lynchburg city, Virginia, United States, 24501

9 Floor 2 - Bedroom



Dimensions: 10'4" x 8'8"
Area: 89 sq. ft
Counted as living area: Yes

Heated: Yes
Finished: Yes
Enclosed: Yes
Contiguous: Yes
Permitted: Yes
Wet space: No
Addition: No
Conversion: No

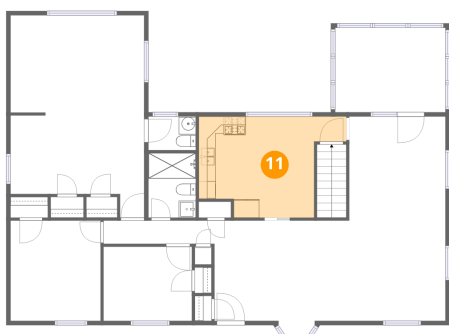
10 Floor 2 - Sunroom



Dimensions: 12'11" x 9'10"
Area: 127 sq. ft
Counted as living area: Yes

Heated: Yes
Finished: Yes
Enclosed: Yes
Contiguous: Yes
Permitted: Yes
Wet space: No
Addition: No
Conversion: No

11 Floor 2 - Eat-in Kitchen



Dimensions: 17'3" x 11'10"
Area: 161 sq. ft
Counted as living area: Yes

Heated: Yes
Finished: Yes
Enclosed: Yes
Contiguous: Yes
Permitted: Yes
Wet space: No
Addition: No
Conversion: No

1304 Gilmore Circle, Fairview Heights, Lynchburg, Lynchburg city, Virginia, United States, 24501

12 Floor 2 - Bath



Dimensions: 5'6" x 3'11"
Area: 22 sq. ft
Counted as living area: Yes

Heated: Yes
Finished: Yes
Enclosed: Yes
Contiguous: Yes
Permitted: Yes
Wet space: Yes
Addition: No
Conversion: No

13 Floor 2 - Dining Area



Dimensions: 11'3" x 12'2"
Area: 136 sq. ft
Counted as living area: Yes

Heated: Yes
Finished: Yes
Enclosed: Yes
Contiguous: Yes
Permitted: Yes
Wet space: No
Addition: No
Conversion: No

14 Floor 2 - Bath

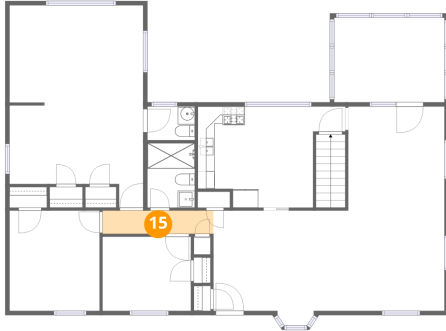


Dimensions: 5'6" x 7'6"
Area: 42 sq. ft
Counted as living area: Yes

Heated: Yes
Finished: Yes
Enclosed: Yes
Contiguous: Yes
Permitted: Yes
Wet space: Yes
Addition: No
Conversion: No

1304 Gilmore Circle, Fairview Heights, Lynchburg, Lynchburg city, Virginia, United States, 24501

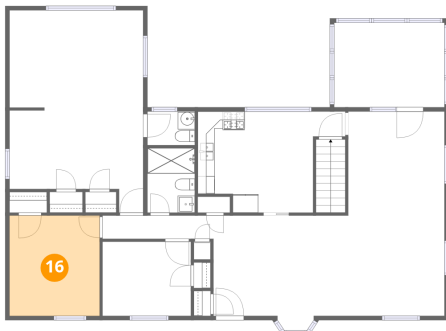
15 Floor 2 - Hall



Dimensions: 13'0" x 2'9"
Area: 35 sq. ft
Counted as living area: Yes

Heated: Yes
Finished: Yes
Enclosed: Yes
Contiguous: Yes
Permitted: Yes
Wet space: No
Addition: No
Conversion: No

16 Floor 2 - Bedroom



Dimensions: 10'6" x 11'8"
Area: 123 sq. ft
Counted as living area: Yes

Heated: Yes
Finished: Yes
Enclosed: Yes
Contiguous: Yes
Permitted: Yes
Wet space: No
Addition: No
Conversion: No