

Home data report

3135 Lupine Canyon Rd, Avila Beach, CA, US




**Total Area: 3663 sq. ft**

1st Floor: 3663 sq. ft

Excluded: Garage 604 sq. ft, Walls: 203 sq. ft

## Property summary

 **1** Floors

 **2** Bedrooms

 **2** Bathrooms

Home data report

**3135 Lupine Canyon Rd, Avila Beach, CA, US**

 **1**  
Half baths

 **1**  
Garages

# Home data report

## 3135 Lupine Canyon Rd, Avila Beach, CA, US



### Room dimensions

Floor 1

Total: 3663 sqft

Excluded: 604 sqft

#		Dimensions	sqft	Counted as living area
1	W.I.C.	7'5" x 7'3"	53 sq. ft	Yes
2	Bedroom	14'10" x 14'8"	186 sq. ft	Yes
3	Primary Bedroom	17'1" x 20'7"	320 sq. ft	Yes
4	Bath	3'4" x 7'1"	24 sq. ft	Yes
5	Hall	16'6" x 28'6"	227 sq. ft	Yes
6	Office	9'0" x 9'2"	82 sq. ft	Yes
7	W.I.C.	16'8" x 11'2"	137 sq. ft	Yes
8	Sitting Room	16'8" x 14'2"	235 sq. ft	Yes
9	Family Room	17'3" x 18'4"	316 sq. ft	Yes
10	Garage	20'3" x 33'5"	604 sq. ft	No
11	Foyer	9'3" x 9'1"	73 sq. ft	Yes

Home data report

3135 Lupine Canyon Rd,Avila Beach,CA,US

#		Dimensions	sqft	Counted as living area
12	Pantry	6'1" x 5'10"	36 sq. ft	Yes
13	Hall	16'4" x 16'8"	170 sq. ft	Yes
14	Laundry	19'5" x 11'4"	143 sq. ft	Yes
15	Kitchen	15'10" x 23'4"	368 sq. ft	Yes
16	Bath	8'10" x 18'0"	126 sq. ft	Yes
17	Bath	5'10" x 6'5"	37 sq. ft	Yes
18	Primary Bath	15'10" x 23'0"	263 sq. ft	Yes
19	Office	14'1" x 11'9"	164 sq. ft	Yes
20	Bath	3'3" x 6'9"	22 sq. ft	Yes
21	W.I.C.	6'8" x 9'1"	49 sq. ft	Yes
22	Dining Room	19'9" x 14'3"	269 sq. ft	Yes
23	Living Room	10'11" x 14'8"	146 sq. ft	Yes

**1 Floor 1 - W.I.C.**

---



**Dimensions:** 7'5" x 7'3"  
**Area:** 53 sq. ft  
**Counted as living area:** Yes

**Heated:** Yes  
**Finished:** Yes  
**Enclosed:** Yes  
**Contiguous:** Yes  
**Permitted:** Yes  
**Wet space:** No  
**Addition:** No  
**Conversion:** No

**2 Floor 1 - Bedroom**

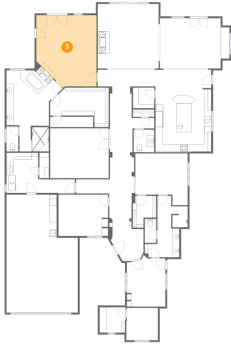
---



**Dimensions:** 14'10" x 14'8"  
**Area:** 186 sq. ft  
**Counted as living area:** Yes

**Heated:** Yes  
**Finished:** Yes  
**Enclosed:** Yes  
**Contiguous:** Yes  
**Permitted:** Yes  
**Wet space:** No  
**Addition:** No  
**Conversion:** No

### 3 Floor 1 - Primary Bedroom



Dimensions: 17'1" x 20'7"  
Area: 320 sq. ft  
Counted as living area: Yes

Heated: Yes  
Finished: Yes  
Enclosed: Yes  
Contiguous: Yes  
Permitted: Yes  
Wet space: No  
Addition: No  
Conversion: No

### 4 Floor 1 - Bath



Dimensions: 3'4" x 7'1"  
Area: 24 sq. ft  
Counted as living area: Yes

Heated: Yes  
Finished: Yes  
Enclosed: Yes  
Contiguous: Yes  
Permitted: Yes  
Wet space: Yes  
Addition: No  
Conversion: No

### 5 Floor 1 - Hall



Dimensions: 16'6" x 28'6"  
Area: 227 sq. ft  
Counted as living area: Yes

Heated: Yes  
Finished: Yes  
Enclosed: Yes  
Contiguous: Yes  
Permitted: Yes  
Wet space: No  
Addition: No  
Conversion: No

**6** Floor 1 - Office

---

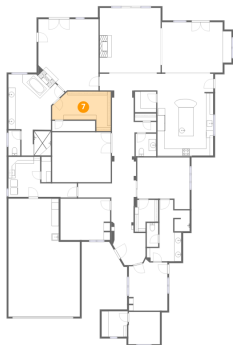


Dimensions: 9'0" x 9'2"  
Area: 82 sq. ft  
Counted as living area: Yes

Heated: Yes  
Finished: Yes  
Enclosed: Yes  
Contiguous: Yes  
Permitted: Yes  
Wet space: No  
Addition: No  
Conversion: No

**7** Floor 1 - W.I.C.

---



Dimensions: 16'8" x 11'2"  
Area: 137 sq. ft  
Counted as living area: Yes

Heated: Yes  
Finished: Yes  
Enclosed: Yes  
Contiguous: Yes  
Permitted: Yes  
Wet space: No  
Addition: No  
Conversion: No

**8** Floor 1 - Sitting Room

---



Dimensions: 16'8" x 14'2"  
Area: 235 sq. ft  
Counted as living area: Yes

Heated: Yes  
Finished: Yes  
Enclosed: Yes  
Contiguous: Yes  
Permitted: Yes  
Wet space: No  
Addition: No  
Conversion: No

### 9 Floor 1 - Family Room



Dimensions: 17'3" x 18'4"  
Area: 316 sq. ft  
Counted as living area: Yes

Heated: Yes  
Finished: Yes  
Enclosed: Yes  
Contiguous: Yes  
Permitted: Yes  
Wet space: No  
Addition: No  
Conversion: No

### 10 Floor 1 - Garage



Dimensions: 20'3" x 33'5"  
Area: 604 sq. ft  
Counted as living area: No

Heated: No  
Finished: No  
Enclosed: Yes  
Contiguous: Yes  
Permitted: Yes  
Wet space: No  
Addition: No  
Conversion: No

### 11 Floor 1 - Foyer



Dimensions: 9'3" x 9'1"  
Area: 73 sq. ft  
Counted as living area: Yes

Heated: Yes  
Finished: Yes  
Enclosed: Yes  
Contiguous: Yes  
Permitted: Yes  
Wet space: No  
Addition: No  
Conversion: No

## 12 Floor 1 - Pantry



Dimensions: 6'1" x 5'10"  
Area: 36 sq. ft  
Counted as living area: Yes

Heated: Yes  
Finished: Yes  
Enclosed: Yes  
Contiguous: Yes  
Permitted: Yes  
Wet space: No  
Addition: No  
Conversion: No

## 13 Floor 1 - Hall



Dimensions: 16'4" x 16'8"  
Area: 170 sq. ft  
Counted as living area: Yes

Heated: Yes  
Finished: Yes  
Enclosed: Yes  
Contiguous: Yes  
Permitted: Yes  
Wet space: No  
Addition: No  
Conversion: No

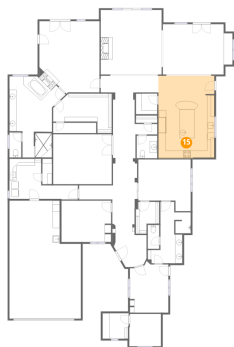
## 14 Floor 1 - Laundry



Dimensions: 19'5" x 11'4"  
Area: 143 sq. ft  
Counted as living area: Yes

Heated: Yes  
Finished: Yes  
Enclosed: Yes  
Contiguous: Yes  
Permitted: Yes  
Wet space: No  
Addition: No  
Conversion: No

**15** Floor 1 - Kitchen



Dimensions: 15'10" x 23'4"  
Area: 368 sq. ft  
Counted as living area: Yes

Heated: Yes  
Finished: Yes  
Enclosed: Yes  
Contiguous: Yes  
Permitted: Yes  
Wet space: No  
Addition: No  
Conversion: No

**16** Floor 1 - Bath



Dimensions: 8'10" x 18'0"  
Area: 126 sq. ft  
Counted as living area: Yes

Heated: Yes  
Finished: Yes  
Enclosed: Yes  
Contiguous: Yes  
Permitted: Yes  
Wet space: Yes  
Addition: No  
Conversion: No

**17** Floor 1 - Bath



Dimensions: 5'10" x 6'5"  
Area: 37 sq. ft  
Counted as living area: Yes

Heated: Yes  
Finished: Yes  
Enclosed: Yes  
Contiguous: Yes  
Permitted: Yes  
Wet space: Yes  
Addition: No  
Conversion: No

**18** Floor 1 - Primary Bath

---



Dimensions: 15'10" x 23'0"  
Area: 263 sq. ft  
Counted as living area: Yes

Heated: Yes  
Finished: Yes  
Enclosed: Yes  
Contiguous: Yes  
Permitted: Yes  
Wet space: Yes  
Addition: No  
Conversion: No

**19** Floor 1 - Office

---



Dimensions: 14'1" x 11'9"  
Area: 164 sq. ft  
Counted as living area: Yes

Heated: Yes  
Finished: Yes  
Enclosed: Yes  
Contiguous: Yes  
Permitted: Yes  
Wet space: No  
Addition: No  
Conversion: No

**20** Floor 1 - Bath

---



Dimensions: 3'3" x 6'9"  
Area: 22 sq. ft  
Counted as living area: Yes

Heated: Yes  
Finished: Yes  
Enclosed: Yes  
Contiguous: Yes  
Permitted: Yes  
Wet space: Yes  
Addition: No  
Conversion: No

**21** Floor 1 - W.I.C.

---



Dimensions: 6'8" x 9'1"  
Area: 49 sq. ft  
Counted as living area: Yes

Heated: Yes  
Finished: Yes  
Enclosed: Yes  
Contiguous: Yes  
Permitted: Yes  
Wet space: No  
Addition: No  
Conversion: No

**22** Floor 1 - Dining Room

---



Dimensions: 19'9" x 14'3"  
Area: 269 sq. ft  
Counted as living area: Yes

Heated: Yes  
Finished: Yes  
Enclosed: Yes  
Contiguous: Yes  
Permitted: Yes  
Wet space: No  
Addition: No  
Conversion: No

**23** Floor 1 - Living Room

---



Dimensions: 10'11" x 14'8"  
Area: 146 sq. ft  
Counted as living area: Yes

Heated: Yes  
Finished: Yes  
Enclosed: Yes  
Contiguous: Yes  
Permitted: Yes  
Wet space: No  
Addition: No  
Conversion: No