

Home report

1012 Almond Drive, Howell, Vinton, Roanoke County, Virginia,
United States, 24179





Total Area: 2610 sq. ft


Below Ground: 867 sq. ft, Floor 2: 1743 sq. ft

Excluded: Utility 234 sq. ft, Basement 414 sq. ft, Garage 520 sq. ft, Porch 48 sq. ft,
Screened porch 223 sq. ft, Deck 142 sq. ft, Walls: 244 sq. ft

Property summary

 **2** Floors

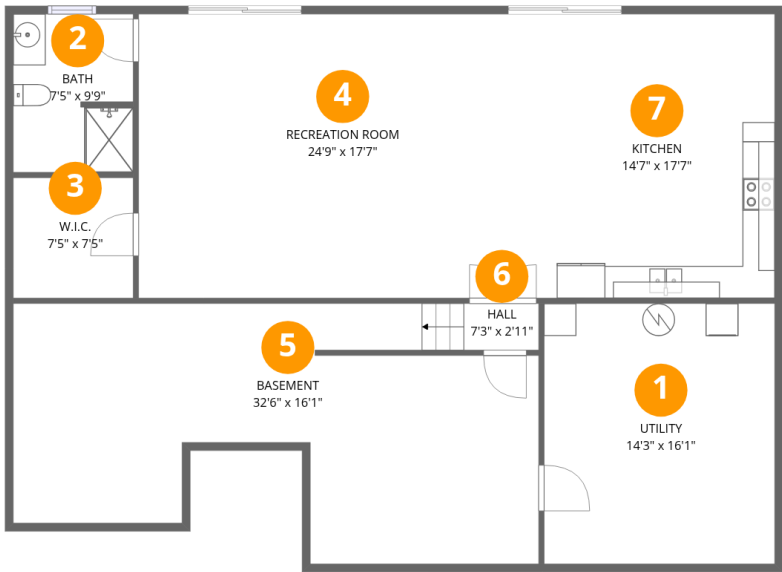
 **3** Bedrooms

 **3** Bathrooms

 **1** Garages

Home report

1012 Almond Drive, Howell, Vinton, Roanoke County, Virginia,
United States, 24179



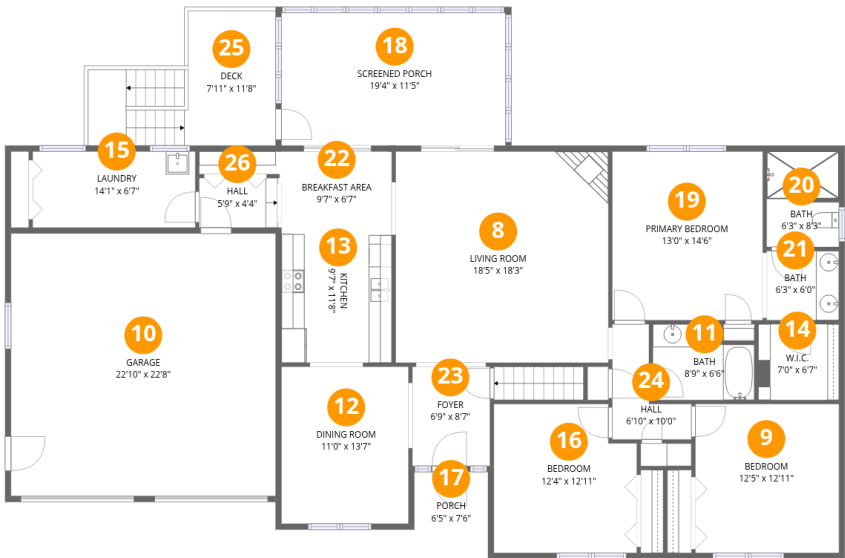
Room dimensions

Floor 1 Below ground Total:867sqft Excluded: 648sqft

#		Max Dimensions	sqft	Included
1	Utility	14'3" x 16'1"	230 sq. ft	No
2	Bath	7'5" x 9'9"	71 sq. ft	Yes
3	W.I.C.	7'5" x 7'5"	55 sq. ft	Yes
4	Recreation Room	24'9" x 17'7"	435 sq. ft	Yes
5	Basement	32'6" x 16'1"	412 sq. ft	No
6	Hall	7'3" x 2'11"	22 sq. ft	Yes
7	Kitchen	14'7" x 17'7"	256 sq. ft	Yes

Home report

1012 Almond Drive, Howell, Vinton, Roanoke County, Virginia,
United States, 24179



Room dimensions

Floor 2 Total:1743sqft Excluded: 933sqft

#		Max Dimensions	sqft	Included
8	Living Room	18'5" x 18'3"	336 sq. ft	Yes
9	Bedroom	12'5" x 12'11"	160 sq. ft	Yes
10	Garage	22'10" x 22'8"	520 sq. ft	No
11	Bath	8'9" x 6'6"	52 sq. ft	Yes
12	Dining Room	11'0" x 13'7"	149 sq. ft	Yes
13	Kitchen	9'7" x 11'8"	112 sq. ft	Yes
14	W.I.C.	7'0" x 6'7"	46 sq. ft	Yes
15	Laundry	14'1" x 6'7"	93 sq. ft	Yes
16	Bedroom	12'4" x 12'11"	151 sq. ft	Yes
17	Porch	6'5" x 7'6"	48 sq. ft	No
18	Screened Porch	19'4" x 11'5"	223 sq. ft	No

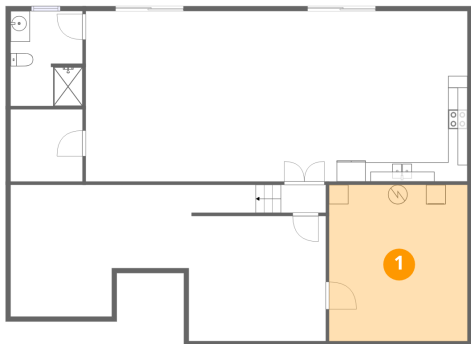
Home report

**1012 Almond Drive, Howell, Vinton, Roanoke County, Virginia,
United States, 24179**

#		Max Dimensions	sqft	Included
19	Primary Bedroom	13'0" x 14'6"	190 sq. ft	Yes
20	Bath	6'3" x 8'3"	51 sq. ft	Yes
21	Bath	6'3" x 6'0"	38 sq. ft	Yes
22	Breakfast Area	9'7" x 6'7"	63 sq. ft	Yes
23	Foyer	6'9" x 8'7"	58 sq. ft	Yes
24	Hall	6'10" x 10'0"	43 sq. ft	Yes
25	Deck	7'11" x 11'8"	142 sq. ft	No
26	Hall	5'9" x 4'4"	29 sq. ft	Yes

1012 Almond Drive, Howell, Vinton, Roanoke County, Virginia,
United States, 24179

1 Floor 1 - Utility



Max Dimensions: 14'3" x 16'1"
Calculated Area: 230 sq. ft
Included: No

Heated: Yes
Finished: No
Enclosed: Yes
Contiguous: Yes
Permitted: Yes
Wet space: No
Addition: No
Conversion: No

2 Floor 1 - Bath



Max Dimensions: 7'5" x 9'9"
Calculated Area: 71 sq. ft
Included: Yes

Heated: Yes
Finished: Yes
Enclosed: Yes
Contiguous: Yes
Permitted: Yes
Wet space: Yes
Addition: No
Conversion: No

1012 Almond Drive, Howell, Vinton, Roanoke County, Virginia,
United States, 24179

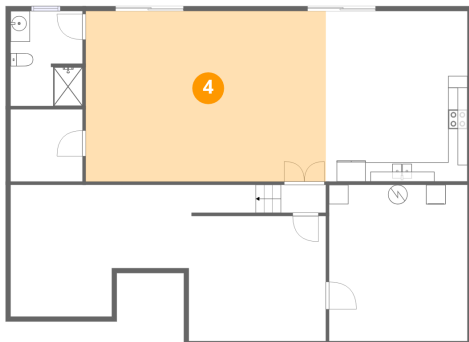
3 Floor 1 - W.I.C.



Max Dimensions: 7'5" x 7'5"
Calculated Area: 55 sq. ft
Included: Yes

Heated: Yes
Finished: Yes
Enclosed: Yes
Contiguous: Yes
Permitted: Yes
Wet space: No
Addition: No
Conversion: No

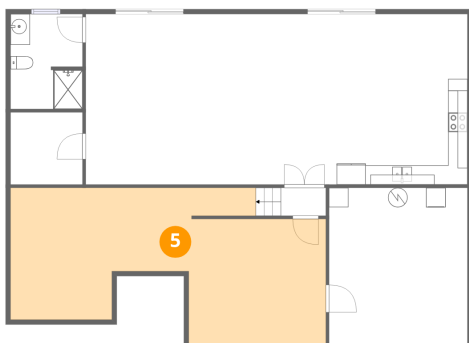
4 Floor 1 - Recreation Room



Max Dimensions: 24'9" x 17'7"
Calculated Area: 435 sq. ft
Included: Yes

Heated: Yes
Finished: Yes
Enclosed: Yes
Contiguous: Yes
Permitted: Yes
Wet space: No
Addition: No
Conversion: No

5 Floor 1 - Basement

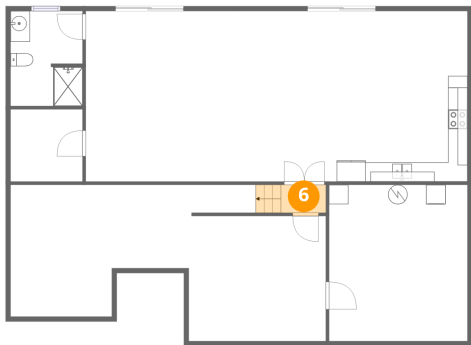


Max Dimensions: 32'6" x 16'1"
Calculated Area: 412 sq. ft
Included: No

Heated: Yes
Finished: No
Enclosed: Yes
Contiguous: Yes
Permitted: Yes
Wet space: No
Addition: No
Conversion: No

1012 Almond Drive, Howell, Vinton, Roanoke County, Virginia,
United States, 24179

6 Floor 1 - Hall



Max Dimensions: 7'3" x 2'11"
Calculated Area: 22 sq. ft
Included: Yes

Heated: Yes
Finished: Yes
Enclosed: Yes
Contiguous: Yes
Permitted: Yes
Wet space: No
Addition: No
Conversion: No

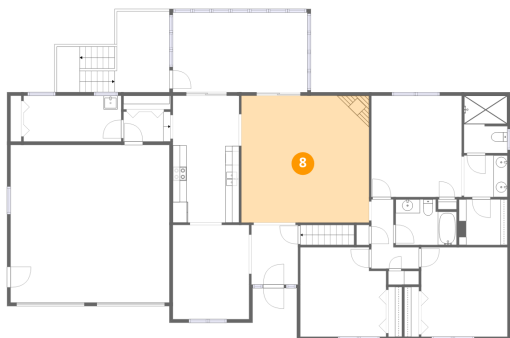
7 Floor 1 - Kitchen



Max Dimensions: 14'7" x 17'7"
Calculated Area: 256 sq. ft
Included: Yes

Heated: Yes
Finished: Yes
Enclosed: Yes
Contiguous: Yes
Permitted: Yes
Wet space: No
Addition: No
Conversion: No

8 Floor 2 - Living Room



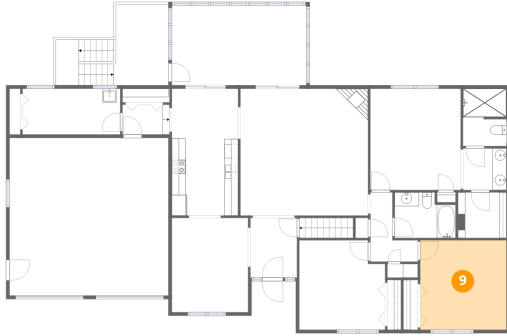
Max Dimensions: 18'5" x 18'3"
Calculated Area: 336 sq. ft
Included: Yes

Heated: Yes
Finished: Yes
Enclosed: Yes
Contiguous: Yes
Permitted: Yes
Wet space: No
Addition: No
Conversion: No

Home report

1012 Almond Drive, Howell, Vinton, Roanoke County, Virginia,
United States, 24179

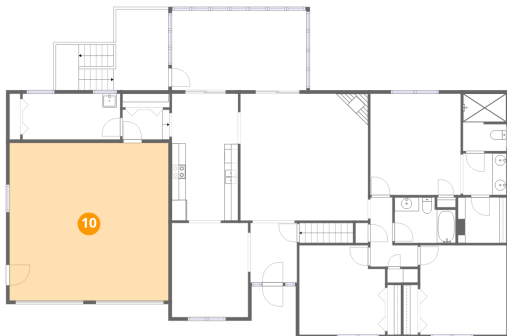
9 Floor 2 - Bedroom



Max Dimensions: 12'5" x 12'11"
Calculated Area: 160 sq. ft
Included: Yes

Heated: Yes
Finished: Yes
Enclosed: Yes
Contiguous: Yes
Permitted: Yes
Wet space: No
Addition: No
Conversion: No

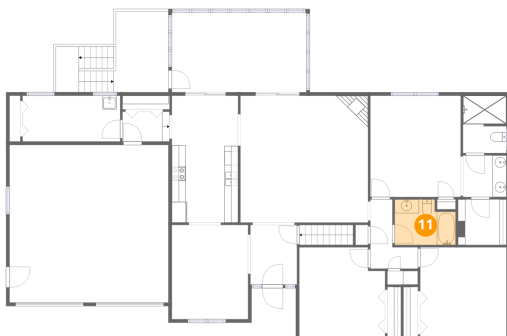
10 Floor 2 - Garage



Max Dimensions: 22'10" x 22'8"
Calculated Area: 520 sq. ft
Included: No

Heated: No
Finished: No
Enclosed: Yes
Contiguous: Yes
Permitted: Yes
Wet space: No
Addition: No
Conversion: No

11 Floor 2 - Bath

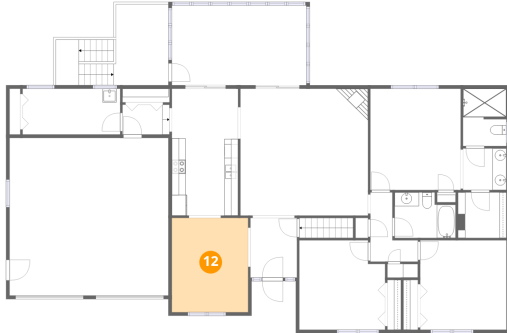


Max Dimensions: 8'9" x 6'6"
Calculated Area: 52 sq. ft
Included: Yes

Heated: Yes
Finished: Yes
Enclosed: Yes
Contiguous: Yes
Permitted: Yes
Wet space: Yes
Addition: No
Conversion: No

1012 Almond Drive, Howell, Vinton, Roanoke County, Virginia,
United States, 24179

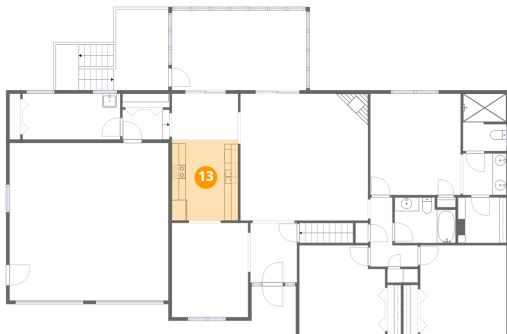
12 Floor 2 - Dining Room



Max Dimensions: 11'0" x 13'7"
Calculated Area: 149 sq. ft
Included: Yes

Heated: Yes
Finished: Yes
Enclosed: Yes
Contiguous: Yes
Permitted: Yes
Wet space: No
Addition: No
Conversion: No

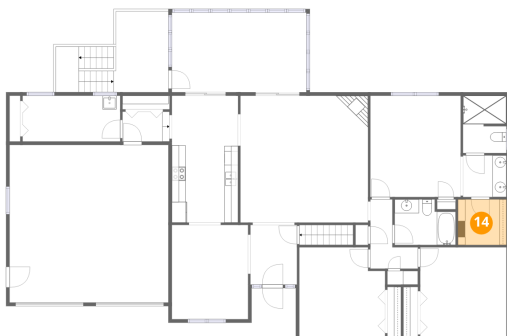
13 Floor 2 - Kitchen



Max Dimensions: 9'7" x 11'8"
Calculated Area: 112 sq. ft
Included: Yes

Heated: Yes
Finished: Yes
Enclosed: Yes
Contiguous: Yes
Permitted: Yes
Wet space: No
Addition: No
Conversion: No

14 Floor 2 - W.I.C.



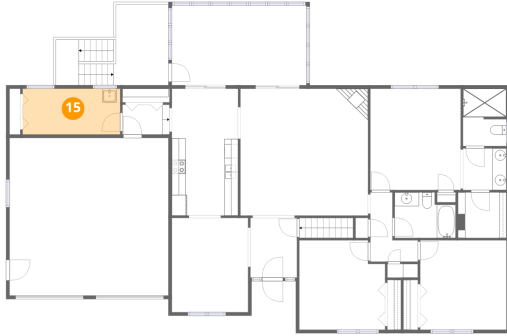
Max Dimensions: 7'0" x 6'7"
Calculated Area: 46 sq. ft
Included: Yes

Heated: Yes
Finished: Yes
Enclosed: Yes
Contiguous: Yes
Permitted: Yes
Wet space: No
Addition: No
Conversion: No

Home report

1012 Almond Drive, Howell, Vinton, Roanoke County, Virginia,
United States, 24179

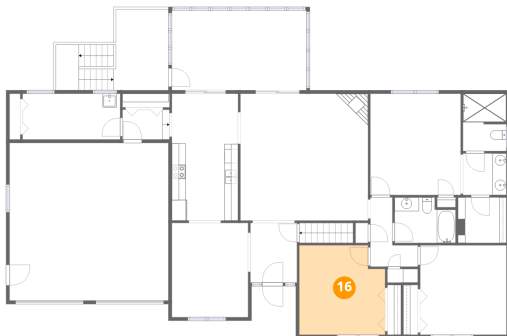
15 Floor 2 - Laundry



Max Dimensions: 14'1" x 6'7"
Calculated Area: 93 sq. ft
Included: Yes

Heated: Yes
Finished: Yes
Enclosed: Yes
Contiguous: Yes
Permitted: Yes
Wet space: No
Addition: No
Conversion: No

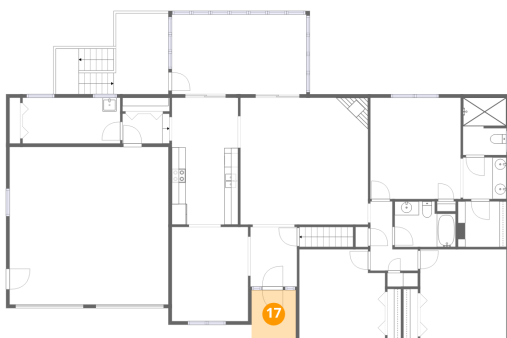
16 Floor 2 - Bedroom



Max Dimensions: 12'4" x 12'11"
Calculated Area: 151 sq. ft
Included: Yes

Heated: Yes
Finished: Yes
Enclosed: Yes
Contiguous: Yes
Permitted: Yes
Wet space: No
Addition: No
Conversion: No

17 Floor 2 - Porch



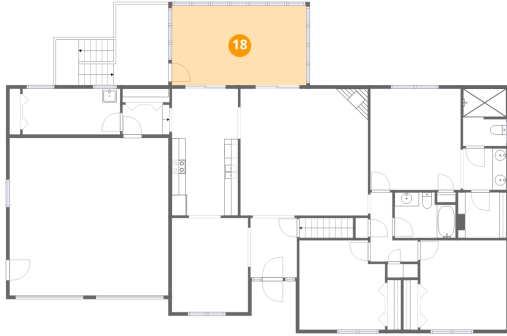
Max Dimensions: 6'5" x 7'6"
Calculated Area: 48 sq. ft
Included: No

Heated: No
Finished: No
Enclosed: No
Contiguous: Yes
Permitted: Yes
Wet space: No
Addition: No
Conversion: No

Home report

1012 Almond Drive, Howell, Vinton, Roanoke County, Virginia,
United States, 24179

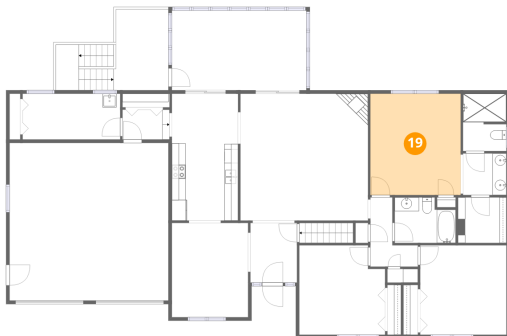
18 Floor 2 - Screened Porch



Max Dimensions: 19'4" x 11'5"
Calculated Area: 223 sq. ft
Included: No

Heated: No
Finished: No
Enclosed: No
Contiguous: Yes
Permitted: Yes
Wet space: No
Addition: No
Conversion: No

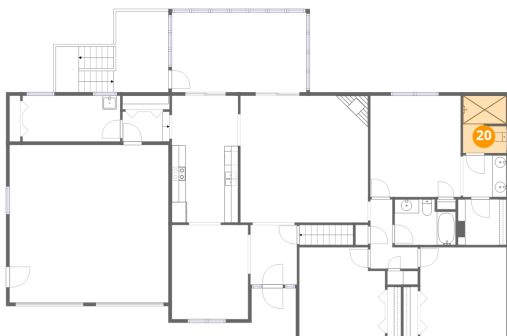
19 Floor 2 - Primary Bedroom



Max Dimensions: 13'0" x 14'6"
Calculated Area: 190 sq. ft
Included: Yes

Heated: Yes
Finished: Yes
Enclosed: Yes
Contiguous: Yes
Permitted: Yes
Wet space: No
Addition: No
Conversion: No

20 Floor 2 - Bath



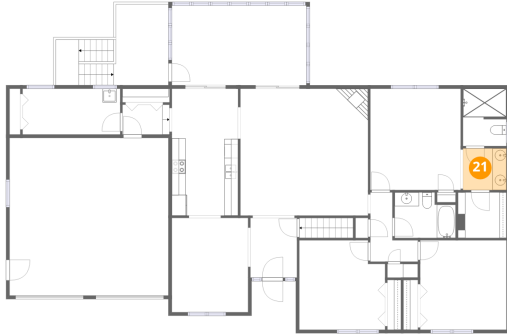
Max Dimensions: 6'3" x 8'3"
Calculated Area: 51 sq. ft
Included: Yes

Heated: Yes
Finished: Yes
Enclosed: Yes
Contiguous: Yes
Permitted: Yes
Wet space: Yes
Addition: No
Conversion: No

Home report

1012 Almond Drive, Howell, Vinton, Roanoke County, Virginia,
United States, 24179

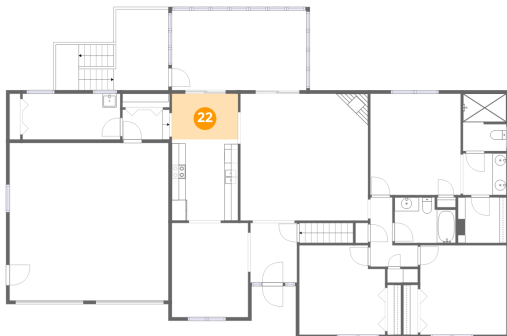
21 Floor 2 - Bath



Max Dimensions: 6'3" x 6'0"
Calculated Area: 38 sq. ft
Included: Yes

Heated: Yes
Finished: Yes
Enclosed: Yes
Contiguous: Yes
Permitted: Yes
Wet space: Yes
Addition: No
Conversion: No

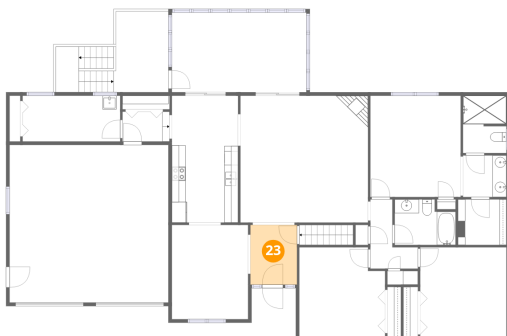
22 Floor 2 - Breakfast Area



Max Dimensions: 9'7" x 6'7"
Calculated Area: 63 sq. ft
Included: Yes

Heated: Yes
Finished: Yes
Enclosed: Yes
Contiguous: Yes
Permitted: Yes
Wet space: No
Addition: No
Conversion: No

23 Floor 2 - Foyer



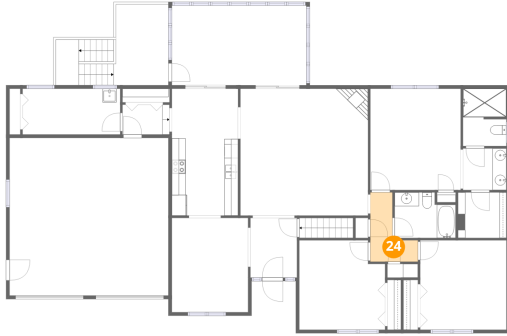
Max Dimensions: 6'9" x 8'7"
Calculated Area: 58 sq. ft
Included: Yes

Heated: Yes
Finished: Yes
Enclosed: Yes
Contiguous: Yes
Permitted: Yes
Wet space: No
Addition: No
Conversion: No

Home report

1012 Almond Drive, Howell, Vinton, Roanoke County, Virginia,
United States, 24179

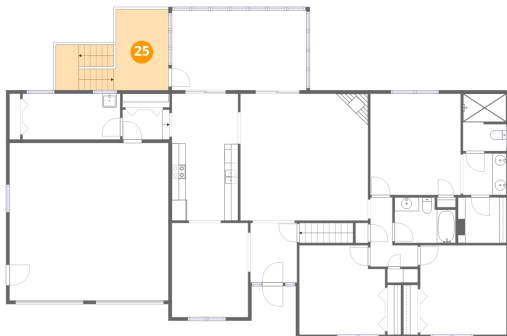
24 Floor 2 - Hall



Max Dimensions: 6'10" x 10'0"
Calculated Area: 43 sq. ft
Included: Yes

Heated: Yes
Finished: Yes
Enclosed: Yes
Contiguous: Yes
Permitted: Yes
Wet space: No
Addition: No
Conversion: No

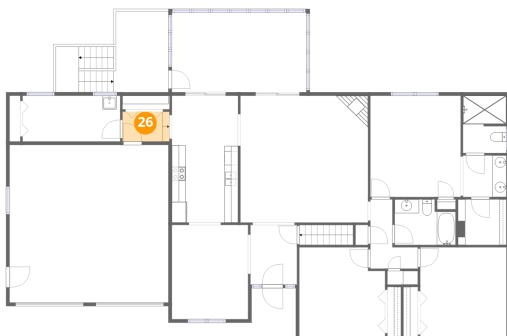
25 Floor 2 - Deck



Max Dimensions: 7'11" x 11'8"
Calculated Area: 142 sq. ft
Included: No

Heated: No
Finished: No
Enclosed: No
Contiguous: Yes
Permitted: Yes
Wet space: No
Addition: No
Conversion: No

26 Floor 2 - Hall



Max Dimensions: 5'9" x 4'4"
Calculated Area: 29 sq. ft
Included: Yes

Heated: Yes
Finished: Yes
Enclosed: Yes
Contiguous: Yes
Permitted: Yes
Wet space: No
Addition: No
Conversion: No