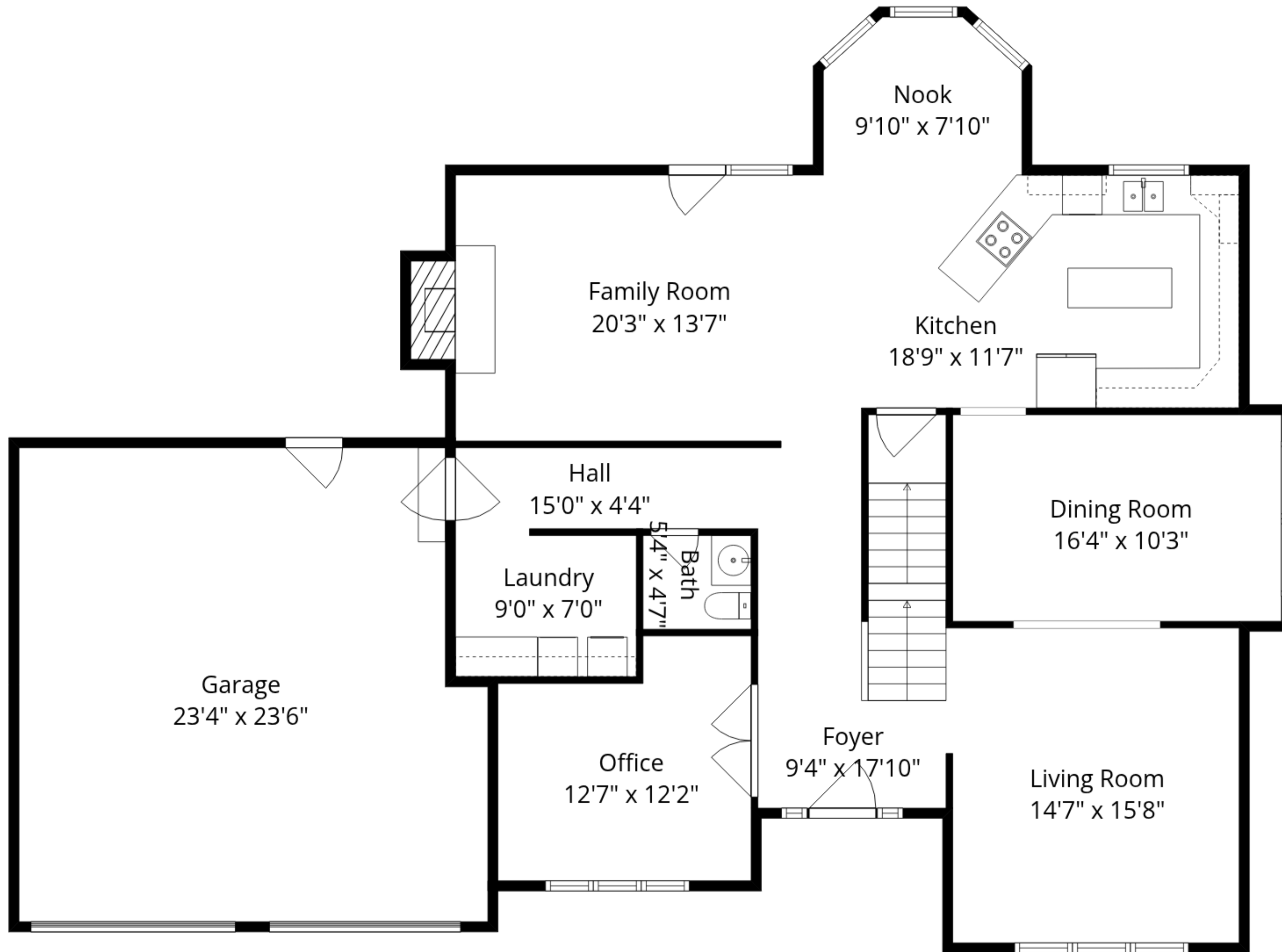


Basement
24'4" x 35'1"

Recreation Room
20'8" x 45'10"

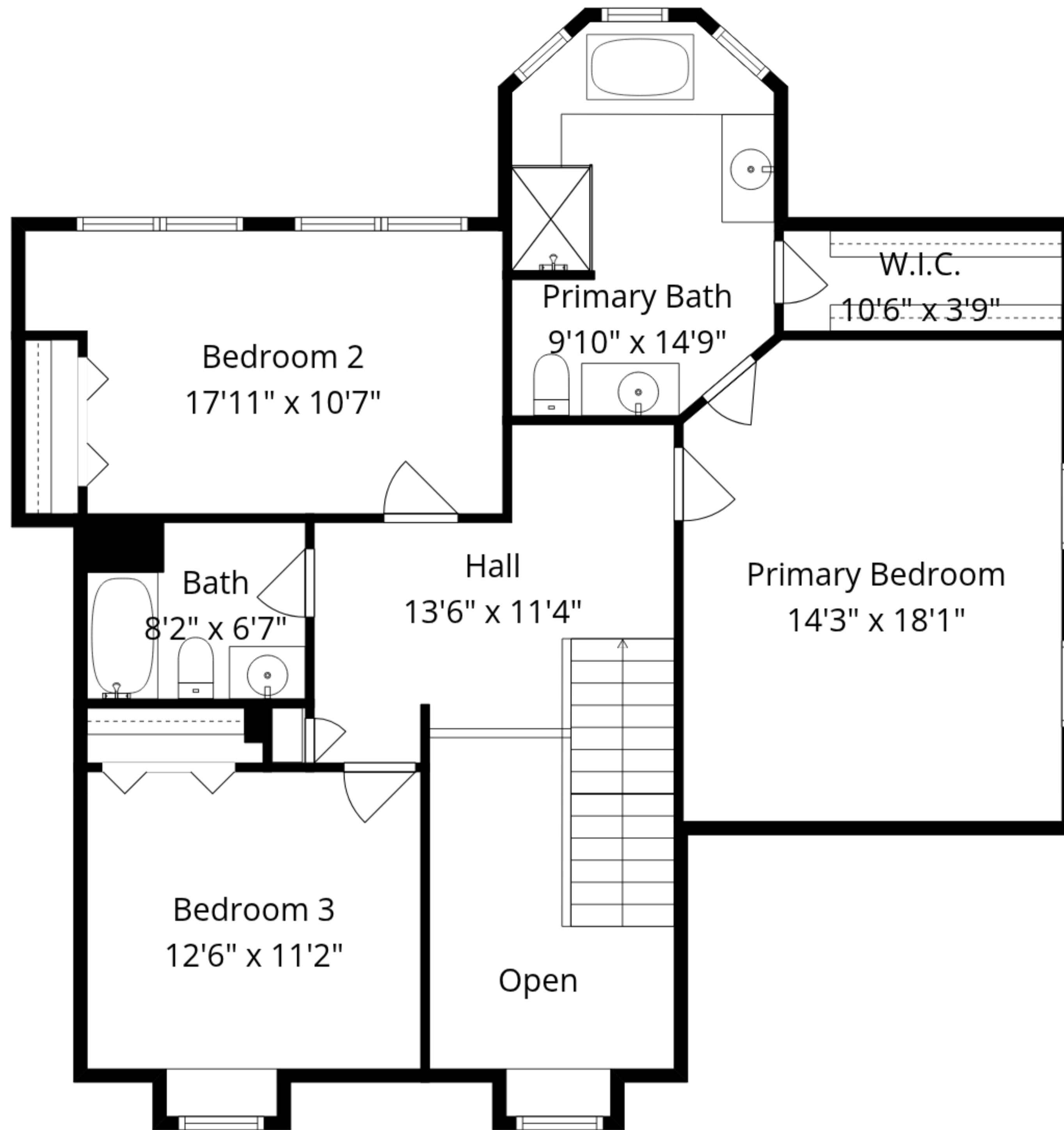
Total GLA: 2637 sq. ft | Total: 4818 sq. ft
Lower floor: (Excluded areas 1508 sq. ft)
Main floor: 1532 sq. ft (Excluded areas 572 sq. ft)
Upper floor: 1105 sq. ft (Excluded areas 101 sq. ft)

Sizes And Dimensions Are Approximate. Actual May Vary.



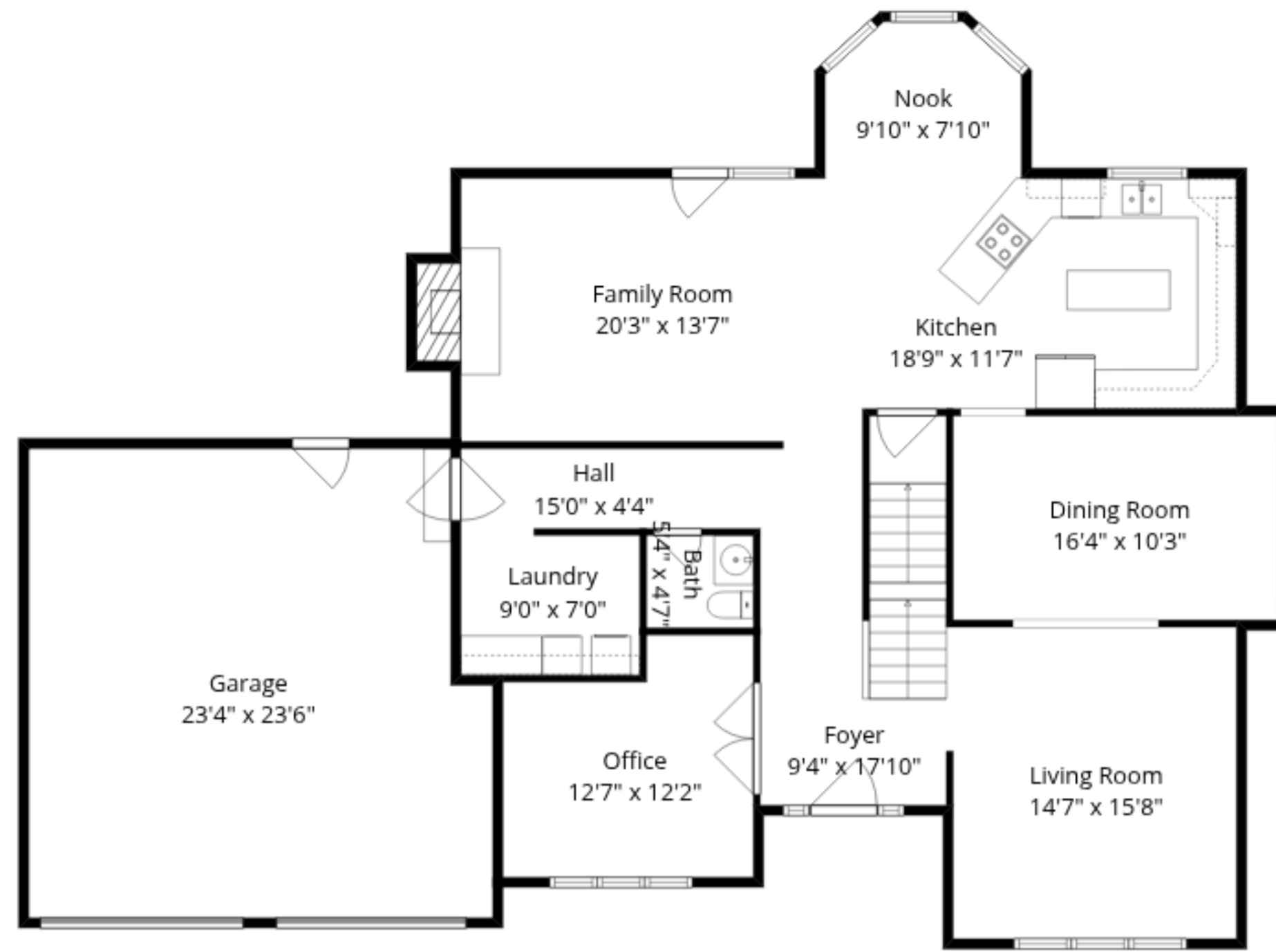
Total GLA: 2637 sq. ft | Total: 4818 sq. ft
 Lower floor: (Excluded areas 1508 sq. ft)
 Main floor: 1532 sq. ft (Excluded areas 572 sq. ft)
 Upper floor: 1105 sq. ft (Excluded areas 101 sq. ft)

Sizes And Dimensions Are Approximate. Actual May Vary.

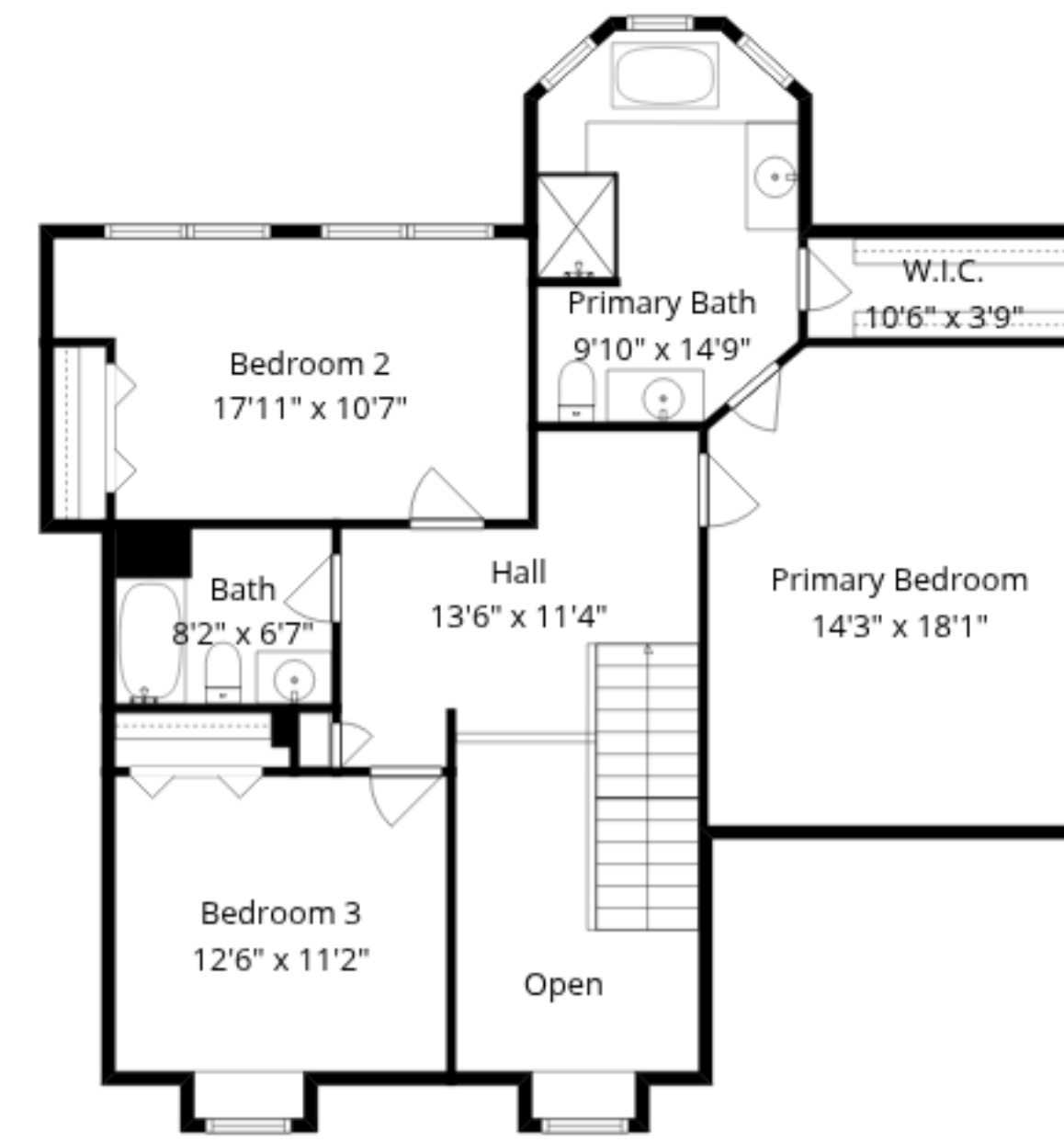


Total GLA: 2637 sq. ft | Total: 4818 sq. ft
 Lower floor: (Excluded areas 1508 sq. ft)
 Main floor: 1532 sq. ft (Excluded areas 572 sq. ft)
 Upper floor: 1105 sq. ft (Excluded areas 101 sq. ft)

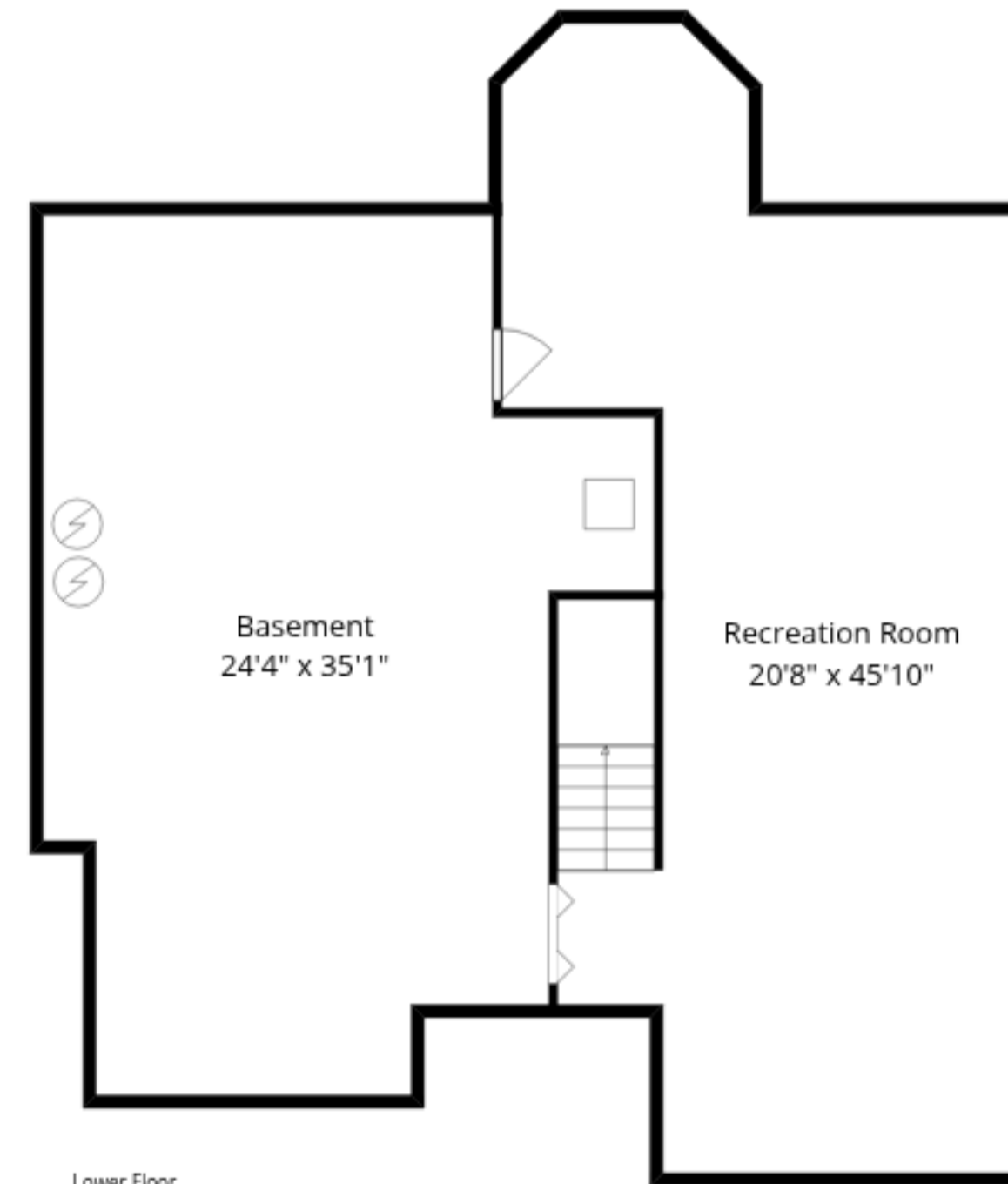
Sizes And Dimensions Are Approximate. Actual May Vary.



Main Floor



Upper Floor



Lower Floor

Total GLA: 2637 sq. ft | Total: 4818 sq. ft
 Lower floor: (Excluded areas 1508 sq. ft)
 Main floor: 1532 sq. ft (Excluded areas 572 sq. ft)
 Upper floor: 1105 sq. ft (Excluded areas 101 sq. ft)

Sizes And Dimensions Are Approximate. Actual May Vary.