

Home data report

65 Ferndale Avenue, Glen Rock, Bergen County, New Jersey, United States, 07452



Total Area: 1934 sq. ft

Basement: 46 sq. ft, 1st Floor: 1293 sq. ft, 2nd Floor: 595 sq. ft

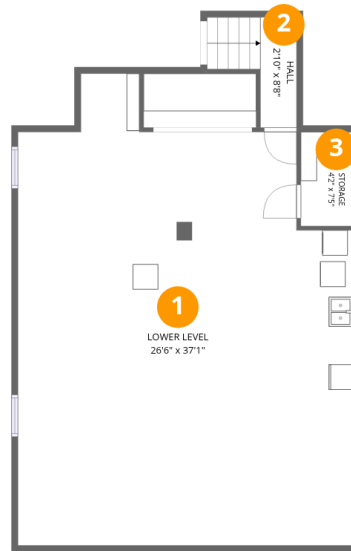
Excluded: Lower level 856 sq. ft, Storage 107 sq. ft, Undefined 38 sq. ft, Patio 62 sq. ft, Walls: 215 sq. ft

Property summary



Home data report

65 Ferndale Avenue, Glen Rock, Bergen County, New Jersey, United States, 07452



Room dimensions

Floor 1 Below grade

Total:46sqft

Excluded: 925sqft

#		Dimensions	sqft	Counted as living area
1	Lower Level	26'6" x 37'1"	847 sq. ft	No
2	Hall	2'10" x 8'8"	42 sq. ft	Yes
3	Storage	4'2" x 7'5"	31 sq. ft	No

Home data report

65 Ferndale Avenue, Glen Rock, Bergen County, New Jersey, United States, 07452



Room dimensions

Floor 2

Total:1293sqft Excluded: 62sqft

#		Dimensions	sqft	Counted as living area
4	Hall	6'3" x 9'3"	37 sq. ft	Yes
5	Entry	6'10" x 3'5"	37 sq. ft	Yes
6	Patio	22'3" x 2'9"	62 sq. ft	No
7	Bath	6'5" x 6'6"	37 sq. ft	Yes
8	Entry	3'6" x 4'1"	33 sq. ft	Yes
9	All Season Porch	23'1" x 7'8"	176 sq. ft	Yes
10	Kitchen	11'0" x 18'3"	202 sq. ft	Yes
11	Primary Bedroom	11'2" x 15'7"	172 sq. ft	Yes
12	Living Room	13'11" x 11'8"	162 sq. ft	Yes
13	Hall	3'6" x 3'11"	14 sq. ft	Yes
14	W.I.C.	3'6" x 8'1"	29 sq. ft	Yes

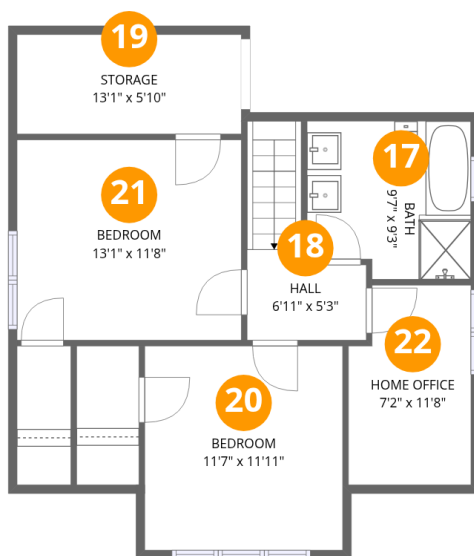
Home data report

**65 Ferndale Avenue, Glen Rock, Bergen County, New Jersey,
United States, 07452**

#		Dimensions	sqft	Counted as living area
15	Bedroom	12'2" x 11'8"	142 sq. ft	Yes
16	Dining Room	13'1" x 11'8"	152 sq. ft	Yes

Home data report

65 Ferndale Avenue, Glen Rock, Bergen County, New Jersey, United States, 07452



Room dimensions

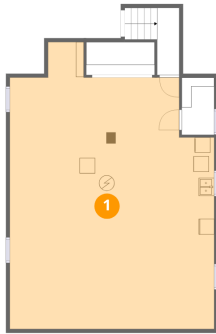
Floor 3

Total:595sqft Excluded: 76sqft

#		Dimensions	sqft	Counted as living area
17	Bath	9'7" x 9'3"	84 sq. ft	Yes
18	Hall	6'11" x 5'3"	57 sq. ft	Yes
19	Storage	13'1" x 5'10"	76 sq. ft	No
20	Bedroom	11'7" x 11'11"	137 sq. ft	Yes
21	Bedroom	13'1" x 11'8"	153 sq. ft	Yes
22	Home Office	7'2" x 11'8"	78 sq. ft	Yes

65 Ferndale Avenue, Glen Rock, Bergen County, New Jersey,
United States, 07452

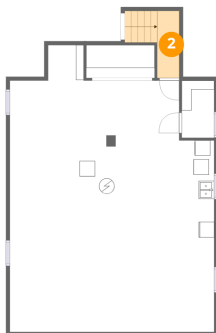
1 Floor 1 - Lower Level



Dimensions: 26'6" x 37'1"
Area: 847 sq. ft
Counted as living area: No

Heated: Yes
Finished: No
Enclosed: Yes
Contiguous: Yes
Permitted: Yes
Wet space: No
Addition: No
Conversion: No

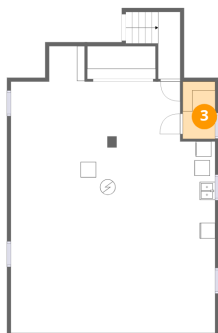
2 Floor 1 - Hall



Dimensions: 2'10" x 8'8"
Area: 42 sq. ft
Counted as living area: Yes

Heated: Yes
Finished: Yes
Enclosed: Yes
Contiguous: Yes
Permitted: Yes
Wet space: No
Addition: No
Conversion: No

3 Floor 1 - Storage



Dimensions: 4'2" x 7'5"
Area: 31 sq. ft
Counted as living area: No

Heated: No
Finished: No
Enclosed: No
Contiguous: Yes
Permitted: Yes
Wet space: No
Addition: No
Conversion: No

4 Floor 2 - Hall



Dimensions: 6'3" x 9'3"
Area: 37 sq. ft
Counted as living area: Yes

Heated: Yes
Finished: Yes
Enclosed: Yes
Contiguous: Yes
Permitted: Yes
Wet space: No
Addition: No
Conversion: No

5 Floor 2 - Entry



Dimensions: 6'10" x 3'5"
Area: 37 sq. ft
Counted as living area: Yes

Heated: Yes
Finished: Yes
Enclosed: Yes
Contiguous: Yes
Permitted: Yes
Wet space: No
Addition: No
Conversion: No

6 Floor 2 - Patio



Dimensions: 22'3" x 2'9"
Area: 62 sq. ft
Counted as living area: No

Heated: No
Finished: No
Enclosed: No
Contiguous: Yes
Permitted: Yes
Wet space: No
Addition: No
Conversion: No

7 Floor 2 - Bath



Dimensions: 6'5" x 6'6"
Area: 37 sq. ft
Counted as living area: Yes

Heated: Yes
Finished: Yes
Enclosed: Yes
Contiguous: Yes
Permitted: Yes
Wet space: Yes
Addition: No
Conversion: No

8 Floor 2 - Entry



Dimensions: 3'6" x 4'1"
Area: 33 sq. ft
Counted as living area: Yes

Heated: Yes
Finished: Yes
Enclosed: Yes
Contiguous: Yes
Permitted: Yes
Wet space: No
Addition: No
Conversion: No

65 Ferndale Avenue, Glen Rock, Bergen County, New Jersey,
United States, 07452

9 Floor 2 - All Season Porch



Dimensions: 23'1" x 7'8"
Area: 176 sq. ft
Counted as living area: Yes

Heated: Yes
Finished: Yes
Enclosed: Yes
Contiguous: Yes
Permitted: Yes
Wet space: No
Addition: No
Conversion: No

10 Floor 2 - Kitchen



Dimensions: 11'0" x 18'3"
Area: 202 sq. ft
Counted as living area: Yes

Heated: Yes
Finished: Yes
Enclosed: Yes
Contiguous: Yes
Permitted: Yes
Wet space: No
Addition: No
Conversion: No

11 Floor 2 - Primary Bedroom



Dimensions: 11'2" x 15'7"
Area: 172 sq. ft
Counted as living area: Yes

Heated: Yes
Finished: Yes
Enclosed: Yes
Contiguous: Yes
Permitted: Yes
Wet space: No
Addition: No
Conversion: No

12 Floor 2 - Living Room



Dimensions: 13'11" x 11'8"
Area: 162 sq. ft
Counted as living area: Yes

Heated: Yes
Finished: Yes
Enclosed: Yes
Contiguous: Yes
Permitted: Yes
Wet space: No
Addition: No
Conversion: No

13 Floor 2 - Hall



Dimensions: 3'6" x 3'11"
Area: 14 sq. ft
Counted as living area: Yes

Heated: Yes
Finished: Yes
Enclosed: Yes
Contiguous: Yes
Permitted: Yes
Wet space: No
Addition: No
Conversion: No

14 Floor 2 - W.I.C.



Dimensions: 3'6" x 8'1"
Area: 29 sq. ft
Counted as living area: Yes

Heated: Yes
Finished: Yes
Enclosed: Yes
Contiguous: Yes
Permitted: Yes
Wet space: No
Addition: No
Conversion: No

15 Floor 2 - Bedroom



Dimensions: 12'2" x 11'8"
Area: 142 sq. ft
Counted as living area: Yes

Heated: Yes
Finished: Yes
Enclosed: Yes
Contiguous: Yes
Permitted: Yes
Wet space: No
Addition: No
Conversion: No

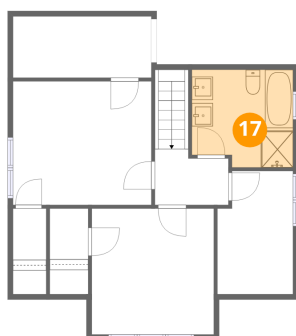
16 Floor 2 - Dining Room



Dimensions: 13'1" x 11'8"
Area: 152 sq. ft
Counted as living area: Yes

Heated: Yes
Finished: Yes
Enclosed: Yes
Contiguous: Yes
Permitted: Yes
Wet space: No
Addition: No
Conversion: No

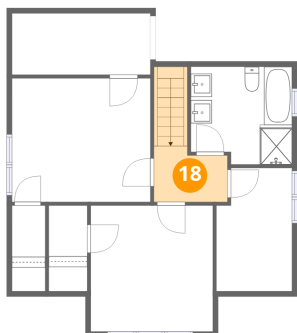
17 Floor 3 - Bath



Dimensions: 9'7" x 9'3"
Area: 84 sq. ft
Counted as living area: Yes

Heated: Yes
Finished: Yes
Enclosed: Yes
Contiguous: Yes
Permitted: Yes
Wet space: Yes
Addition: No
Conversion: No

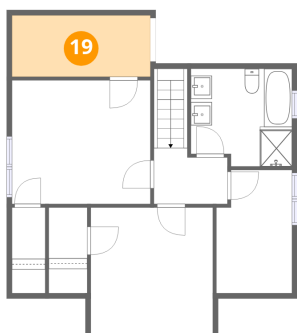
18 Floor 3 - Hall



Dimensions: 6'11" x 5'3"
Area: 57 sq. ft
Counted as living area: Yes

Heated: Yes
Finished: Yes
Enclosed: Yes
Contiguous: Yes
Permitted: Yes
Wet space: No
Addition: No
Conversion: No

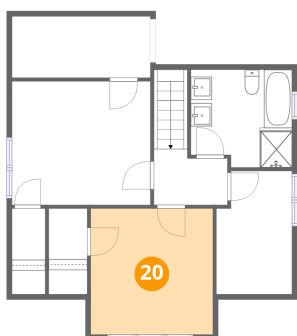
19 Floor 3 - Storage



Dimensions: 13'1" x 5'10"
Area: 76 sq. ft
Counted as living area: No

Heated: No
Finished: No
Enclosed: No
Contiguous: No
Permitted: Yes
Wet space: No
Addition: No
Conversion: No

20 Floor 3 - Bedroom

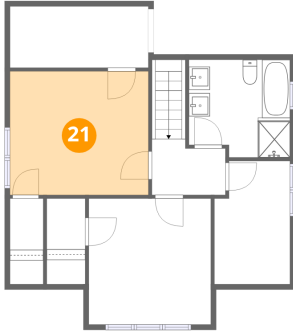


Dimensions: 11'7" x 11'11"
Area: 137 sq. ft
Counted as living area: Yes

Heated: Yes
Finished: Yes
Enclosed: Yes
Contiguous: Yes
Permitted: Yes
Wet space: No
Addition: No
Conversion: No

65 Ferndale Avenue, Glen Rock, Bergen County, New Jersey,
United States, 07452

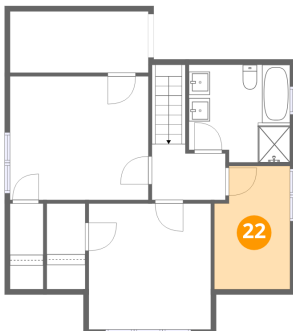
21 Floor 3 - Bedroom



Dimensions: 13'1" x 11'8"
Area: 153 sq. ft
Counted as living area: Yes

Heated: Yes
Finished: Yes
Enclosed: Yes
Contiguous: Yes
Permitted: Yes
Wet space: No
Addition: No
Conversion: No

22 Floor 3 - Home Office



Dimensions: 7'2" x 11'8"
Area: 78 sq. ft
Counted as living area: Yes

Heated: Yes
Finished: Yes
Enclosed: Yes
Contiguous: Yes
Permitted: Yes
Wet space: No
Addition: No
Conversion: No