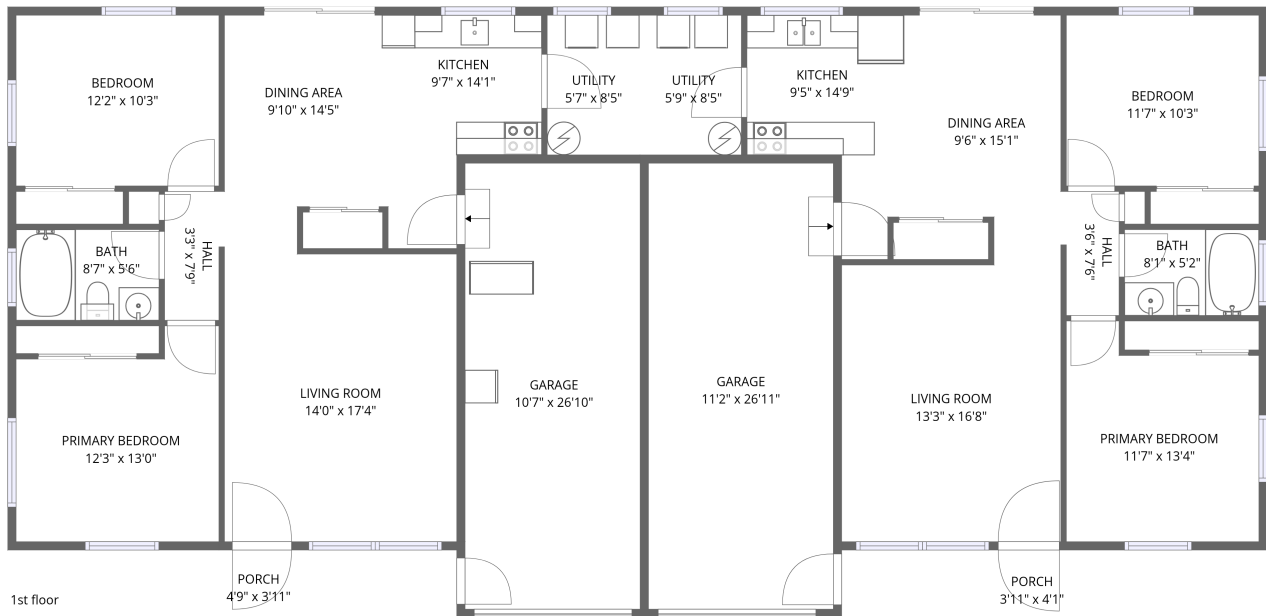


Home data report

3124 Birchwood St, Stevensville, MI, US



Total Area: 1835 sq. ft

1st Floor: 1835 sq. ft

Excluded: Garage 584 sq. ft, Porch 35 sq. ft, Walls: 159 sq. ft

Property summary

 **1** Floors

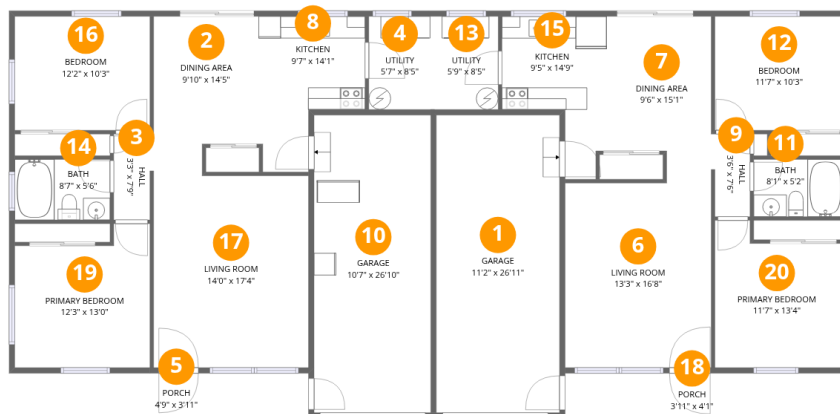
 **4** Bedrooms

 **2** Bathrooms

 **2** Garages

Home data report

3124 Birchwood St,Stevensville,MI,US



Room dimensions

Floor 1

Total:1835sqft Excluded: 619sqft

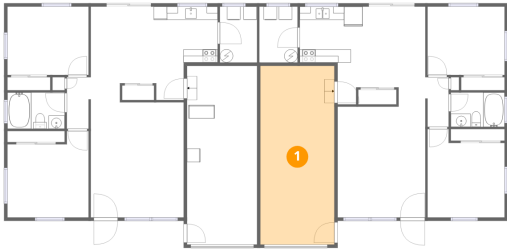
#		Dimensions	sqft	Counted as living area
1	Garage	11'2" x 26'11"	300 sq. ft	No
2	Dining Area	9'10" x 14'5"	123 sq. ft	Yes
3	Hall	3'3" x 7'9"	25 sq. ft	Yes
4	Utility	5'7" x 8'5"	47 sq. ft	Yes
5	Porch	4'9" x 3'11"	19 sq. ft	No
6	Living Room	13'3" x 16'8"	221 sq. ft	Yes
7	Dining Area	9'6" x 15'1"	127 sq. ft	Yes
8	Kitchen	9'7" x 14'1"	105 sq. ft	Yes
9	Hall	3'6" x 7'6"	25 sq. ft	Yes
10	Garage	10'7" x 26'10"	284 sq. ft	No
11	Bath	8'1" x 5'2"	42 sq. ft	Yes

Home data report

3124 Birchwood St,Stevensville,MI,US

#		Dimensions	sqft	Counted as living area
12	Bedroom	11'7" x 10'3"	120 sq. ft	Yes
13	Utility	5'9" x 8'5"	49 sq. ft	Yes
14	Bath	8'7" x 5'6"	47 sq. ft	Yes
15	Kitchen	9'5" x 14'9"	101 sq. ft	Yes
16	Bedroom	12'2" x 10'3"	126 sq. ft	Yes
17	Living Room	14'0" x 17'4"	243 sq. ft	Yes
18	Porch	3'11" x 4'1"	16 sq. ft	No
19	Primary Bedroom	12'3" x 13'0"	141 sq. ft	Yes
20	Primary Bedroom	11'7" x 13'4"	137 sq. ft	Yes

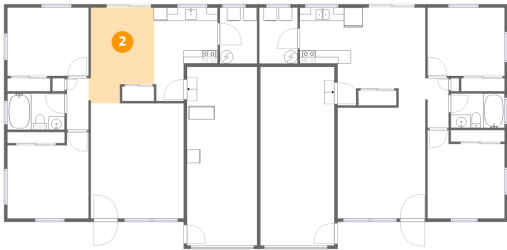
1 Floor 1 - Garage



Dimensions: 11'2" x 26'11"
Area: 300 sq. ft
Counted as living area: No

Heated: No
Finished: No
Enclosed: Yes
Contiguous: Yes
Permitted: Yes
Wet space: No
Addition: No
Conversion: No

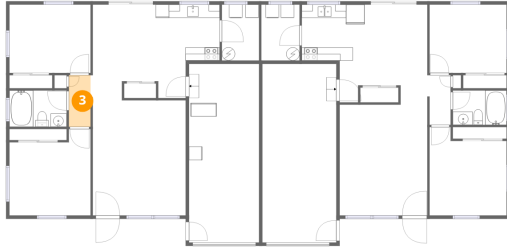
2 Floor 1 - Dining Area



Dimensions: 9'10" x 14'5"
Area: 123 sq. ft
Counted as living area: Yes

Heated: Yes
Finished: Yes
Enclosed: Yes
Contiguous: Yes
Permitted: Yes
Wet space: No
Addition: No
Conversion: No

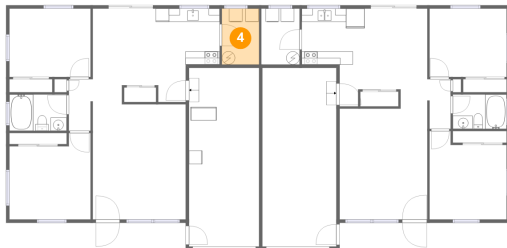
3 Floor 1 - Hall



Dimensions: 3'3" x 7'9"
Area: 25 sq. ft
Counted as living area: Yes

Heated: Yes
Finished: Yes
Enclosed: Yes
Contiguous: Yes
Permitted: Yes
Wet space: No
Addition: No
Conversion: No

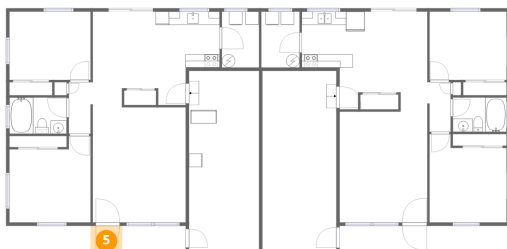
4 Floor 1 - Utility



Dimensions: 5'7" x 8'5"
Area: 47 sq. ft
Counted as living area: Yes

Heated: Yes
Finished: Yes
Enclosed: Yes
Contiguous: Yes
Permitted: Yes
Wet space: No
Addition: No
Conversion: No

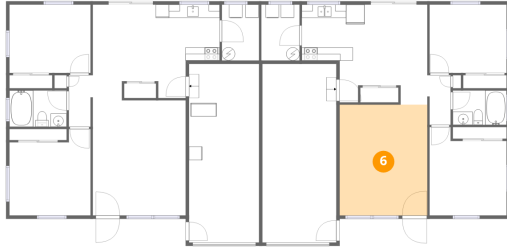
5 Floor 1 - Porch



Dimensions: 4'9" x 3'11"
Area: 19 sq. ft
Counted as living area: No

Heated: No
Finished: No
Enclosed: No
Contiguous: Yes
Permitted: Yes
Wet space: No
Addition: No
Conversion: No

6 Floor 1 - Living Room



Dimensions: 13'3" x 16'8"
Area: 221 sq. ft
Counted as living area: Yes

Heated: Yes
Finished: Yes
Enclosed: Yes
Contiguous: Yes
Permitted: Yes
Wet space: No
Addition: No
Conversion: No

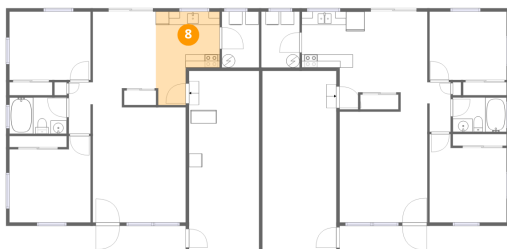
7 Floor 1 - Dining Area



Dimensions: 9'6" x 15'1"
Area: 127 sq. ft
Counted as living area: Yes

Heated: Yes
Finished: Yes
Enclosed: Yes
Contiguous: Yes
Permitted: Yes
Wet space: No
Addition: No
Conversion: No

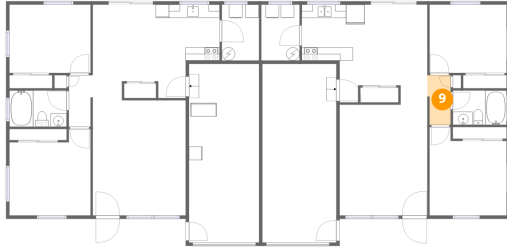
8 Floor 1 - Kitchen



Dimensions: 9'7" x 14'1"
Area: 105 sq. ft
Counted as living area: Yes

Heated: Yes
Finished: Yes
Enclosed: Yes
Contiguous: Yes
Permitted: Yes
Wet space: No
Addition: No
Conversion: No

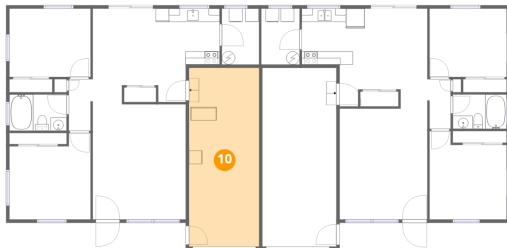
9 Floor 1 - Hall



Dimensions: 3'6" x 7'6"
Area: 25 sq. ft
Counted as living area: Yes

Heated: Yes
Finished: Yes
Enclosed: Yes
Contiguous: Yes
Permitted: Yes
Wet space: No
Addition: No
Conversion: No

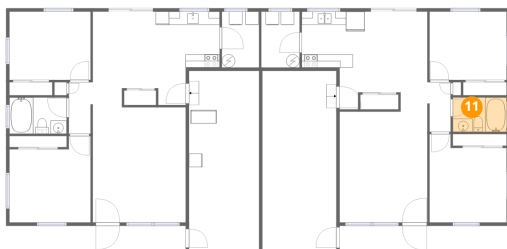
10 Floor 1 - Garage



Dimensions: 10'7" x 26'10"
Area: 284 sq. ft
Counted as living area: No

Heated: No
Finished: No
Enclosed: Yes
Contiguous: Yes
Permitted: Yes
Wet space: No
Addition: No
Conversion: No

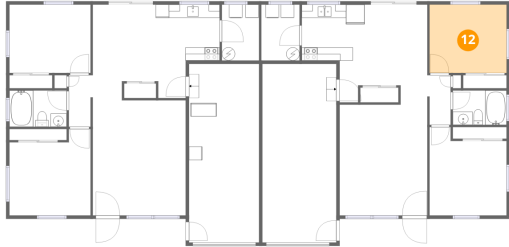
11 Floor 1 - Bath



Dimensions: 8'1" x 5'2"
Area: 42 sq. ft
Counted as living area: Yes

Heated: Yes
Finished: Yes
Enclosed: Yes
Contiguous: Yes
Permitted: Yes
Wet space: Yes
Addition: No
Conversion: No

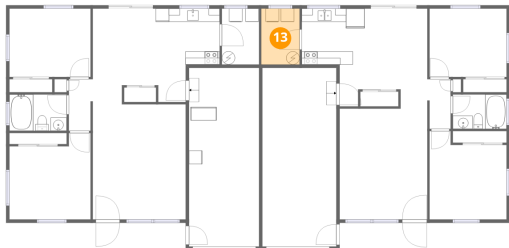
12 Floor 1 - Bedroom



Dimensions: 11'7" x 10'3"
Area: 120 sq. ft
Counted as living area: Yes

Heated: Yes
Finished: Yes
Enclosed: Yes
Contiguous: Yes
Permitted: Yes
Wet space: No
Addition: No
Conversion: No

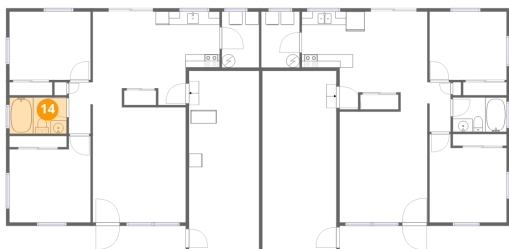
13 Floor 1 - Utility



Dimensions: 5'9" x 8'5"
Area: 49 sq. ft
Counted as living area: Yes

Heated: Yes
Finished: Yes
Enclosed: Yes
Contiguous: Yes
Permitted: Yes
Wet space: No
Addition: No
Conversion: No

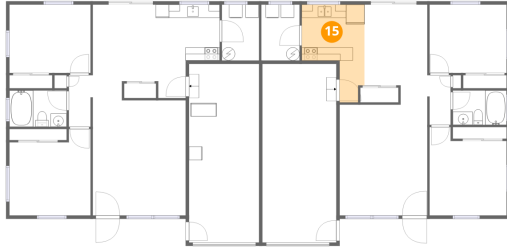
14 Floor 1 - Bath



Dimensions: 8'7" x 5'6"
Area: 47 sq. ft
Counted as living area: Yes

Heated: Yes
Finished: Yes
Enclosed: Yes
Contiguous: Yes
Permitted: Yes
Wet space: Yes
Addition: No
Conversion: No

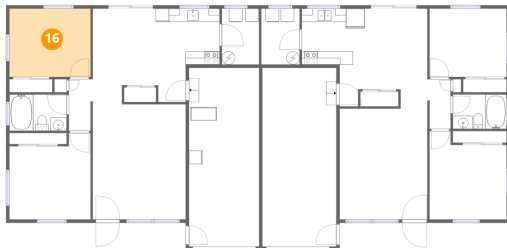
15 Floor 1 - Kitchen



Dimensions: 9'5" x 14'9"
Area: 101 sq. ft
Counted as living area: Yes

Heated: Yes
Finished: Yes
Enclosed: Yes
Contiguous: Yes
Permitted: Yes
Wet space: No
Addition: No
Conversion: No

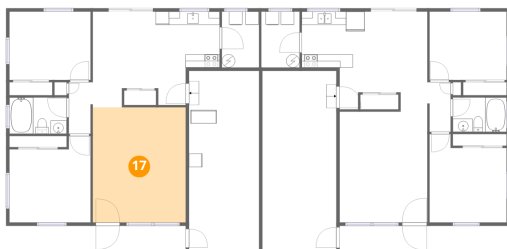
16 Floor 1 - Bedroom



Dimensions: 12'2" x 10'3"
Area: 126 sq. ft
Counted as living area: Yes

Heated: Yes
Finished: Yes
Enclosed: Yes
Contiguous: Yes
Permitted: Yes
Wet space: No
Addition: No
Conversion: No

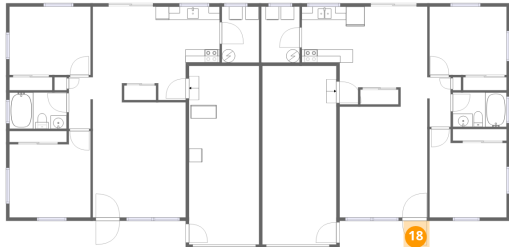
17 Floor 1 - Living Room



Dimensions: 14'0" x 17'4"
Area: 243 sq. ft
Counted as living area: Yes

Heated: Yes
Finished: Yes
Enclosed: Yes
Contiguous: Yes
Permitted: Yes
Wet space: No
Addition: No
Conversion: No

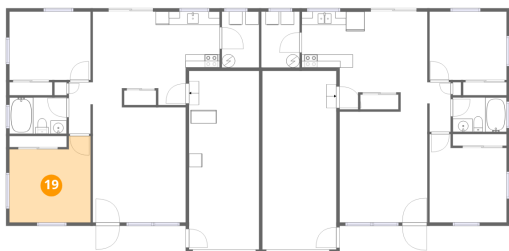
18 Floor 1 - Porch



Dimensions: 3'11" x 4'1"
Area: 16 sq. ft
Counted as living area: No

Heated: No
Finished: No
Enclosed: No
Contiguous: Yes
Permitted: Yes
Wet space: No
Addition: No
Conversion: No

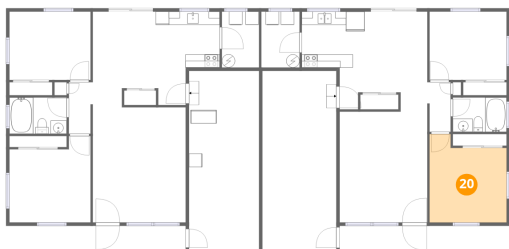
19 Floor 1 - Primary Bedroom



Dimensions: 12'3" x 13'0"
Area: 141 sq. ft
Counted as living area: Yes

Heated: Yes
Finished: Yes
Enclosed: Yes
Contiguous: Yes
Permitted: Yes
Wet space: No
Addition: No
Conversion: No

20 Floor 1 - Primary Bedroom



Dimensions: 11'7" x 13'4"
Area: 137 sq. ft
Counted as living area: Yes

Heated: Yes
Finished: Yes
Enclosed: Yes
Contiguous: Yes
Permitted: Yes
Wet space: No
Addition: No
Conversion: No