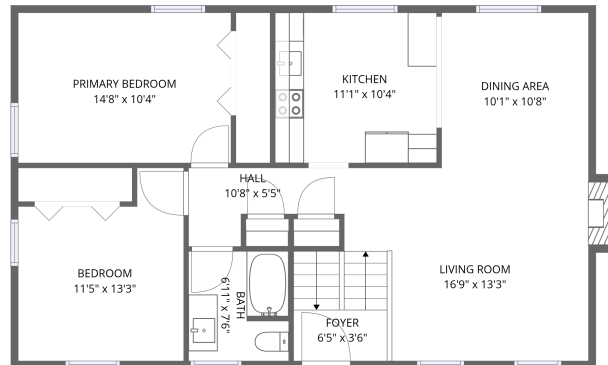
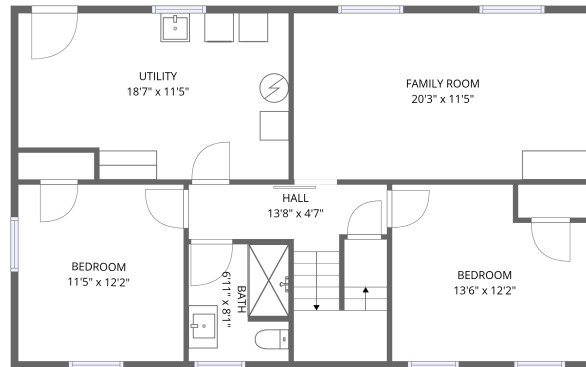


Home data report

2630 Puckett Circle, Salem, Virginia, United States



2nd floor



1st floor

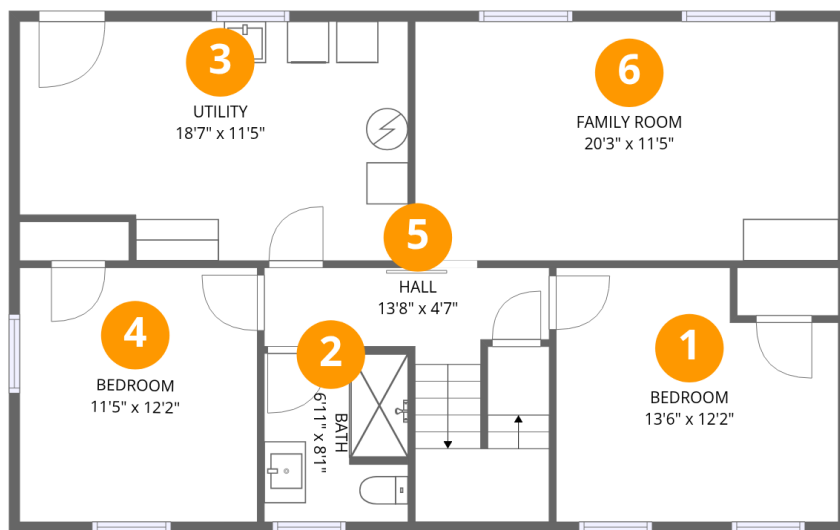
**Total Area: 1679 sq. ft**

1st Floor: 738 sq. ft, 2nd Floor: 941 sq. ft

Excluded: Utility 201 sq. ft, Fireplace 8 sq. ft, Walls: 126 sq. ft

## Property summary



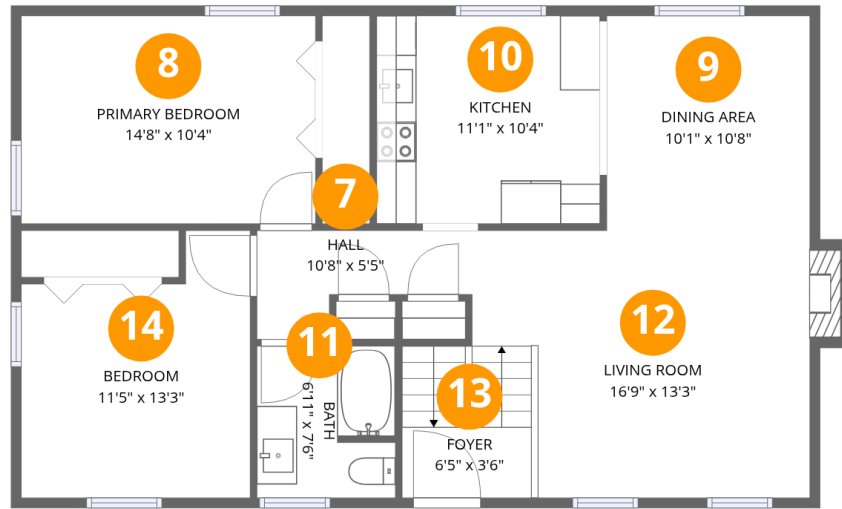


## Room dimensions

Floor 1

Total: 738 sqft Excluded: 201 sqft

#		Dimensions	sqft	Counted as living area
1	Bedroom	13'6" x 12'2"	164 sq. ft	Yes
2	Bath	6'11" x 8'1"	56 sq. ft	Yes
3	Utility	18'7" x 11'5"	213 sq. ft	No
4	Bedroom	11'5" x 12'2"	138 sq. ft	Yes
5	Hall	13'8" x 4'7"	63 sq. ft	Yes
6	Family Room	20'3" x 11'5"	232 sq. ft	Yes



## Room dimensions

Floor 2

Total: 941 sqft

Excluded: 8 sqft

#		Dimensions	sqft	Counted as living area
7	Hall	10'8" x 5'5"	58 sq. ft	Yes
8	Primary Bedroom	14'8" x 10'4"	151 sq. ft	Yes
9	Dining Area	10'1" x 10'8"	108 sq. ft	Yes
10	Kitchen	11'1" x 10'4"	115 sq. ft	Yes
11	Bath	6'11" x 7'6"	52 sq. ft	Yes
12	Living Room	16'9" x 13'3"	223 sq. ft	Yes
13	Foyer	6'5" x 3'6"	23 sq. ft	Yes
14	Bedroom	11'5" x 13'3"	151 sq. ft	Yes

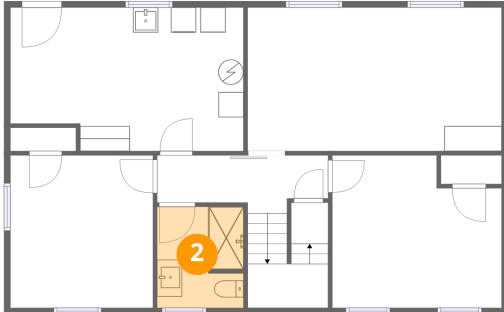
## 1 Floor 1 - Bedroom



Dimensions: 13'6" x 12'2"  
Area: 164 sq. ft  
Counted as living area: Yes

Heated: Yes  
Finished: Yes  
Enclosed: Yes  
Contiguous: Yes  
Permitted: Yes  
Wet space: No  
Addition: No  
Conversion: No

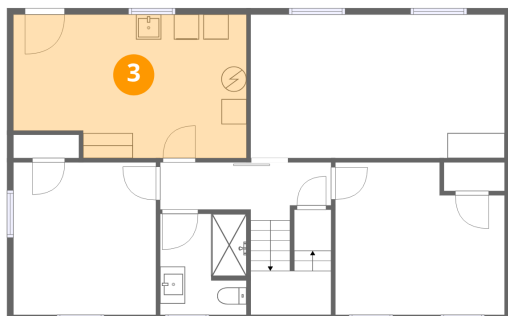
## 2 Floor 1 - Bath



Dimensions: 6'11" x 8'1"  
Area: 56 sq. ft  
Counted as living area: Yes

Heated: Yes  
Finished: Yes  
Enclosed: Yes  
Contiguous: Yes  
Permitted: Yes  
Wet space: Yes  
Addition: No  
Conversion: No

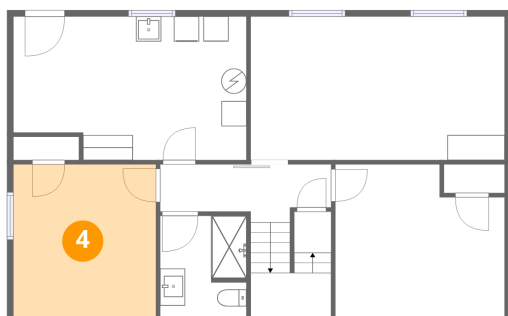
### 3 Floor 1 - Utility



Dimensions: 18'7" x 11'5"  
Area: 213 sq. ft  
Counted as living area: No

Heated: Yes  
Finished: No  
Enclosed: Yes  
Contiguous: Yes  
Permitted: Yes  
Wet space: No  
Addition: No  
Conversion: No

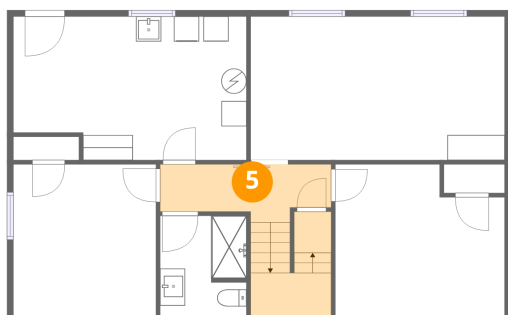
### 4 Floor 1 - Bedroom



Dimensions: 11'5" x 12'2"  
Area: 138 sq. ft  
Counted as living area: Yes

Heated: Yes  
Finished: Yes  
Enclosed: Yes  
Contiguous: Yes  
Permitted: Yes  
Wet space: No  
Addition: No  
Conversion: No

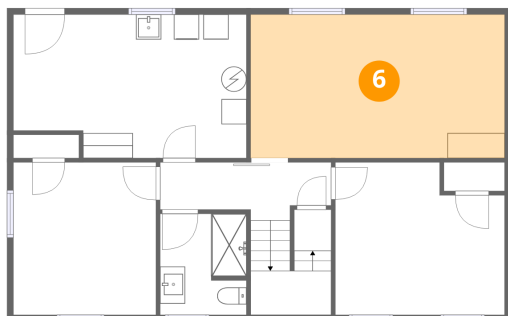
### 5 Floor 1 - Hall



Dimensions: 13'8" x 4'7"  
Area: 63 sq. ft  
Counted as living area: Yes

Heated: Yes  
Finished: Yes  
Enclosed: Yes  
Contiguous: Yes  
Permitted: Yes  
Wet space: No  
Addition: No  
Conversion: No

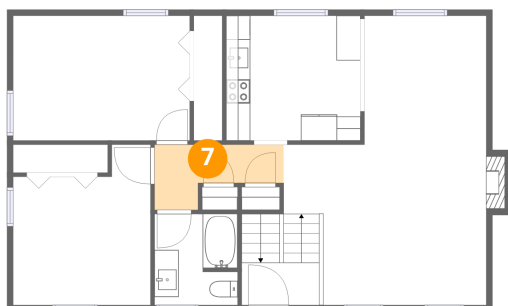
## 6 Floor 1 - Family Room



Dimensions: 20'3" x 11'5"  
Area: 232 sq. ft  
Counted as living area: Yes

Heated: Yes  
Finished: Yes  
Enclosed: Yes  
Contiguous: Yes  
Permitted: Yes  
Wet space: No  
Addition: No  
Conversion: No

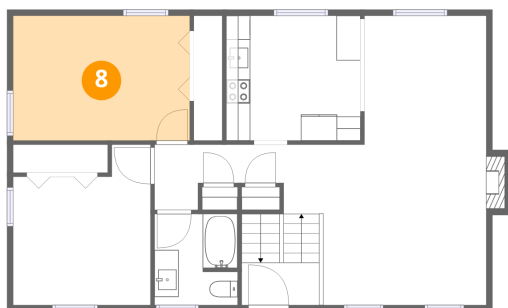
## 7 Floor 2 - Hall



Dimensions: 10'8" x 5'5"  
Area: 58 sq. ft  
Counted as living area: Yes

Heated: Yes  
Finished: Yes  
Enclosed: Yes  
Contiguous: Yes  
Permitted: Yes  
Wet space: No  
Addition: No  
Conversion: No

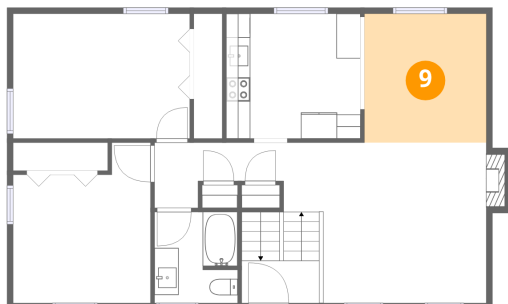
## 8 Floor 2 - Primary Bedroom



Dimensions: 14'8" x 10'4"  
Area: 151 sq. ft  
Counted as living area: Yes

Heated: Yes  
Finished: Yes  
Enclosed: Yes  
Contiguous: Yes  
Permitted: Yes  
Wet space: No  
Addition: No  
Conversion: No

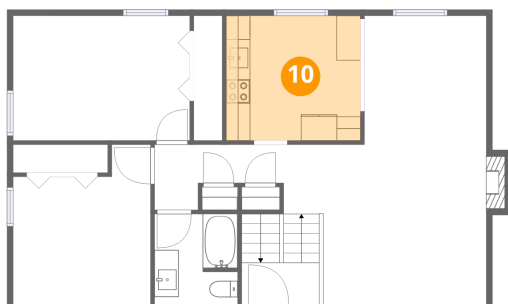
### 9 Floor 2 - Dining Area



Dimensions: 10'1" x 10'8"  
Area: 108 sq. ft  
Counted as living area: Yes

Heated: Yes  
Finished: Yes  
Enclosed: Yes  
Contiguous: Yes  
Permitted: Yes  
Wet space: No  
Addition: No  
Conversion: No

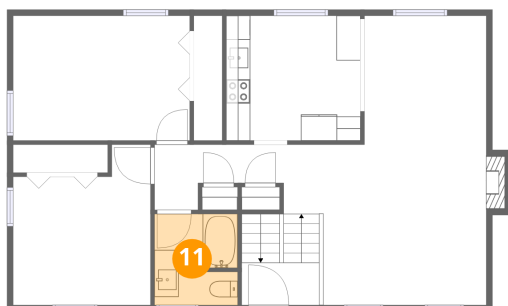
### 10 Floor 2 - Kitchen



Dimensions: 11'1" x 10'4"  
Area: 115 sq. ft  
Counted as living area: Yes

Heated: Yes  
Finished: Yes  
Enclosed: Yes  
Contiguous: Yes  
Permitted: Yes  
Wet space: No  
Addition: No  
Conversion: No

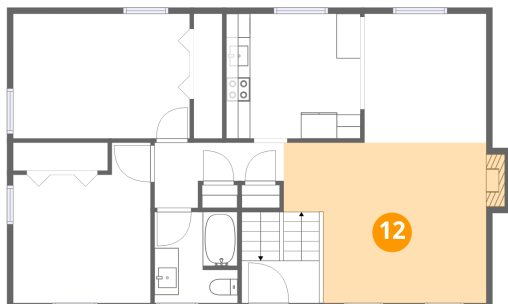
### 11 Floor 2 - Bath



Dimensions: 6'11" x 7'6"  
Area: 52 sq. ft  
Counted as living area: Yes

Heated: Yes  
Finished: Yes  
Enclosed: Yes  
Contiguous: Yes  
Permitted: Yes  
Wet space: Yes  
Addition: No  
Conversion: No

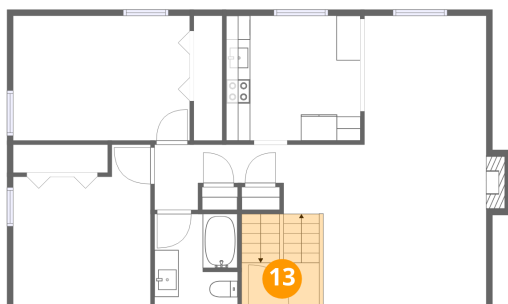
## 12 Floor 2 - Living Room



Dimensions: 16'9" x 13'3"  
Area: 223 sq. ft  
Counted as living area: Yes

Heated: Yes  
Finished: Yes  
Enclosed: Yes  
Contiguous: Yes  
Permitted: Yes  
Wet space: No  
Addition: No  
Conversion: No

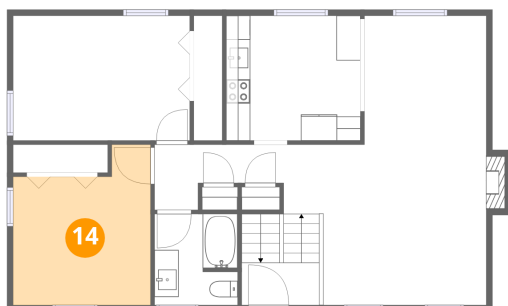
## 13 Floor 2 - Foyer



Dimensions: 6'5" x 3'6"  
Area: 23 sq. ft  
Counted as living area: Yes

Heated: Yes  
Finished: Yes  
Enclosed: Yes  
Contiguous: Yes  
Permitted: Yes  
Wet space: No  
Addition: No  
Conversion: No

## 14 Floor 2 - Bedroom



Dimensions: 11'5" x 13'3"  
Area: 151 sq. ft  
Counted as living area: Yes

Heated: Yes  
Finished: Yes  
Enclosed: Yes  
Contiguous: Yes  
Permitted: Yes  
Wet space: No  
Addition: No  
Conversion: No