

Home data report

520 Cimarron Drive, Ault, Weld County, Colorado, United States, 80610



Total Area: 2025 sq. ft

Below Ground: 0 sq. ft, 1st Floor: 1430 sq. ft, 2nd Floor: 595 sq. ft

Excluded: Basement 1323 sq. ft, Garage 461 sq. ft, Covered patio 264 sq. ft, Porch 72 sq. ft, Open to below 465 sq. ft, Walls: 276 sq. ft

Property summary

 **3** Floors

 **3** Bedrooms

 **2** Bathrooms

Home data report

**520 Cimarron Drive, Ault, Weld County, Colorado, United States,
80610**



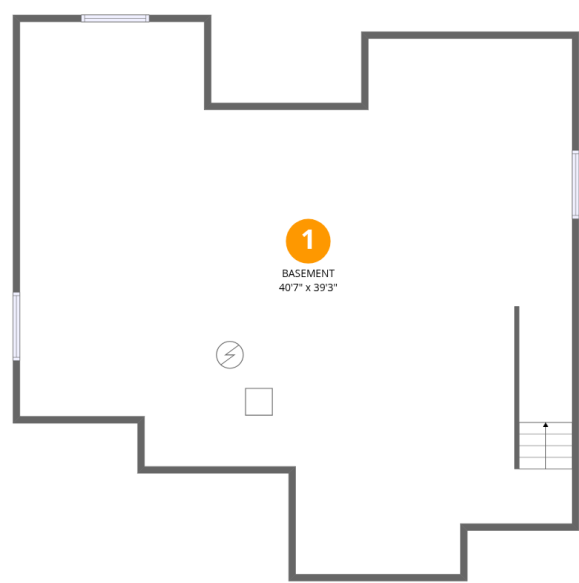
1
Half baths



1
Garages

Home data report

520 Cimarron Drive, Ault, Weld County, Colorado, United States, 80610



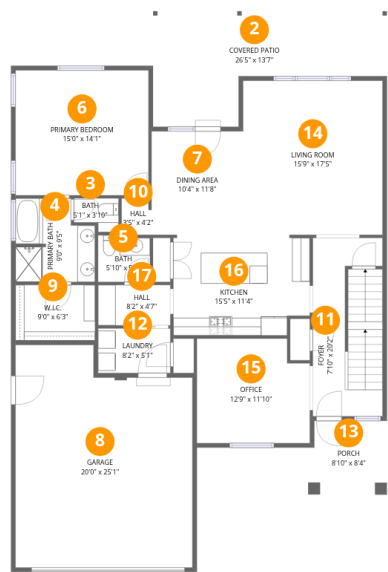
Room dimensions

Floor 1 Below grade Total:0sqft Excluded: 1323sqft

#		Dimensions	sqft	Counted as living area
1	Basement	40'7" x 39'3"	1323 sq. ft	No

Home data report

520 Cimarron Drive, Ault, Weld County, Colorado, United States, 80610



Room dimensions

Floor 2

Total:1430sqft Excluded: 797sqft

#		Dimensions	sqft	Counted as living area
2	Covered Patio	26'5" x 13'7"	264 sq. ft	No
3	Bath	5'1" x 3'10"	16 sq. ft	Yes
4	Primary Bath	9'0" x 9'5"	75 sq. ft	Yes
5	Bath	5'10" x 5'3"	30 sq. ft	Yes
6	Primary Bedroom	15'0" x 14'1"	212 sq. ft	Yes
7	Dining Area	10'4" x 11'8"	121 sq. ft	Yes
8	Garage	20'0" x 25'1"	461 sq. ft	No
9	W.I.C.	9'0" x 6'3"	56 sq. ft	Yes
10	Hall	3'5" x 4'2"	14 sq. ft	Yes
11	Foyer	7'10" x 20'2"	154 sq. ft	Yes
12	Laundry	8'2" x 5'1"	41 sq. ft	Yes

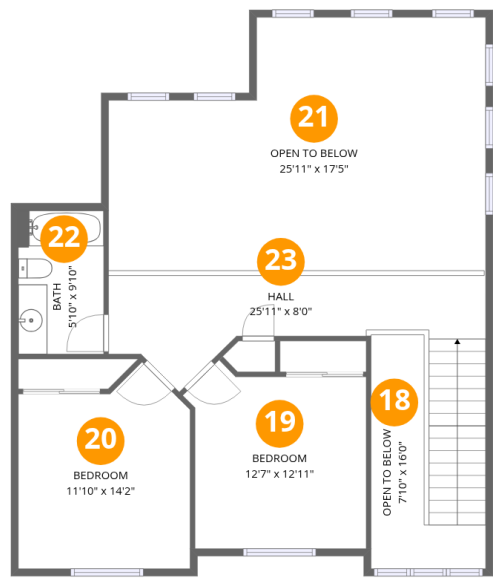
Home data report

**520 Cimarron Drive, Ault, Weld County, Colorado, United States,
80610**

#		Dimensions	sqft	Counted as living area
13	Porch	8'10" x 8'4"	72 sq. ft	No
14	Living Room	15'9" x 17'5"	274 sq. ft	Yes
15	Office	12'9" x 11'10"	143 sq. ft	Yes
16	Kitchen	15'5" x 11'4"	168 sq. ft	Yes
17	Hall	8'2" x 4'7"	37 sq. ft	Yes

Home data report

520 Cimarron Drive, Ault, Weld County, Colorado, United States, 80610

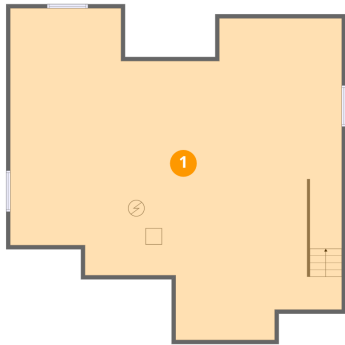


Room dimensions

Floor 3 Total:595sqft Excluded: 465sqft

#		Dimensions	sqft	Counted as living area
18	Open To Below	7'10" x 16'0"	71 sq. ft	No
19	Bedroom	12'7" x 12'11"	141 sq. ft	Yes
20	Bedroom	11'10" x 14'2"	146 sq. ft	Yes
21	Open To Below	25'11" x 17'5"	393 sq. ft	No
22	Bath	5'10" x 9'10"	58 sq. ft	Yes
23	Hall	25'11" x 8'0"	188 sq. ft	Yes

1 Floor 1 - Basement



Dimensions: 40'7" x 39'3"
Area: 1323 sq. ft
Counted as living area: No

Heated: Yes
Finished: No
Enclosed: Yes
Contiguous: Yes
Permitted: Yes
Wet space: No
Addition: No
Conversion: No

2 Floor 2 - Covered Patio



Dimensions: 26'5" x 13'7"
Area: 264 sq. ft
Counted as living area: No

Heated: No
Finished: No
Enclosed: No
Contiguous: Yes
Permitted: Yes
Wet space: No
Addition: No
Conversion: No

3 Floor 2 - Bath



Dimensions: 5'1" x 3'10"
Area: 16 sq. ft
Counted as living area: Yes

Heated: Yes
Finished: Yes
Enclosed: Yes
Contiguous: Yes
Permitted: Yes
Wet space: No
Addition: No
Conversion: No

4 Floor 2 - Primary Bath



Dimensions: 9'0" x 9'5"
Area: 75 sq. ft
Counted as living area: Yes

Heated: Yes
Finished: Yes
Enclosed: Yes
Contiguous: Yes
Permitted: Yes
Wet space: Yes
Addition: No
Conversion: No

5 Floor 2 - Bath



Dimensions: 5'10" x 5'3"
Area: 30 sq. ft
Counted as living area: Yes

Heated: Yes
Finished: Yes
Enclosed: Yes
Contiguous: Yes
Permitted: Yes
Wet space: Yes
Addition: No
Conversion: No

6 Floor 2 - Primary Bedroom



Dimensions: 15'0" x 14'1"
Area: 212 sq. ft
Counted as living area: Yes

Heated: Yes
Finished: Yes
Enclosed: Yes
Contiguous: Yes
Permitted: Yes
Wet space: No
Addition: No
Conversion: No

7 Floor 2 - Dining Area



Dimensions: 10'4" x 11'8"
Area: 121 sq. ft
Counted as living area: Yes

Heated: Yes
Finished: Yes
Enclosed: Yes
Contiguous: Yes
Permitted: Yes
Wet space: No
Addition: No
Conversion: No

8 Floor 2 - Garage



Dimensions: 20'0" x 25'1"
Area: 461 sq. ft
Counted as living area: No

Heated: No
Finished: No
Enclosed: Yes
Contiguous: Yes
Permitted: Yes
Wet space: No
Addition: No
Conversion: No

520 Cimarron Drive, Ault, Weld County, Colorado, United States, 80610

9 Floor 2 - W.I.C.



Dimensions: 9'0" x 6'3"
Area: 56 sq. ft
Counted as living area: Yes

Heated: Yes
Finished: Yes
Enclosed: Yes
Contiguous: Yes
Permitted: Yes
Wet space: No
Addition: No
Conversion: No

10 Floor 2 - Hall



Dimensions: 3'5" x 4'2"
Area: 14 sq. ft
Counted as living area: Yes

Heated: Yes
Finished: Yes
Enclosed: Yes
Contiguous: Yes
Permitted: Yes
Wet space: No
Addition: No
Conversion: No

11 Floor 2 - Foyer



Dimensions: 7'10" x 20'2"
Area: 154 sq. ft
Counted as living area: Yes

Heated: Yes
Finished: Yes
Enclosed: Yes
Contiguous: Yes
Permitted: Yes
Wet space: No
Addition: No
Conversion: No

12 Floor 2 - Laundry



Dimensions: 8'2" x 5'1"
Area: 41 sq. ft
Counted as living area: Yes

Heated: Yes
Finished: Yes
Enclosed: Yes
Contiguous: Yes
Permitted: Yes
Wet space: No
Addition: No
Conversion: No

13 Floor 2 - Porch



Dimensions: 8'10" x 8'4"
Area: 72 sq. ft
Counted as living area: No

Heated: No
Finished: No
Enclosed: No
Contiguous: Yes
Permitted: Yes
Wet space: No
Addition: No
Conversion: No

14 Floor 2 - Living Room



Dimensions: 15'9" x 17'5"
Area: 274 sq. ft
Counted as living area: Yes

Heated: Yes
Finished: Yes
Enclosed: Yes
Contiguous: Yes
Permitted: Yes
Wet space: No
Addition: No
Conversion: No

520 Cimarron Drive, Ault, Weld County, Colorado, United States, 80610

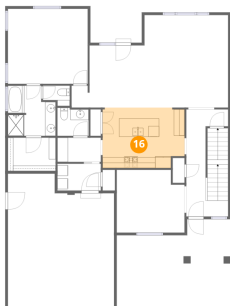
15 Floor 2 - Office



Dimensions: 12'9" x 11'10"
Area: 143 sq. ft
Counted as living area: Yes

Heated: Yes
Finished: Yes
Enclosed: Yes
Contiguous: Yes
Permitted: Yes
Wet space: No
Addition: No
Conversion: No

16 Floor 2 - Kitchen



Dimensions: 15'5" x 11'4"
Area: 168 sq. ft
Counted as living area: Yes

Heated: Yes
Finished: Yes
Enclosed: Yes
Contiguous: Yes
Permitted: Yes
Wet space: No
Addition: No
Conversion: No

17 Floor 2 - Hall

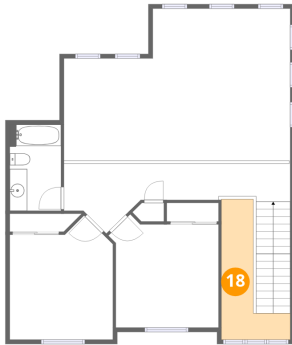


Dimensions: 8'2" x 4'7"
Area: 37 sq. ft
Counted as living area: Yes

Heated: Yes
Finished: Yes
Enclosed: Yes
Contiguous: Yes
Permitted: Yes
Wet space: No
Addition: No
Conversion: No

520 Cimarron Drive, Ault, Weld County, Colorado, United States, 80610

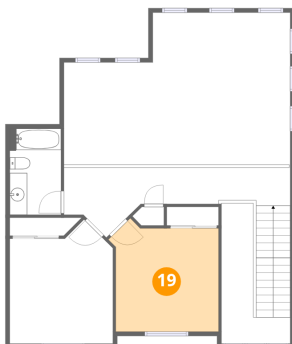
18 Floor 3 - Open To Below



Dimensions: 7'10" x 16'0"
Area: 71 sq. ft
Counted as living area: No

Heated: No
Finished: No
Enclosed: No
Contiguous: Yes
Permitted: No
Wet space: No
Addition: No
Conversion: No

19 Floor 3 - Bedroom



Dimensions: 12'7" x 12'11"
Area: 141 sq. ft
Counted as living area: Yes

Heated: Yes
Finished: Yes
Enclosed: Yes
Contiguous: Yes
Permitted: Yes
Wet space: No
Addition: No
Conversion: No

20 Floor 3 - Bedroom



Dimensions: 11'10" x 14'2"
Area: 146 sq. ft
Counted as living area: Yes

Heated: Yes
Finished: Yes
Enclosed: Yes
Contiguous: Yes
Permitted: Yes
Wet space: No
Addition: No
Conversion: No

520 Cimarron Drive, Ault, Weld County, Colorado, United States, 80610

21 Floor 3 - Open To Below



Dimensions: 25'11" x 17'5"
Area: 393 sq. ft
Counted as living area: No

Heated: No
Finished: No
Enclosed: No
Contiguous: Yes
Permitted: No
Wet space: No
Addition: No
Conversion: No

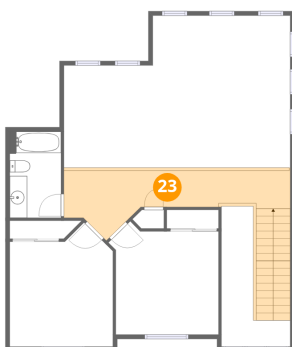
22 Floor 3 - Bath



Dimensions: 5'10" x 9'10"
Area: 58 sq. ft
Counted as living area: Yes

Heated: Yes
Finished: Yes
Enclosed: Yes
Contiguous: Yes
Permitted: Yes
Wet space: Yes
Addition: No
Conversion: No

23 Floor 3 - Hall



Dimensions: 25'11" x 8'0"
Area: 188 sq. ft
Counted as living area: Yes

Heated: Yes
Finished: Yes
Enclosed: Yes
Contiguous: Yes
Permitted: Yes
Wet space: No
Addition: No
Conversion: No