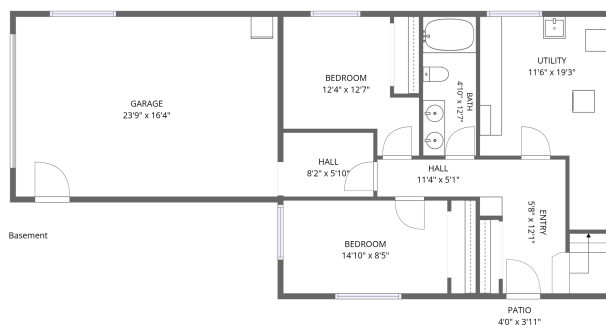
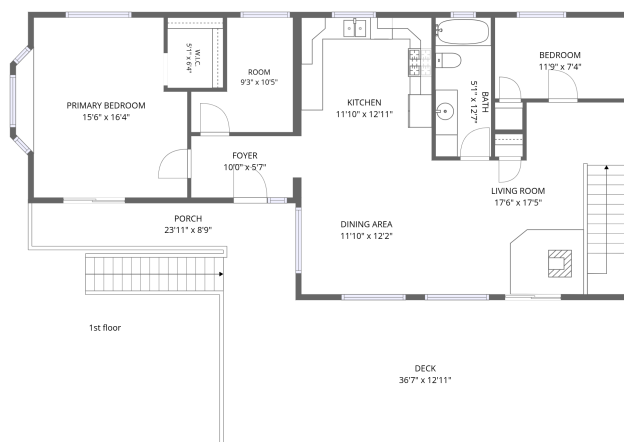




19010 Upper Fish Hatchery Drive, Eagle River, Anchorage Borough, Alaska, United States, 99577



Total Area: 1877 sq. ft

Basement: 735 sq. ft, 1st Floor: 1142 sq. ft

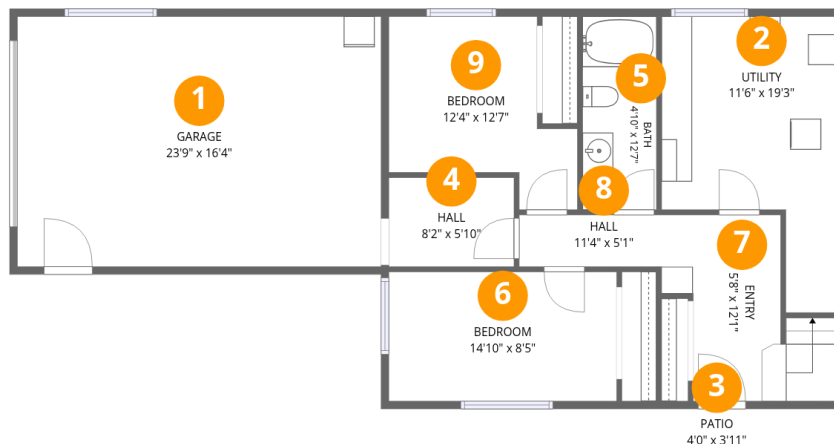
Excluded: Garage 386 sq. ft, Patio 16 sq. ft, Deck 473 sq. ft, Porch 162 sq. ft, Walls: 168 sq. ft

Property summary





19010 Upper Fish Hatchery Drive, Eagle River, Anchorage Borough, Alaska, United States, 99577



Room dimensions

Floor 1 Below grade

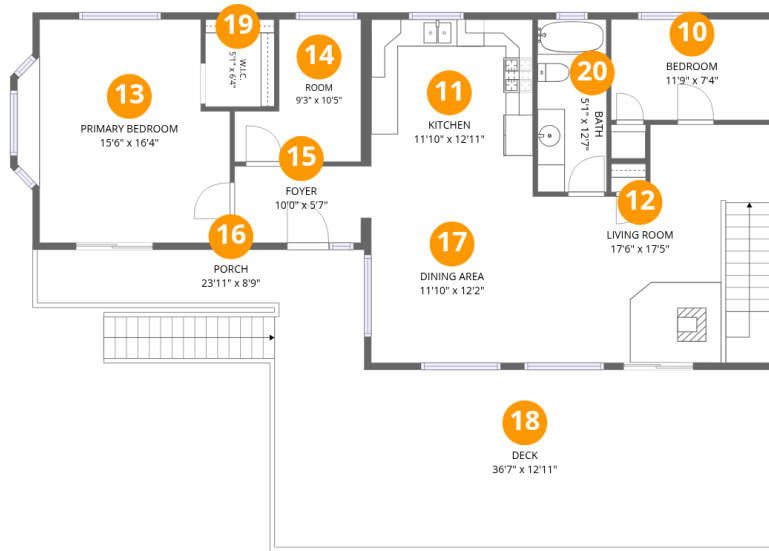
Total:735sqft

Excluded: 402sqft

#		Dimensions	sqft	Counted as living area
1	Garage	23'9" x 16'4"	386 sq. ft	No
2	Utility	11'6" x 19'3"	168 sq. ft	Yes
3	Patio	4'0" x 3'11"	16 sq. ft	No
4	Hall	8'2" x 5'10"	47 sq. ft	Yes
5	Bath	4'10" x 12'7"	61 sq. ft	Yes
6	Bedroom	14'10" x 8'5"	125 sq. ft	Yes
7	Entry	5'8" x 12'1"	89 sq. ft	Yes
8	Hall	11'4" x 5'1"	42 sq. ft	Yes
9	Bedroom	12'4" x 12'7"	115 sq. ft	Yes



**19010 Upper Fish Hatchery Drive, Eagle River,
Anchorage Borough, Alaska, United States, 99577**



Room dimensions

Floor 2

Total:1142sqft

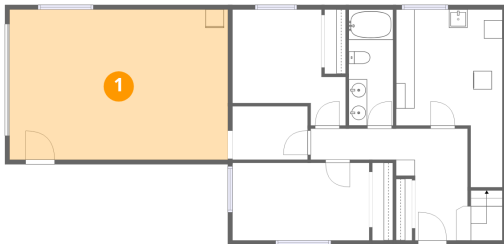
Excluded: 635sqft

#		Dimensions	sqft	Counted as living area
10	Bedroom	11'9" x 7'4"	87 sq. ft	Yes
11	Kitchen	11'10" x 12'11"	153 sq. ft	Yes
12	Living Room	17'6" x 17'5"	260 sq. ft	Yes
13	Primary Bedroom	15'6" x 16'4"	225 sq. ft	Yes
14	Room	9'3" x 10'5"	74 sq. ft	Yes
15	Foyer	10'0" x 5'7"	54 sq. ft	Yes
16	Porch	23'11" x 8'9"	162 sq. ft	No
17	Dining Area	11'10" x 12'2"	143 sq. ft	Yes
18	Deck	36'7" x 12'11"	473 sq. ft	No
19	W.I.C.	5'1" x 6'4"	32 sq. ft	Yes
20	Bath	5'1" x 12'7"	64 sq. ft	Yes



19010 Upper Fish Hatchery Drive, Eagle River, Anchorage Borough, Alaska, United States, 99577

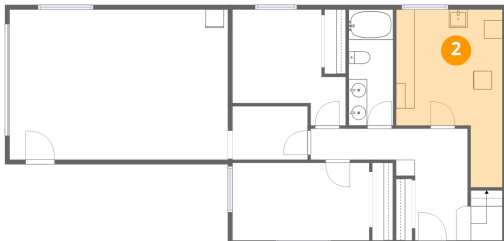
1 Floor 1 - Garage



Dimensions: 23'9" x 16'4"
Area: 386 sq. ft
Counted as living area: No

Heated: No
Finished: No
Enclosed: Yes
Contiguous: Yes
Permitted: Yes
Wet space: No
Addition: No
Conversion: No

2 Floor 1 - Utility



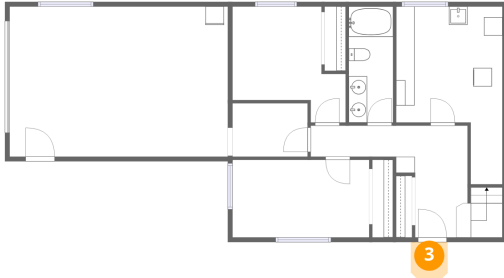
Dimensions: 11'6" x 19'3"
Area: 168 sq. ft
Counted as living area: Yes

Heated: Yes
Finished: Yes
Enclosed: Yes
Contiguous: Yes
Permitted: Yes
Wet space: No
Addition: No
Conversion: No



19010 Upper Fish Hatchery Drive, Eagle River,
Anchorage Borough, Alaska, United States, 99577

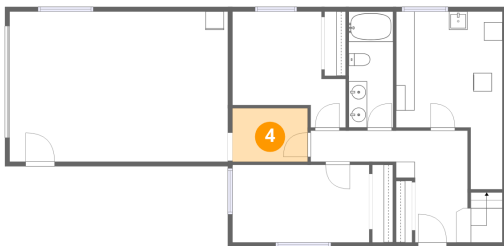
3 Floor 1 - Patio



Dimensions: 4'0" x 3'11"
Area: 16 sq. ft
Counted as living area: No

Heated: No
Finished: No
Enclosed: No
Contiguous: Yes
Permitted: Yes
Wet space: No
Addition: No
Conversion: No

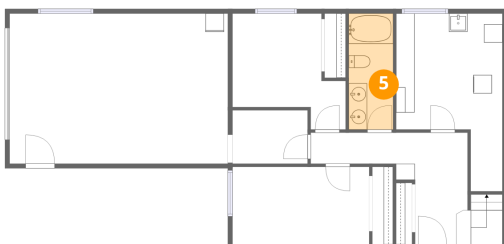
4 Floor 1 - Hall



Dimensions: 8'2" x 5'10"
Area: 47 sq. ft
Counted as living area: Yes

Heated: Yes
Finished: Yes
Enclosed: Yes
Contiguous: Yes
Permitted: Yes
Wet space: No
Addition: No
Conversion: No

5 Floor 1 - Bath



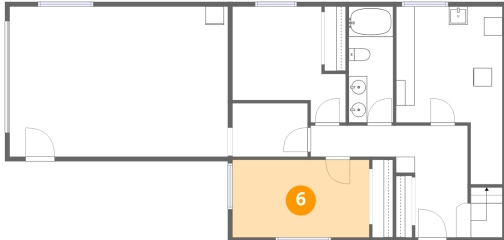
Dimensions: 4'10" x 12'7"
Area: 61 sq. ft
Counted as living area: Yes

Heated: Yes
Finished: Yes
Enclosed: Yes
Contiguous: Yes
Permitted: Yes
Wet space: Yes
Addition: No
Conversion: No



19010 Upper Fish Hatchery Drive, Eagle River,
Anchorage Borough, Alaska, United States, 99577

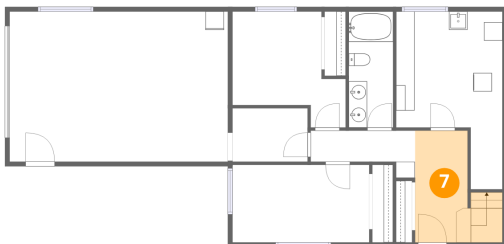
6 Floor 1 - Bedroom



Dimensions: 14'10" x 8'5"
Area: 125 sq. ft
Counted as living area: Yes

Heated: Yes
Finished: Yes
Enclosed: Yes
Contiguous: Yes
Permitted: Yes
Wet space: No
Addition: No
Conversion: No

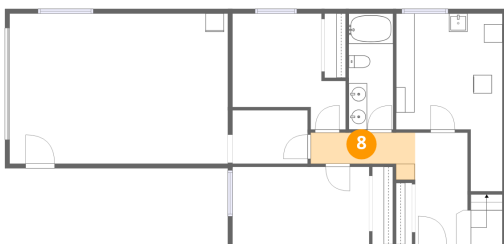
7 Floor 1 - Entry



Dimensions: 5'8" x 12'1"
Area: 89 sq. ft
Counted as living area: Yes

Heated: Yes
Finished: Yes
Enclosed: Yes
Contiguous: Yes
Permitted: Yes
Wet space: No
Addition: No
Conversion: No

8 Floor 1 - Hall



Dimensions: 11'4" x 5'1"
Area: 42 sq. ft
Counted as living area: Yes

Heated: Yes
Finished: Yes
Enclosed: Yes
Contiguous: Yes
Permitted: Yes
Wet space: No
Addition: No
Conversion: No



19010 Upper Fish Hatchery Drive, Eagle River,
Anchorage Borough, Alaska, United States, 99577

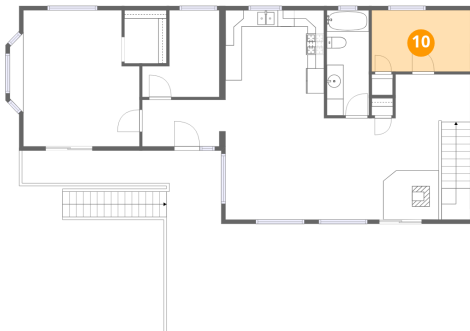
9 Floor 1 - Bedroom



Dimensions: 12'4" x 12'7"
Area: 115 sq. ft
Counted as living area: Yes

Heated: Yes
Finished: Yes
Enclosed: Yes
Contiguous: Yes
Permitted: Yes
Wet space: No
Addition: No
Conversion: No

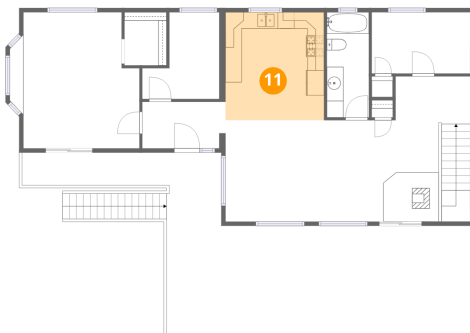
10 Floor 2 - Bedroom



Dimensions: 11'9" x 7'4"
Area: 87 sq. ft
Counted as living area: Yes

Heated: Yes
Finished: Yes
Enclosed: Yes
Contiguous: Yes
Permitted: Yes
Wet space: No
Addition: No
Conversion: No

11 Floor 2 - Kitchen

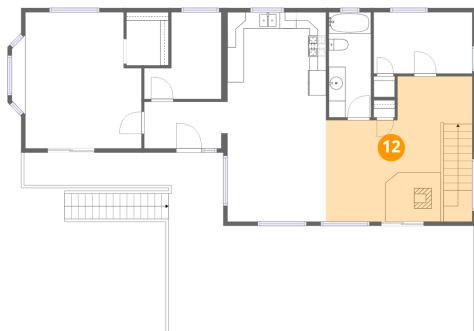


Dimensions: 11'10" x 12'11"
Area: 153 sq. ft
Counted as living area: Yes

Heated: Yes
Finished: Yes
Enclosed: Yes
Contiguous: Yes
Permitted: Yes
Wet space: No
Addition: No
Conversion: No



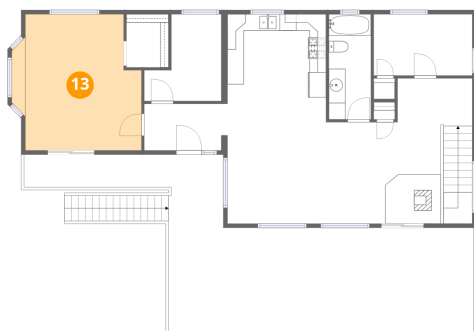
12 Floor 2 - Living Room



Dimensions: 17'6" x 17'5"
Area: 260 sq. ft
Counted as living area: Yes

Heated: Yes
Finished: Yes
Enclosed: Yes
Contiguous: Yes
Permitted: Yes
Wet space: No
Addition: No
Conversion: No

13 Floor 2 - Primary Bedroom



Dimensions: 15'6" x 16'4"
Area: 225 sq. ft
Counted as living area: Yes

Heated: Yes
Finished: Yes
Enclosed: Yes
Contiguous: Yes
Permitted: Yes
Wet space: No
Addition: No
Conversion: No

14 Floor 2 - Room

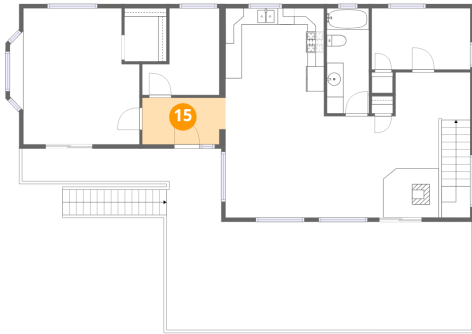


Dimensions: 9'3" x 10'5"
Area: 74 sq. ft
Counted as living area: Yes

Heated: Yes
Finished: Yes
Enclosed: Yes
Contiguous: Yes
Permitted: Yes
Wet space: No
Addition: No
Conversion: No



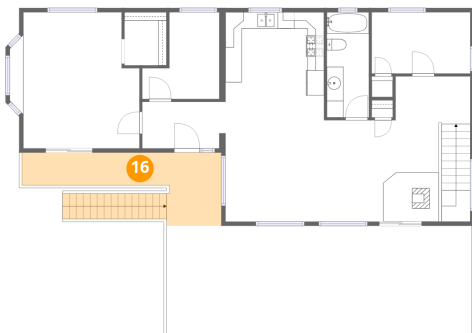
15 Floor 2 - Foyer



Dimensions: 10'0" x 5'7"
Area: 54 sq. ft
Counted as living area: Yes

Heated: Yes
Finished: Yes
Enclosed: Yes
Contiguous: Yes
Permitted: Yes
Wet space: No
Addition: No
Conversion: No

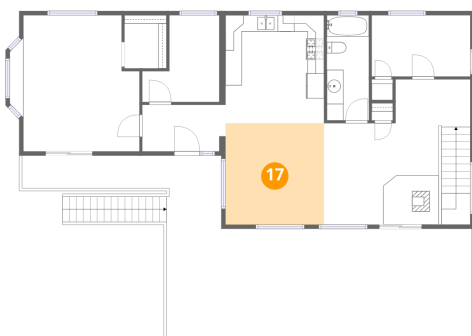
16 Floor 2 - Porch



Dimensions: 23'11" x 8'9"
Area: 162 sq. ft
Counted as living area: No

Heated: No
Finished: No
Enclosed: No
Contiguous: Yes
Permitted: Yes
Wet space: No
Addition: No
Conversion: No

17 Floor 2 - Dining Area

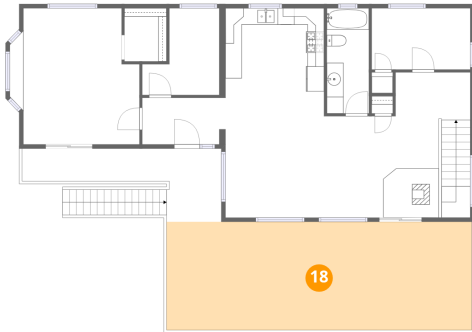


Dimensions: 11'10" x 12'2"
Area: 143 sq. ft
Counted as living area: Yes

Heated: Yes
Finished: Yes
Enclosed: Yes
Contiguous: Yes
Permitted: Yes
Wet space: No
Addition: No
Conversion: No



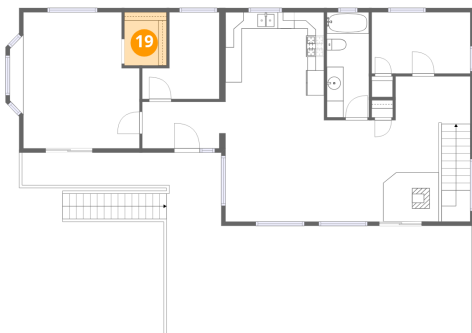
18 Floor 2 - Deck



Dimensions: 36'7" x 12'11"
Area: 473 sq. ft
Counted as living area: No

Heated: No
Finished: No
Enclosed: No
Contiguous: Yes
Permitted: Yes
Wet space: No
Addition: No
Conversion: No

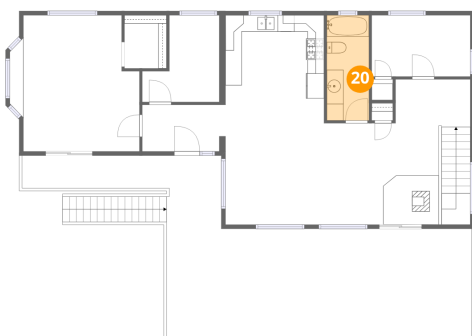
19 Floor 2 - W.I.C.



Dimensions: 5'1" x 6'4"
Area: 32 sq. ft
Counted as living area: Yes

Heated: Yes
Finished: Yes
Enclosed: Yes
Contiguous: Yes
Permitted: Yes
Wet space: No
Addition: No
Conversion: No

20 Floor 2 - Bath



Dimensions: 5'1" x 12'7"
Area: 64 sq. ft
Counted as living area: Yes

Heated: Yes
Finished: Yes
Enclosed: Yes
Contiguous: Yes
Permitted: Yes
Wet space: Yes
Addition: No
Conversion: No