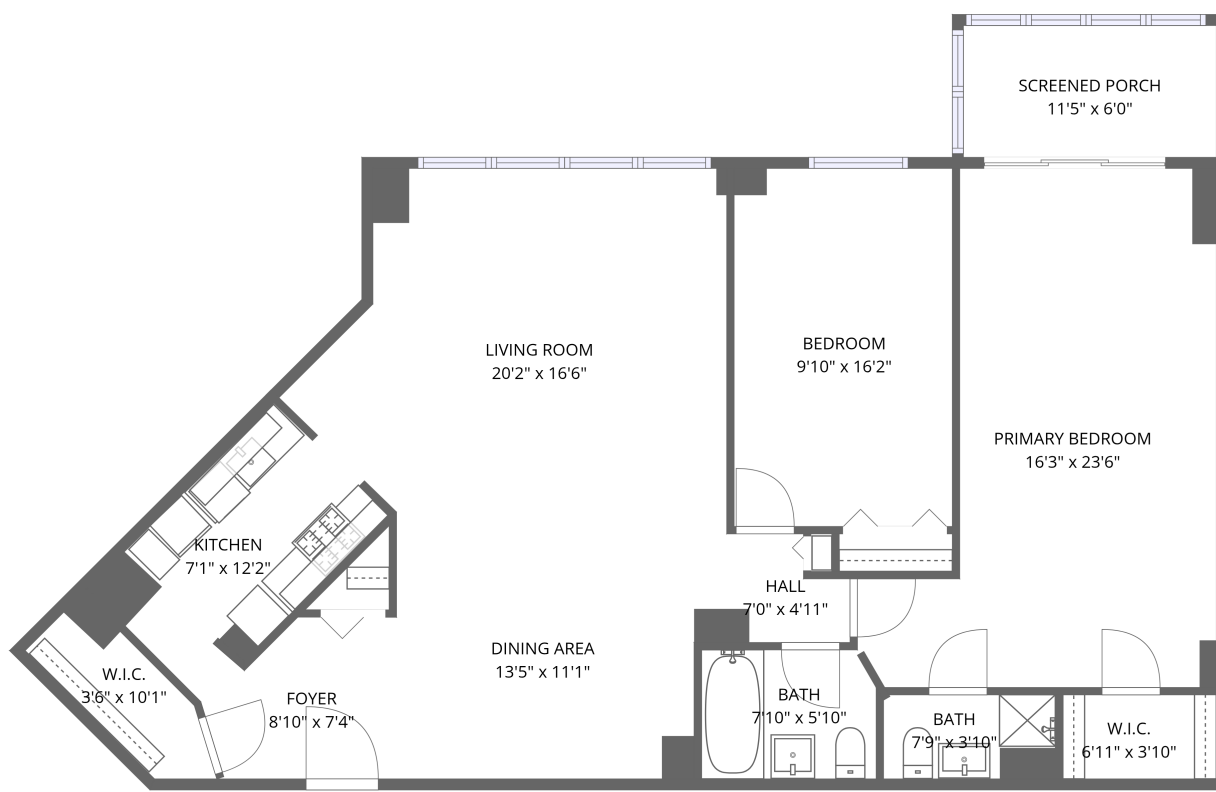


Home data report

530 Valley Road, Upper Montclair, Montclair, Essex County, New Jersey, United States, 07043, 3Z



1st floor

Total Area: 1251 sq. ft

1st Floor: 1251 sq. ft

Excluded: Screened porch 68 sq. ft, Walls: 0 sq. ft

Property summary

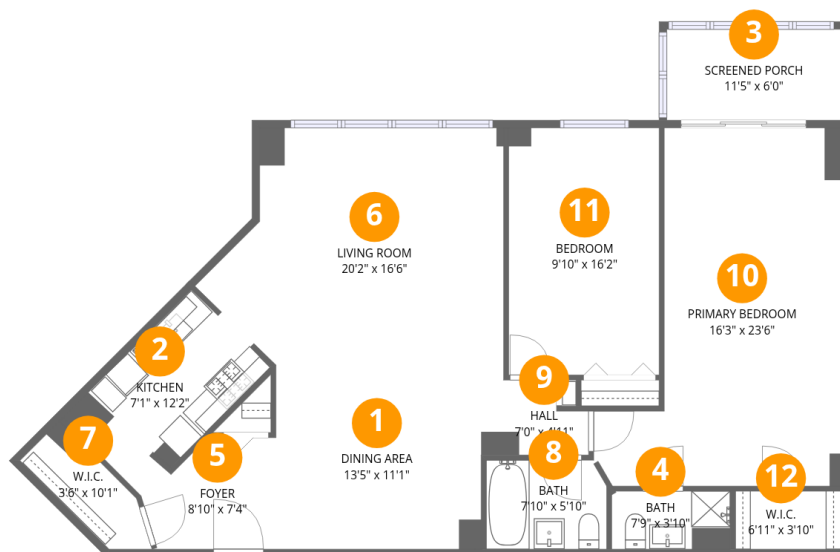
 **1** Floors

 **2** Bedrooms

 **2** Bathrooms

Home data report

530 Valley Road, Upper Montclair, Montclair, Essex County, New Jersey, United States, 07043, 3Z



Room dimensions

Floor 1

Total:1251sqft Excluded: 68sqft

#		Dimensions	sqft	Counted as living area
1	Dining Area	13'5" x 11'1"	148 sq. ft	Yes
2	Kitchen	7'1" x 12'2"	87 sq. ft	Yes
3	Screened Porch	11'5" x 6'0"	68 sq. ft	No
4	Bath	7'9" x 3'10"	30 sq. ft	Yes
5	Foyer	8'10" x 7'4"	64 sq. ft	Yes
6	Living Room	20'2" x 16'6"	334 sq. ft	Yes
7	W.I.C.	3'6" x 10'1"	35 sq. ft	Yes
8	Bath	7'10" x 5'10"	46 sq. ft	Yes
9	Hall	7'0" x 4'11"	35 sq. ft	Yes
10	Primary Bedroom	16'3" x 23'6"	381 sq. ft	Yes
11	Bedroom	9'10" x 16'2"	159 sq. ft	Yes

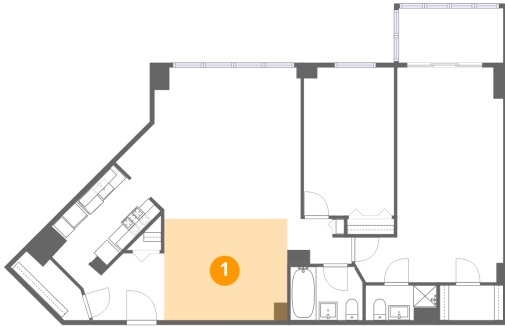
Home data report

530 Valley Road, Upper Montclair, Montclair, Essex County, New Jersey, United States, 07043, 3Z

#		Dimensions	sqft	Counted as living area
12	W.I.C.	6'11" x 3'10"	26 sq. ft	Yes

530 Valley Road, Upper Montclair, Montclair, Essex County, New Jersey, United States, 07043, 3Z

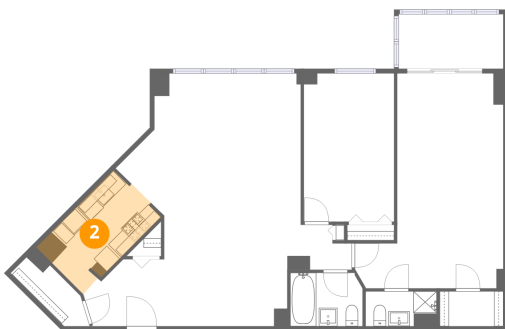
1 Floor 1 - Dining Area



Dimensions: 13'5" x 11'1"
Area: 148 sq. ft
Counted as living area: Yes

Heated: Yes
Finished: Yes
Enclosed: Yes
Contiguous: Yes
Permitted: Yes
Wet space: No
Addition: No
Conversion: No

2 Floor 1 - Kitchen

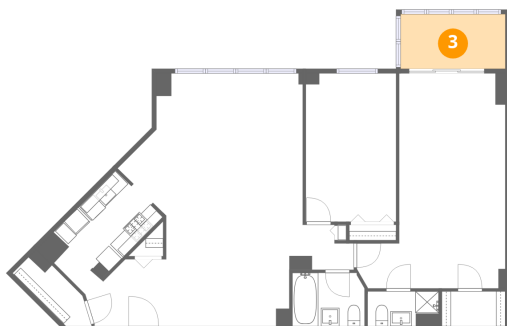


Dimensions: 7'1" x 12'2"
Area: 87 sq. ft
Counted as living area: Yes

Heated: Yes
Finished: Yes
Enclosed: Yes
Contiguous: Yes
Permitted: Yes
Wet space: No
Addition: No
Conversion: No

530 Valley Road, Upper Montclair, Montclair, Essex County, New Jersey, United States, 07043, 3Z

3 Floor 1 - Screened Porch



Dimensions: 11'5" x 6'0"
Area: 68 sq. ft
Counted as living area: No

Heated: No
Finished: No
Enclosed: No
Contiguous: Yes
Permitted: Yes
Wet space: No
Addition: No
Conversion: No

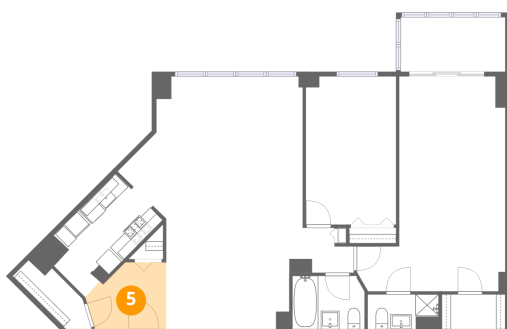
4 Floor 1 - Bath



Dimensions: 7'9" x 3'10"
Area: 30 sq. ft
Counted as living area: Yes

Heated: Yes
Finished: Yes
Enclosed: Yes
Contiguous: Yes
Permitted: Yes
Wet space: Yes
Addition: No
Conversion: No

5 Floor 1 - Foyer

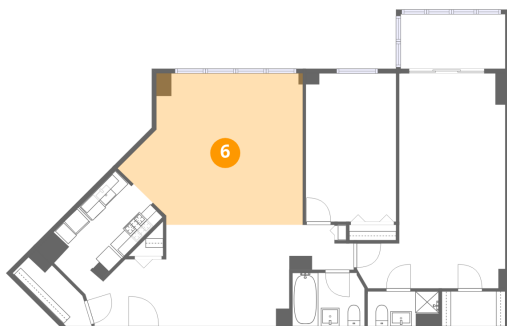


Dimensions: 8'10" x 7'4"
Area: 64 sq. ft
Counted as living area: Yes

Heated: Yes
Finished: Yes
Enclosed: Yes
Contiguous: Yes
Permitted: Yes
Wet space: No
Addition: No
Conversion: No

530 Valley Road, Upper Montclair, Montclair, Essex County, New Jersey, United States, 07043, 3Z

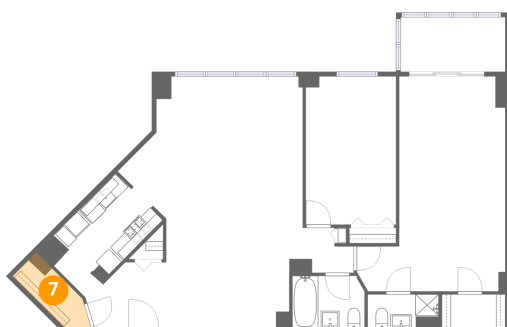
6 Floor 1 - Living Room



Dimensions: 20'2" x 16'6"
Area: 334 sq. ft
Counted as living area: Yes

Heated: Yes
Finished: Yes
Enclosed: Yes
Contiguous: Yes
Permitted: Yes
Wet space: No
Addition: No
Conversion: No

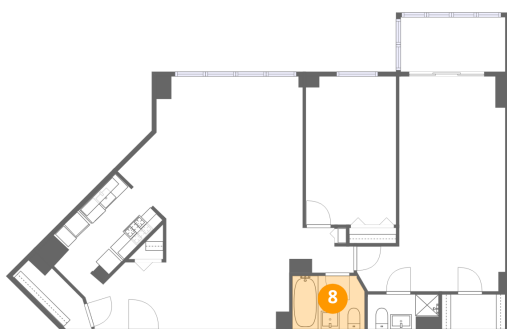
7 Floor 1 - W.I.C.



Dimensions: 3'6" x 10'1"
Area: 35 sq. ft
Counted as living area: Yes

Heated: Yes
Finished: Yes
Enclosed: Yes
Contiguous: Yes
Permitted: Yes
Wet space: No
Addition: No
Conversion: No

8 Floor 1 - Bath



Dimensions: 7'10" x 5'10"
Area: 46 sq. ft
Counted as living area: Yes

Heated: Yes
Finished: Yes
Enclosed: Yes
Contiguous: Yes
Permitted: Yes
Wet space: Yes
Addition: No
Conversion: No

530 Valley Road, Upper Montclair, Montclair, Essex County, New Jersey, United States, 07043, 3Z

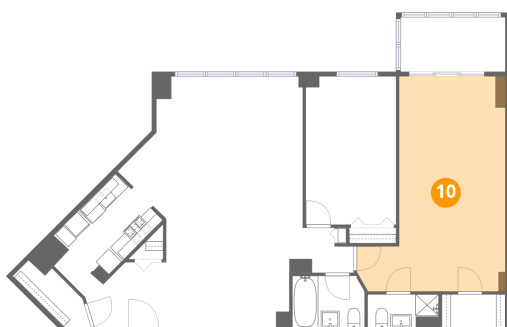
9 Floor 1 - Hall



Dimensions: 7'0" x 4'11"
Area: 35 sq. ft
Counted as living area: Yes

Heated: Yes
Finished: Yes
Enclosed: Yes
Contiguous: Yes
Permitted: Yes
Wet space: No
Addition: No
Conversion: No

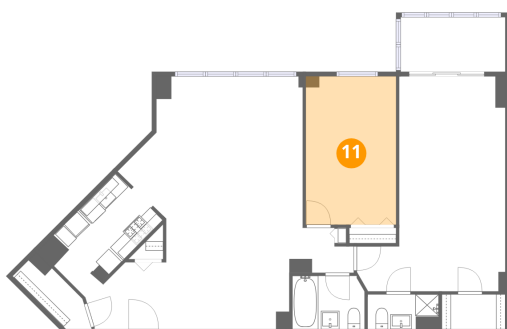
10 Floor 1 - Primary Bedroom



Dimensions: 16'3" x 23'6"
Area: 381 sq. ft
Counted as living area: Yes

Heated: Yes
Finished: Yes
Enclosed: Yes
Contiguous: Yes
Permitted: Yes
Wet space: No
Addition: No
Conversion: No

11 Floor 1 - Bedroom

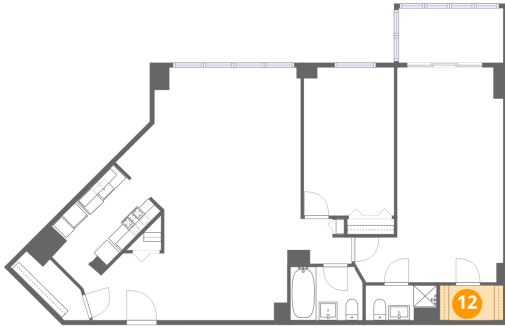


Dimensions: 9'10" x 16'2"
Area: 159 sq. ft
Counted as living area: Yes

Heated: Yes
Finished: Yes
Enclosed: Yes
Contiguous: Yes
Permitted: Yes
Wet space: No
Addition: No
Conversion: No

530 Valley Road, Upper Montclair, Montclair, Essex County, New Jersey, United States, 07043, 3Z

12 Floor 1 - W.I.C.



Dimensions: 6'11" x 3'10"
Area: 26 sq. ft
Counted as living area: Yes

Heated: Yes
Finished: Yes
Enclosed: Yes
Contiguous: Yes
Permitted: Yes
Wet space: No
Addition: No
Conversion: No