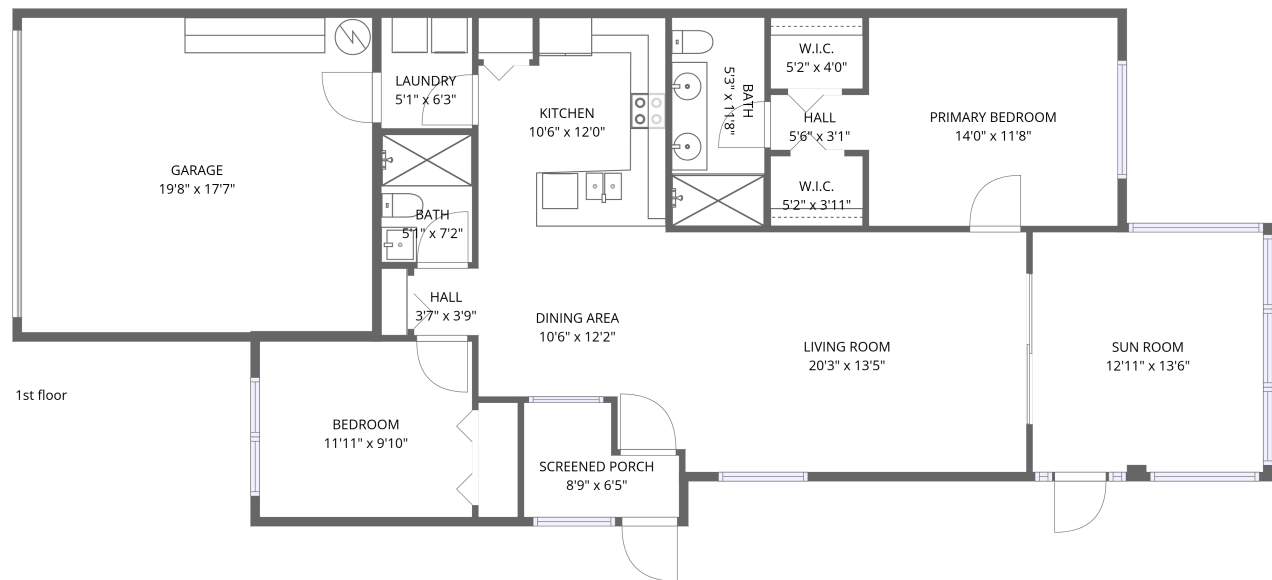


Home data report

11723 Foxworth Lane, Summertree, New Port Richey, Pasco County, Florida, United States, 34654



Total Area: 1223 sq. ft

1st Floor: 1223 sq. ft


Excluded: Screened porch 45 sq. ft, Garage 348 sq. ft, Walls: 117 sq. ft

Property summary

 **1** Floors

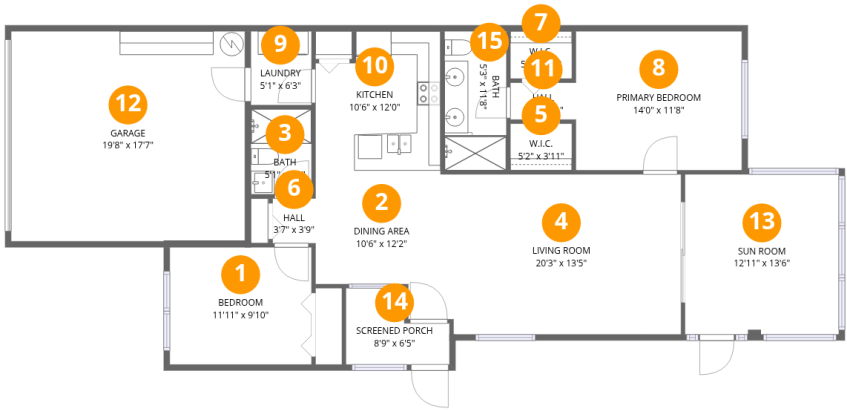
 **2** Bedrooms

 **2** Bathrooms

 **1** Garages

Home data report

11723 Foxworth Lane, Summertree, New Port Richey, Pasco
County, Florida, United States, 34654



Room dimensions

Floor 1 Total:1223sqft Excluded: 393sqft

#		Dimensions	sqft	Counted as living area
1	Bedroom	11'11" x 9'10"	118 sq. ft	Yes
2	Dining Area	10'6" x 12'2"	105 sq. ft	Yes
3	Bath	5'1" x 7'2"	37 sq. ft	Yes
4	Living Room	20'3" x 13'5"	271 sq. ft	Yes
5	W.I.C.	5'2" x 3'11"	20 sq. ft	Yes
6	Hall	3'7" x 3'9"	14 sq. ft	Yes
7	W.I.C.	5'2" x 4'0"	21 sq. ft	Yes
8	Primary Bedroom	14'0" x 11'8"	164 sq. ft	Yes
9	Laundry	5'1" x 6'3"	32 sq. ft	Yes
10	Kitchen	10'6" x 12'0"	118 sq. ft	Yes
11	Hall	5'6" x 3'1"	17 sq. ft	Yes

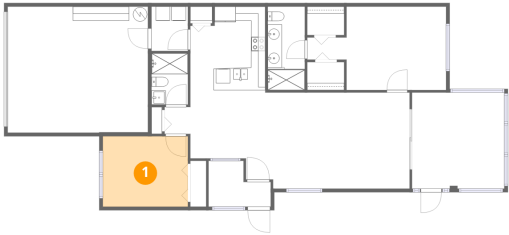
Home data report

11723 Foxworth Lane, Summertree, New Port Richey, Pasco
County, Florida, United States, 34654

#		Dimensions	sqft	Counted as living area
12	Garage	19'8" x 17'7"	348 sq. ft	No
13	Sun Room	12'11" x 13'6"	175 sq. ft	Yes
14	Screened Porch	8'9" x 6'5"	45 sq. ft	No
15	Bath	5'3" x 11'8"	61 sq. ft	Yes

11723 Foxworth Lane, Summertree, New Port Richey, Pasco
County, Florida, United States, 34654

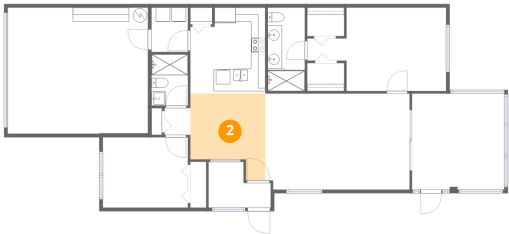
1 Floor 1 - Bedroom



Dimensions: 11'11" x 9'10"
Area: 118 sq. ft
Counted as living area: Yes

Heated: Yes
Finished: Yes
Enclosed: Yes
Contiguous: Yes
Permitted: Yes
Wet space: No
Addition: No
Conversion: No

2 Floor 1 - Dining Area



Dimensions: 10'6" x 12'2"
Area: 105 sq. ft
Counted as living area: Yes

Heated: Yes
Finished: Yes
Enclosed: Yes
Contiguous: Yes
Permitted: Yes
Wet space: No
Addition: No
Conversion: No

Home data report

11723 Foxworth Lane, Summertree, New Port Richey, Pasco
County, Florida, United States, 34654

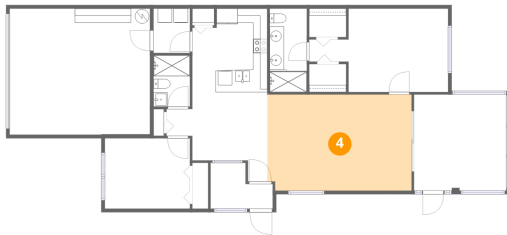
3 Floor 1 - Bath



Dimensions: 5'1" x 7'2"
Area: 37 sq. ft
Counted as living area: Yes

Heated: Yes
Finished: Yes
Enclosed: Yes
Contiguous: Yes
Permitted: Yes
Wet space: Yes
Addition: No
Conversion: No

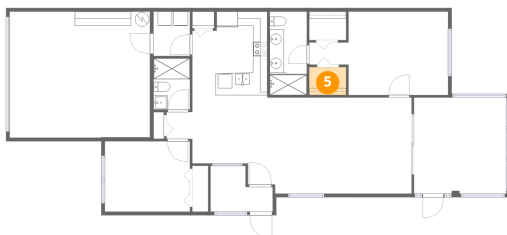
4 Floor 1 - Living Room



Dimensions: 20'3" x 13'5"
Area: 271 sq. ft
Counted as living area: Yes

Heated: Yes
Finished: Yes
Enclosed: Yes
Contiguous: Yes
Permitted: Yes
Wet space: No
Addition: No
Conversion: No

5 Floor 1 - W.I.C.



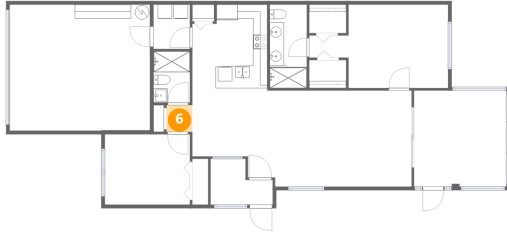
Dimensions: 5'2" x 3'11"
Area: 20 sq. ft
Counted as living area: Yes

Heated: Yes
Finished: Yes
Enclosed: Yes
Contiguous: Yes
Permitted: Yes
Wet space: No
Addition: No
Conversion: No

Home data report

11723 Foxworth Lane, Summertree, New Port Richey, Pasco
County, Florida, United States, 34654

6 Floor 1 - Hall



Dimensions: 3'7" x 3'9"
Area: 14 sq. ft
Counted as living area: Yes

Heated: Yes
Finished: Yes
Enclosed: Yes
Contiguous: Yes
Permitted: Yes
Wet space: No
Addition: No
Conversion: No

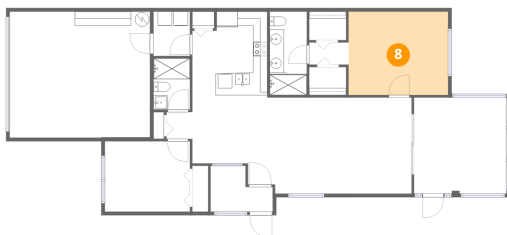
7 Floor 1 - W.I.C.



Dimensions: 5'2" x 4'0"
Area: 21 sq. ft
Counted as living area: Yes

Heated: Yes
Finished: Yes
Enclosed: Yes
Contiguous: Yes
Permitted: Yes
Wet space: No
Addition: No
Conversion: No

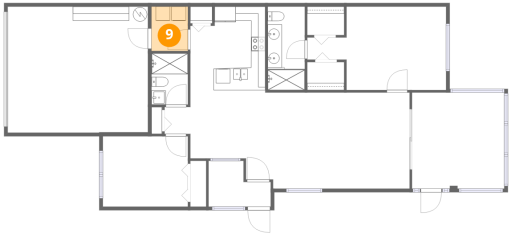
8 Floor 1 - Primary Bedroom



Dimensions: 14'0" x 11'8"
Area: 164 sq. ft
Counted as living area: Yes

Heated: Yes
Finished: Yes
Enclosed: Yes
Contiguous: Yes
Permitted: Yes
Wet space: No
Addition: No
Conversion: No

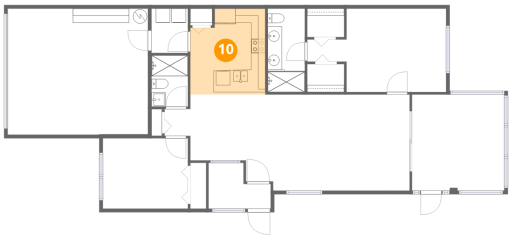
9 Floor 1 - Laundry



Dimensions: 5'1" x 6'3"
Area: 32 sq. ft
Counted as living area: Yes

Heated: Yes
Finished: Yes
Enclosed: Yes
Contiguous: Yes
Permitted: Yes
Wet space: No
Addition: No
Conversion: No

10 Floor 1 - Kitchen



Dimensions: 10'6" x 12'0"
Area: 118 sq. ft
Counted as living area: Yes

Heated: Yes
Finished: Yes
Enclosed: Yes
Contiguous: Yes
Permitted: Yes
Wet space: No
Addition: No
Conversion: No

11 Floor 1 - Hall



Dimensions: 5'6" x 3'1"
Area: 17 sq. ft
Counted as living area: Yes

Heated: Yes
Finished: Yes
Enclosed: Yes
Contiguous: Yes
Permitted: Yes
Wet space: No
Addition: No
Conversion: No

Home data report

11723 Foxworth Lane, Summertree, New Port Richey, Pasco
County, Florida, United States, 34654

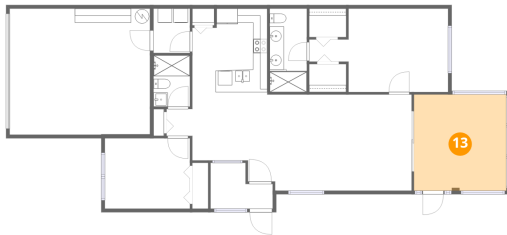
12 Floor 1 - Garage



Dimensions: 19'8" x 17'7"
Area: 348 sq. ft
Counted as living area: No

Heated: No
Finished: No
Enclosed: Yes
Contiguous: Yes
Permitted: Yes
Wet space: No
Addition: No
Conversion: No

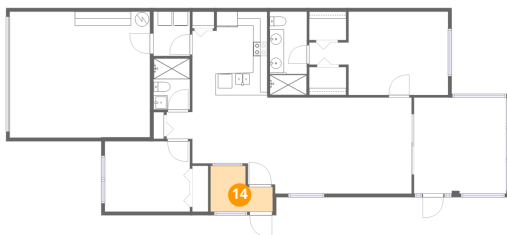
13 Floor 1 - Sun Room



Dimensions: 12'11" x 13'6"
Area: 175 sq. ft
Counted as living area: Yes

Heated: Yes
Finished: Yes
Enclosed: Yes
Contiguous: Yes
Permitted: Yes
Wet space: No
Addition: No
Conversion: No

14 Floor 1 - Screened Porch

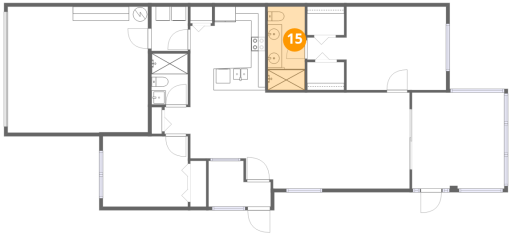


Dimensions: 8'9" x 6'5"
Area: 45 sq. ft
Counted as living area: No

Heated: No
Finished: No
Enclosed: No
Contiguous: Yes
Permitted: Yes
Wet space: No
Addition: No
Conversion: No

11723 Foxworth Lane, Summertree, New Port Richey, Pasco
County, Florida, United States, 34654

15 Floor 1 - Bath



Dimensions: 5'3" x 11'8"
Area: 61 sq. ft
Counted as living area: Yes

Heated: Yes
Finished: Yes
Enclosed: Yes
Contiguous: Yes
Permitted: Yes
Wet space: Yes
Addition: No
Conversion: No