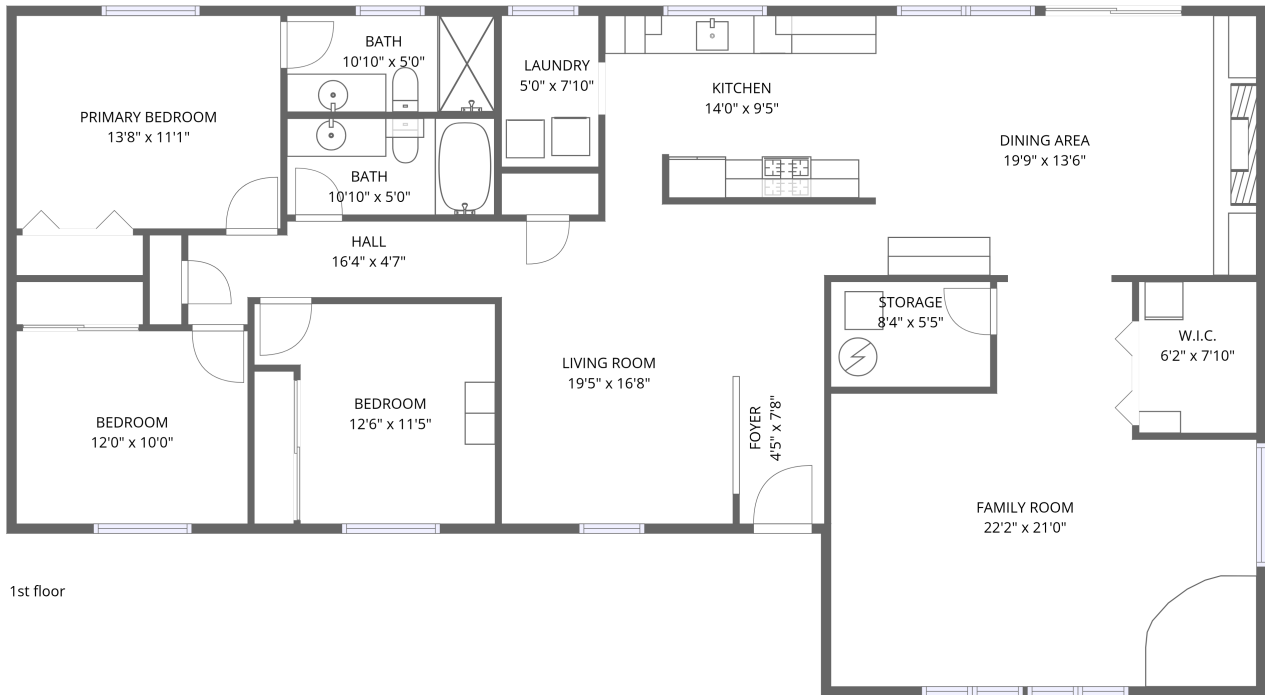


Home data report

33892 Shamrock Ln, Scappoose, OR, US



1st floor


Total Area: 1847 sq. ft

1st Floor: 1847 sq. ft

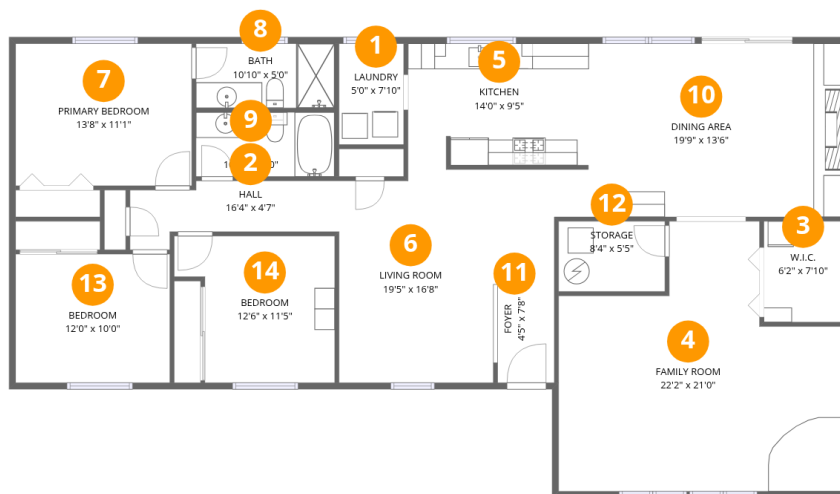
Excluded: Storage 45 sq. ft, Walls: 100 sq. ft

Property summary

 **1** Floors

 **3** Bedrooms

 **2** Bathrooms



Room dimensions

Floor 1

Total:1847sqft Excluded: 45sqft

#		Dimensions	sqft	Counted as living area
1	Laundry	5'0" x 7'10"	40 sq. ft	Yes
2	Hall	16'4" x 4'7"	65 sq. ft	Yes
3	W.I.C.	6'2" x 7'10"	48 sq. ft	Yes
4	Family Room	22'2" x 21'0"	363 sq. ft	Yes
5	Kitchen	14'0" x 9'5"	138 sq. ft	Yes
6	Living Room	19'5" x 16'8"	250 sq. ft	Yes
7	Primary Bedroom	13'8" x 11'1"	152 sq. ft	Yes
8	Bath	10'10" x 5'0"	54 sq. ft	Yes
9	Bath	10'10" x 5'0"	54 sq. ft	Yes
10	Dining Area	19'9" x 13'6"	268 sq. ft	Yes
11	Foyer	4'5" x 7'8"	34 sq. ft	Yes

Home data report

33892 Shamrock Ln,Scappoose,OR,US

#		Dimensions	sqft	Counted as living area
12	Storage	8'4" x 5'5"	45 sq. ft	No
13	Bedroom	12'0" x 10'0"	121 sq. ft	Yes
14	Bedroom	12'6" x 11'5"	124 sq. ft	Yes

1 Floor 1 - Laundry



Dimensions: 5'0" x 7'10"
Area: 40 sq. ft
Counted as living area: Yes

Heated: Yes
Finished: Yes
Enclosed: Yes
Contiguous: Yes
Permitted: Yes
Wet space: No
Addition: No
Conversion: No

2 Floor 1 - Hall



Dimensions: 16'4" x 4'7"
Area: 65 sq. ft
Counted as living area: Yes

Heated: Yes
Finished: Yes
Enclosed: Yes
Contiguous: Yes
Permitted: Yes
Wet space: No
Addition: No
Conversion: No

3 Floor 1 - W.I.C.



Dimensions: 6'2" x 7'10"
Area: 48 sq. ft
Counted as living area: Yes

Heated: Yes
Finished: Yes
Enclosed: Yes
Contiguous: Yes
Permitted: Yes
Wet space: No
Addition: No
Conversion: No

4 Floor 1 - Family Room



Dimensions: 22'2" x 21'0"
Area: 363 sq. ft
Counted as living area: Yes

Heated: Yes
Finished: Yes
Enclosed: Yes
Contiguous: Yes
Permitted: Yes
Wet space: No
Addition: No
Conversion: No

5 Floor 1 - Kitchen



Dimensions: 14'0" x 9'5"
Area: 138 sq. ft
Counted as living area: Yes

Heated: Yes
Finished: Yes
Enclosed: Yes
Contiguous: Yes
Permitted: Yes
Wet space: No
Addition: No
Conversion: No

6 Floor 1 - Living Room



Dimensions: 19'5" x 16'8"
Area: 250 sq. ft
Counted as living area: Yes

Heated: Yes
Finished: Yes
Enclosed: Yes
Contiguous: Yes
Permitted: Yes
Wet space: No
Addition: No
Conversion: No

7 Floor 1 - Primary Bedroom



Dimensions: 13'8" x 11'1"
Area: 152 sq. ft
Counted as living area: Yes

Heated: Yes
Finished: Yes
Enclosed: Yes
Contiguous: Yes
Permitted: Yes
Wet space: No
Addition: No
Conversion: No

8 Floor 1 - Bath



Dimensions: 10'10" x 5'0"
Area: 54 sq. ft
Counted as living area: Yes

Heated: Yes
Finished: Yes
Enclosed: Yes
Contiguous: Yes
Permitted: Yes
Wet space: Yes
Addition: No
Conversion: No

9 Floor 1 - Bath



Dimensions: 10'10" x 5'0"
Area: 54 sq. ft
Counted as living area: Yes

Heated: Yes
Finished: Yes
Enclosed: Yes
Contiguous: Yes
Permitted: Yes
Wet space: Yes
Addition: No
Conversion: No

10 Floor 1 - Dining Area



Dimensions: 19'9" x 13'6"
Area: 268 sq. ft
Counted as living area: Yes

Heated: Yes
Finished: Yes
Enclosed: Yes
Contiguous: Yes
Permitted: Yes
Wet space: No
Addition: No
Conversion: No

11 Floor 1 - Foyer



Dimensions: 4'5" x 7'8"
Area: 34 sq. ft
Counted as living area: Yes

Heated: Yes
Finished: Yes
Enclosed: Yes
Contiguous: Yes
Permitted: Yes
Wet space: No
Addition: No
Conversion: No

12 Floor 1 - Storage



Dimensions: 8'4" x 5'5"
Area: 45 sq. ft
Counted as living area: No

Heated: No
Finished: No
Enclosed: No
Contiguous: Yes
Permitted: Yes
Wet space: No
Addition: No
Conversion: No

13 Floor 1 - Bedroom



Dimensions: 12'0" x 10'0"
Area: 121 sq. ft
Counted as living area: Yes

Heated: Yes
Finished: Yes
Enclosed: Yes
Contiguous: Yes
Permitted: Yes
Wet space: No
Addition: No
Conversion: No

14 Floor 1 - Bedroom



Dimensions: 12'6" x 11'5"
Area: 124 sq. ft
Counted as living area: Yes

Heated: Yes
Finished: Yes
Enclosed: Yes
Contiguous: Yes
Permitted: Yes
Wet space: No
Addition: No
Conversion: No