

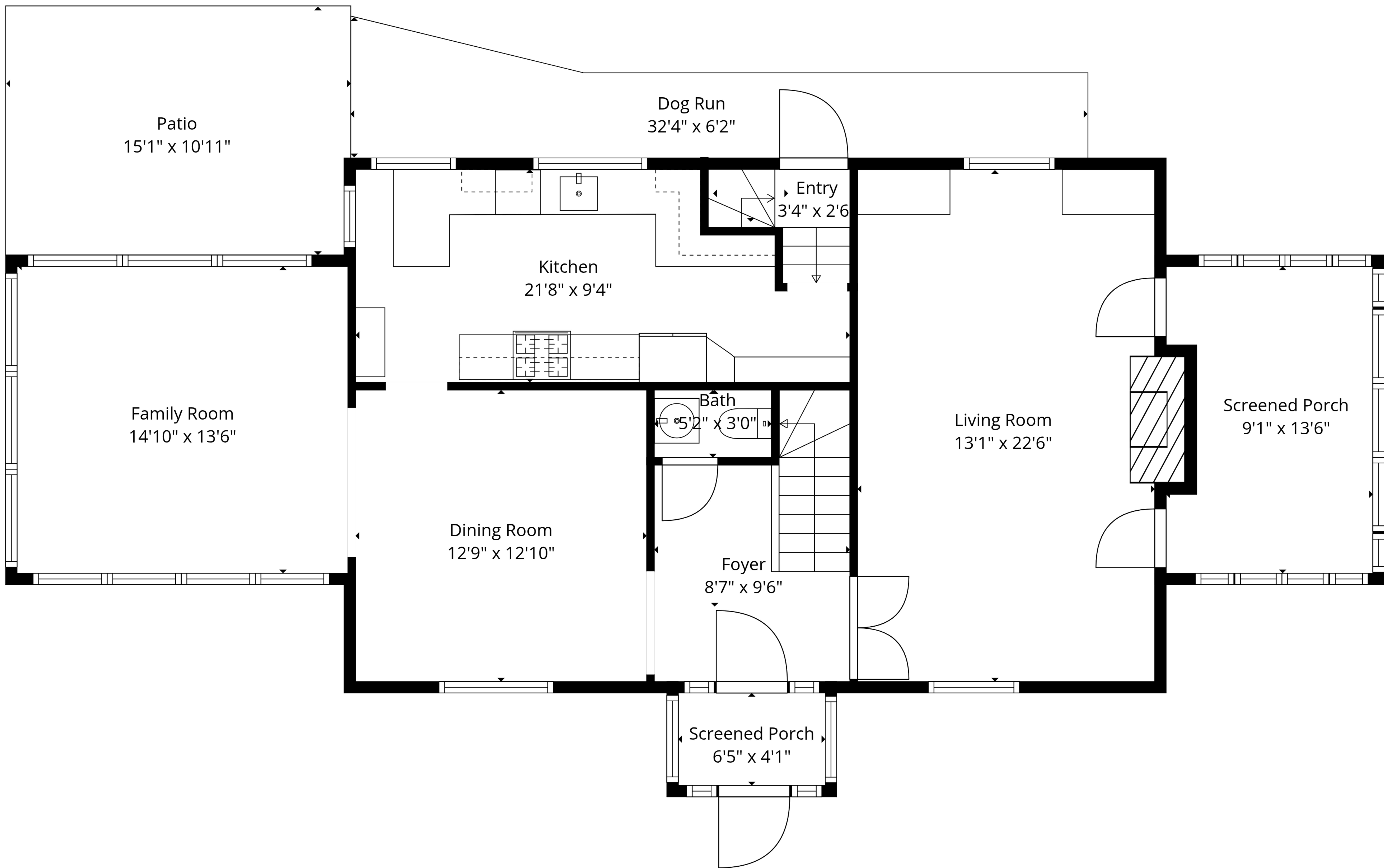
Laundry  
18'5" x 9'1"

Recreation Room  
27'3" x 21'1"

Storage  
7'6" x 15'10"

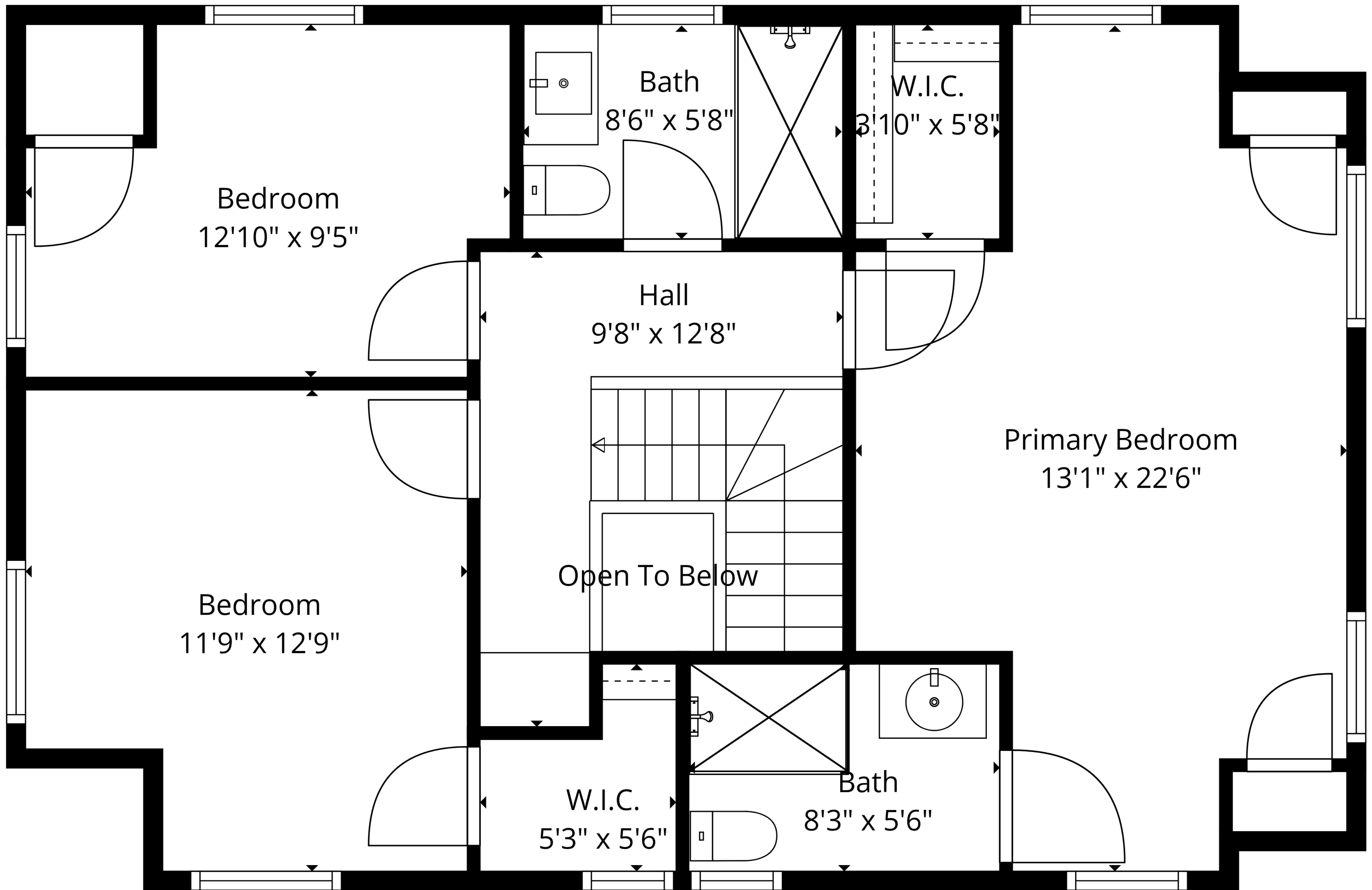
**Total: 2395 sq. ft**

Basement: 644 sq. Ft, 1st Floor: 993 sq. Ft, 2nd Floor: 758 sq. ft  
 Excluded Areas: Storage: 109 sq. Ft, Screened Porch: 140 sq. Ft, Patio: 165 sq. Ft,  
 Dog Run: 134 sq. Ft, Fireplace: 9 sq. Ft, Open To Below: 11 sq. Ft,  
 Walls: 209 sq. ft



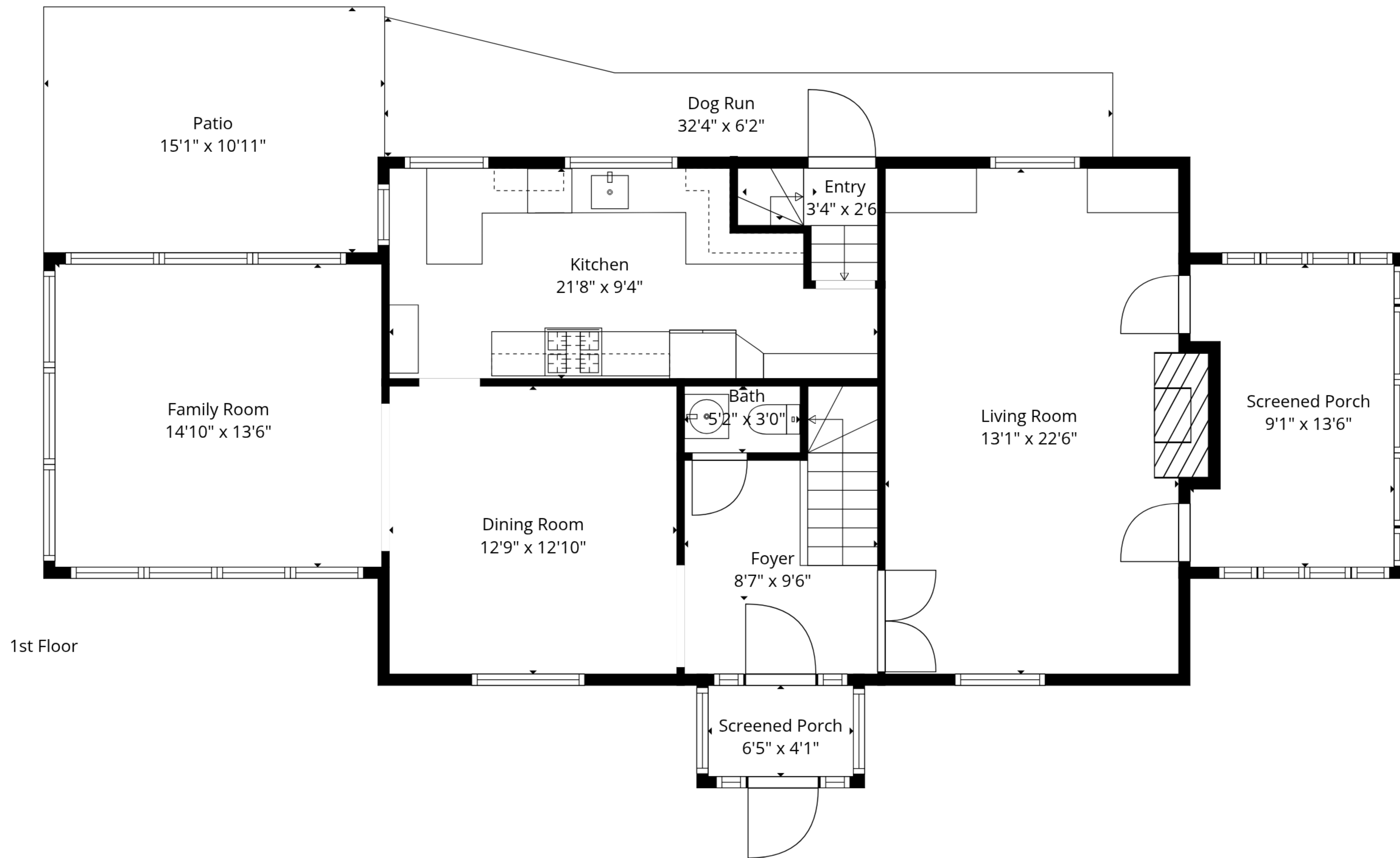
**Total: 2395 sq. ft**

Basement: 644 sq. Ft, 1st Floor: 993 sq. Ft, 2nd Floor: 758 sq. ft  
 Excluded Areas: Storage: 109 sq. Ft, Screened Porch: 140 sq. Ft, Patio: 165 sq. Ft,  
 Dog Run: 134 sq. Ft, Fireplace: 9 sq. Ft, Open To Below: 11 sq. Ft,  
 Walls: 209 sq. ft

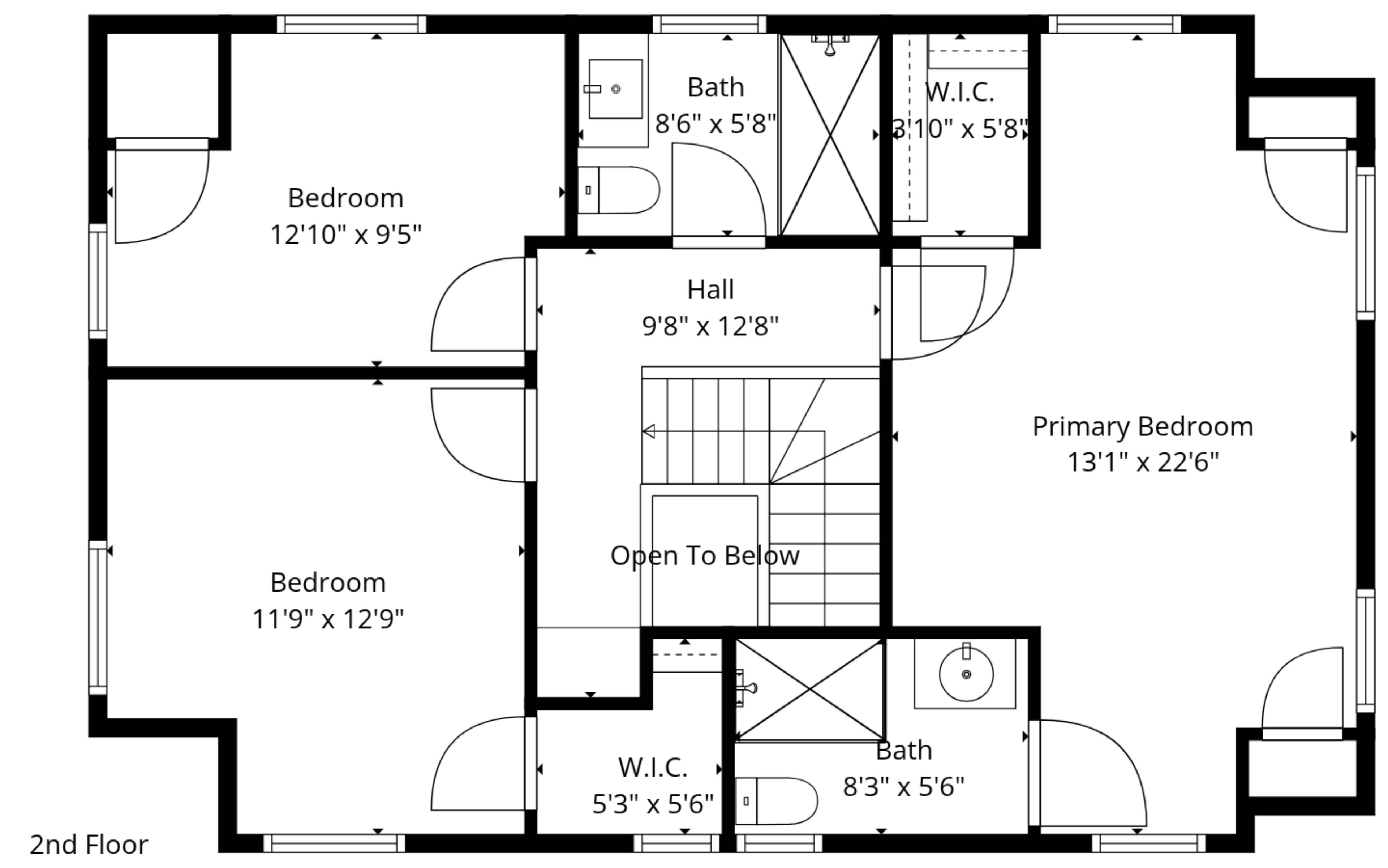


**Total: 2395 sq. ft**

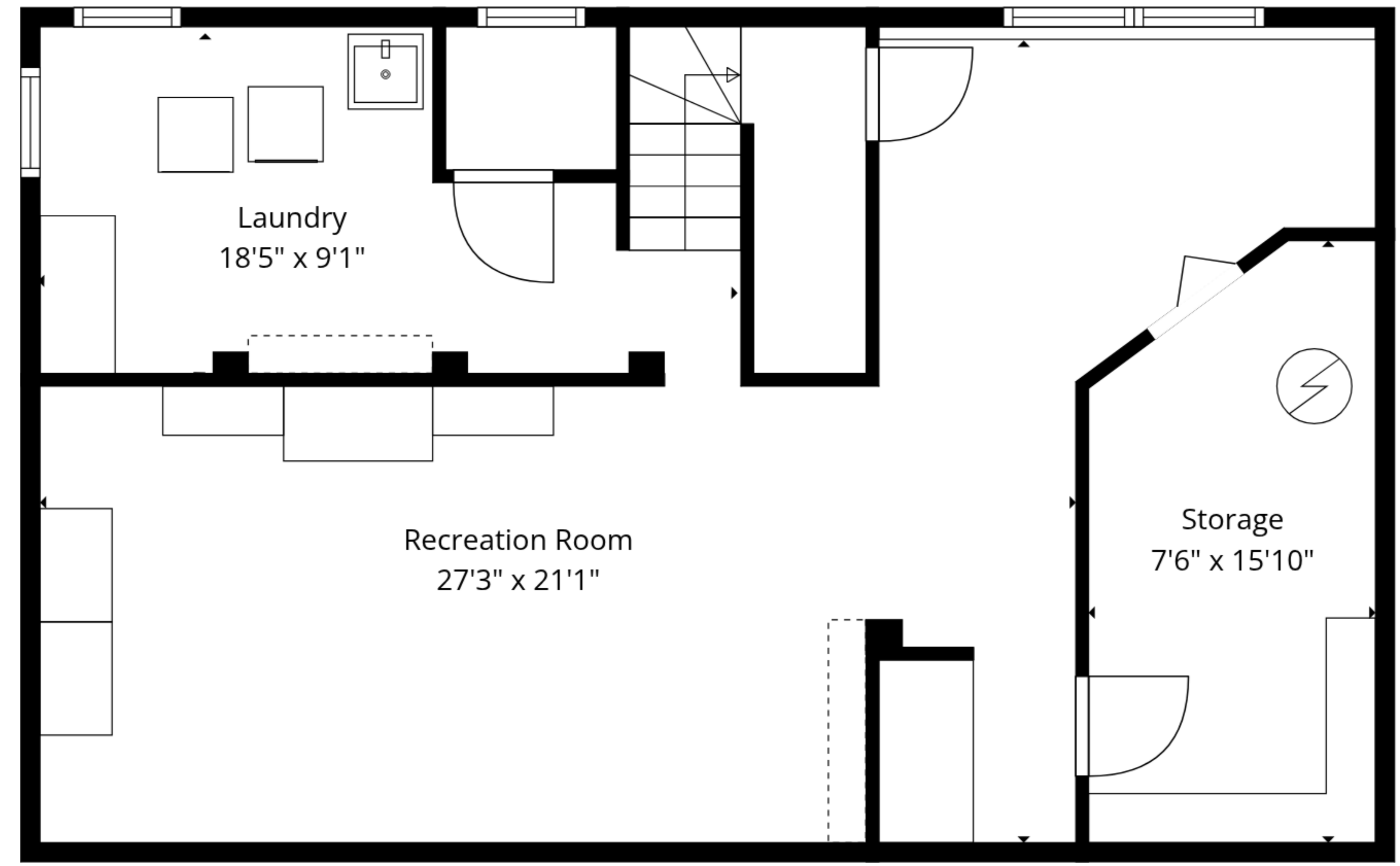
Basement: 644 sq. Ft, 1st Floor: 993 sq. Ft, 2nd Floor: 758 sq. ft  
 Excluded Areas: Storage: 109 sq. Ft, Screened Porch: 140 sq. Ft, Patio: 165 sq. Ft,  
 Dog Run: 134 sq. Ft, Fireplace: 9 sq. Ft, Open To Below: 11 sq. Ft,  
 Walls: 209 sq. ft



1st Floor



2nd Floor



Basement

**Total: 2395 sq. ft**  
 Basement: 644 sq. Ft, 1st Floor: 993 sq. Ft, 2nd Floor: 758 sq. ft  
 Excluded Areas: Storage: 109 sq. Ft, Screened Porch: 140 sq. Ft, Patio: 165 sq. Ft,  
 Dog Run: 134 sq. Ft, Fireplace: 9 sq. Ft, Open To Below: 11 sq. Ft,  
 Walls: 209 sq. ft