

# Home data report

## 4606 North Bend Way, Longmont, CO, US



**Total Area: 1832 sq. ft**

Basement: 0 sq. ft, 1st Floor: 696 sq. ft, 2nd Floor: 1136 sq. ft

Excluded: Basement 661 sq. ft, Garage 427 sq. ft, Walls: 227 sq. ft

### Property summary

 **3** Floors

 **3** Bedrooms

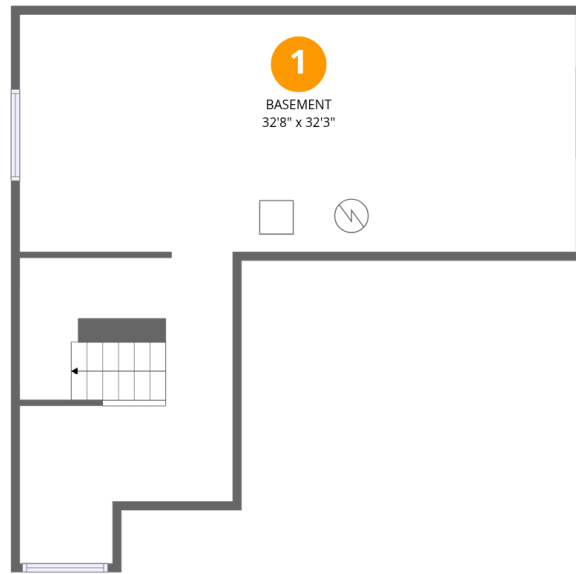
 **2** Bathrooms

Home data report

**4606 North Bend Way, Longmont, CO, US**

 **1**  
Half baths

 **1**  
Garages



## Room dimensions

Floor 1 Below grade

Total: 0 sqft

Excluded: 661 sqft

#		Dimensions	sqft	Counted as living area
1	Basement	32'8" x 32'3"	656 sq. ft	No



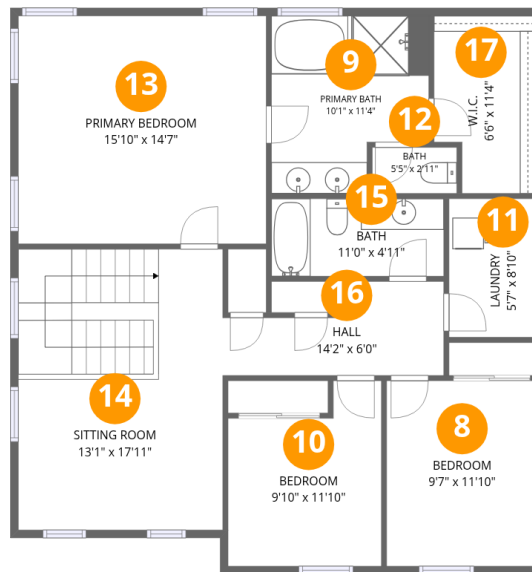
## Room dimensions

Floor 2

Total: 696 sqft

Excluded: 427 sqft

#		Dimensions	sqft	Counted as living area
2	Bath	5'11" x 5'3"	31 sq. ft	Yes
3	Living Room	12'11" x 14'7"	189 sq. ft	Yes
4	Kitchen	9'9" x 14'7"	136 sq. ft	Yes
5	Dining Area	10'5" x 14'7"	151 sq. ft	Yes
6	Foyer	10'8" x 14'11"	162 sq. ft	Yes
7	Garage	19'8" x 21'8"	427 sq. ft	No



## Room dimensions

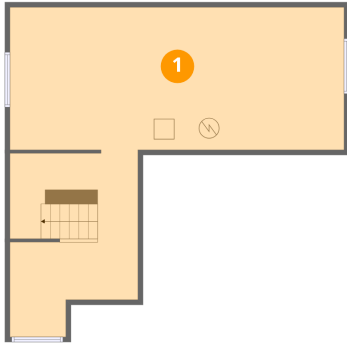
Floor 3

Total: 1136 sqft

Excluded: 0 sqft

#		Dimensions	sqft	Counted as living area
8	Bedroom	9'7" x 11'10"	113 sq. ft	Yes
9	Primary Bath	10'1" x 11'4"	102 sq. ft	Yes
10	Bedroom	9'10" x 11'10"	100 sq. ft	Yes
11	Laundry	5'7" x 8'10"	49 sq. ft	Yes
12	Bath	5'5" x 2'11"	16 sq. ft	Yes
13	Primary Bedroom	15'10" x 14'7"	232 sq. ft	Yes
14	Sitting Room	13'1" x 17'11"	235 sq. ft	Yes
15	Bath	11'0" x 4'11"	55 sq. ft	Yes
16	Hall	14'2" x 6'0"	67 sq. ft	Yes
17	W.I.C.	6'6" x 11'4"	68 sq. ft	Yes

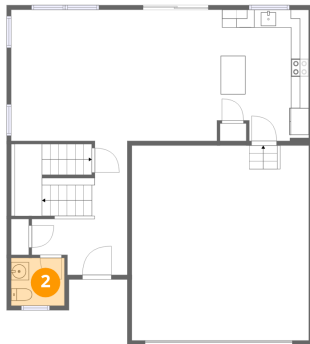
## 1 Floor 1 - Basement



Dimensions: 32'8" x 32'3"  
Area: 656 sq. ft  
Counted as living area: No

Heated: Yes  
Finished: No  
Enclosed: Yes  
Contiguous: Yes  
Permitted: Yes  
Wet space: No  
Addition: No  
Conversion: No

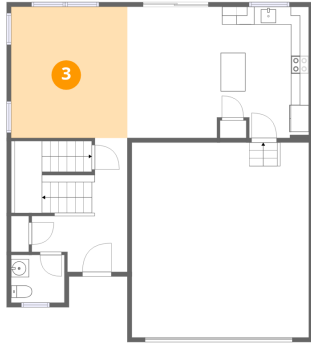
## 2 Floor 2 - Bath



Dimensions: 5'11" x 5'3"  
Area: 31 sq. ft  
Counted as living area: Yes

Heated: Yes  
Finished: Yes  
Enclosed: Yes  
Contiguous: Yes  
Permitted: Yes  
Wet space: Yes  
Addition: No  
Conversion: No

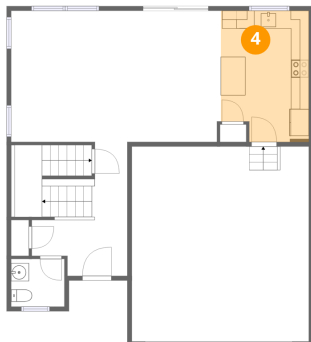
### 3 Floor 2 - Living Room



Dimensions: 12'11" x 14'7"  
Area: 189 sq. ft  
Counted as living area: Yes

Heated: Yes  
Finished: Yes  
Enclosed: Yes  
Contiguous: Yes  
Permitted: Yes  
Wet space: No  
Addition: No  
Conversion: No

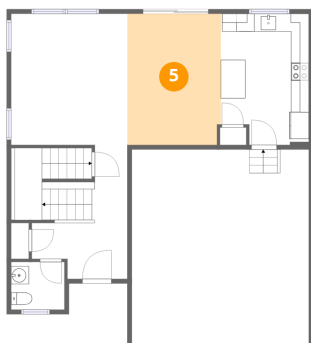
### 4 Floor 2 - Kitchen



Dimensions: 9'9" x 14'7"  
Area: 136 sq. ft  
Counted as living area: Yes

Heated: Yes  
Finished: Yes  
Enclosed: Yes  
Contiguous: Yes  
Permitted: Yes  
Wet space: No  
Addition: No  
Conversion: No

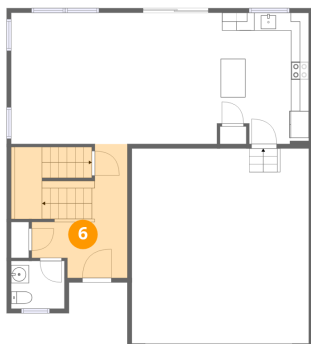
### 5 Floor 2 - Dining Area



Dimensions: 10'5" x 14'7"  
Area: 151 sq. ft  
Counted as living area: Yes

Heated: Yes  
Finished: Yes  
Enclosed: Yes  
Contiguous: Yes  
Permitted: Yes  
Wet space: No  
Addition: No  
Conversion: No

### 6 Floor 2 - Foyer



Dimensions: 10'8" x 14'11"  
Area: 162 sq. ft  
Counted as living area: Yes

Heated: Yes  
Finished: Yes  
Enclosed: Yes  
Contiguous: Yes  
Permitted: Yes  
Wet space: No  
Addition: No  
Conversion: No

### 7 Floor 2 - Garage



Dimensions: 19'8" x 21'8"  
Area: 427 sq. ft  
Counted as living area: No

Heated: No  
Finished: No  
Enclosed: Yes  
Contiguous: Yes  
Permitted: Yes  
Wet space: No  
Addition: No  
Conversion: No

### 8 Floor 3 - Bedroom



Dimensions: 9'7" x 11'10"  
Area: 113 sq. ft  
Counted as living area: Yes

Heated: Yes  
Finished: Yes  
Enclosed: Yes  
Contiguous: Yes  
Permitted: Yes  
Wet space: No  
Addition: No  
Conversion: No

### 9 Floor 3 - Primary Bath



Dimensions: 10'1" x 11'4"  
Area: 102 sq. ft  
Counted as living area: Yes

Heated: Yes  
Finished: Yes  
Enclosed: Yes  
Contiguous: Yes  
Permitted: Yes  
Wet space: Yes  
Addition: No  
Conversion: No

### 10 Floor 3 - Bedroom



Dimensions: 9'10" x 11'10"  
Area: 100 sq. ft  
Counted as living area: Yes

Heated: Yes  
Finished: Yes  
Enclosed: Yes  
Contiguous: Yes  
Permitted: Yes  
Wet space: No  
Addition: No  
Conversion: No

### 11 Floor 3 - Laundry



Dimensions: 5'7" x 8'10"  
Area: 49 sq. ft  
Counted as living area: Yes

Heated: Yes  
Finished: Yes  
Enclosed: Yes  
Contiguous: Yes  
Permitted: Yes  
Wet space: No  
Addition: No  
Conversion: No

### 12 Floor 3 - Bath



Dimensions: 5'5" x 2'11"  
Area: 16 sq. ft  
Counted as living area: Yes

Heated: Yes  
Finished: Yes  
Enclosed: Yes  
Contiguous: Yes  
Permitted: Yes  
Wet space: Yes  
Addition: No  
Conversion: No

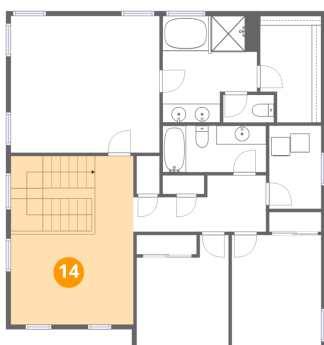
### 13 Floor 3 - Primary Bedroom



Dimensions: 15'10" x 14'7"  
Area: 232 sq. ft  
Counted as living area: Yes

Heated: Yes  
Finished: Yes  
Enclosed: Yes  
Contiguous: Yes  
Permitted: Yes  
Wet space: No  
Addition: No  
Conversion: No

### 14 Floor 3 - Sitting Room



Dimensions: 13'1" x 17'11"  
Area: 235 sq. ft  
Counted as living area: Yes

Heated: Yes  
Finished: Yes  
Enclosed: Yes  
Contiguous: Yes  
Permitted: Yes  
Wet space: No  
Addition: No  
Conversion: No

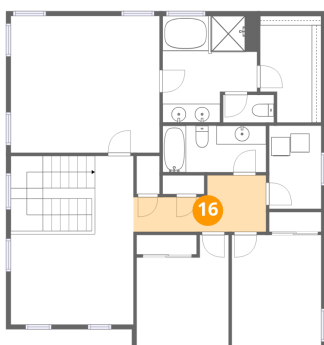
**15** Floor 3 - Bath



Dimensions: 11'0" x 4'11"  
Area: 55 sq. ft  
Counted as living area: Yes

Heated: Yes  
Finished: Yes  
Enclosed: Yes  
Contiguous: Yes  
Permitted: Yes  
Wet space: Yes  
Addition: No  
Conversion: No

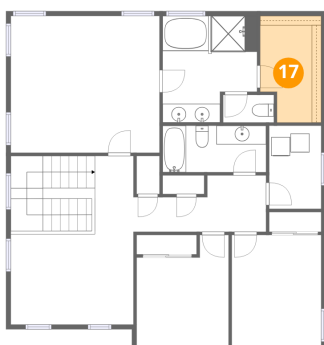
**16** Floor 3 - Hall



Dimensions: 14'2" x 6'0"  
Area: 67 sq. ft  
Counted as living area: Yes

Heated: Yes  
Finished: Yes  
Enclosed: Yes  
Contiguous: Yes  
Permitted: Yes  
Wet space: No  
Addition: No  
Conversion: No

**17** Floor 3 - W.I.C.



Dimensions: 6'6" x 11'4"  
Area: 68 sq. ft  
Counted as living area: Yes

Heated: Yes  
Finished: Yes  
Enclosed: Yes  
Contiguous: Yes  
Permitted: Yes  
Wet space: No  
Addition: No  
Conversion: No