

# Home data report

## 24163 Old Meadow Rd, Seaford, DE, US



**Total Area: 2458 sq. ft**

Basement: 0 sq. ft, 1st Floor: 2458 sq. ft

Excluded: Basement 1273 sq. ft, Garage 395 sq. ft, Deck 117 sq. ft, Walls: 262 sq. ft

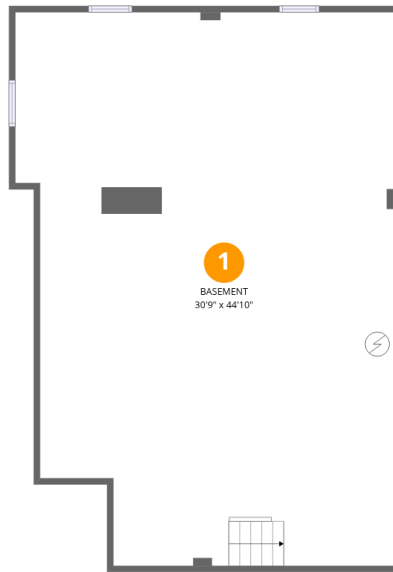
### Property summary

 **2** Floors

 **4** Bedrooms

 **3** Bathrooms

 **1** Garages



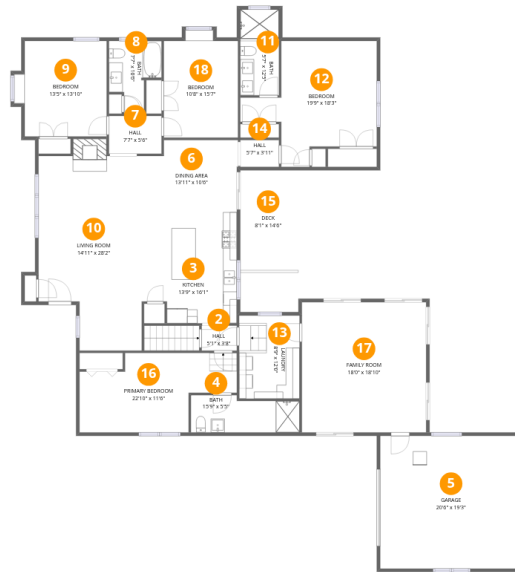
## Room dimensions

Floor 1 Below grade

Total: 0sqft

Excluded: 1273sqft

#		Dimensions	sqft	Counted as living area
1	Basement	30'9" x 44'10"	1377 sq. ft	No



## Room dimensions

Floor 2

Total: 2458 sqft

Excluded: 512 sqft

#		Dimensions	sqft	Counted as living area
2	Hall	5'1" x 3'8"	19 sq. ft	Yes
3	Kitchen	13'9" x 16'1"	221 sq. ft	Yes
4	Bath	15'9" x 5'5"	85 sq. ft	Yes
5	Garage	20'6" x 19'3"	395 sq. ft	No
6	Dining Area	13'11" x 10'6"	146 sq. ft	Yes
7	Hall	7'7" x 5'6"	42 sq. ft	Yes
8	Bath	7'7" x 10'6"	80 sq. ft	Yes
9	Bedroom	13'5" x 13'10"	185 sq. ft	Yes
10	Living Room	14'11" x 28'2"	420 sq. ft	Yes
11	Bath	5'7" x 12'5"	69 sq. ft	Yes
12	Bedroom	19'9" x 18'3"	361 sq. ft	Yes

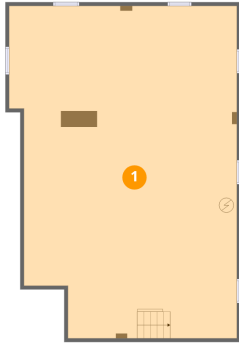
Home data report

**24163 Old Meadow Rd,Seaford,DE,US**

#		Dimensions	sqft	Counted as living area
13	Laundry	8'9" x 12'0"	105 sq. ft	Yes
14	Hall	5'7" x 3'11"	22 sq. ft	Yes
15	Deck	8'1" x 14'6"	117 sq. ft	No
16	Primary Bedroom	22'10" x 11'6"	262 sq. ft	Yes
17	Family Room	18'0" x 18'10"	339 sq. ft	Yes
18	Bedroom	10'8" x 15'7"	166 sq. ft	Yes

## 1 Floor 1 - Basement

---

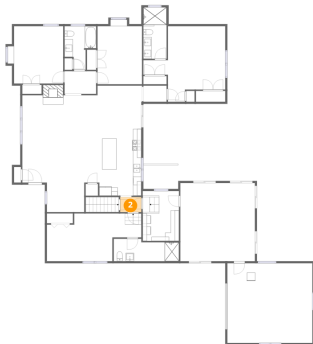


Dimensions: 30'9" x 44'10"  
Area: 1377 sq. ft  
Counted as living area: No

Heated: Yes  
Finished: No  
Enclosed: Yes  
Contiguous: Yes  
Permitted: Yes  
Wet space: No  
Addition: No  
Conversion: No

## 2 Floor 2 - Hall

---



Dimensions: 5'1" x 3'8"  
Area: 19 sq. ft  
Counted as living area: Yes

Heated: Yes  
Finished: Yes  
Enclosed: Yes  
Contiguous: Yes  
Permitted: Yes  
Wet space: No  
Addition: No  
Conversion: No

### 3 Floor 2 - Kitchen



Dimensions: 13'9" x 16'1"  
Area: 221 sq. ft  
Counted as living area: Yes

Heated: Yes  
Finished: Yes  
Enclosed: Yes  
Contiguous: Yes  
Permitted: Yes  
Wet space: No  
Addition: No  
Conversion: No

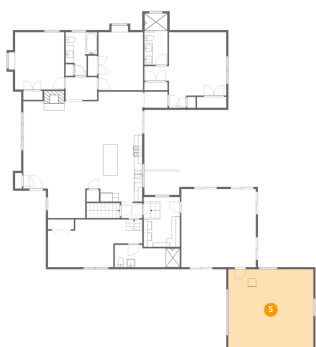
### 4 Floor 2 - Bath



Dimensions: 15'9" x 5'5"  
Area: 85 sq. ft  
Counted as living area: Yes

Heated: Yes  
Finished: Yes  
Enclosed: Yes  
Contiguous: Yes  
Permitted: Yes  
Wet space: Yes  
Addition: No  
Conversion: No

### 5 Floor 2 - Garage



Dimensions: 20'6" x 19'3"  
Area: 395 sq. ft  
Counted as living area: No

Heated: No  
Finished: No  
Enclosed: Yes  
Contiguous: Yes  
Permitted: Yes  
Wet space: No  
Addition: No  
Conversion: No

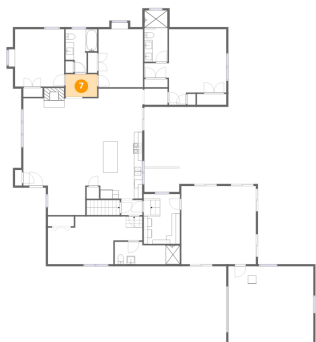
## 6 Floor 2 - Dining Area



Dimensions: 13'11" x 10'6"  
Area: 146 sq. ft  
Counted as living area: Yes

Heated: Yes  
Finished: Yes  
Enclosed: Yes  
Contiguous: Yes  
Permitted: Yes  
Wet space: No  
Addition: No  
Conversion: No

## 7 Floor 2 - Hall



Dimensions: 7'7" x 5'6"  
Area: 42 sq. ft  
Counted as living area: Yes

Heated: Yes  
Finished: Yes  
Enclosed: Yes  
Contiguous: Yes  
Permitted: Yes  
Wet space: No  
Addition: No  
Conversion: No

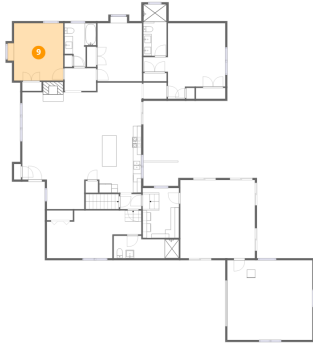
## 8 Floor 2 - Bath



Dimensions: 7'7" x 10'6"  
Area: 80 sq. ft  
Counted as living area: Yes

Heated: Yes  
Finished: Yes  
Enclosed: Yes  
Contiguous: Yes  
Permitted: Yes  
Wet space: Yes  
Addition: No  
Conversion: No

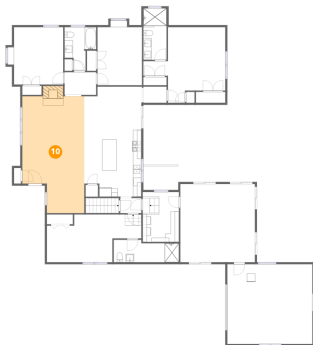
## 9 Floor 2 - Bedroom



Dimensions: 13'5" x 13'10"  
Area: 185 sq. ft  
Counted as living area: Yes

Heated: Yes  
Finished: Yes  
Enclosed: Yes  
Contiguous: Yes  
Permitted: Yes  
Wet space: No  
Addition: No  
Conversion: No

## 10 Floor 2 - Living Room



Dimensions: 14'11" x 28'2"  
Area: 420 sq. ft  
Counted as living area: Yes

Heated: Yes  
Finished: Yes  
Enclosed: Yes  
Contiguous: Yes  
Permitted: Yes  
Wet space: No  
Addition: No  
Conversion: No

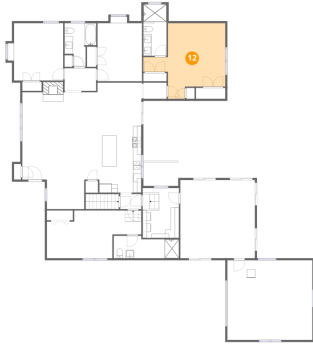
## 11 Floor 2 - Bath



Dimensions: 5'7" x 12'5"  
Area: 69 sq. ft  
Counted as living area: Yes

Heated: Yes  
Finished: Yes  
Enclosed: Yes  
Contiguous: Yes  
Permitted: Yes  
Wet space: Yes  
Addition: No  
Conversion: No

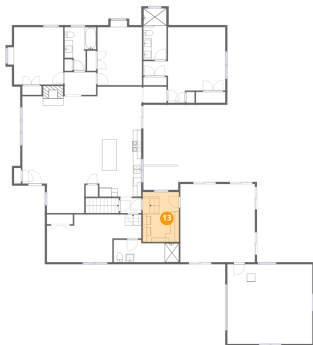
## 12 Floor 2 - Bedroom



Dimensions: 19'9" x 18'3"  
Area: 361 sq. ft  
Counted as living area: Yes

Heated: Yes  
Finished: Yes  
Enclosed: Yes  
Contiguous: Yes  
Permitted: Yes  
Wet space: No  
Addition: No  
Conversion: No

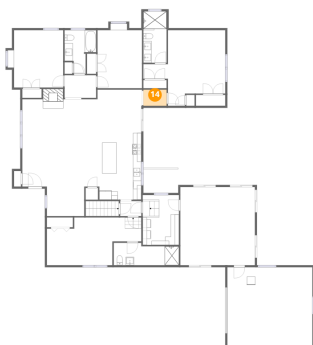
## 13 Floor 2 - Laundry



Dimensions: 8'9" x 12'0"  
Area: 105 sq. ft  
Counted as living area: Yes

Heated: Yes  
Finished: Yes  
Enclosed: Yes  
Contiguous: Yes  
Permitted: Yes  
Wet space: No  
Addition: No  
Conversion: No

## 14 Floor 2 - Hall



Dimensions: 5'7" x 3'11"  
Area: 22 sq. ft  
Counted as living area: Yes

Heated: Yes  
Finished: Yes  
Enclosed: Yes  
Contiguous: Yes  
Permitted: Yes  
Wet space: No  
Addition: No  
Conversion: No

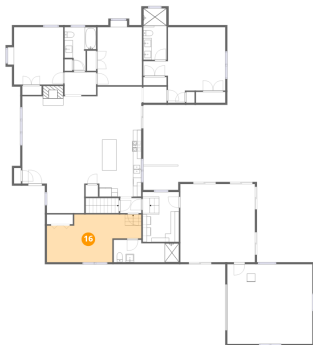
**15** Floor 2 - Deck



Dimensions: 8'1" x 14'6"  
Area: 117 sq. ft  
Counted as living area: No

Heated: No  
Finished: No  
Enclosed: No  
Contiguous: Yes  
Permitted: Yes  
Wet space: No  
Addition: No  
Conversion: No

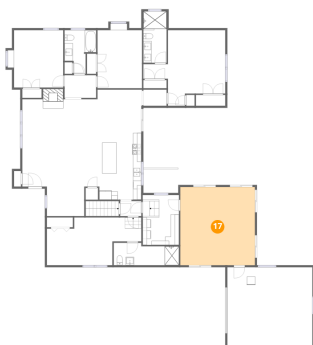
**16** Floor 2 - Primary Bedroom



Dimensions: 22'10" x 11'6"  
Area: 262 sq. ft  
Counted as living area: Yes

Heated: Yes  
Finished: Yes  
Enclosed: Yes  
Contiguous: Yes  
Permitted: Yes  
Wet space: No  
Addition: No  
Conversion: No

**17** Floor 2 - Family Room

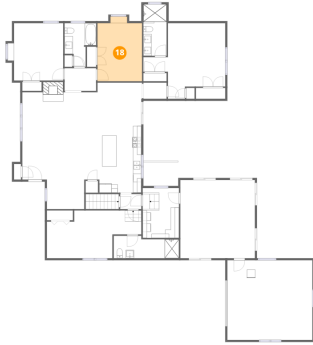


Dimensions: 18'0" x 18'10"  
Area: 339 sq. ft  
Counted as living area: Yes

Heated: Yes  
Finished: Yes  
Enclosed: Yes  
Contiguous: Yes  
Permitted: Yes  
Wet space: No  
Addition: No  
Conversion: No

**18** Floor 2 - Bedroom

---



**Dimensions:** 10'8" x 15'7"

**Area:** 166 sq. ft

**Counted as living area:** Yes

**Heated:** Yes

**Finished:** Yes

**Enclosed:** Yes

**Contiguous:** Yes

**Permitted:** Yes

**Wet space:** No

**Addition:** No

**Conversion:** No