

Total Area: 1131 sq. ft

Basement: 129 sq. ft, 1st Floor: 505 sq. ft, 2nd Floor: 497 sq. ft

Excluded: Garage 230 sq. ft, Utility 36 sq. ft, Bath 61 sq. ft, Patio 69 sq. ft, Porch 14 sq. ft,
Walls: 114 sq. ft


Property summary



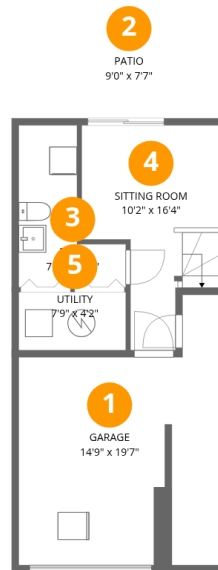
Home data report

**5030 Heatherleigh Ave, #169, Mississauga, ON, CA,
#169**



 **1**
Half baths

 **1**
Garages



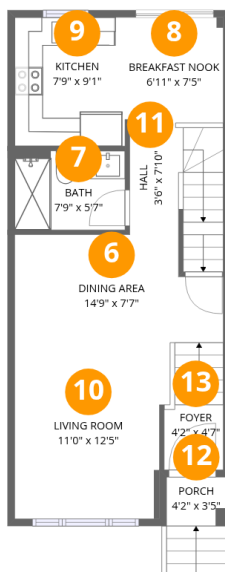
Room dimensions

Floor 1 Below grade

Total: 129sqft

Excluded: 396sqft

#		Dimensions	sqft	Counted as living area
1	Garage	14'9" x 19'7"	230 sq. ft	No
2	Patio	9'0" x 7'7"	69 sq. ft	No
3	Bath	7'9" x 11'9"	61 sq. ft	No
4	Sitting Room	10'2" x 16'4"	122 sq. ft	Yes
5	Utility	7'9" x 4'2"	33 sq. ft	No



Room dimensions

Floor 2

Total: 505 sqft Excluded: 14 sqft

#		Dimensions	sqft	Counted as living area
6	Dining Area	14'9" x 7'7"	103 sq. ft	Yes
7	Bath	7'9" x 5'7"	43 sq. ft	Yes
8	Breakfast Nook	6'11" x 7'5"	52 sq. ft	Yes
9	Kitchen	7'9" x 9'1"	71 sq. ft	Yes
10	Living Room	11'0" x 12'5"	132 sq. ft	Yes
11	Hall	3'6" x 7'10"	59 sq. ft	Yes
12	Porch	4'2" x 3'5"	14 sq. ft	No
13	Foyer	4'2" x 4'7"	34 sq. ft	Yes



Room dimensions

Floor 3

Total: 497 sqft Excluded: 0 sqft

#		Dimensions	sqft	Counted as living area
14	Bath	7'9" x 5'0"	39 sq. ft	Yes
15	Primary Bedroom	12'4" x 10'5"	127 sq. ft	Yes
16	Bedroom	7'9" x 9'9"	75 sq. ft	Yes
17	Hall	6'7" x 10'9"	80 sq. ft	Yes
18	Bedroom	10'2" x 13'6"	114 sq. ft	Yes

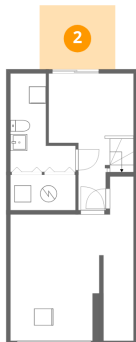
1 Floor 1 - Garage



Dimensions: 14'9" x 19'7"
Area: 230 sq. ft
Counted as living area: No

Heated: No
Finished: No
Enclosed: Yes
Contiguous: Yes
Permitted: Yes
Wet space: No
Addition: No
Conversion: No

2 Floor 1 - Patio



Dimensions: 9'0" x 7'7"
Area: 69 sq. ft
Counted as living area: No

Heated: No
Finished: No
Enclosed: No
Contiguous: Yes
Permitted: Yes
Wet space: No
Addition: No
Conversion: No

3 Floor 1 - Bath



Dimensions: 7'9" x 11'9"
Area: 61 sq. ft
Counted as living area: No

Heated: Yes
Finished: No
Enclosed: Yes
Contiguous: Yes
Permitted: Yes
Wet space: No
Addition: No
Conversion: No

4 Floor 1 - Sitting Room



Dimensions: 10'2" x 16'4"
Area: 122 sq. ft
Counted as living area: Yes

Heated: Yes
Finished: Yes
Enclosed: Yes
Contiguous: Yes
Permitted: Yes
Wet space: No
Addition: No
Conversion: No

5 Floor 1 - Utility



Dimensions: 7'9" x 4'2"
Area: 33 sq. ft
Counted as living area: No

Heated: Yes
Finished: No
Enclosed: Yes
Contiguous: Yes
Permitted: Yes
Wet space: No
Addition: No
Conversion: No

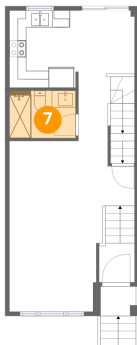
6 Floor 2 - Dining Area



Dimensions: 14'9" x 7'7"
Area: 103 sq. ft
Counted as living area: Yes

Heated: Yes
Finished: Yes
Enclosed: Yes
Contiguous: Yes
Permitted: Yes
Wet space: No
Addition: No
Conversion: No

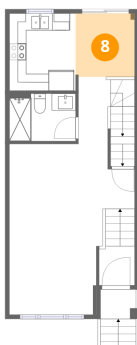
7 Floor 2 - Bath



Dimensions: 7'9" x 5'7"
Area: 43 sq. ft
Counted as living area: Yes

Heated: Yes
Finished: Yes
Enclosed: Yes
Contiguous: Yes
Permitted: Yes
Wet space: Yes
Addition: No
Conversion: No

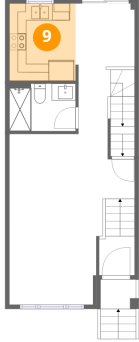
8 Floor 2 - Breakfast Nook



Dimensions: 6'11" x 7'5"
Area: 52 sq. ft
Counted as living area: Yes

Heated: Yes
Finished: Yes
Enclosed: Yes
Contiguous: Yes
Permitted: Yes
Wet space: No
Addition: No
Conversion: No

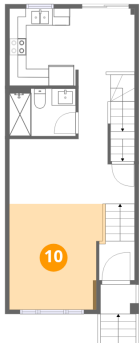
9 Floor 2 - Kitchen



Dimensions: 7'9" x 9'1"
Area: 71 sq. ft
Counted as living area: Yes

Heated: Yes
Finished: Yes
Enclosed: Yes
Contiguous: Yes
Permitted: Yes
Wet space: No
Addition: No
Conversion: No

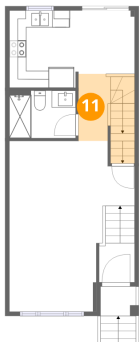
10 Floor 2 - Living Room



Dimensions: 11'0" x 12'5"
Area: 132 sq. ft
Counted as living area: Yes

Heated: Yes
Finished: Yes
Enclosed: Yes
Contiguous: Yes
Permitted: Yes
Wet space: No
Addition: No
Conversion: No

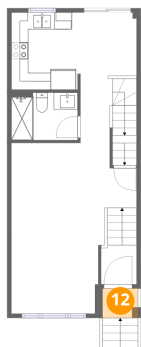
11 Floor 2 - Hall



Dimensions: 3'6" x 7'10"
Area: 59 sq. ft
Counted as living area: Yes

Heated: Yes
Finished: Yes
Enclosed: Yes
Contiguous: Yes
Permitted: Yes
Wet space: No
Addition: No
Conversion: No

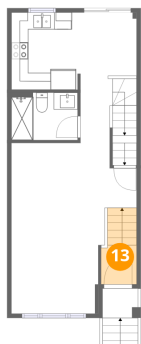
12 Floor 2 - Porch



Dimensions: 4'2" x 3'5"
Area: 14 sq. ft
Counted as living area: No

Heated: No
Finished: No
Enclosed: No
Contiguous: Yes
Permitted: Yes
Wet space: No
Addition: No
Conversion: No

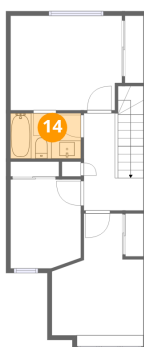
13 Floor 2 - Foyer



Dimensions: 4'2" x 4'7"
Area: 34 sq. ft
Counted as living area: Yes

Heated: Yes
Finished: Yes
Enclosed: Yes
Contiguous: Yes
Permitted: Yes
Wet space: No
Addition: No
Conversion: No

14 Floor 3 - Bath



Dimensions: 7'9" x 5'0"
Area: 39 sq. ft
Counted as living area: Yes

Heated: Yes
Finished: Yes
Enclosed: Yes
Contiguous: Yes
Permitted: Yes
Wet space: Yes
Addition: No
Conversion: No

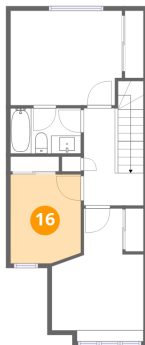
15 Floor 3 - Primary Bedroom



Dimensions: 12'4" x 10'5"
Area: 127 sq. ft
Counted as living area: Yes

Heated: Yes
Finished: Yes
Enclosed: Yes
Contiguous: Yes
Permitted: Yes
Wet space: No
Addition: No
Conversion: No

16 Floor 3 - Bedroom



Dimensions: 7'9" x 9'9"
Area: 75 sq. ft
Counted as living area: Yes

Heated: Yes
Finished: Yes
Enclosed: Yes
Contiguous: Yes
Permitted: Yes
Wet space: No
Addition: No
Conversion: No

17 Floor 3 - Hall



Dimensions: 6'7" x 10'9"
Area: 80 sq. ft
Counted as living area: Yes

Heated: Yes
Finished: Yes
Enclosed: Yes
Contiguous: Yes
Permitted: Yes
Wet space: No
Addition: No
Conversion: No

18 Floor 3 - Bedroom



Dimensions: 10'2" x 13'6"

Area: 114 sq. ft

Counted as living area: Yes

Heated: Yes

Finished: Yes

Enclosed: Yes

Contiguous: Yes

Permitted: Yes

Wet space: No

Addition: No

Conversion: No