

Home data report

2406 Wycliffe Avenue Southwest, South Roanoke, Roanoke, Roanoke city, Virginia, United States, 24014



Total Area: 3323 sq. ft

Basement: 683 sq. ft, 1st Floor: 1205 sq. ft, 2nd Floor: 1059 sq. ft, 3rd Floor: 376 sq. ft
Excluded: Kitchen 130 sq. ft, Mudroom 91 sq. ft, Hall 42 sq. ft, Utility 32 sq. ft, Deck 577 sq. ft, Porch 44 sq. ft, Attic 308 sq. ft, Walls: 276 sq. ft

Property summary

 **4** Floors

 **4** Bedrooms

 **4** Bathrooms

 **1** Half baths

2406 Wycliffe Avenue Southwest, South Roanoke, Roanoke, Roanoke city, Virginia, United States, 24014



Room dimensions

Floor 1 Below grade

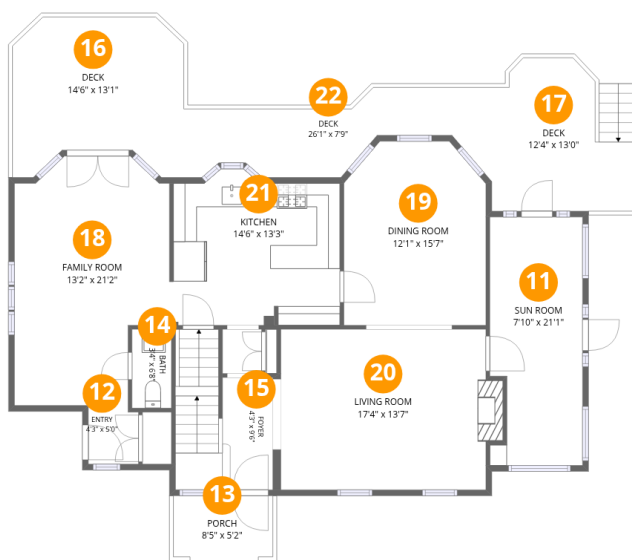
Total:683sqft

Excluded: 422sqft

#		Dimensions	sqft	Counted as living area
1	Hall	3'11" x 9'7"	35 sq. ft	No
2	Bath	4'10" x 12'0"	58 sq. ft	Yes
3	Sitting Room	13'8" x 13'0"	178 sq. ft	Yes
4	Hall	8'6" x 12'0"	66 sq. ft	Yes
5	Reading Area	12'1" x 15'7"	177 sq. ft	Yes
6	Deck	18'7" x 6'3"	127 sq. ft	No
7	Kitchen	13'4" x 12'2"	127 sq. ft	No
8	Utility	3'10" x 8'2"	32 sq. ft	No
9	Mudroom	8'8" x 9'8"	84 sq. ft	No
10	Hall	8'1" x 13'7"	108 sq. ft	Yes

Home data report

2406 Wycliffe Avenue Southwest, South Roanoke, Roanoke, Roanoke city, Virginia, United States, 24014



Room dimensions

Floor 2

Total:1205sqft Excluded: 494sqft

#		Dimensions	sqft	Counted as living area
11	Sun Room	7'10" x 21'11"	157 sq. ft	Yes
12	Entry	4'3" x 5'0"	21 sq. ft	Yes
13	Porch	8'5" x 5'2"	44 sq. ft	No
14	Bath	3'4" x 6'8"	22 sq. ft	Yes
15	Foyer	4'3" x 9'6"	93 sq. ft	Yes
16	Deck	14'6" x 13'1"	172 sq. ft	No
17	Deck	12'4" x 13'0"	145 sq. ft	No
18	Family Room	13'2" x 21'2"	242 sq. ft	Yes
19	Dining Room	12'1" x 15'7"	177 sq. ft	Yes
20	Living Room	17'4" x 13'7"	244 sq. ft	Yes
21	Kitchen	14'6" x 13'3"	175 sq. ft	Yes

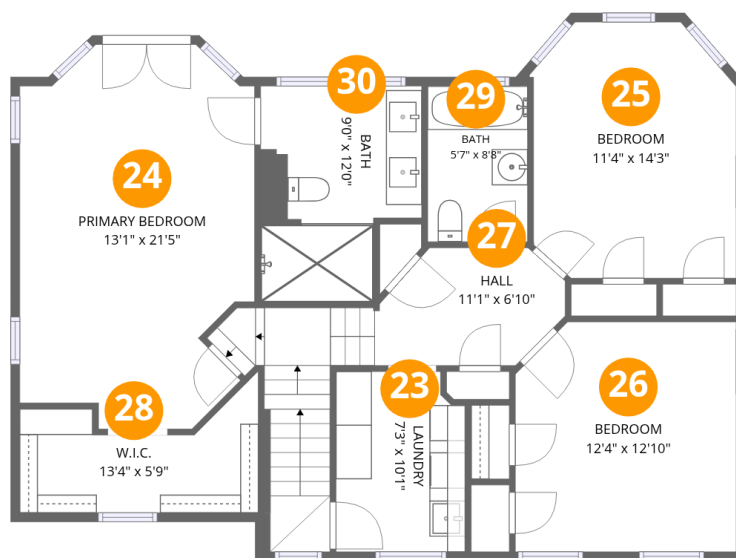
Home data report

**2406 Wycliffe Avenue Southwest, South Roanoke, Roanoke,
Roanoke city, Virginia, United States, 24014**

#		Dimensions	sqft	Counted as living area
22	Deck	26'1" x 7'9"	133 sq. ft	No

Home data report

2406 Wycliffe Avenue Southwest, South Roanoke, Roanoke, Roanoke city, Virginia, United States, 24014



Room dimensions

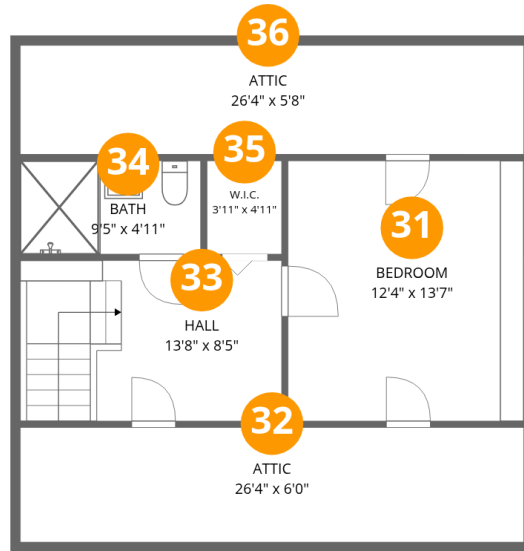
Floor 3

Total:1059sqft Excluded: 0sqft

#		Dimensions	sqft	Counted as living area
23	Laundry	7'3" x 10'1"	70 sq. ft	Yes
24	Primary Bedroom	13'1" x 21'5"	248 sq. ft	Yes
25	Bedroom	11'4" x 14'3"	151 sq. ft	Yes
26	Bedroom	12'4" x 12'10"	154 sq. ft	Yes
27	Hall	11'1" x 6'10"	123 sq. ft	Yes
28	W.I.C.	13'4" x 5'9"	70 sq. ft	Yes
29	Bath	5'7" x 8'8"	49 sq. ft	Yes
30	Bath	9'0" x 12'0"	95 sq. ft	Yes

Home data report

2406 Wycliffe Avenue Southwest, South Roanoke, Roanoke,
Roanoke city, Virginia, United States, 24014



Room dimensions

Floor 4

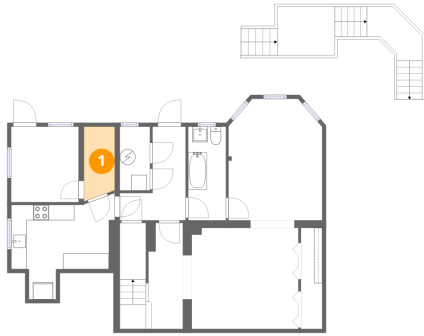
Total:376sqft

Excluded: 308sqft

#		Dimensions	sqft	Counted as living area
31	Bedroom	12'4" x 13'7"	168 sq. ft	Yes
32	Attic	26'4" x 6'0"	158 sq. ft	No
33	Hall	13'8" x 8'5"	115 sq. ft	Yes
34	Bath	9'5" x 4'11"	46 sq. ft	Yes
35	W.I.C.	3'11" x 4'11"	19 sq. ft	Yes
36	Attic	26'4" x 5'8"	150 sq. ft	No

2406 Wycliffe Avenue Southwest, South Roanoke, Roanoke,
Roanoke city, Virginia, United States, 24014

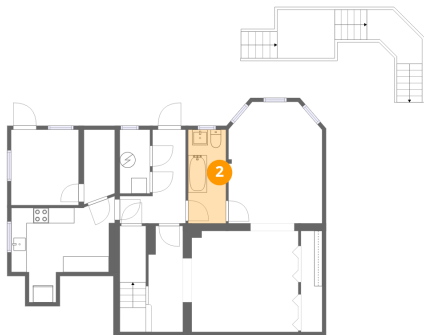
1 Floor 1 - Hall



Dimensions: 3'11" x 9'7"
Area: 35 sq. ft
Counted as living area: No

Heated: Yes
Finished: No
Enclosed: Yes
Contiguous: Yes
Permitted: Yes
Wet space: No
Addition: No
Conversion: No

2 Floor 1 - Bath

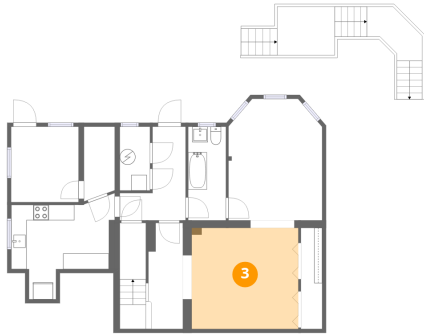


Dimensions: 4'10" x 12'0"
Area: 58 sq. ft
Counted as living area: Yes

Heated: Yes
Finished: Yes
Enclosed: Yes
Contiguous: Yes
Permitted: Yes
Wet space: Yes
Addition: No
Conversion: No

2406 Wycliffe Avenue Southwest, South Roanoke, Roanoke,
Roanoke city, Virginia, United States, 24014

3 Floor 1 - Sitting Room



Dimensions: 13'8" x 13'0"
Area: 178 sq. ft
Counted as living area: Yes

Heated: Yes
Finished: Yes
Enclosed: Yes
Contiguous: Yes
Permitted: Yes
Wet space: No
Addition: No
Conversion: No

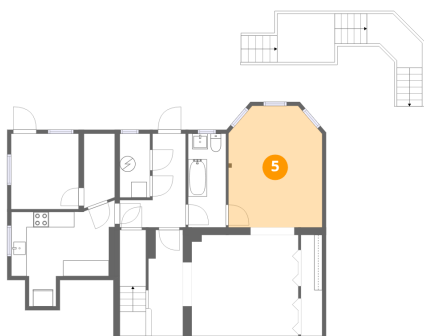
4 Floor 1 - Hall



Dimensions: 8'6" x 12'0"
Area: 66 sq. ft
Counted as living area: Yes

Heated: Yes
Finished: Yes
Enclosed: Yes
Contiguous: Yes
Permitted: Yes
Wet space: No
Addition: No
Conversion: No

5 Floor 1 - Reading Area

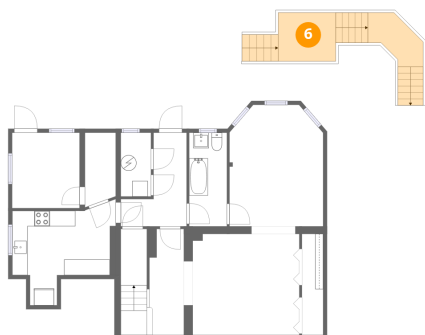


Dimensions: 12'1" x 15'7"
Area: 177 sq. ft
Counted as living area: Yes

Heated: Yes
Finished: Yes
Enclosed: Yes
Contiguous: Yes
Permitted: Yes
Wet space: No
Addition: No
Conversion: No

2406 Wycliffe Avenue Southwest, South Roanoke, Roanoke,
Roanoke city, Virginia, United States, 24014

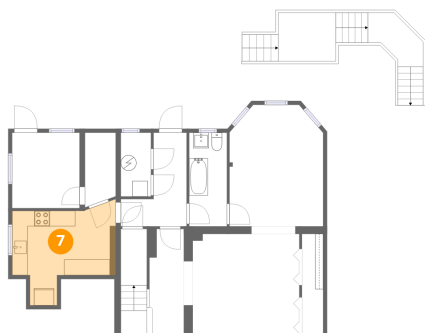
6 Floor 1 - Deck



Dimensions: 18'7" x 6'3"
Area: 127 sq. ft
Counted as living area: No

Heated: No
Finished: No
Enclosed: No
Contiguous: Yes
Permitted: Yes
Wet space: No
Addition: No
Conversion: No

7 Floor 1 - Kitchen



Dimensions: 13'4" x 12'2"
Area: 127 sq. ft
Counted as living area: No

Heated: Yes
Finished: No
Enclosed: Yes
Contiguous: Yes
Permitted: Yes
Wet space: No
Addition: No
Conversion: No

8 Floor 1 - Utility



Dimensions: 3'10" x 8'2"
Area: 32 sq. ft
Counted as living area: No

Heated: Yes
Finished: No
Enclosed: Yes
Contiguous: Yes
Permitted: Yes
Wet space: No
Addition: No
Conversion: No

2406 Wycliffe Avenue Southwest, South Roanoke, Roanoke,
Roanoke city, Virginia, United States, 24014

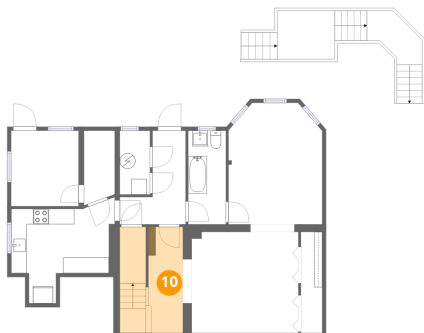
9 Floor 1 - Mudroom



Dimensions: 8'8" x 9'8"
Area: 84 sq. ft
Counted as living area: No

Heated: Yes
Finished: No
Enclosed: Yes
Contiguous: Yes
Permitted: Yes
Wet space: No
Addition: No
Conversion: No

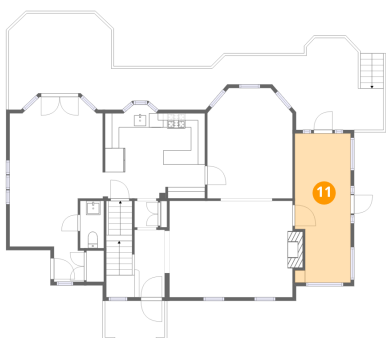
10 Floor 1 - Hall



Dimensions: 8'1" x 13'7"
Area: 108 sq. ft
Counted as living area: Yes

Heated: Yes
Finished: Yes
Enclosed: Yes
Contiguous: Yes
Permitted: Yes
Wet space: No
Addition: No
Conversion: No

11 Floor 2 - Sun Room

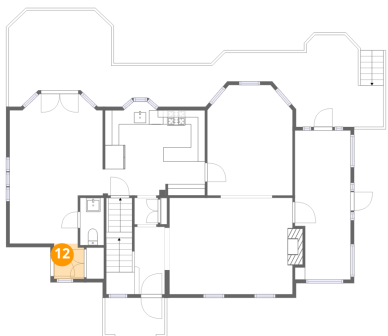


Dimensions: 7'10" x 21'1"
Area: 157 sq. ft
Counted as living area: Yes

Heated: Yes
Finished: Yes
Enclosed: Yes
Contiguous: Yes
Permitted: Yes
Wet space: No
Addition: No
Conversion: No

2406 Wycliffe Avenue Southwest, South Roanoke, Roanoke,
Roanoke city, Virginia, United States, 24014

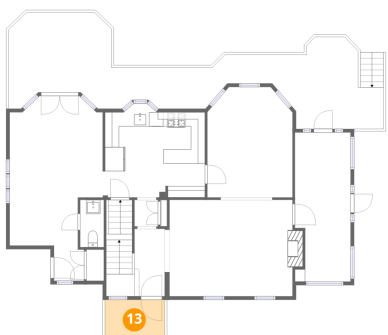
12 Floor 2 - Entry



Dimensions: 4'3" x 5'0"
Area: 21 sq. ft
Counted as living area: Yes

Heated: Yes
Finished: Yes
Enclosed: Yes
Contiguous: Yes
Permitted: Yes
Wet space: No
Addition: No
Conversion: No

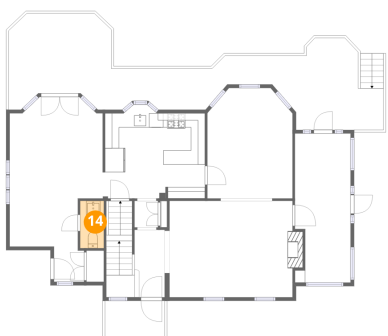
13 Floor 2 - Porch



Dimensions: 8'5" x 5'2"
Area: 44 sq. ft
Counted as living area: No

Heated: No
Finished: No
Enclosed: No
Contiguous: Yes
Permitted: Yes
Wet space: No
Addition: No
Conversion: No

14 Floor 2 - Bath

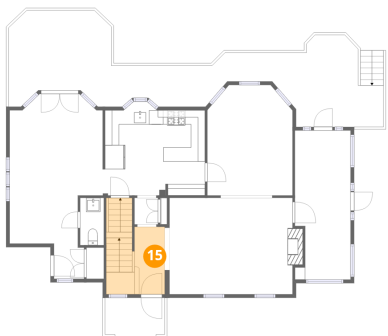


Dimensions: 3'4" x 6'8"
Area: 22 sq. ft
Counted as living area: Yes

Heated: Yes
Finished: Yes
Enclosed: Yes
Contiguous: Yes
Permitted: Yes
Wet space: Yes
Addition: No
Conversion: No

2406 Wycliffe Avenue Southwest, South Roanoke, Roanoke,
Roanoke city, Virginia, United States, 24014

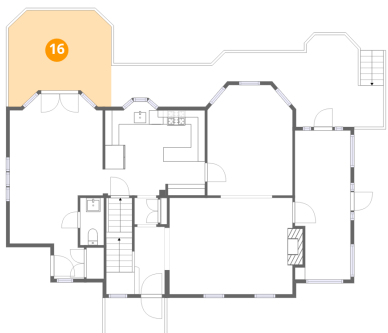
15 Floor 2 - Foyer



Dimensions: 4'3" x 9'6"
Area: 93 sq. ft
Counted as living area: Yes

Heated: Yes
Finished: Yes
Enclosed: Yes
Contiguous: Yes
Permitted: Yes
Wet space: No
Addition: No
Conversion: No

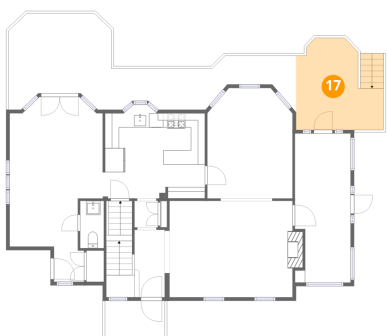
16 Floor 2 - Deck



Dimensions: 14'6" x 13'1"
Area: 172 sq. ft
Counted as living area: No

Heated: No
Finished: No
Enclosed: No
Contiguous: Yes
Permitted: Yes
Wet space: No
Addition: No
Conversion: No

17 Floor 2 - Deck

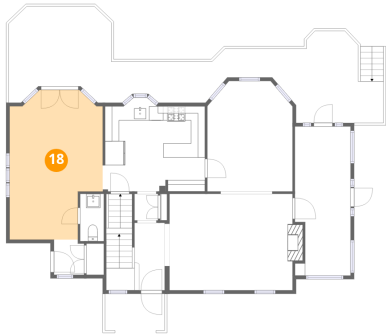


Dimensions: 12'4" x 13'0"
Area: 145 sq. ft
Counted as living area: No

Heated: No
Finished: No
Enclosed: No
Contiguous: Yes
Permitted: Yes
Wet space: No
Addition: No
Conversion: No

2406 Wycliffe Avenue Southwest, South Roanoke, Roanoke,
Roanoke city, Virginia, United States, 24014

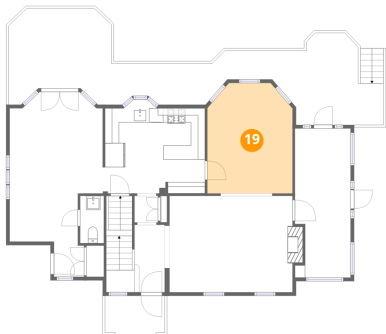
18 Floor 2 - Family Room



Dimensions: 13'2" x 21'2"
Area: 242 sq. ft
Counted as living area: Yes

Heated: Yes
Finished: Yes
Enclosed: Yes
Contiguous: Yes
Permitted: Yes
Wet space: No
Addition: No
Conversion: No

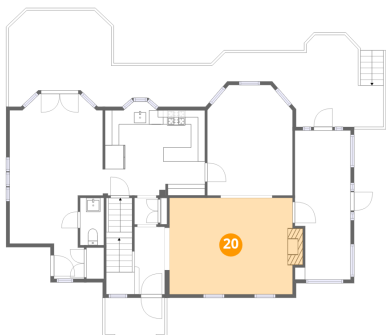
19 Floor 2 - Dining Room



Dimensions: 12'1" x 15'7"
Area: 177 sq. ft
Counted as living area: Yes

Heated: Yes
Finished: Yes
Enclosed: Yes
Contiguous: Yes
Permitted: Yes
Wet space: No
Addition: No
Conversion: No

20 Floor 2 - Living Room

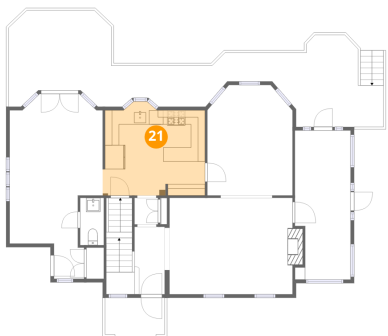


Dimensions: 17'4" x 13'7"
Area: 244 sq. ft
Counted as living area: Yes

Heated: Yes
Finished: Yes
Enclosed: Yes
Contiguous: Yes
Permitted: Yes
Wet space: No
Addition: No
Conversion: No

2406 Wycliffe Avenue Southwest, South Roanoke, Roanoke,
Roanoke city, Virginia, United States, 24014

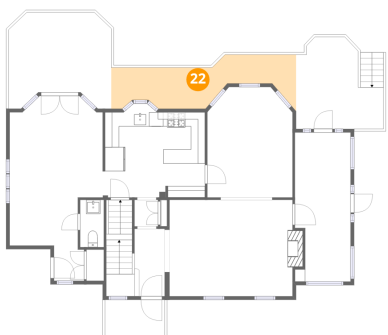
21 Floor 2 - Kitchen



Dimensions: 14'6" x 13'3"
Area: 175 sq. ft
Counted as living area: Yes

Heated: Yes
Finished: Yes
Enclosed: Yes
Contiguous: Yes
Permitted: Yes
Wet space: No
Addition: No
Conversion: No

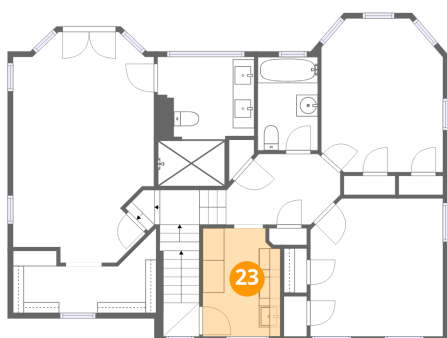
22 Floor 2 - Deck



Dimensions: 26'1" x 7'9"
Area: 133 sq. ft
Counted as living area: No

Heated: No
Finished: No
Enclosed: No
Contiguous: Yes
Permitted: Yes
Wet space: No
Addition: No
Conversion: No

23 Floor 3 - Laundry

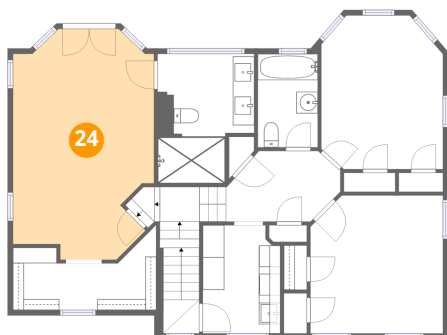


Dimensions: 7'3" x 10'1"
Area: 70 sq. ft
Counted as living area: Yes

Heated: Yes
Finished: Yes
Enclosed: Yes
Contiguous: Yes
Permitted: Yes
Wet space: No
Addition: No
Conversion: No

2406 Wycliffe Avenue Southwest, South Roanoke, Roanoke, Roanoke city, Virginia, United States, 24014

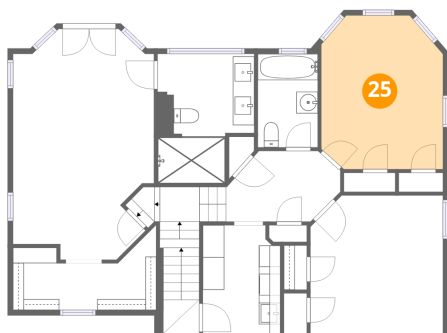
24 Floor 3 - Primary Bedroom



Dimensions: 13'1" x 21'5"
Area: 248 sq. ft
Counted as living area: Yes

Heated: Yes
Finished: Yes
Enclosed: Yes
Contiguous: Yes
Permitted: Yes
Wet space: No
Addition: No
Conversion: No

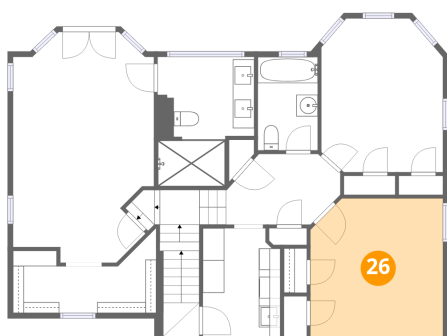
25 Floor 3 - Bedroom



Dimensions: 11'4" x 14'3"
Area: 151 sq. ft
Counted as living area: Yes

Heated: Yes
Finished: Yes
Enclosed: Yes
Contiguous: Yes
Permitted: Yes
Wet space: No
Addition: No
Conversion: No

26 Floor 3 - Bedroom

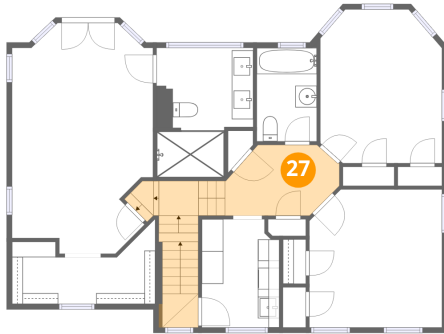


Dimensions: 12'4" x 12'10"
Area: 154 sq. ft
Counted as living area: Yes

Heated: Yes
Finished: Yes
Enclosed: Yes
Contiguous: Yes
Permitted: Yes
Wet space: No
Addition: No
Conversion: No

2406 Wycliffe Avenue Southwest, South Roanoke, Roanoke,
Roanoke city, Virginia, United States, 24014

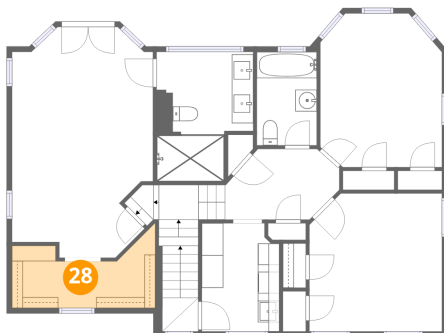
27 Floor 3 - Hall



Dimensions: 11'1" x 6'10"
Area: 123 sq. ft
Counted as living area: Yes

Heated: Yes
Finished: Yes
Enclosed: Yes
Contiguous: Yes
Permitted: Yes
Wet space: No
Addition: No
Conversion: No

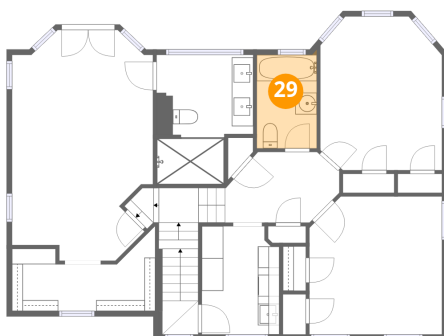
28 Floor 3 - W.I.C.



Dimensions: 13'4" x 5'9"
Area: 70 sq. ft
Counted as living area: Yes

Heated: Yes
Finished: Yes
Enclosed: Yes
Contiguous: Yes
Permitted: Yes
Wet space: No
Addition: No
Conversion: No

29 Floor 3 - Bath

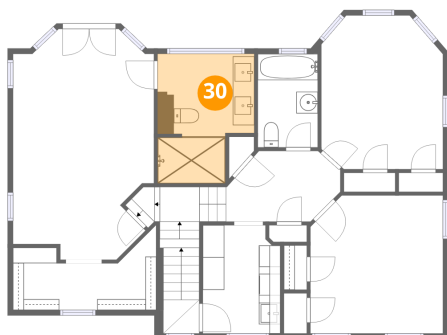


Dimensions: 5'7" x 8'8"
Area: 49 sq. ft
Counted as living area: Yes

Heated: Yes
Finished: Yes
Enclosed: Yes
Contiguous: Yes
Permitted: Yes
Wet space: Yes
Addition: No
Conversion: No

2406 Wycliffe Avenue Southwest, South Roanoke, Roanoke,
Roanoke city, Virginia, United States, 24014

30 Floor 3 - Bath



Dimensions: 9'0" x 12'0"
Area: 95 sq. ft
Counted as living area: Yes

Heated: Yes
Finished: Yes
Enclosed: Yes
Contiguous: Yes
Permitted: Yes
Wet space: Yes
Addition: No
Conversion: No

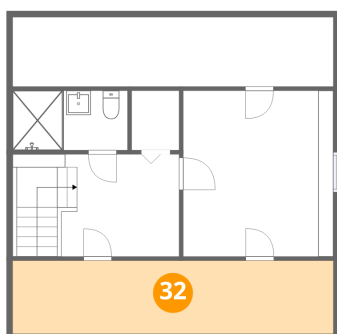
31 Floor 4 - Bedroom



Dimensions: 12'4" x 13'7"
Area: 168 sq. ft
Counted as living area: Yes

Heated: Yes
Finished: Yes
Enclosed: Yes
Contiguous: Yes
Permitted: Yes
Wet space: No
Addition: No
Conversion: No

32 Floor 4 - Attic

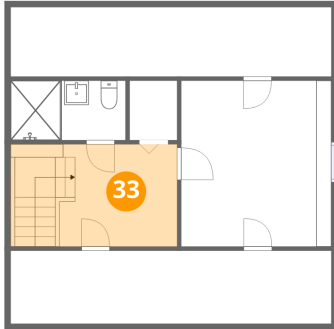


Dimensions: 26'4" x 6'0"
Area: 158 sq. ft
Counted as living area: No

Heated: No
Finished: No
Enclosed: Yes
Contiguous: Yes
Permitted: Yes
Wet space: No
Addition: No
Conversion: No

2406 Wycliffe Avenue Southwest, South Roanoke, Roanoke,
Roanoke city, Virginia, United States, 24014

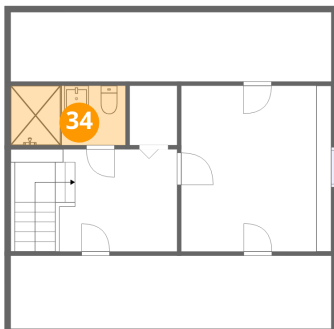
33 Floor 4 - Hall



Dimensions: 13'8" x 8'5"
Area: 115 sq. ft
Counted as living area: Yes

Heated: Yes
Finished: Yes
Enclosed: Yes
Contiguous: Yes
Permitted: Yes
Wet space: No
Addition: No
Conversion: No

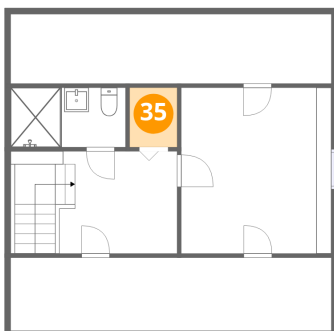
34 Floor 4 - Bath



Dimensions: 9'5" x 4'11"
Area: 46 sq. ft
Counted as living area: Yes

Heated: Yes
Finished: Yes
Enclosed: Yes
Contiguous: Yes
Permitted: Yes
Wet space: Yes
Addition: No
Conversion: No

35 Floor 4 - W.I.C.

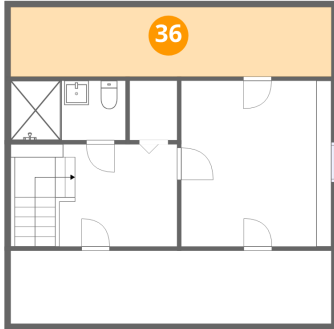


Dimensions: 3'11" x 4'11"
Area: 19 sq. ft
Counted as living area: Yes

Heated: Yes
Finished: Yes
Enclosed: Yes
Contiguous: Yes
Permitted: Yes
Wet space: No
Addition: No
Conversion: No

2406 Wycliffe Avenue Southwest, South Roanoke, Roanoke,
Roanoke city, Virginia, United States, 24014

36 Floor 4 - Attic



Dimensions: 26'4" x 5'8"
Area: 150 sq. ft
Counted as living area: No

Heated: No
Finished: No
Enclosed: Yes
Contiguous: Yes
Permitted: Yes
Wet space: No
Addition: No
Conversion: No