

23419 Tamarack Lane

Maple Ridge BC V2W 1A8

Lower Level Area: 580 SQ.FT.
 Main Level Area: 1,074 SQ.FT.
 Upper Level Area: 810 SQ.FT.
Total Area 2,464 SQ.FT.

3



BEDROOMS

3

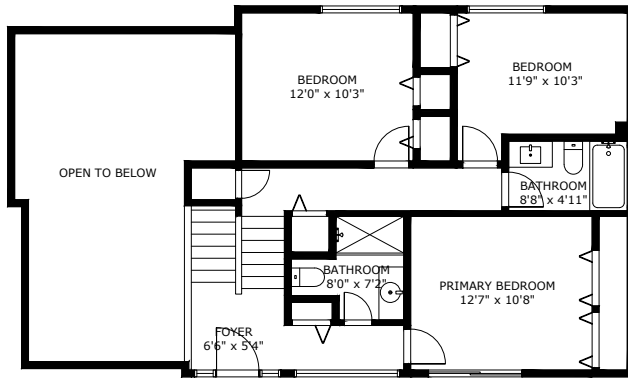


BATHROOMS

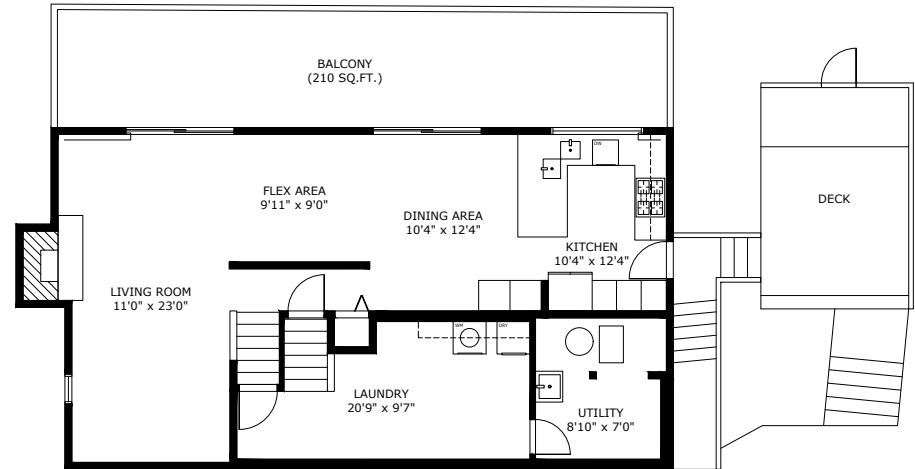
2,464



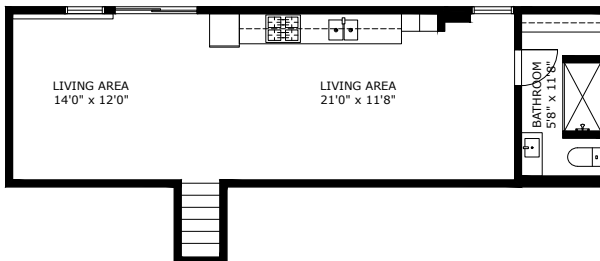
TOTAL SQ.FT.



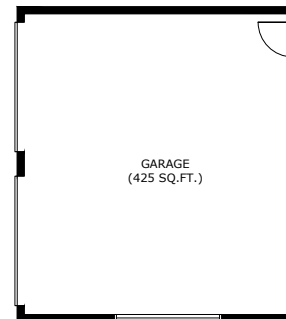
Upper Level Area:
 Ceiling Height: 11'7"-13'2"



Main Level Area:
 Ceiling Height: 8'0"-18'0"



Lower Level Area:
 Ceiling Height: 8'0"



23419 TAMARACK LANE MAPLE RIDGE BC V2W 1A8

Measurements are approximate and may not be to scale.
 The floor plan illustration is not suitable for construction/architectural purposes.
 This communication is not intended to cause or induce breach of an existing agency agreement



Professionally measured by 3D Immersive Marketing Ltd.
 Lead Floor Planner: *Sara Alexander*
 Quality Assurance: *Dianne Graham*