



**Total Area: 2851 sq. ft**

Basement: 457 sq. ft, 1st Floor: 1334 sq. ft, 2nd Floor: 1060 sq. ft

Excluded: Utility 90 sq. ft, Courtyard 164 sq. ft, Fireplace 9 sq. ft, Balcony 72 sq. ft, Open to below 106 sq. ft, Walls: 213 sq. ft

### Property summary

 **3** Floors

 **3** Bedrooms

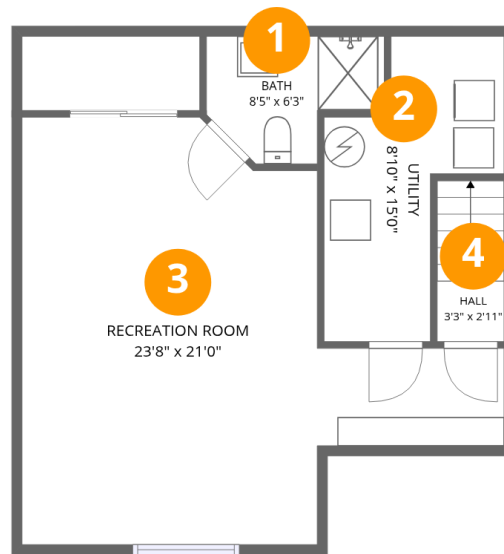
 **3** Bathrooms

Home data report

**148 S Locust St, Denver, CO, US**

 **1**  
Half baths

 **1**  
Garages



## Room dimensions

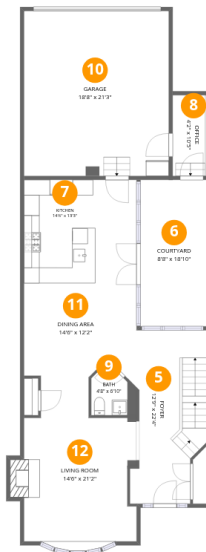
Floor 1 Below grade

Total: 457 sqft Excluded: 90 sqft

#		Dimensions	sqft	Counted as living area
1	Bath	8'5" x 6'3"	43 sq. ft	Yes
2	Utility	8'10" x 15'0"	90 sq. ft	No
3	Recreation Room	23'8" x 21'0"	337 sq. ft	Yes
4	Hall	3'3" x 2'11"	26 sq. ft	Yes

# Home data report

## 148 S Locust St, Denver, CO, US



### Room dimensions

Floor 2

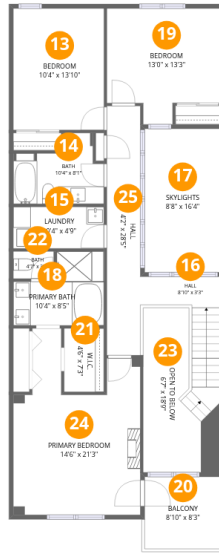
Total:1334sqft

Excluded: 173sqft

#		Dimensions	sqft	Counted as living area
5	Foyer	12'9" x 22'4"	204 sq. ft	Yes
6	Courtyard	8'8" x 18'10"	164 sq. ft	No
7	Kitchen	14'6" x 13'3"	193 sq. ft	Yes
8	Office	4'2" x 10'5"	47 sq. ft	Yes
9	Bath	4'8" x 6'10"	31 sq. ft	Yes
10	Garage	18'8" x 21'3"	396 sq. ft	Yes
11	Dining Area	14'6" x 12'2"	157 sq. ft	Yes
12	Living Room	14'6" x 21'2"	273 sq. ft	Yes

Home data report

148 S Locust St, Denver, CO, US



Room dimensions

Floor 3

Total:1060sqft

Excluded: 178sqft

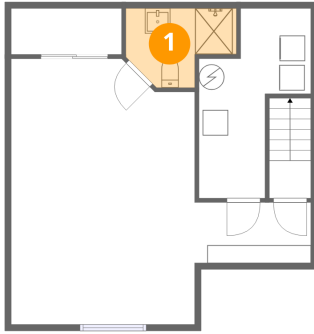
#		Dimensions	sqft	Counted as living area
13	Bedroom	10'4" x 13'10"	144 sq. ft	Yes
14	Bath	10'4" x 8'1"	66 sq. ft	Yes
15	Laundry	10'4" x 4'9"	49 sq. ft	Yes
16	Hall	8'10" x 3'3"	92 sq. ft	Yes
17	Skylights	8'8" x 16'4"	142 sq. ft	No
18	Primary Bath	10'4" x 8'5"	70 sq. ft	Yes
19	Bedroom	13'0" x 13'3"	148 sq. ft	Yes
20	Balcony	8'10" x 8'3"	72 sq. ft	No
21	W.I.C.	4'6" x 7'3"	33 sq. ft	Yes
22	Bath	4'7" x 3'1"	14 sq. ft	Yes
23	Open To Below	6'7" x 18'9"	106 sq. ft	No

Home data report

**148 S Locust St,Denver,CO,US**

#		Dimensions	sqft	Counted as living area
24	Primary Bedroom	14'6" x 21'3"	240 sq. ft	Yes
25	Hall	4'2" x 28'5"	112 sq. ft	Yes

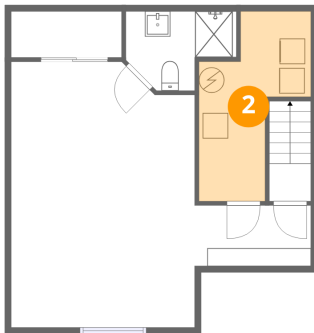
## 1 Floor 1 - Bath



Dimensions: 8'5" x 6'3"  
Area: 43 sq. ft  
Counted as living area: Yes

Heated: Yes  
Finished: Yes  
Enclosed: Yes  
Contiguous: Yes  
Permitted: Yes  
Wet space: Yes  
Addition: No  
Conversion: No

## 2 Floor 1 - Utility



Dimensions: 8'10" x 15'0"  
Area: 90 sq. ft  
Counted as living area: No

Heated: Yes  
Finished: No  
Enclosed: Yes  
Contiguous: Yes  
Permitted: Yes  
Wet space: No  
Addition: No  
Conversion: No

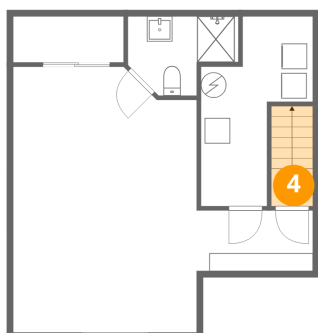
### 3 Floor 1 - Recreation Room



Dimensions: 23'8" x 21'0"  
Area: 337 sq. ft  
Counted as living area: Yes

Heated: Yes  
Finished: Yes  
Enclosed: Yes  
Contiguous: Yes  
Permitted: Yes  
Wet space: No  
Addition: No  
Conversion: No

### 4 Floor 1 - Hall



Dimensions: 3'3" x 2'11"  
Area: 26 sq. ft  
Counted as living area: Yes

Heated: Yes  
Finished: Yes  
Enclosed: Yes  
Contiguous: Yes  
Permitted: Yes  
Wet space: No  
Addition: No  
Conversion: No

### 5 Floor 2 - Foyer



Dimensions: 12'9" x 22'4"  
Area: 204 sq. ft  
Counted as living area: Yes

Heated: Yes  
Finished: Yes  
Enclosed: Yes  
Contiguous: Yes  
Permitted: Yes  
Wet space: No  
Addition: No  
Conversion: No

## 6 Floor 2 - Courtyard



Dimensions: 8'8" x 18'10"  
Area: 164 sq. ft  
Counted as living area: No

Heated: No  
Finished: No  
Enclosed: No  
Contiguous: Yes  
Permitted: No  
Wet space: No  
Addition: No  
Conversion: No

## 7 Floor 2 - Kitchen



Dimensions: 14'6" x 13'3"  
Area: 193 sq. ft  
Counted as living area: Yes

Heated: Yes  
Finished: Yes  
Enclosed: Yes  
Contiguous: Yes  
Permitted: Yes  
Wet space: No  
Addition: No  
Conversion: No

## 8 Floor 2 - Office



Dimensions: 4'2" x 10'5"  
Area: 47 sq. ft  
Counted as living area: Yes

Heated: Yes  
Finished: Yes  
Enclosed: Yes  
Contiguous: Yes  
Permitted: Yes  
Wet space: No  
Addition: No  
Conversion: No

**9** Floor 2 - Bath

---



Dimensions: 4'8" x 6'10"  
Area: 31 sq. ft  
Counted as living area: Yes

Heated: Yes  
Finished: Yes  
Enclosed: Yes  
Contiguous: Yes  
Permitted: Yes  
Wet space: Yes  
Addition: No  
Conversion: No

**10** Floor 2 - Garage

---



Dimensions: 18'8" x 21'3"  
Area: 396 sq. ft  
Counted as living area: No

Heated: No  
Finished: Yes  
Enclosed: Yes  
Contiguous: Yes  
Permitted: Yes  
Wet space: No  
Addition: No  
Conversion: No

**11** Floor 2 - Dining Area

---



Dimensions: 14'6" x 12'2"  
Area: 157 sq. ft  
Counted as living area: Yes

Heated: Yes  
Finished: Yes  
Enclosed: Yes  
Contiguous: Yes  
Permitted: Yes  
Wet space: No  
Addition: No  
Conversion: No

## 12 Floor 2 - Living Room



Dimensions: 14'6" x 21'2"  
Area: 273 sq. ft  
Counted as living area: Yes

Heated: Yes  
Finished: Yes  
Enclosed: Yes  
Contiguous: Yes  
Permitted: Yes  
Wet space: No  
Addition: No  
Conversion: No

## 13 Floor 3 - Bedroom



Dimensions: 10'4" x 13'10"  
Area: 144 sq. ft  
Counted as living area: Yes

Heated: Yes  
Finished: Yes  
Enclosed: Yes  
Contiguous: Yes  
Permitted: Yes  
Wet space: No  
Addition: No  
Conversion: No

## 14 Floor 3 - Bath



Dimensions: 10'4" x 8'1"  
Area: 66 sq. ft  
Counted as living area: Yes

Heated: Yes  
Finished: Yes  
Enclosed: Yes  
Contiguous: Yes  
Permitted: Yes  
Wet space: Yes  
Addition: No  
Conversion: No

### 15 Floor 3 - Laundry

---



Dimensions: 10'4" x 4'9"  
Area: 49 sq. ft  
Counted as living area: Yes

Heated: Yes  
Finished: Yes  
Enclosed: Yes  
Contiguous: Yes  
Permitted: Yes  
Wet space: No  
Addition: No  
Conversion: No

### 16 Floor 3 - Hall

---



Dimensions: 8'10" x 3'3"  
Area: 92 sq. ft  
Counted as living area: Yes

Heated: Yes  
Finished: Yes  
Enclosed: Yes  
Contiguous: Yes  
Permitted: Yes  
Wet space: No  
Addition: No  
Conversion: No

### 17 Floor 3 - Skylights

---



Dimensions: 8'8" x 16'4"  
Area: 142 sq. ft  
Counted as living area: No

Heated: No  
Finished: No  
Enclosed: No  
Contiguous: Yes  
Permitted: No  
Wet space: No  
Addition: No  
Conversion: No

### 18 Floor 3 - Primary Bath



Dimensions: 10'4" x 8'5"  
Area: 70 sq. ft  
Counted as living area: Yes

Heated: Yes  
Finished: Yes  
Enclosed: Yes  
Contiguous: Yes  
Permitted: Yes  
Wet space: Yes  
Addition: No  
Conversion: No

### 19 Floor 3 - Bedroom



Dimensions: 13'0" x 13'3"  
Area: 148 sq. ft  
Counted as living area: Yes

Heated: Yes  
Finished: Yes  
Enclosed: Yes  
Contiguous: Yes  
Permitted: Yes  
Wet space: No  
Addition: No  
Conversion: No

### 20 Floor 3 - Balcony



Dimensions: 8'10" x 8'3"  
Area: 72 sq. ft  
Counted as living area: No

Heated: No  
Finished: No  
Enclosed: No  
Contiguous: Yes  
Permitted: Yes  
Wet space: No  
Addition: No  
Conversion: No

**21** Floor 3 - W.I.C.

---



Dimensions: 4'6" x 7'3"  
Area: 33 sq. ft  
Counted as living area: Yes

Heated: Yes  
Finished: Yes  
Enclosed: Yes  
Contiguous: Yes  
Permitted: Yes  
Wet space: No  
Addition: No  
Conversion: No

**22** Floor 3 - Bath

---



Dimensions: 4'7" x 3'1"  
Area: 14 sq. ft  
Counted as living area: Yes

Heated: Yes  
Finished: Yes  
Enclosed: Yes  
Contiguous: Yes  
Permitted: Yes  
Wet space: Yes  
Addition: No  
Conversion: No

**23** Floor 3 - Open To Below

---



Dimensions: 6'7" x 18'9"  
Area: 106 sq. ft  
Counted as living area: No

Heated: No  
Finished: No  
Enclosed: No  
Contiguous: Yes  
Permitted: No  
Wet space: No  
Addition: No  
Conversion: No

### 24 Floor 3 - Primary Bedroom

---



Dimensions: 14'6" x 21'3"  
Area: 240 sq. ft  
Counted as living area: Yes

Heated: Yes  
Finished: Yes  
Enclosed: Yes  
Contiguous: Yes  
Permitted: Yes  
Wet space: No  
Addition: No  
Conversion: No

### 25 Floor 3 - Hall

---



Dimensions: 4'2" x 28'5"  
Area: 112 sq. ft  
Counted as living area: Yes

Heated: Yes  
Finished: Yes  
Enclosed: Yes  
Contiguous: Yes  
Permitted: Yes  
Wet space: No  
Addition: No  
Conversion: No