

Home data report

8007 Hillsboro Court S, Fort Collins, CO, US



Total Area: 2786 sq. ft

1st Floor: 727 sq. ft, 2nd Floor: 1160 sq. ft, 3rd Floor: 899 sq. ft

Excluded: Garage 641 sq. ft, Balcony 347 sq. ft, Fireplace 14 sq. ft, Open to below 525 sq. ft, Walls: 260 sq. ft

Property summary

 **3** Floors

 **3** Bedrooms

 **3** Bathrooms

Home data report

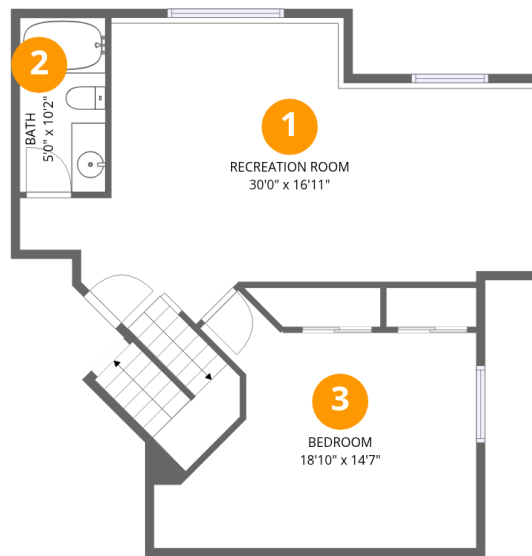
8007 Hillsboro Court S, Fort Collins, CO, US

 **1**
Half baths

 **1**
Garages

Home data report

8007 Hillsboro Court S, Fort Collins, CO, US



Room dimensions

Floor 1

Total: 727sqft Excluded: 0sqft

#		Dimensions	sqft	Counted as living area
1	Recreation Room	30'0" x 16'11"	419 sq. ft	Yes
2	Bath	5'0" x 10'2"	51 sq. ft	Yes
3	Bedroom	18'10" x 14'7"	206 sq. ft	Yes



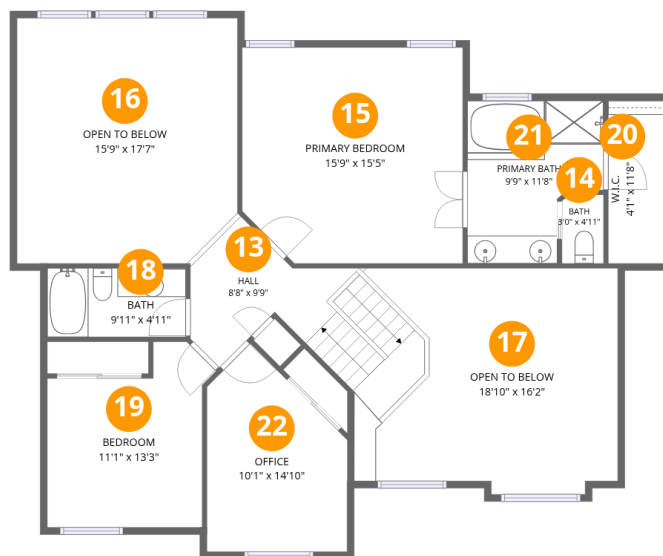
Room dimensions

Floor 2

Total: 1160sqft

Excluded: 1002sqft

#		Dimensions	sqft	Counted as living area
4	Dining Area	10'9" x 12'0"	127 sq. ft	Yes
5	Living Room	17'4" x 16'2"	233 sq. ft	Yes
6	Garage	33'6" x 19'5"	641 sq. ft	No
7	Balcony	27'5" x 15'3"	347 sq. ft	No
8	Kitchen	19'1" x 15'9"	298 sq. ft	Yes
9	Bath	5'0" x 5'9"	29 sq. ft	Yes
10	Laundry	7'7" x 5'9"	42 sq. ft	Yes
11	Hall	16'3" x 8'3"	104 sq. ft	Yes
12	Family Room	15'9" x 17'7"	294 sq. ft	Yes



Room dimensions

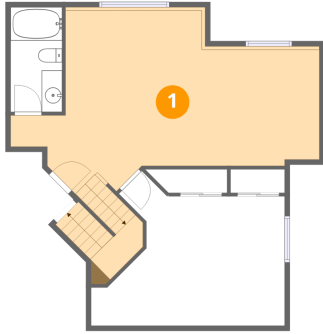
Floor 3

Total:899sqft

Excluded: 525sqft

#		Dimensions	sqft	Counted as living area
13	Hall	8'8" x 9'9"	122 sq. ft	Yes
14	Bath	3'0" x 4'11"	15 sq. ft	Yes
15	Primary Bedroom	15'9" x 15'5"	237 sq. ft	Yes
16	Open To Below	15'9" x 17'7"	270 sq. ft	No
17	Open To Below	18'10" x 16'2"	254 sq. ft	No
18	Bath	9'11" x 4'11"	49 sq. ft	Yes
19	Bedroom	11'1" x 13'3"	128 sq. ft	Yes
20	W.I.C.	4'1" x 11'8"	47 sq. ft	Yes
21	Primary Bath	9'9" x 11'8"	96 sq. ft	Yes
22	Office	10'1" x 14'10"	121 sq. ft	Yes

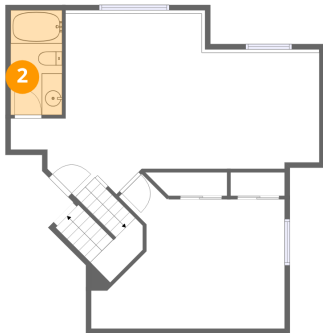
1 Floor 1 - Recreation Room



Dimensions: 30'0" x 16'11"
Area: 419 sq. ft
Counted as living area: Yes

Heated: Yes
Finished: Yes
Enclosed: Yes
Contiguous: Yes
Permitted: Yes
Wet space: No
Addition: No
Conversion: No

2 Floor 1 - Bath



Dimensions: 5'0" x 10'2"
Area: 51 sq. ft
Counted as living area: Yes

Heated: Yes
Finished: Yes
Enclosed: Yes
Contiguous: Yes
Permitted: Yes
Wet space: Yes
Addition: No
Conversion: No

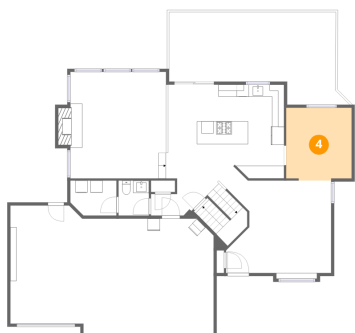
3 Floor 1 - Bedroom



Dimensions: 18'10" x 14'7"
Area: 206 sq. ft
Counted as living area: Yes

Heated: Yes
Finished: Yes
Enclosed: Yes
Contiguous: Yes
Permitted: Yes
Wet space: No
Addition: No
Conversion: No

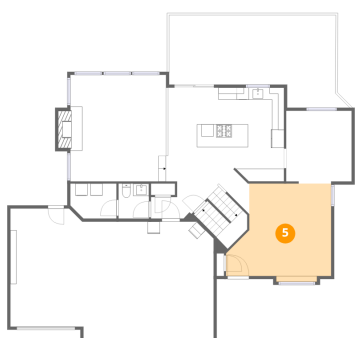
4 Floor 2 - Dining Area



Dimensions: 10'9" x 12'0"
Area: 127 sq. ft
Counted as living area: Yes

Heated: Yes
Finished: Yes
Enclosed: Yes
Contiguous: Yes
Permitted: Yes
Wet space: No
Addition: No
Conversion: No

5 Floor 2 - Living Room



Dimensions: 17'4" x 16'2"
Area: 233 sq. ft
Counted as living area: Yes

Heated: Yes
Finished: Yes
Enclosed: Yes
Contiguous: Yes
Permitted: Yes
Wet space: No
Addition: No
Conversion: No

6 Floor 2 - Garage



Dimensions: 33'6" x 19'5"
Area: 641 sq. ft
Counted as living area: No

Heated: No
Finished: No
Enclosed: Yes
Contiguous: Yes
Permitted: Yes
Wet space: No
Addition: No
Conversion: No

7 Floor 2 - Balcony



Dimensions: 27'5" x 15'3"
Area: 347 sq. ft
Counted as living area: No

Heated: No
Finished: No
Enclosed: No
Contiguous: Yes
Permitted: Yes
Wet space: No
Addition: No
Conversion: No

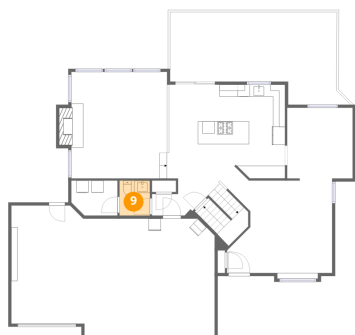
8 Floor 2 - Kitchen



Dimensions: 19'1" x 15'9"
Area: 298 sq. ft
Counted as living area: Yes

Heated: Yes
Finished: Yes
Enclosed: Yes
Contiguous: Yes
Permitted: Yes
Wet space: No
Addition: No
Conversion: No

9 Floor 2 - Bath



Dimensions: 5'0" x 5'9"
Area: 29 sq. ft
Counted as living area: Yes

Heated: Yes
Finished: Yes
Enclosed: Yes
Contiguous: Yes
Permitted: Yes
Wet space: Yes
Addition: No
Conversion: No

10 Floor 2 - Laundry



Dimensions: 7'7" x 5'9"
Area: 42 sq. ft
Counted as living area: Yes

Heated: Yes
Finished: Yes
Enclosed: Yes
Contiguous: Yes
Permitted: Yes
Wet space: No
Addition: No
Conversion: No

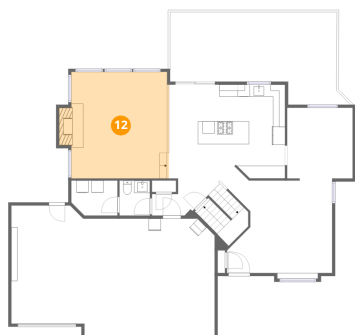
11 Floor 2 - Hall



Dimensions: 16'3" x 8'3"
Area: 104 sq. ft
Counted as living area: Yes

Heated: Yes
Finished: Yes
Enclosed: Yes
Contiguous: Yes
Permitted: Yes
Wet space: No
Addition: No
Conversion: No

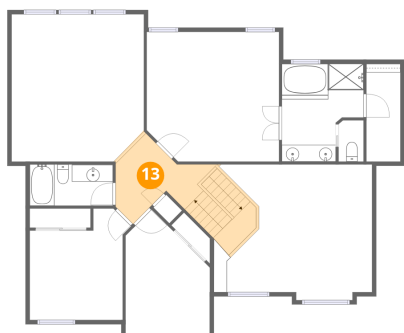
12 Floor 2 - Family Room



Dimensions: 15'9" x 17'7"
Area: 294 sq. ft
Counted as living area: Yes

Heated: Yes
Finished: Yes
Enclosed: Yes
Contiguous: Yes
Permitted: Yes
Wet space: No
Addition: No
Conversion: No

13 Floor 3 - Hall



Dimensions: 8'8" x 9'9"
Area: 122 sq. ft
Counted as living area: Yes

Heated: Yes
Finished: Yes
Enclosed: Yes
Contiguous: Yes
Permitted: Yes
Wet space: No
Addition: No
Conversion: No

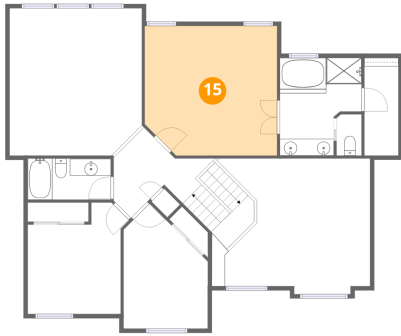
14 Floor 3 - Bath



Dimensions: 3'0" x 4'11"
Area: 15 sq. ft
Counted as living area: Yes

Heated: Yes
Finished: Yes
Enclosed: Yes
Contiguous: Yes
Permitted: Yes
Wet space: Yes
Addition: No
Conversion: No

15 Floor 3 - Primary Bedroom



Dimensions: 15'9" x 15'5"
Area: 237 sq. ft
Counted as living area: Yes

Heated: Yes
Finished: Yes
Enclosed: Yes
Contiguous: Yes
Permitted: Yes
Wet space: No
Addition: No
Conversion: No

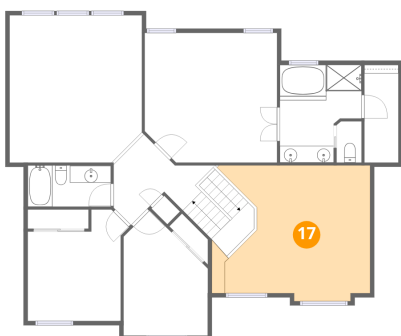
16 Floor 3 - Open To Below



Dimensions: 15'9" x 17'7"
Area: 270 sq. ft
Counted as living area: No

Heated: No
Finished: No
Enclosed: No
Contiguous: Yes
Permitted: No
Wet space: No
Addition: No
Conversion: No

17 Floor 3 - Open To Below



Dimensions: 18'10" x 16'2"
Area: 254 sq. ft
Counted as living area: No

Heated: No
Finished: No
Enclosed: No
Contiguous: Yes
Permitted: No
Wet space: No
Addition: No
Conversion: No

18 Floor 3 - Bath



Dimensions: 9'11" x 4'11"
Area: 49 sq. ft
Counted as living area: Yes

Heated: Yes
Finished: Yes
Enclosed: Yes
Contiguous: Yes
Permitted: Yes
Wet space: Yes
Addition: No
Conversion: No

19 Floor 3 - Bedroom



Dimensions: 11'1" x 13'3"
Area: 128 sq. ft
Counted as living area: Yes

Heated: Yes
Finished: Yes
Enclosed: Yes
Contiguous: Yes
Permitted: Yes
Wet space: No
Addition: No
Conversion: No

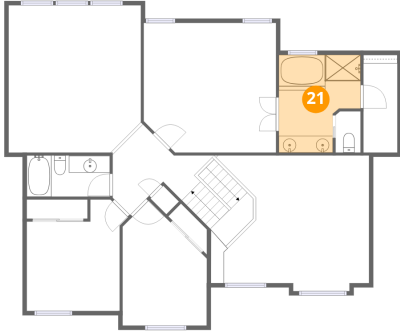
20 Floor 3 - W.I.C.



Dimensions: 4'1" x 11'8"
Area: 47 sq. ft
Counted as living area: No

Heated: Yes
Finished: Yes
Enclosed: Yes
Contiguous: No
Permitted: Yes
Wet space: No
Addition: No
Conversion: No

21 Floor 3 - Primary Bath



Dimensions: 9'9" x 11'8"
Area: 96 sq. ft
Counted as living area: Yes

Heated: Yes
Finished: Yes
Enclosed: Yes
Contiguous: Yes
Permitted: Yes
Wet space: Yes
Addition: No
Conversion: No

22 Floor 3 - Office



Dimensions: 10'1" x 14'10"
Area: 121 sq. ft
Counted as living area: Yes

Heated: Yes
Finished: Yes
Enclosed: Yes
Contiguous: Yes
Permitted: Yes
Wet space: No
Addition: No
Conversion: No