

Home data report

10425 Carriage Club Dr, Lone Tree, CO, US



Total Area: 3340 sq. ft

Basement: 0 sq. ft, 1st Floor: 1810 sq. ft, 2nd Floor: 1530 sq. ft

Excluded: Basement 1766 sq. ft, Covered patio 434 sq. ft, Garage 568 sq. ft, Deck 328 sq. ft, Open to below 690 sq. ft, Walls: 322 sq. ft

Property summary

 **3** Floors

 **4** Bedrooms

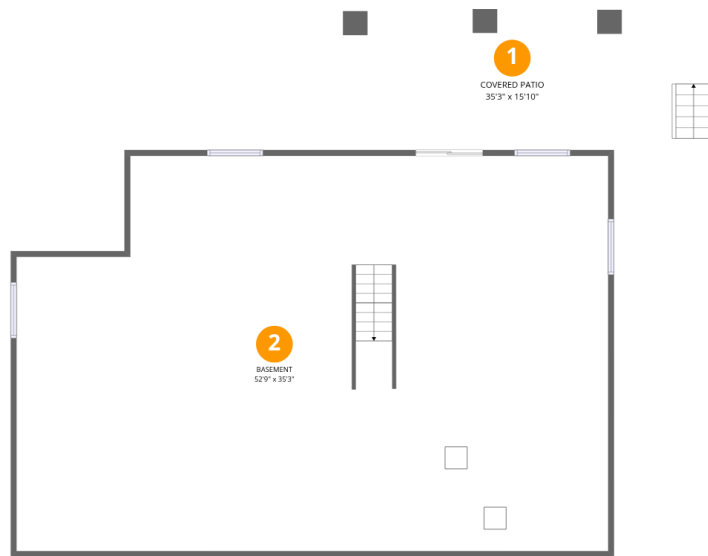
 **3** Bathrooms

Home data report

10425 Carriage Club Dr,Lone Tree,CO,US

 **1**
Half baths

 **1**
Garages



Room dimensions

Floor 1 Below grade

Total:0sqft

Excluded: 2200sqft

#		Dimensions	sqft	Counted as living area
1	Covered Patio	35'3" x 15'10"	434 sq. ft	No
2	Basement	52'9" x 35'3"	1766 sq. ft	No

10425 Carriage Club Dr,Lone Tree,CO,US



Room dimensions

Floor 2

Total:1810sqft

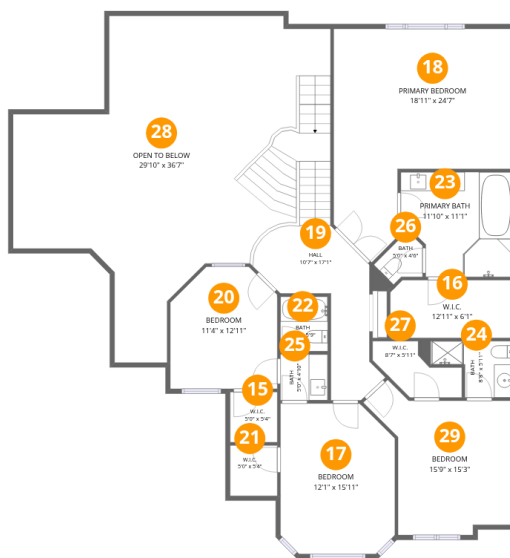
Excluded: 896sqft

#		Dimensions	sqft	Counted as living area
3	Foyer	6'5" x 12'0"	81 sq. ft	Yes
4	Office	12'3" x 11'8"	129 sq. ft	Yes
5	Church	13'11" x 12'0"	167 sq. ft	Yes
6	Laundry	11'2" x 10'8"	101 sq. ft	Yes
7	Hall	13'3" x 7'7"	61 sq. ft	Yes
8	Bath	5'9" x 5'4"	30 sq. ft	Yes
9	Pantry	2'9" x 5'2"	14 sq. ft	Yes
10	Kitchen	22'10" x 16'6"	319 sq. ft	Yes
11	Living Room	29'11" x 24'6"	702 sq. ft	Yes
12	Breakfast Nook	19'3" x 7'8"	147 sq. ft	Yes
13	Garage	29'10" x 19'8"	568 sq. ft	No

Home data report

10425 Carriage Club Dr,Lone Tree,CO,US

#		Dimensions	sqft	Counted as living area
14	Deck	24'2" x 11'10"	327 sq. ft	No



Room dimensions

Floor 3

Total:1530sqft

Excluded: 690sqft

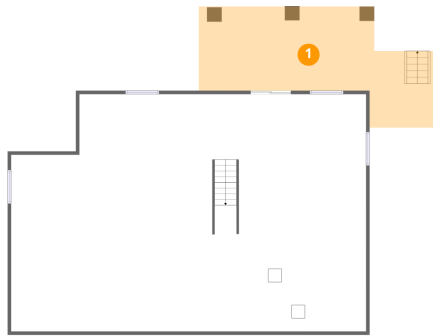
#		Dimensions	sqft	Counted as living area
15	W.I.C.	5'0" x 5'4"	26 sq. ft	Yes
16	W.I.C.	12'11" x 6'1"	78 sq. ft	Yes
17	Bedroom	12'1" x 15'11"	181 sq. ft	Yes
18	Primary Bedroom	18'11" x 24'7"	334 sq. ft	Yes
19	Hall	10'7" x 17'1"	217 sq. ft	Yes
20	Bedroom	11'4" x 12'11"	134 sq. ft	Yes
21	W.I.C.	5'0" x 5'4"	26 sq. ft	Yes
22	Bath	5'0" x 5'9"	29 sq. ft	Yes
23	Primary Bath	11'10" x 11'1"	119 sq. ft	Yes
24	Bath	8'8" x 5'11"	41 sq. ft	Yes
25	Bath	5'0" x 4'10"	24 sq. ft	Yes

Home data report

10425 Carriage Club Dr,Lone Tree,CO,US

#		Dimensions	sqft	Counted as living area
26	Bath	5'0" x 4'6"	17 sq. ft	Yes
27	W.I.C.	8'7" x 5'11"	36 sq. ft	Yes
28	Open To Below	29'10" x 36'7"	689 sq. ft	No
29	Bedroom	15'9" x 15'3"	180 sq. ft	Yes

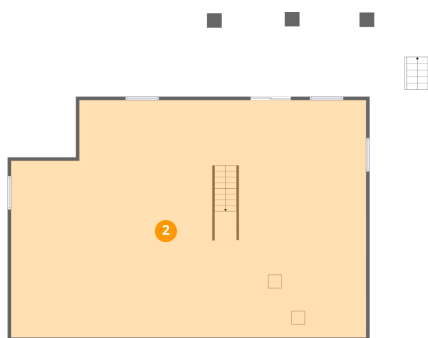
1 Floor 1 - Covered Patio



Dimensions: 35'3" x 15'10"
Area: 434 sq. ft
Counted as living area: No

Heated: No
Finished: No
Enclosed: No
Contiguous: Yes
Permitted: Yes
Wet space: No
Addition: No
Conversion: No

2 Floor 1 - Basement



Dimensions: 52'9" x 35'3"
Area: 1766 sq. ft
Counted as living area: No

Heated: Yes
Finished: No
Enclosed: Yes
Contiguous: Yes
Permitted: Yes
Wet space: No
Addition: No
Conversion: No

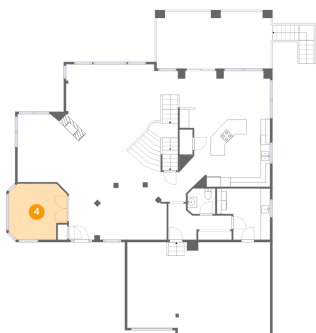
3 Floor 2 - Foyer



Dimensions: 6'5" x 12'0"
Area: 81 sq. ft
Counted as living area: Yes

Heated: Yes
Finished: Yes
Enclosed: Yes
Contiguous: Yes
Permitted: Yes
Wet space: No
Addition: No
Conversion: No

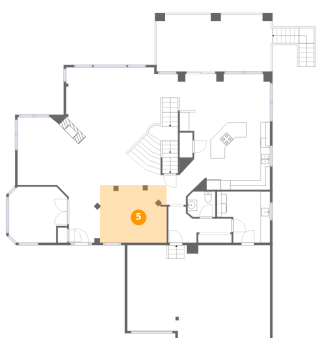
4 Floor 2 - Office



Dimensions: 12'3" x 11'8"
Area: 129 sq. ft
Counted as living area: Yes

Heated: Yes
Finished: Yes
Enclosed: Yes
Contiguous: Yes
Permitted: Yes
Wet space: No
Addition: No
Conversion: No

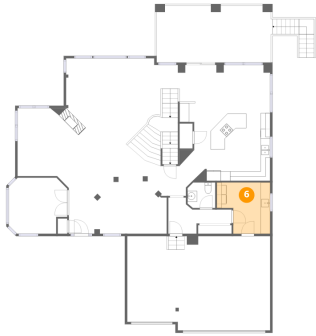
5 Floor 2 - Church



Dimensions: 13'11" x 12'0"
Area: 167 sq. ft
Counted as living area: Yes

Heated: Yes
Finished: Yes
Enclosed: Yes
Contiguous: Yes
Permitted: Yes
Wet space: No
Addition: No
Conversion: No

6 Floor 2 - Laundry



Dimensions: 11'2" x 10'8"
Area: 101 sq. ft
Counted as living area: Yes

Heated: Yes
Finished: Yes
Enclosed: Yes
Contiguous: Yes
Permitted: Yes
Wet space: No
Addition: No
Conversion: No

7 Floor 2 - Hall



Dimensions: 13'3" x 7'7"
Area: 61 sq. ft
Counted as living area: Yes

Heated: Yes
Finished: Yes
Enclosed: Yes
Contiguous: Yes
Permitted: Yes
Wet space: No
Addition: No
Conversion: No

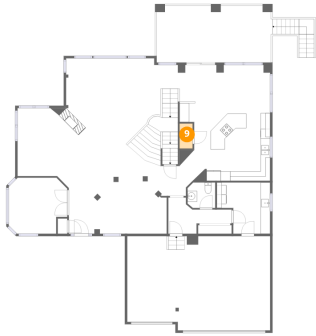
8 Floor 2 - Bath



Dimensions: 5'9" x 5'4"
Area: 30 sq. ft
Counted as living area: Yes

Heated: Yes
Finished: Yes
Enclosed: Yes
Contiguous: Yes
Permitted: Yes
Wet space: Yes
Addition: No
Conversion: No

9 Floor 2 - Pantry



Dimensions: 2'9" x 5'2"
Area: 14 sq. ft
Counted as living area: Yes

Heated: Yes
Finished: Yes
Enclosed: Yes
Contiguous: Yes
Permitted: Yes
Wet space: No
Addition: No
Conversion: No

10 Floor 2 - Kitchen



Dimensions: 22'10" x 16'6"
Area: 319 sq. ft
Counted as living area: Yes

Heated: Yes
Finished: Yes
Enclosed: Yes
Contiguous: Yes
Permitted: Yes
Wet space: No
Addition: No
Conversion: No

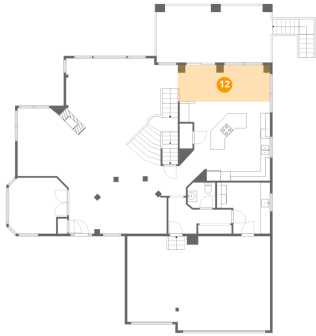
11 Floor 2 - Living Room



Dimensions: 29'11" x 24'6"
Area: 702 sq. ft
Counted as living area: Yes

Heated: Yes
Finished: Yes
Enclosed: Yes
Contiguous: Yes
Permitted: Yes
Wet space: No
Addition: No
Conversion: No

12 Floor 2 - Breakfast Nook



Dimensions: 19'3" x 7'8"
Area: 147 sq. ft
Counted as living area: Yes

Heated: Yes
Finished: Yes
Enclosed: Yes
Contiguous: Yes
Permitted: Yes
Wet space: No
Addition: No
Conversion: No

13 Floor 2 - Garage



Dimensions: 29'10" x 19'8"
Area: 568 sq. ft
Counted as living area: No

Heated: No
Finished: No
Enclosed: Yes
Contiguous: Yes
Permitted: Yes
Wet space: No
Addition: No
Conversion: No

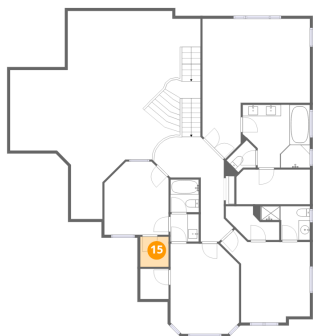
14 Floor 2 - Deck



Dimensions: 24'2" x 11'10"
Area: 327 sq. ft
Counted as living area: No

Heated: No
Finished: No
Enclosed: No
Contiguous: Yes
Permitted: Yes
Wet space: No
Addition: No
Conversion: No

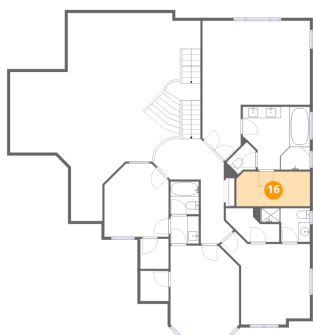
15 Floor 3 - W.I.C.



Dimensions: 5'0" x 5'4"
Area: 26 sq. ft
Counted as living area: Yes

Heated: Yes
Finished: Yes
Enclosed: Yes
Contiguous: Yes
Permitted: Yes
Wet space: No
Addition: No
Conversion: No

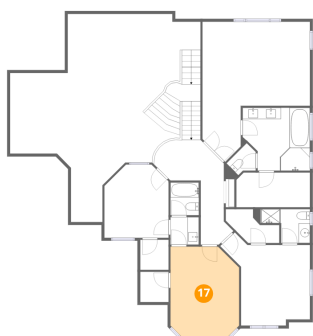
16 Floor 3 - W.I.C.



Dimensions: 12'11" x 6'1"
Area: 78 sq. ft
Counted as living area: Yes

Heated: Yes
Finished: Yes
Enclosed: Yes
Contiguous: Yes
Permitted: Yes
Wet space: No
Addition: No
Conversion: No

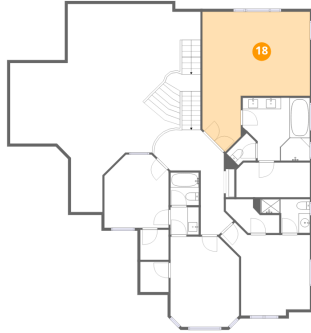
17 Floor 3 - Bedroom



Dimensions: 12'1" x 15'11"
Area: 181 sq. ft
Counted as living area: Yes

Heated: Yes
Finished: Yes
Enclosed: Yes
Contiguous: Yes
Permitted: Yes
Wet space: No
Addition: No
Conversion: No

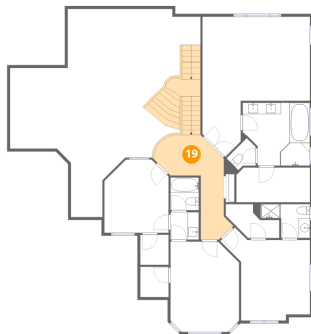
18 Floor 3 - Primary Bedroom



Dimensions: 18'11" x 24'7"
Area: 334 sq. ft
Counted as living area: Yes

Heated: Yes
Finished: Yes
Enclosed: Yes
Contiguous: Yes
Permitted: Yes
Wet space: No
Addition: No
Conversion: No

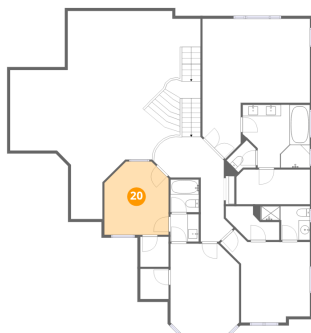
19 Floor 3 - Hall



Dimensions: 10'7" x 17'1"
Area: 217 sq. ft
Counted as living area: Yes

Heated: Yes
Finished: Yes
Enclosed: Yes
Contiguous: Yes
Permitted: Yes
Wet space: No
Addition: No
Conversion: No

20 Floor 3 - Bedroom



Dimensions: 11'4" x 12'11"
Area: 134 sq. ft
Counted as living area: Yes

Heated: Yes
Finished: Yes
Enclosed: Yes
Contiguous: Yes
Permitted: Yes
Wet space: No
Addition: No
Conversion: No

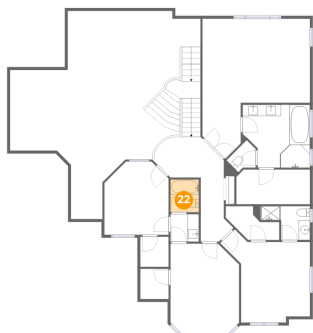
21 Floor 3 - W.I.C.



Dimensions: 5'0" x 5'4"
Area: 26 sq. ft
Counted as living area: Yes

Heated: Yes
Finished: Yes
Enclosed: Yes
Contiguous: Yes
Permitted: Yes
Wet space: No
Addition: No
Conversion: No

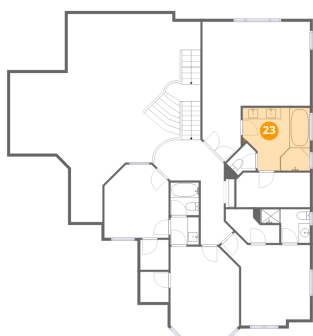
22 Floor 3 - Bath



Dimensions: 5'0" x 5'9"
Area: 29 sq. ft
Counted as living area: Yes

Heated: Yes
Finished: Yes
Enclosed: Yes
Contiguous: Yes
Permitted: Yes
Wet space: Yes
Addition: No
Conversion: No

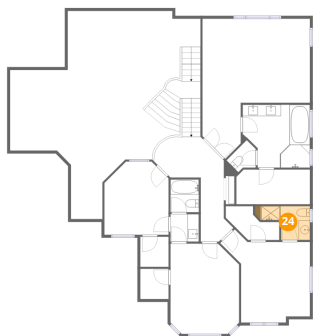
23 Floor 3 - Primary Bath



Dimensions: 11'10" x 11'1"
Area: 119 sq. ft
Counted as living area: Yes

Heated: Yes
Finished: Yes
Enclosed: Yes
Contiguous: Yes
Permitted: Yes
Wet space: Yes
Addition: No
Conversion: No

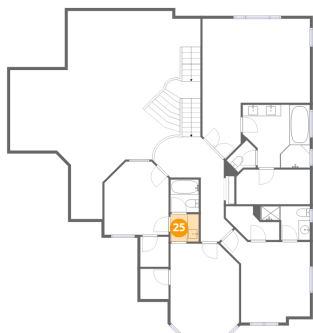
24 Floor 3 - Bath



Dimensions: 8'8" x 5'11"
Area: 41 sq. ft
Counted as living area: Yes

Heated: Yes
Finished: Yes
Enclosed: Yes
Contiguous: Yes
Permitted: Yes
Wet space: Yes
Addition: No
Conversion: No

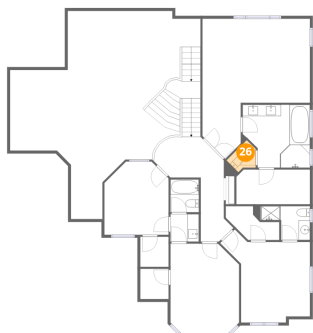
25 Floor 3 - Bath



Dimensions: 5'0" x 4'10"
Area: 24 sq. ft
Counted as living area: Yes

Heated: Yes
Finished: Yes
Enclosed: Yes
Contiguous: Yes
Permitted: Yes
Wet space: Yes
Addition: No
Conversion: No

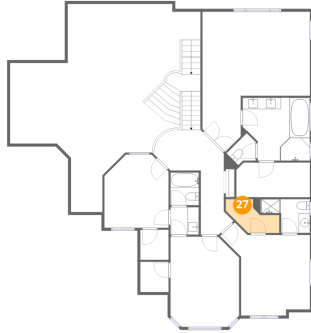
26 Floor 3 - Bath



Dimensions: 5'0" x 4'6"
Area: 17 sq. ft
Counted as living area: Yes

Heated: Yes
Finished: Yes
Enclosed: Yes
Contiguous: Yes
Permitted: Yes
Wet space: Yes
Addition: No
Conversion: No

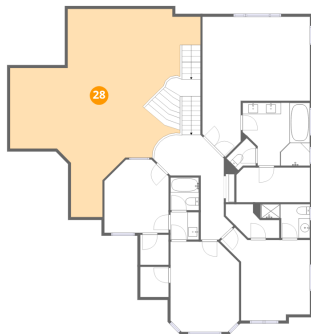
27 Floor 3 - W.I.C.



Dimensions: 8'7" x 5'11"
Area: 36 sq. ft
Counted as living area: Yes

Heated: Yes
Finished: Yes
Enclosed: Yes
Contiguous: Yes
Permitted: Yes
Wet space: No
Addition: No
Conversion: No

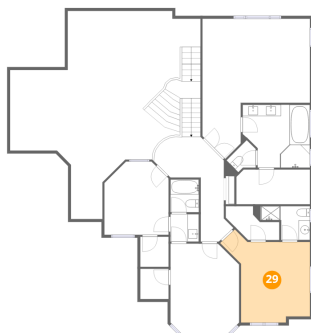
28 Floor 3 - Open To Below



Dimensions: 29'10" x 36'7"
Area: 689 sq. ft
Counted as living area: No

Heated: No
Finished: No
Enclosed: No
Contiguous: Yes
Permitted: No
Wet space: No
Addition: No
Conversion: No

29 Floor 3 - Bedroom



Dimensions: 15'9" x 15'3"
Area: 180 sq. ft
Counted as living area: Yes

Heated: Yes
Finished: Yes
Enclosed: Yes
Contiguous: Yes
Permitted: Yes
Wet space: No
Addition: No
Conversion: No