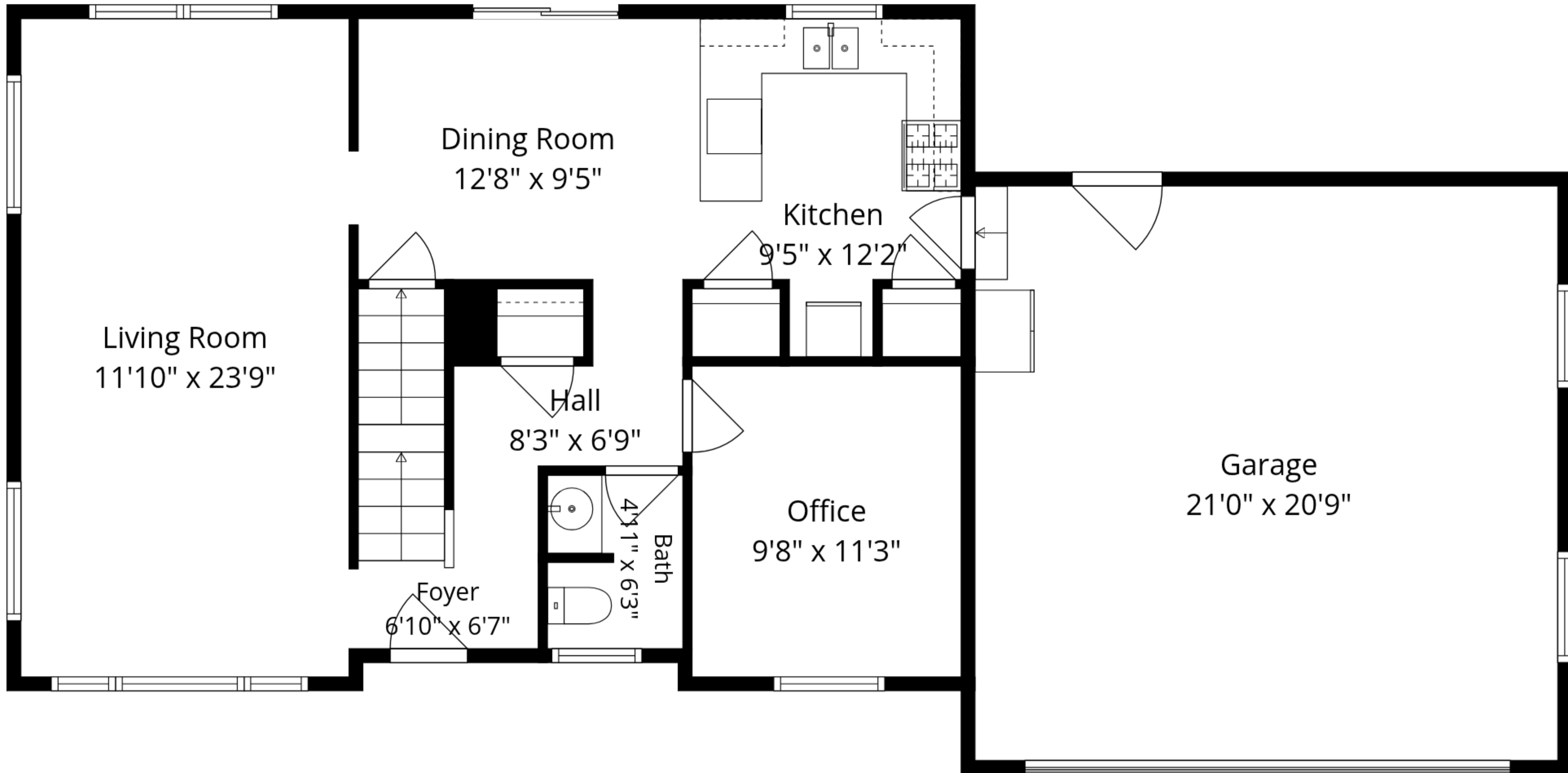


Recreation Room
11'10" x 23'9"

Basement
22'1" x 23'9"

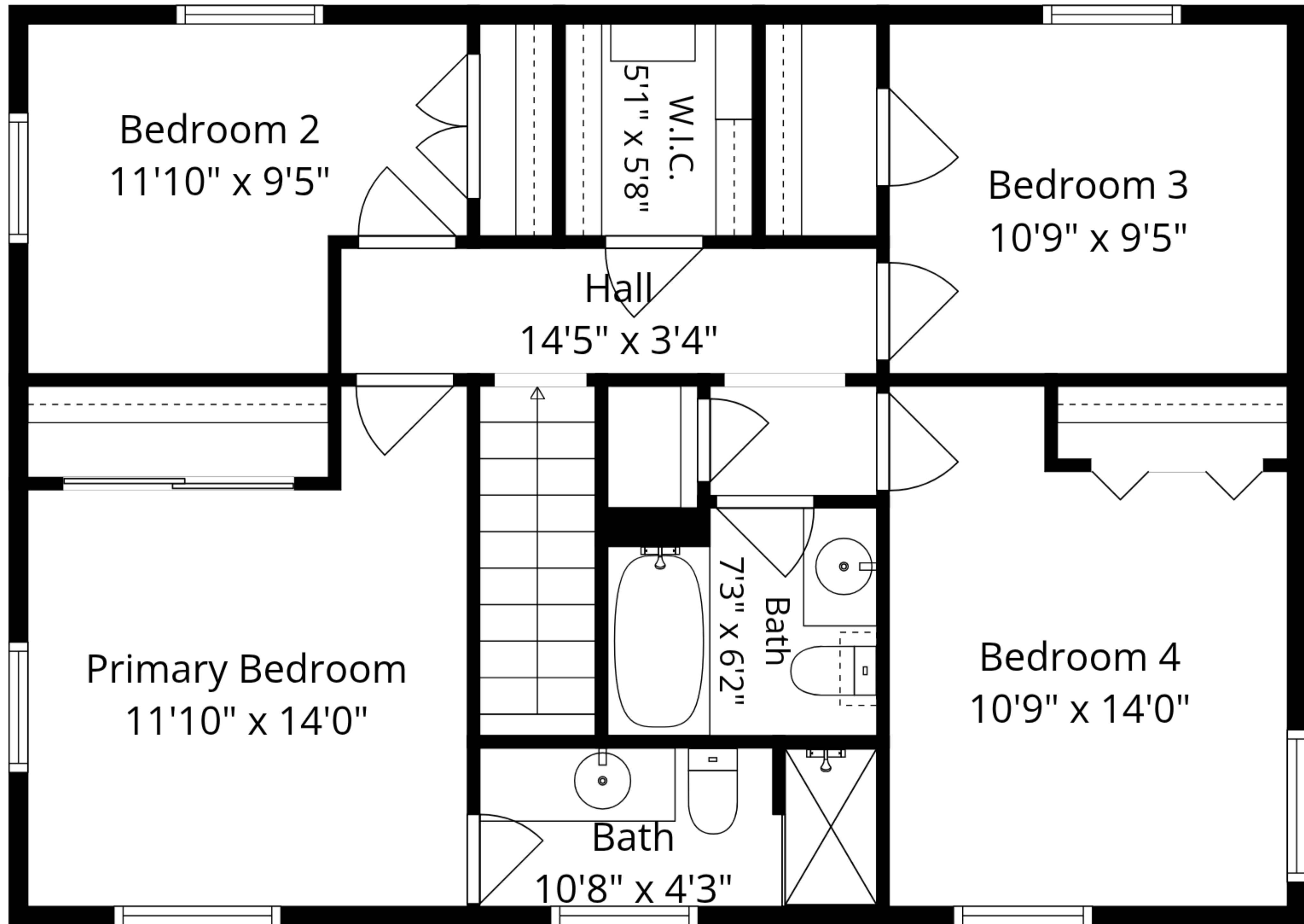
Total GLA: 2028 sq. ft | Total: 3037 sq. ft
Lower floor: 312 sq. ft (Excluded areas 540 sq. ft)
Main floor: 852 sq. ft (Excluded areas 469 sq. ft)
Upper floor: 864 sq. ft

Sizes And Dimensions Are Approximate. Actual May Vary.



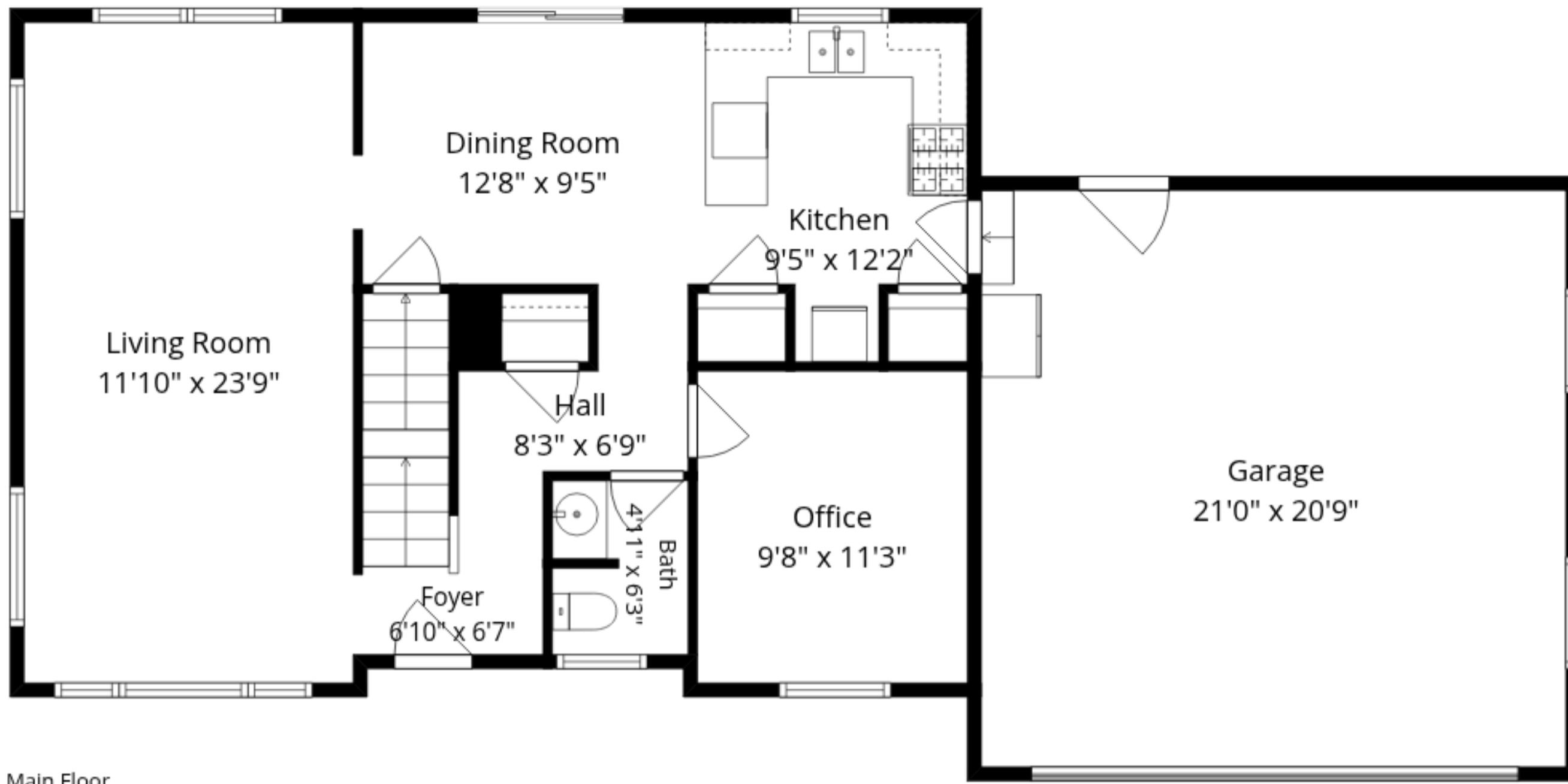
Total GLA: 2028 sq. ft | Total: 3037 sq. ft
 Lower floor: 312 sq. ft (Excluded areas 540 sq. ft)
 Main floor: 852 sq. ft (Excluded areas 469 sq. ft)
 Upper floor: 864 sq. ft

Sizes And Dimensions Are Approximate. Actual May Vary.

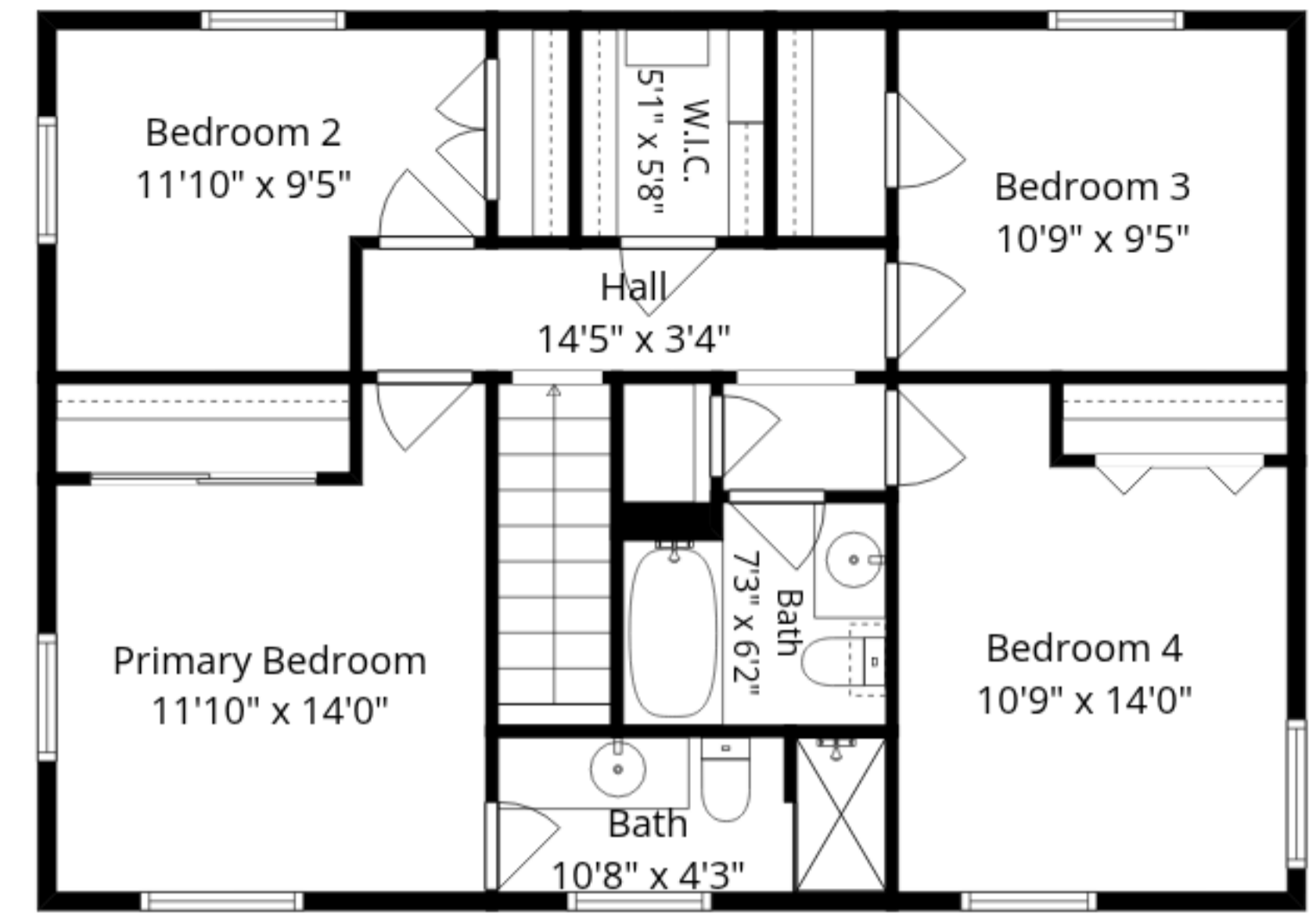


Total GLA: 2028 sq. ft | Total: 3037 sq. ft
 Lower floor: 312 sq. ft (Excluded areas 540 sq. ft)
 Main floor: 852 sq. ft (Excluded areas 469 sq. ft)
 Upper floor: 864 sq. ft

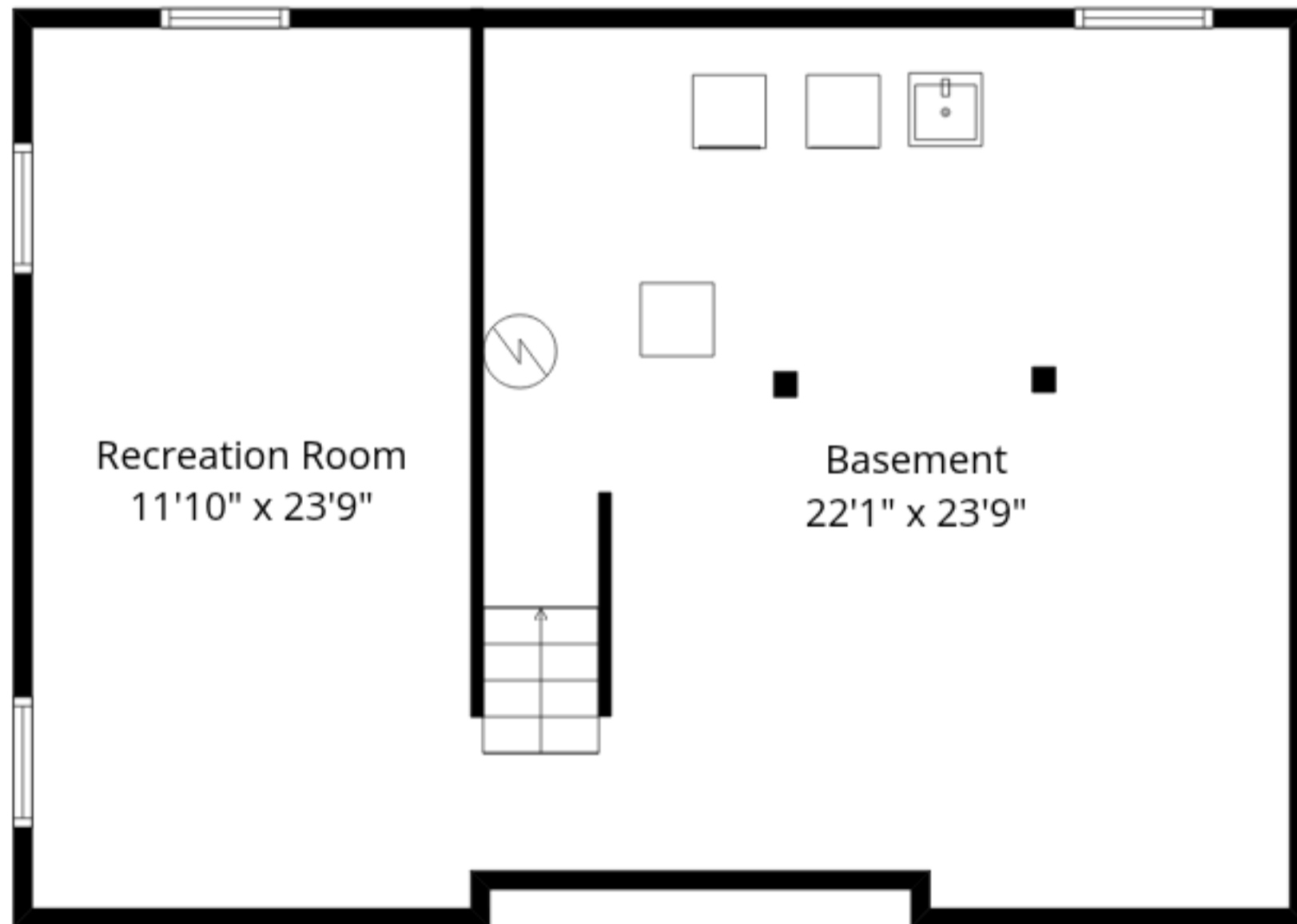
Sizes And Dimensions Are Approximate. Actual May Vary.



Main Floor



Upper Floor



Lower Floor

Total GLA: 2028 sq. ft | Total: 3037 sq. ft
 Lower floor: 312 sq. ft (Excluded areas 540 sq. ft)
 Main floor: 852 sq. ft (Excluded areas 469 sq. ft)
 Upper floor: 864 sq. ft

Sizes And Dimensions Are Approximate. Actual May Vary.