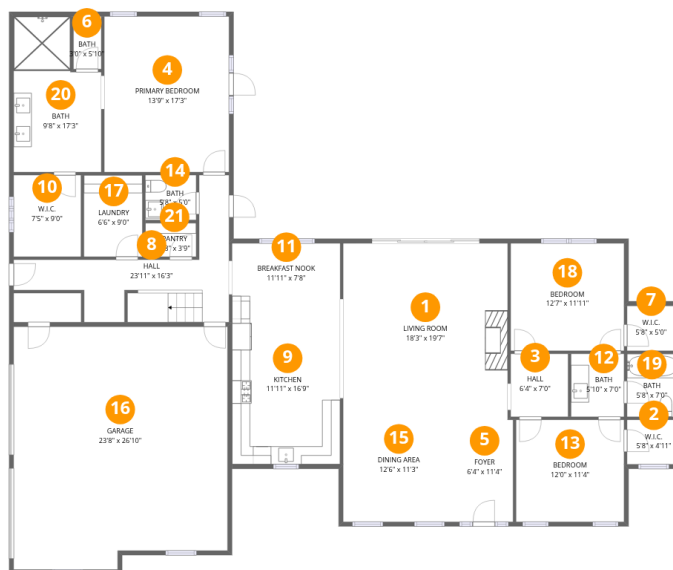


Home data report

8970 San Marcos Rd, Atascadero, CA, US

 **1**
Half baths

 **1**
Garages



Room dimensions

Floor 1

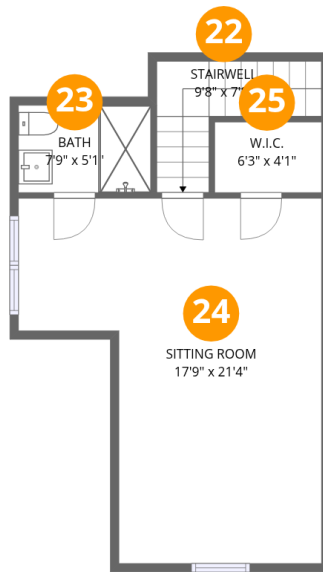
Total: 2177 sqft Excluded: 612 sqft

#		Dimensions	sqft	Counted as living area
1	Living Room	18'3" x 19'7"	356 sq. ft	Yes
2	W.I.C.	5'8" x 4'11"	28 sq. ft	Yes
3	Hall	6'4" x 7'0"	44 sq. ft	Yes
4	Primary Bedroom	13'9" x 17'3"	238 sq. ft	Yes
5	Foyer	6'4" x 11'4"	72 sq. ft	Yes
6	Bath	3'0" x 5'10"	18 sq. ft	Yes
7	W.I.C.	5'8" x 5'0"	28 sq. ft	Yes
8	Hall	23'11" x 16'3"	167 sq. ft	Yes
9	Kitchen	11'11" x 16'9"	201 sq. ft	Yes
10	W.I.C.	7'5" x 9'0"	67 sq. ft	Yes
11	Breakfast Nook	11'11" x 7'8"	91 sq. ft	Yes

Home data report

8970 San Marcos Rd, Atascadero, CA, US

#		Dimensions	sqft	Counted as living area
12	Bath	5'10" x 7'0"	41 sq. ft	Yes
13	Bedroom	12'0" x 11'4"	135 sq. ft	Yes
14	Bath	5'8" x 5'0"	28 sq. ft	Yes
15	Dining Area	12'6" x 11'3"	141 sq. ft	Yes
16	Garage	23'8" x 26'10"	612 sq. ft	No
17	Laundry	6'6" x 9'0"	58 sq. ft	Yes
18	Bedroom	12'7" x 11'11"	150 sq. ft	Yes
19	Bath	5'8" x 7'0"	40 sq. ft	Yes
20	Bath	9'8" x 17'3"	146 sq. ft	Yes
21	Pantry	5'8" x 3'9"	21 sq. ft	Yes



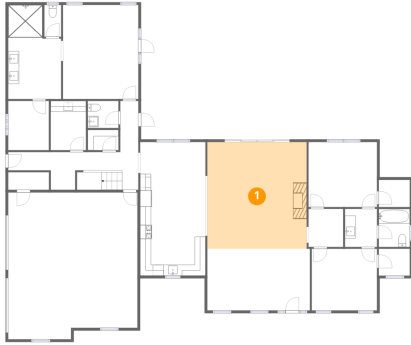
Room dimensions

Floor 2

Total: 374 sqft Excluded: 45 sqft

#		Dimensions	sqft	Counted as living area
22	Stairwell	9'8" x 7'8"	45 sq. ft	No
23	Bath	7'9" x 5'1"	39 sq. ft	Yes
24	Sitting Room	17'9" x 21'4"	298 sq. ft	Yes
25	W.I.C.	6'3" x 4'1"	26 sq. ft	Yes

1 Floor 1 - Living Room



Dimensions: 18'3" x 19'7"
Area: 356 sq. ft
Counted as living area: Yes

Heated: Yes
Finished: Yes
Enclosed: Yes
Contiguous: Yes
Permitted: Yes
Wet space: No
Addition: No
Conversion: No

2 Floor 1 - W.I.C.



Dimensions: 5'8" x 4'11"
Area: 28 sq. ft
Counted as living area: Yes

Heated: Yes
Finished: Yes
Enclosed: Yes
Contiguous: Yes
Permitted: Yes
Wet space: No
Addition: No
Conversion: No

3 Floor 1 - Hall



Dimensions: 6'4" x 7'0"
Area: 44 sq. ft
Counted as living area: Yes

Heated: Yes
Finished: Yes
Enclosed: Yes
Contiguous: Yes
Permitted: Yes
Wet space: No
Addition: No
Conversion: No

4 Floor 1 - Primary Bedroom



Dimensions: 13'9" x 17'3"
Area: 238 sq. ft
Counted as living area: Yes

Heated: Yes
Finished: Yes
Enclosed: Yes
Contiguous: Yes
Permitted: Yes
Wet space: No
Addition: No
Conversion: No

5 Floor 1 - Foyer



Dimensions: 6'4" x 11'4"
Area: 72 sq. ft
Counted as living area: Yes

Heated: Yes
Finished: Yes
Enclosed: Yes
Contiguous: Yes
Permitted: Yes
Wet space: No
Addition: No
Conversion: No

6 Floor 1 - Bath



Dimensions: 3'0" x 5'10"
Area: 18 sq. ft
Counted as living area: Yes

Heated: Yes
Finished: Yes
Enclosed: Yes
Contiguous: Yes
Permitted: Yes
Wet space: Yes
Addition: No
Conversion: No

7 Floor 1 - W.I.C.



Dimensions: 5'8" x 5'0"
Area: 28 sq. ft
Counted as living area: Yes

Heated: Yes
Finished: Yes
Enclosed: Yes
Contiguous: Yes
Permitted: Yes
Wet space: No
Addition: No
Conversion: No

8 Floor 1 - Hall



Dimensions: 23'11" x 16'3"
Area: 167 sq. ft
Counted as living area: Yes

Heated: Yes
Finished: Yes
Enclosed: Yes
Contiguous: Yes
Permitted: Yes
Wet space: No
Addition: No
Conversion: No

9 Floor 1 - Kitchen



Dimensions: 11'11" x 16'9"
Area: 201 sq. ft
Counted as living area: Yes

Heated: Yes
Finished: Yes
Enclosed: Yes
Contiguous: Yes
Permitted: Yes
Wet space: No
Addition: No
Conversion: No

10 Floor 1 - W.I.C.



Dimensions: 7'5" x 9'0"
Area: 67 sq. ft
Counted as living area: Yes

Heated: Yes
Finished: Yes
Enclosed: Yes
Contiguous: Yes
Permitted: Yes
Wet space: No
Addition: No
Conversion: No

11 Floor 1 - Breakfast Nook



Dimensions: 11'11" x 7'8"
Area: 91 sq. ft
Counted as living area: Yes

Heated: Yes
Finished: Yes
Enclosed: Yes
Contiguous: Yes
Permitted: Yes
Wet space: No
Addition: No
Conversion: No

12 Floor 1 - Bath



Dimensions: 5'10" x 7'0"
Area: 41 sq. ft
Counted as living area: Yes

Heated: Yes
Finished: Yes
Enclosed: Yes
Contiguous: Yes
Permitted: Yes
Wet space: Yes
Addition: No
Conversion: No

13 Floor 1 - Bedroom



Dimensions: 12'0" x 11'4"
Area: 135 sq. ft
Counted as living area: Yes

Heated: Yes
Finished: Yes
Enclosed: Yes
Contiguous: Yes
Permitted: Yes
Wet space: No
Addition: No
Conversion: No

14 Floor 1 - Bath



Dimensions: 5'8" x 5'0"
Area: 28 sq. ft
Counted as living area: Yes

Heated: Yes
Finished: Yes
Enclosed: Yes
Contiguous: Yes
Permitted: Yes
Wet space: Yes
Addition: No
Conversion: No

15 Floor 1 - Dining Area



Dimensions: 12'6" x 11'3"
Area: 141 sq. ft
Counted as living area: Yes

Heated: Yes
Finished: Yes
Enclosed: Yes
Contiguous: Yes
Permitted: Yes
Wet space: No
Addition: No
Conversion: No

16 Floor 1 - Garage



Dimensions: 23'8" x 26'10"
Area: 612 sq. ft
Counted as living area: No

Heated: No
Finished: No
Enclosed: Yes
Contiguous: Yes
Permitted: Yes
Wet space: No
Addition: No
Conversion: No

17 Floor 1 - Laundry



Dimensions: 6'6" x 9'0"
Area: 58 sq. ft
Counted as living area: Yes

Heated: Yes
Finished: Yes
Enclosed: Yes
Contiguous: Yes
Permitted: Yes
Wet space: No
Addition: No
Conversion: No

18 Floor 1 - Bedroom



Dimensions: 12'7" x 11'11"
Area: 150 sq. ft
Counted as living area: Yes

Heated: Yes
Finished: Yes
Enclosed: Yes
Contiguous: Yes
Permitted: Yes
Wet space: No
Addition: No
Conversion: No

19 Floor 1 - Bath



Dimensions: 5'8" x 7'0"
Area: 40 sq. ft
Counted as living area: Yes

Heated: Yes
Finished: Yes
Enclosed: Yes
Contiguous: Yes
Permitted: Yes
Wet space: Yes
Addition: No
Conversion: No

20 Floor 1 - Bath



Dimensions: 9'8" x 17'3"
Area: 146 sq. ft
Counted as living area: Yes

Heated: Yes
Finished: Yes
Enclosed: Yes
Contiguous: Yes
Permitted: Yes
Wet space: Yes
Addition: No
Conversion: No

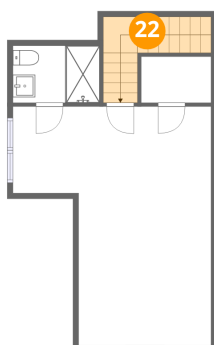
21 Floor 1 - Pantry



Dimensions: 5'8" x 3'9"
Area: 21 sq. ft
Counted as living area: Yes

Heated: Yes
Finished: Yes
Enclosed: Yes
Contiguous: Yes
Permitted: Yes
Wet space: No
Addition: No
Conversion: No

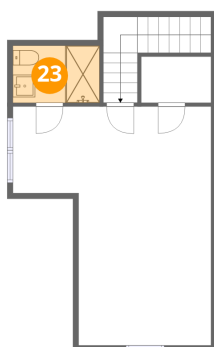
22 Floor 2 - Stairwell



Dimensions: 9'8" x 7'8"
Area: 45 sq. ft
Counted as living area: No

Heated: No
Finished: No
Enclosed: No
Contiguous: Yes
Permitted: No
Wet space: No
Addition: No
Conversion: No

23 Floor 2 - Bath



Dimensions: 7'9" x 5'1"
Area: 39 sq. ft
Counted as living area: Yes

Heated: Yes
Finished: Yes
Enclosed: Yes
Contiguous: Yes
Permitted: Yes
Wet space: Yes
Addition: No
Conversion: No

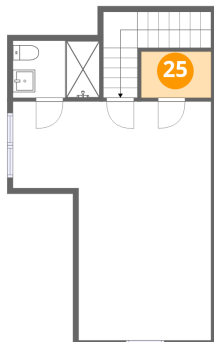
24 Floor 2 - Sitting Room



Dimensions: 17'9" x 21'4"
Area: 298 sq. ft
Counted as living area: Yes

Heated: Yes
Finished: Yes
Enclosed: Yes
Contiguous: Yes
Permitted: Yes
Wet space: No
Addition: No
Conversion: No

25 Floor 2 - W.I.C.



Dimensions: 6'3" x 4'1"
Area: 26 sq. ft
Counted as living area: Yes

Heated: Yes
Finished: Yes
Enclosed: Yes
Contiguous: Yes
Permitted: Yes
Wet space: No
Addition: No
Conversion: No