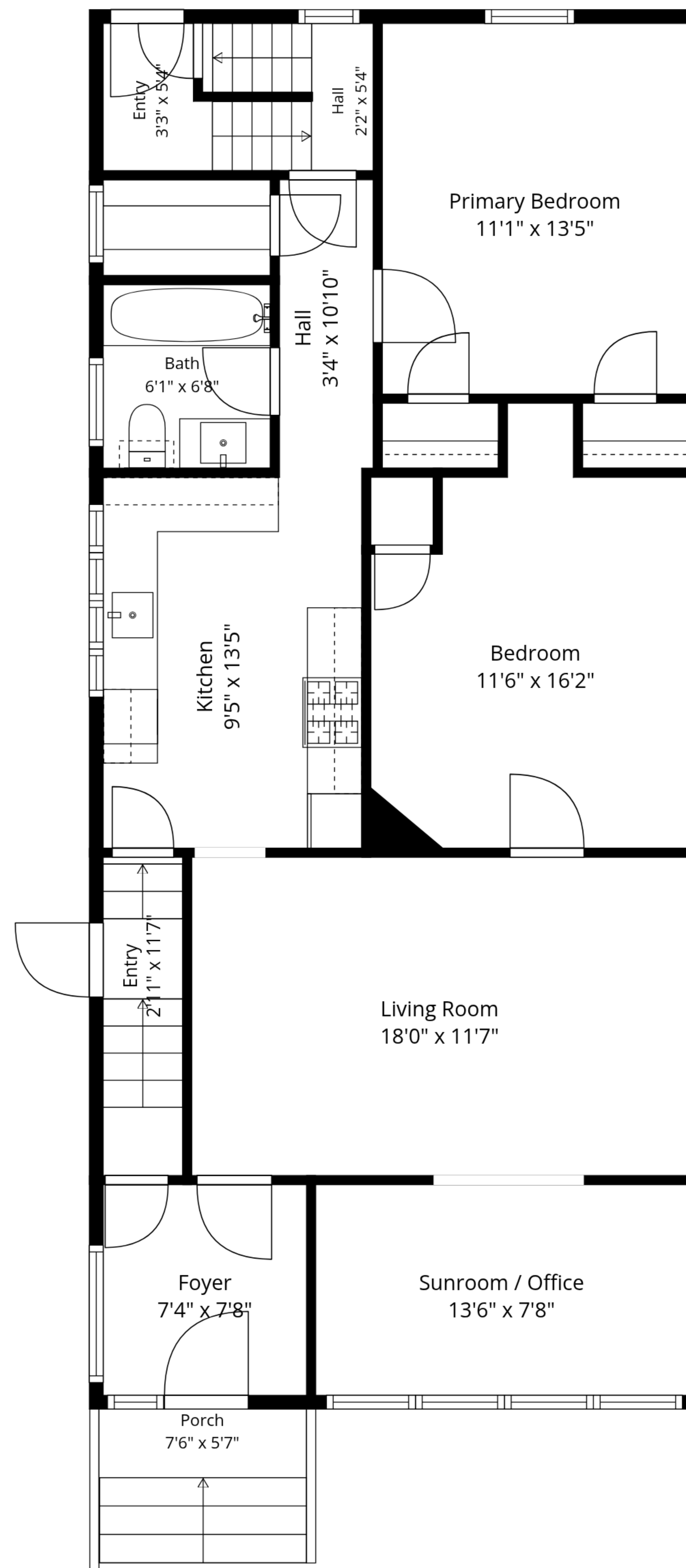


TOTAL: 3216 sq. ft

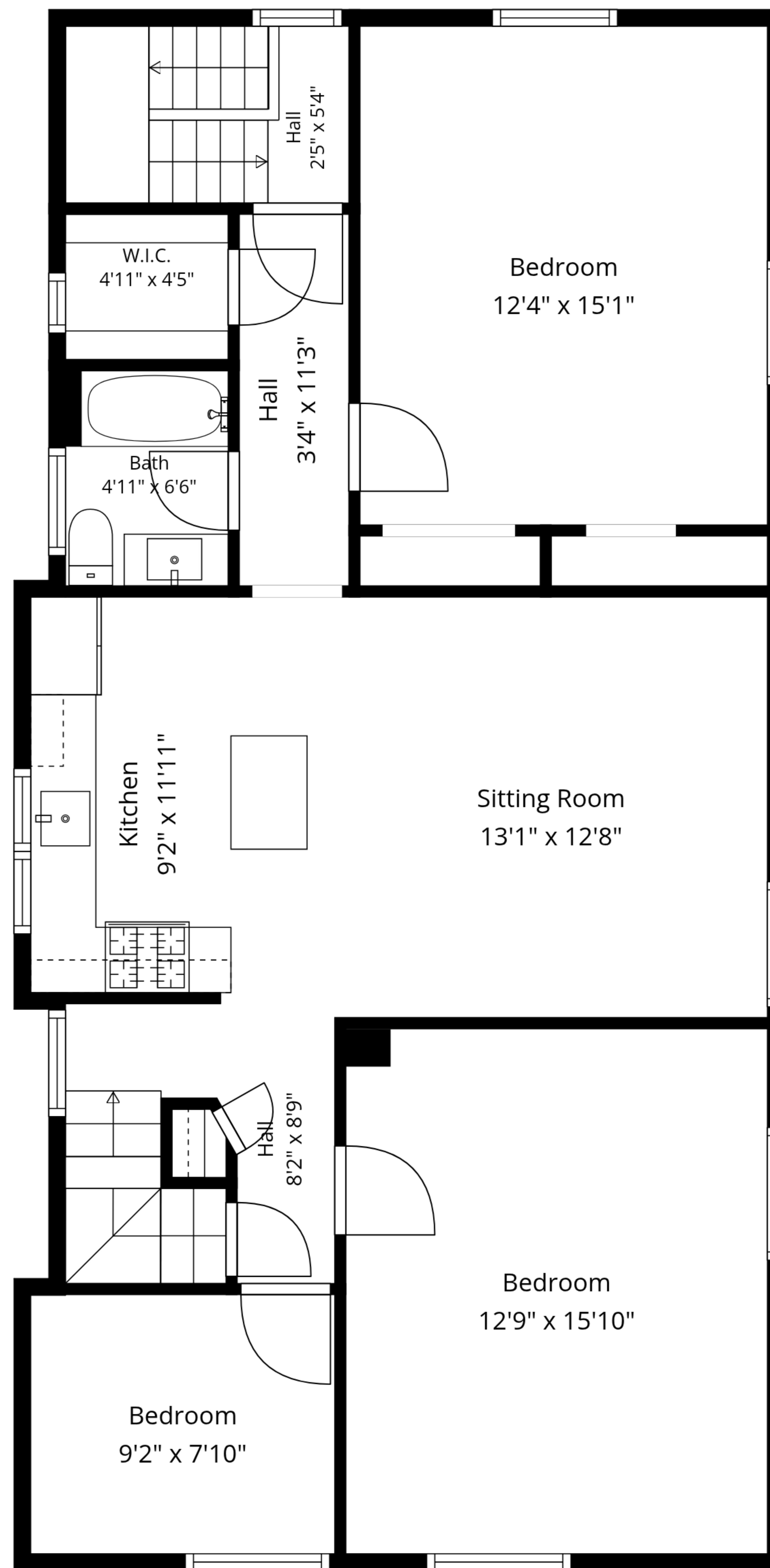
Basement: 882 sq. ft, 1st floor: 1054 sq. ft, 2nd floor: 998 sq. ft, 3rd floor: 282 sq. ft
EXCLUDED AREAS: PORCH: 42 sq. ft, LOW CEILING: 28 sq. ft, WALLS: 242 sq. ft



TOTAL: 3216 sq. ft

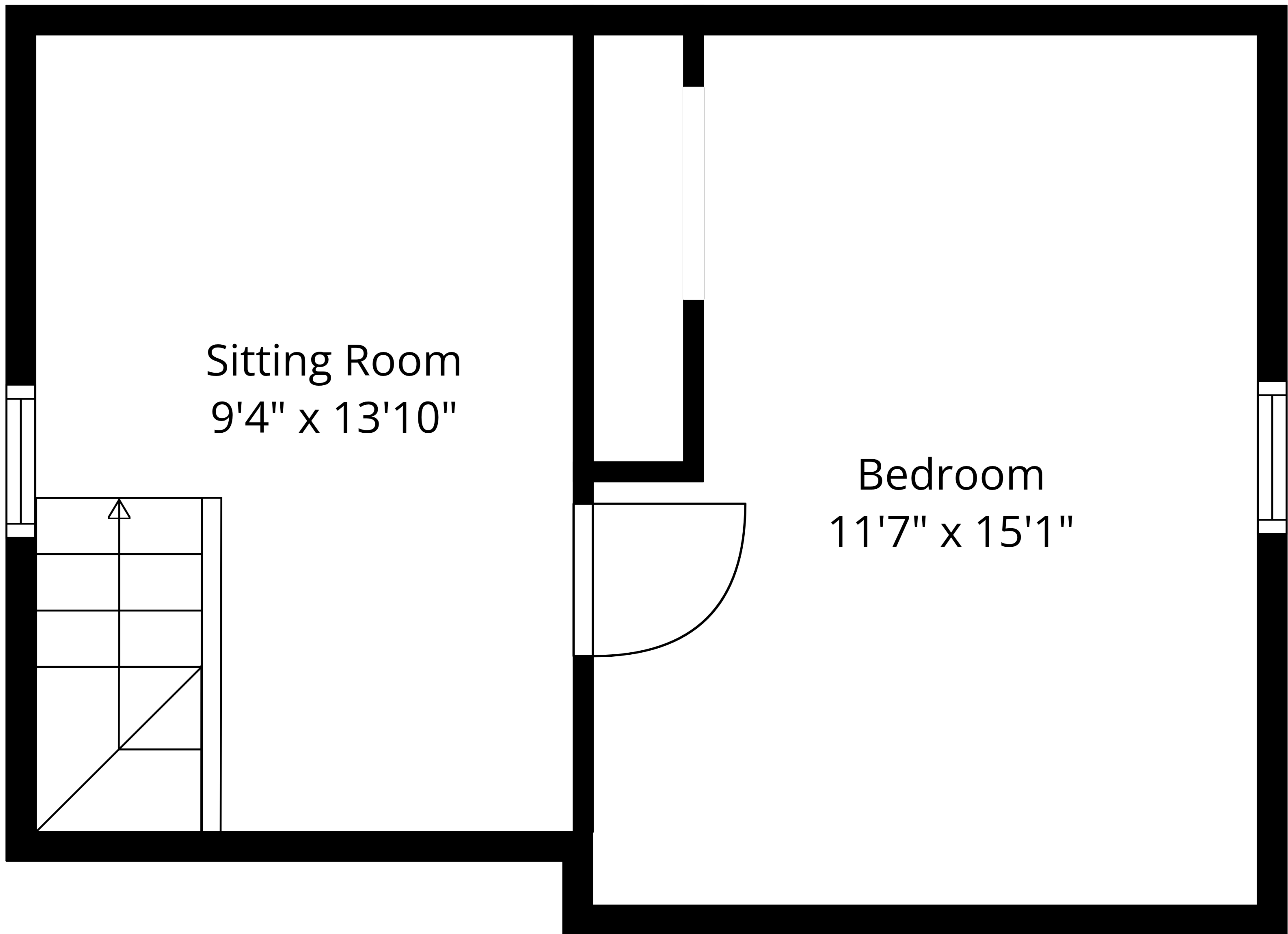
Basement: 882 sq. ft, 1st floor: 1054 sq. ft, 2nd floor: 998 sq. ft, 3rd floor: 282 sq. ft
 EXCLUDED AREAS: PORCH: 42 sq. ft, LOW CEILING: 28 sq. ft, WALLS: 242 sq. ft

Measurements Are Approximate - Deemed Highly Reliable But Not Guaranteed



TOTAL: 3216 sq. ft

Basement: 882 sq. ft, 1st floor: 1054 sq. ft, 2nd floor: 998 sq. ft, 3rd floor: 282 sq. ft
 EXCLUDED AREAS: PORCH: 42 sq. ft, LOW CEILING: 28 sq. ft, WALLS: 242 sq. ft



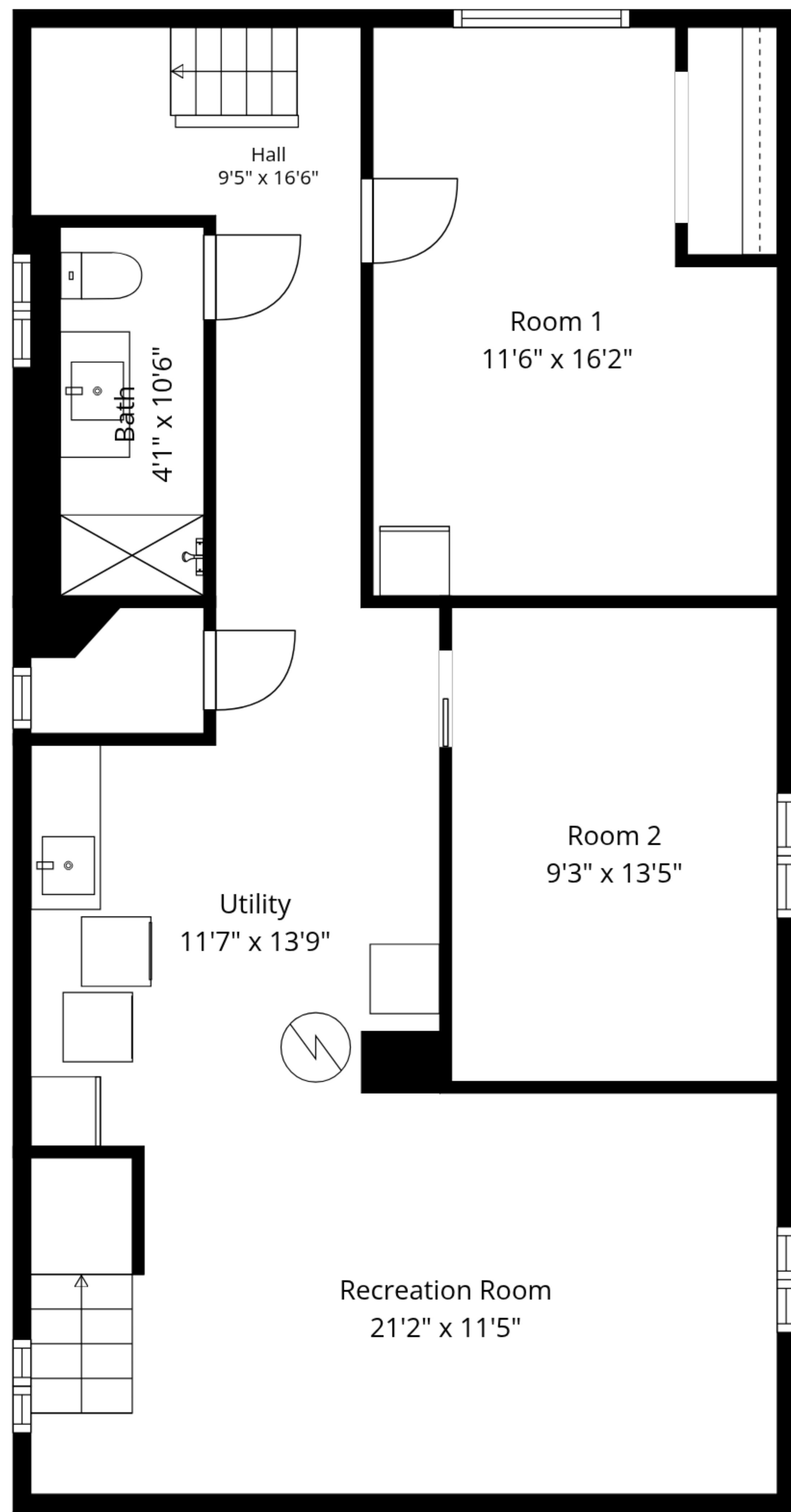
Sitting Room
9'4" x 13'10"

Bedroom
11'7" x 15'1"

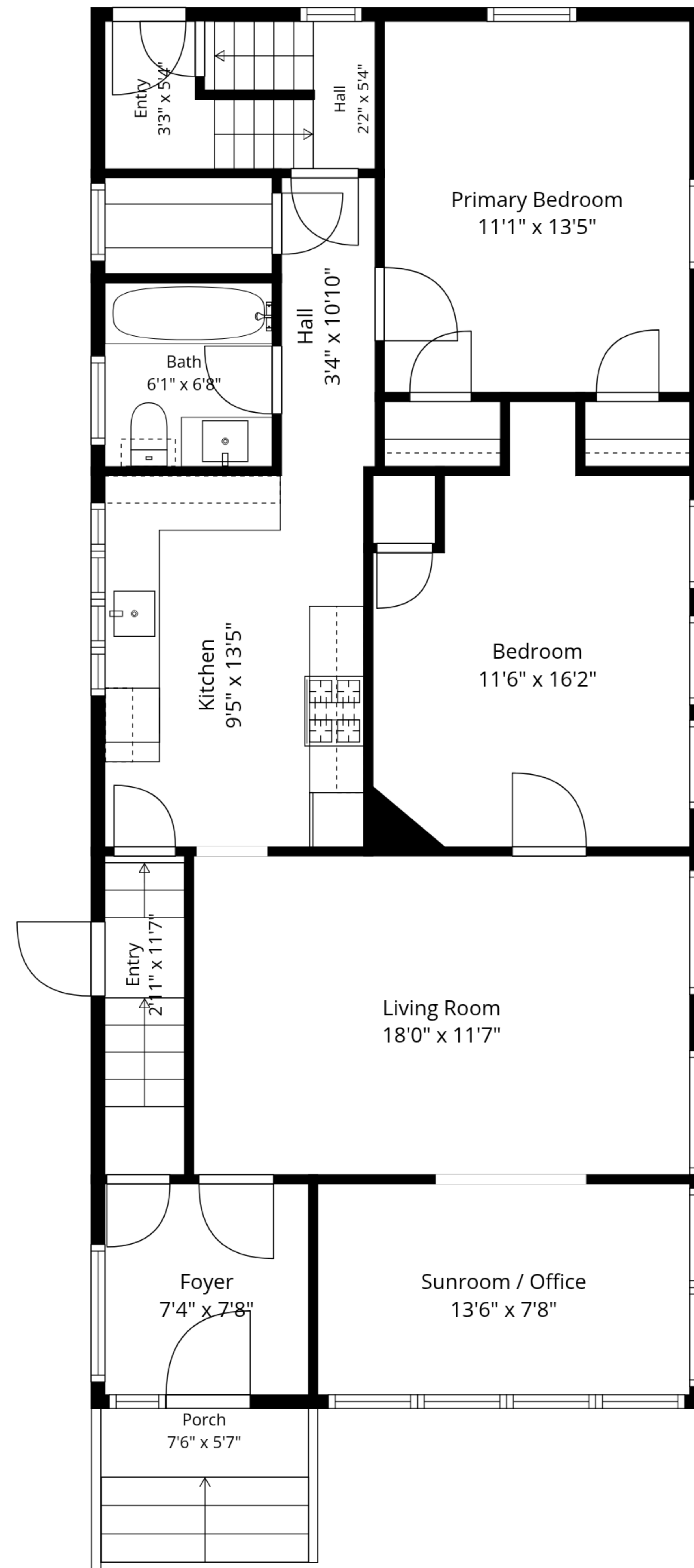
TOTAL: 3216 sq. ft

Basement: 882 sq. ft, 1st floor: 1054 sq. ft, 2nd floor: 998 sq. ft, 3rd floor: 282 sq. ft
EXCLUDED AREAS: PORCH: 42 sq. ft, LOW CEILING: 28 sq. ft, WALLS: 242 sq. ft

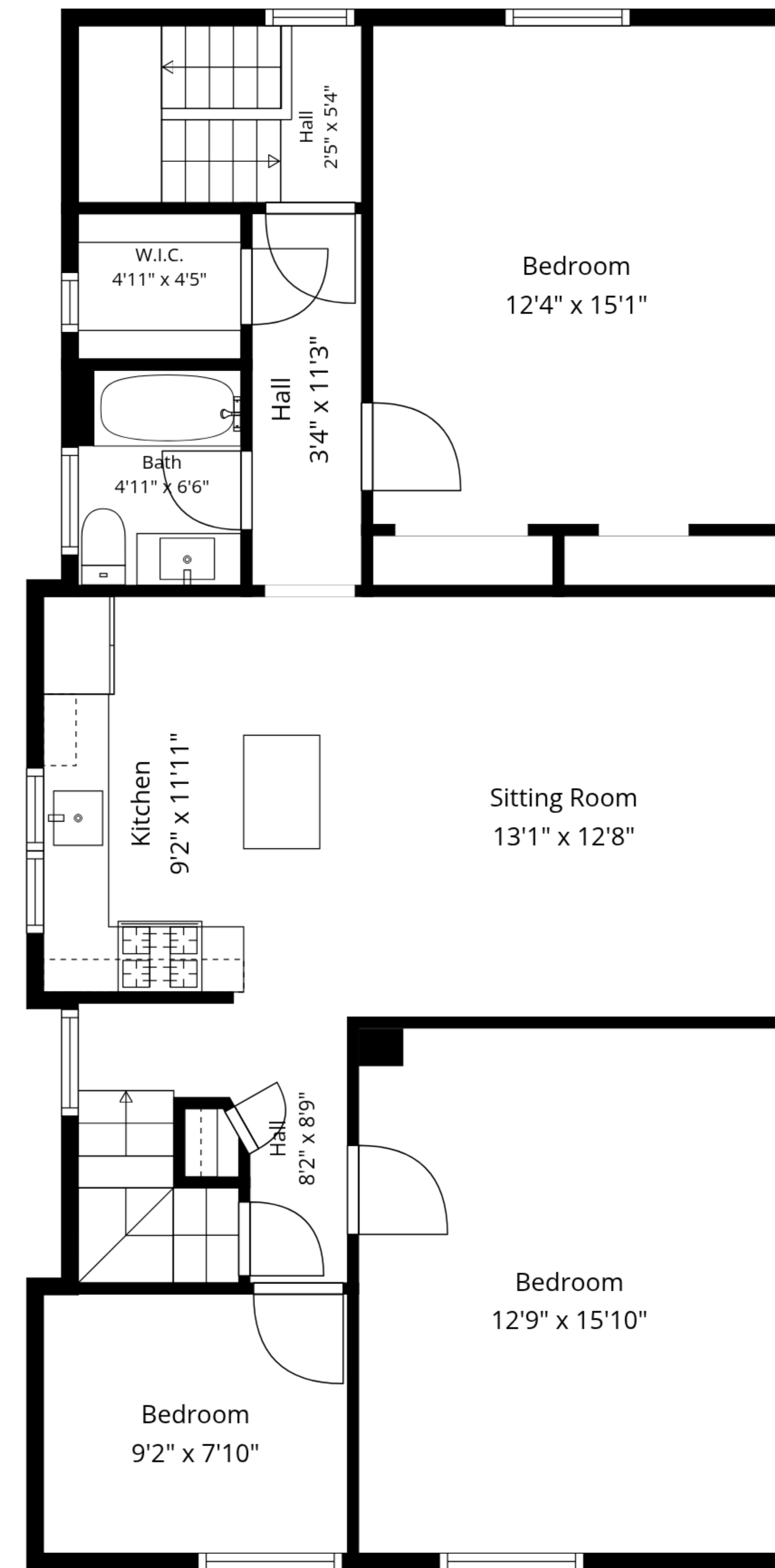
Measurements Are Approximate - Deemed Highly Reliable But Not Guaranteed



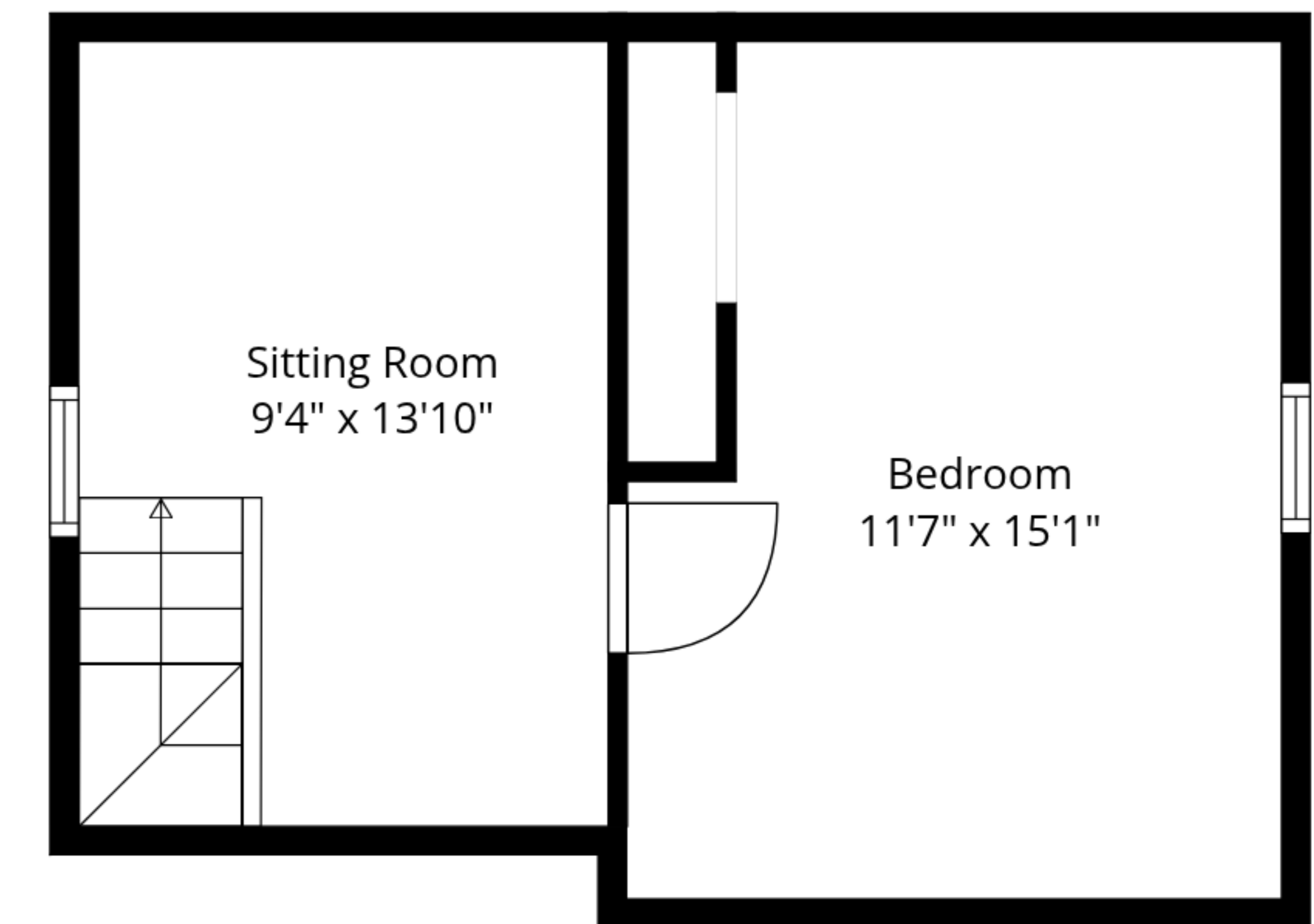
Basement



1st Floor



2nd Floor



3rd Floor

TOTAL: 3216 sq. ft

Basement: 882 sq. ft, 1st floor: 1054 sq. ft, 2nd floor: 998 sq. ft, 3rd floor: 282 sq. ft
 EXCLUDED AREAS: PORCH: 42 sq. ft, LOW CEILING: 28 sq. ft, WALLS: 242 sq. ft