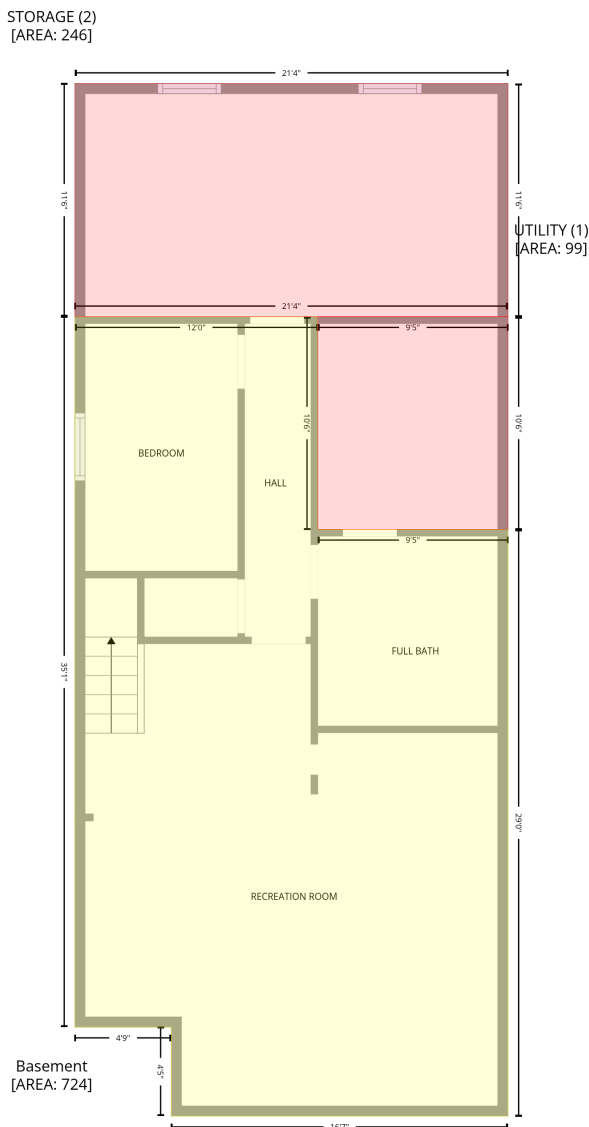


# 6 Merrydrew Court, Streetsville, Vista Heights, Mississauga, Peel County, Ontario, Canada, L5M 1W7

Gross Living Area: 1069 sq. ft

## Level 1 - Below Grade



Space	Area (sq. ft)	Calculation <small>Coordinate Polygon Area Algorithm using inches</small>
Basement (Living area)	724	$-\left((213.4 + 213.4) * (149.5 - 275.5) + (213.4 + 326) * (275.5 - 275.5) + (326 + 326) * (275.5 - 623.2) + (326 + 126.7) * (623.2 - 623.2) + (126.7 + 126.7) * (623.2 - 570.5) + (126.7 + 69.6) * (570.5 - 570.5) + (69.6 + 69.6) * (570.5 - 149.5) + (69.6 + 213.4) * (149.5 - 149.5)\right) * 0.5 * 0.00694$
UTILITY (Non-living area)	99	$-\left((326 + 326) * (149.5 - 275.5) + (326 + 213.4) * (275.5 - 275.5) + (213.4 + 213.4) * (275.5 - 149.5) + (213.4 + 326) * (149.5 - 149.5)\right) * 0.5 * 0.00694$

# 6 Merrydrew Court, Streetsville, Vista Heights, Mississauga, Peel County, Ontario, Canada, L5M 1W7

Gross Living Area: 1069 sq. ft

## Level 1 - Below Grade

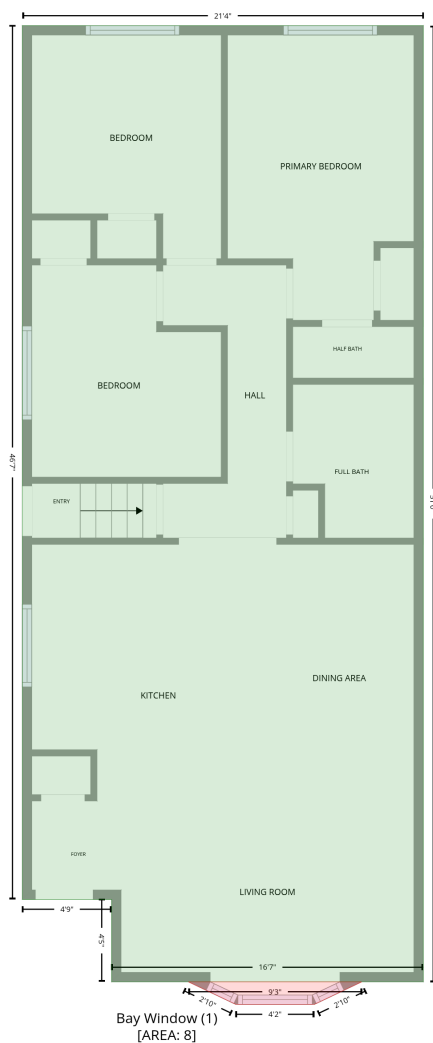
Space	Area (sq. ft)	Calculation <small>Coordinate Polygon Area Algorithm using inches</small>
STORAGE (Non-living area)	246	$-\left(\left(326 + 326\right) * \left(11.3 - 149.5\right) + \left(326 + 69.6\right) * \left(149.5 - 149.5\right) + \left(69.6 + 69.6\right) * \left(149.5 - 11.3\right) + \left(69.6 + 326\right) * \left(11.3 - 11.3\right)\right) * 0.5 * 0.00694$

# 6 Merrydrew Court, Streetsville, Vista Heights, Mississauga, Peel County, Ontario, Canada, L5M 1W7

Gross Living Area: 1069 sq. ft

## Level 2

1st floor  
[AREA: 1069]



Space	Area (sq. ft)	Calculation
1st floor (Living area)	1069	Coordinate Polygon Area Algorithm using inches $-((326 + 326) * (11.3 - 623.2) + (326 + 126.7) * (623.2 - 623.2) + (126.7 + 126.7) * (623.2 - 570.5) + (126.7 + 69.6) * (570.5 - 570.5) + (69.6 + 69.6) * (570.5 - 11.3) + (69.6 + 326) * (11.3 - 11.3)) * 0.5 * 0.00694$
Bay Window (Non-living area)	8	$-((286.7 + 256.3) * (623.2 - 637.7) + (256.3 + 206.1) * (637.7 - 637.7) + (206.1 + 175.7) * (637.7 - 623.2) + (175.7 + 286.7) * (623.2 - 623.2)) * 0.5 * 0.00694$