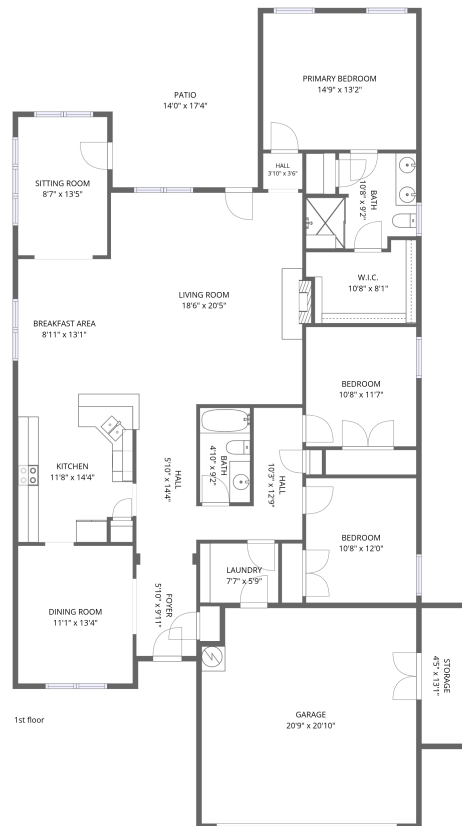


Home data report

# 254 Altamira Drive, Roanoke, Botetourt County, Virginia, United States, 24019



**Total Area: 2391 sq. ft**

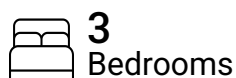
1st Floor: 2391 sq. ft

Excluded: Storage 58 sq. ft, Patio 243 sq. ft, Walls: 151 sq. ft

## Property summary



**1** Floors



**3** Bedrooms



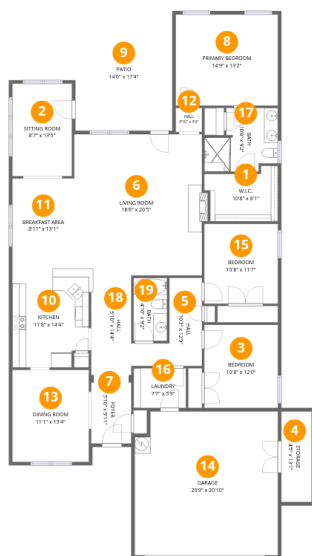
**2** Bathrooms



**1** Garages

Home data report

254 Altamira Drive, Roanoke, Botetourt County, Virginia, United States, 24019



Room dimensions

Floor 1

Total:2391sqft Excluded: 301sqft

#		Dimensions	sqft	Counted as living area
1	W.I.C.	10'8" x 8'1"	72 sq. ft	Yes
2	Sitting Room	8'7" x 13'5"	115 sq. ft	Yes
3	Bedroom	10'8" x 12'0"	128 sq. ft	Yes
4	Storage	4'5" x 13'1"	58 sq. ft	No
5	Hall	10'3" x 12'9"	78 sq. ft	Yes
6	Living Room	18'6" x 20'5"	379 sq. ft	Yes
7	Foyer	5'10" x 9'11"	58 sq. ft	Yes
8	Primary Bedroom	14'9" x 13'2"	195 sq. ft	Yes
9	Patio	14'0" x 17'4"	243 sq. ft	No
10	Kitchen	11'8" x 14'4"	155 sq. ft	Yes
11	Breakfast Area	8'11" x 13'1"	117 sq. ft	Yes

Home data report

**254 Altamira Drive, Roanoke, Botetourt County, Virginia, United States, 24019**

#		Dimensions	sqft	Counted as living area
12	Hall	3'10" x 3'6"	13 sq. ft	Yes
13	Dining Room	11'1" x 13'4"	148 sq. ft	Yes
14	Garage	20'9" x 20'10"	423 sq. ft	Yes
15	Bedroom	10'8" x 11'7"	123 sq. ft	Yes
16	Laundry	7'7" x 5'9"	43 sq. ft	Yes
17	Bath	10'8" x 9'2"	81 sq. ft	Yes
18	Hall	5'10" x 14'4"	83 sq. ft	Yes
19	Bath	4'10" x 9'2"	44 sq. ft	Yes

## 1 Floor 1 - W.I.C.



Dimensions: 10'8" x 8'1"  
Area: 72 sq. ft  
Counted as living area: Yes

Heated: Yes  
Finished: Yes  
Enclosed: Yes  
Contiguous: Yes  
Permitted: Yes  
Wet space: No  
Addition: No  
Conversion: No

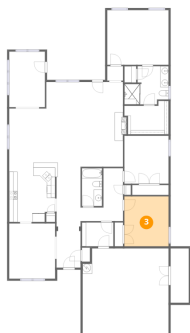
## 2 Floor 1 - Sitting Room



Dimensions: 8'7" x 13'5"  
Area: 115 sq. ft  
Counted as living area: Yes

Heated: Yes  
Finished: Yes  
Enclosed: Yes  
Contiguous: Yes  
Permitted: Yes  
Wet space: No  
Addition: No  
Conversion: No

### 3 Floor 1 - Bedroom



Dimensions: 10'8" x 12'0"  
Area: 128 sq. ft  
Counted as living area: Yes

Heated: Yes  
Finished: Yes  
Enclosed: Yes  
Contiguous: Yes  
Permitted: Yes  
Wet space: No  
Addition: No  
Conversion: No

### 4 Floor 1 - Storage



Dimensions: 4'5" x 13'1"  
Area: 58 sq. ft  
Counted as living area: No

Heated: No  
Finished: Yes  
Enclosed: No  
Contiguous: Yes  
Permitted: Yes  
Wet space: No  
Addition: No  
Conversion: No

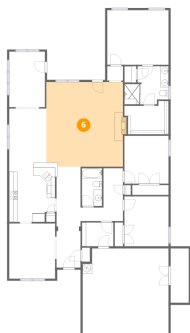
### 5 Floor 1 - Hall



Dimensions: 10'3" x 12'9"  
Area: 78 sq. ft  
Counted as living area: Yes

Heated: Yes  
Finished: Yes  
Enclosed: Yes  
Contiguous: Yes  
Permitted: Yes  
Wet space: No  
Addition: No  
Conversion: No

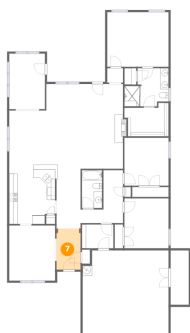
## 6 Floor 1 - Living Room



Dimensions: 18'6" x 20'5"  
Area: 379 sq. ft  
Counted as living area: Yes

Heated: Yes  
Finished: Yes  
Enclosed: Yes  
Contiguous: Yes  
Permitted: Yes  
Wet space: No  
Addition: No  
Conversion: No

## 7 Floor 1 - Foyer



Dimensions: 5'10" x 9'11"  
Area: 58 sq. ft  
Counted as living area: Yes

Heated: Yes  
Finished: Yes  
Enclosed: Yes  
Contiguous: Yes  
Permitted: Yes  
Wet space: No  
Addition: No  
Conversion: No

## 8 Floor 1 - Primary Bedroom



Dimensions: 14'9" x 13'2"  
Area: 195 sq. ft  
Counted as living area: Yes

Heated: Yes  
Finished: Yes  
Enclosed: Yes  
Contiguous: Yes  
Permitted: Yes  
Wet space: No  
Addition: No  
Conversion: No

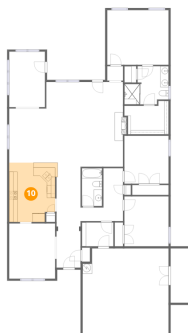
**9** Floor 1 - Patio



Dimensions: 14'0" x 17'4"  
Area: 243 sq. ft  
Counted as living area: No

Heated: No  
Finished: No  
Enclosed: No  
Contiguous: Yes  
Permitted: Yes  
Wet space: No  
Addition: No  
Conversion: No

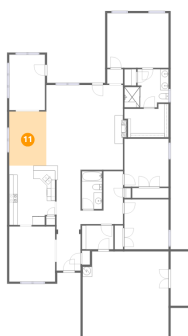
**10** Floor 1 - Kitchen



Dimensions: 11'8" x 14'4"  
Area: 155 sq. ft  
Counted as living area: Yes

Heated: Yes  
Finished: Yes  
Enclosed: Yes  
Contiguous: Yes  
Permitted: Yes  
Wet space: No  
Addition: No  
Conversion: No

**11** Floor 1 - Breakfast Area



Dimensions: 8'11" x 13'1"  
Area: 117 sq. ft  
Counted as living area: Yes

Heated: Yes  
Finished: Yes  
Enclosed: Yes  
Contiguous: Yes  
Permitted: Yes  
Wet space: No  
Addition: No  
Conversion: No

### 12 Floor 1 - Hall



Dimensions: 3'10" x 3'6"  
Area: 13 sq. ft  
Counted as living area: Yes

Heated: Yes  
Finished: Yes  
Enclosed: Yes  
Contiguous: Yes  
Permitted: Yes  
Wet space: No  
Addition: No  
Conversion: No

### 13 Floor 1 - Dining Room



Dimensions: 11'1" x 13'4"  
Area: 148 sq. ft  
Counted as living area: Yes

Heated: Yes  
Finished: Yes  
Enclosed: Yes  
Contiguous: Yes  
Permitted: Yes  
Wet space: No  
Addition: No  
Conversion: No

### 14 Floor 1 - Garage



Dimensions: 20'9" x 20'10"  
Area: 423 sq. ft  
Counted as living area: No

Heated: No  
Finished: Yes  
Enclosed: Yes  
Contiguous: Yes  
Permitted: Yes  
Wet space: No  
Addition: No  
Conversion: No

**15** Floor 1 - Bedroom



Dimensions: 10'8" x 11'7"  
Area: 123 sq. ft  
Counted as living area: Yes

Heated: Yes  
Finished: Yes  
Enclosed: Yes  
Contiguous: Yes  
Permitted: Yes  
Wet space: No  
Addition: No  
Conversion: No

**16** Floor 1 - Laundry



Dimensions: 7'7" x 5'9"  
Area: 43 sq. ft  
Counted as living area: Yes

Heated: Yes  
Finished: Yes  
Enclosed: Yes  
Contiguous: Yes  
Permitted: Yes  
Wet space: No  
Addition: No  
Conversion: No

**17** Floor 1 - Bath



Dimensions: 10'8" x 9'2"  
Area: 81 sq. ft  
Counted as living area: Yes

Heated: Yes  
Finished: Yes  
Enclosed: Yes  
Contiguous: Yes  
Permitted: Yes  
Wet space: Yes  
Addition: No  
Conversion: No

**18** Floor 1 - Hall

---



Dimensions: 5'10" x 14'4"  
Area: 83 sq. ft  
Counted as living area: Yes

Heated: Yes  
Finished: Yes  
Enclosed: Yes  
Contiguous: Yes  
Permitted: Yes  
Wet space: No  
Addition: No  
Conversion: No

**19** Floor 1 - Bath

---



Dimensions: 4'10" x 9'2"  
Area: 44 sq. ft  
Counted as living area: Yes

Heated: Yes  
Finished: Yes  
Enclosed: Yes  
Contiguous: Yes  
Permitted: Yes  
Wet space: Yes  
Addition: No  
Conversion: No