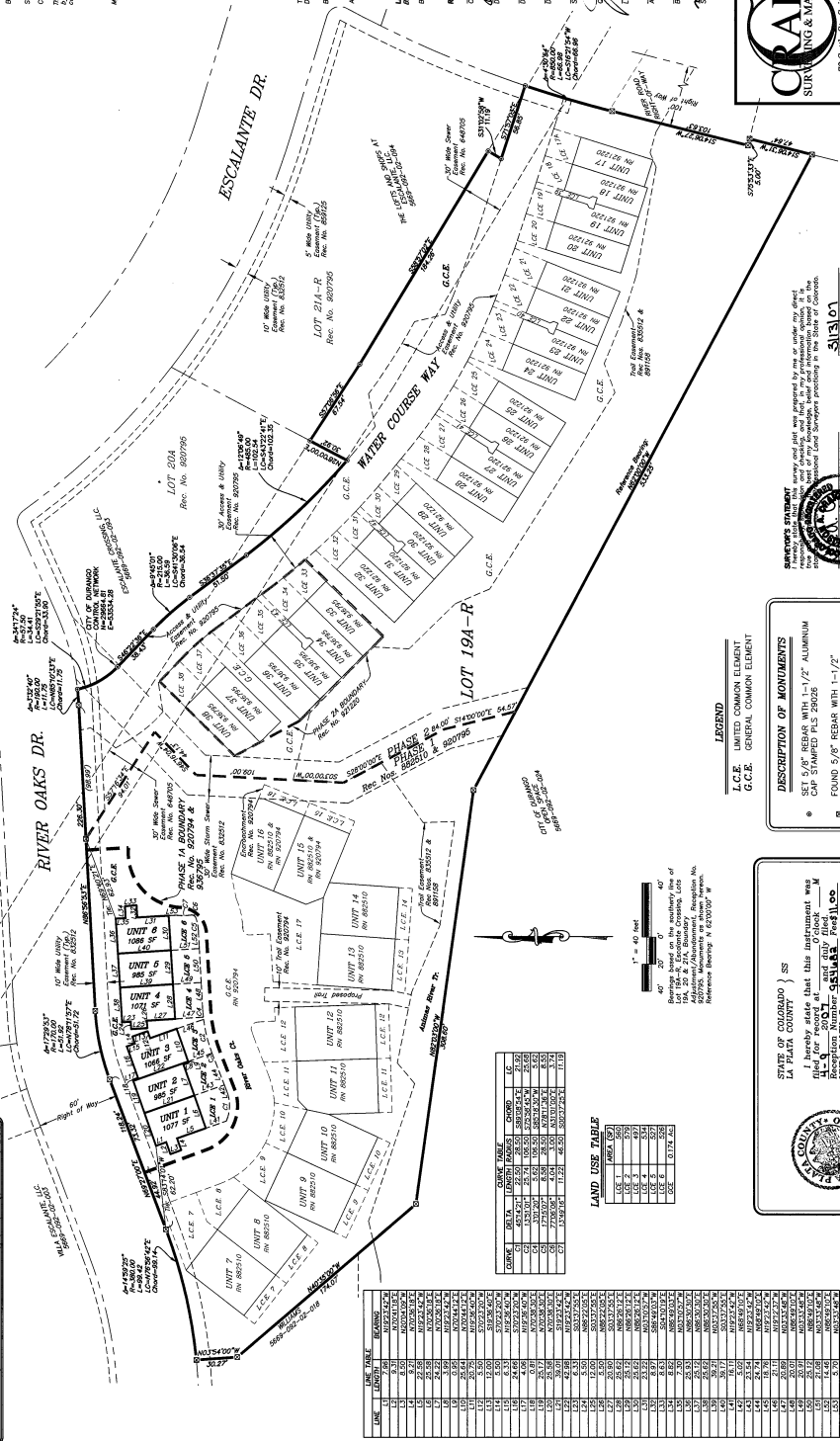
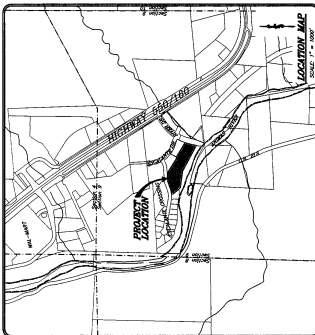


ESCALANTE CROSSING LOT 19A-R, PHASE 1A (Units 1-6) RIVERWALK AT ESCALANTE TOWNHOMES AS-BUILT PLAT

Located in Section 9, Township 34 North, Range 9 West, N.M.P.M.



GENERAL NOTES:
1. The plat is hereby executed by the following parties:
MAYNARD'S NEW LLC, L.L.C. (MAYNARD'S NEW LLC)
By: *[Signature]*
SIGNED: _____
DATE: _____
2. The plat is hereby executed by the following parties:
MAYNARD'S NEW LLC, L.L.C. (MAYNARD'S NEW LLC)
By: *[Signature]*
SIGNED: _____
DATE: _____

THE PLAT IS HEREBY EXECUTED BY THE FOLLOWING PARTIES:
MAYNARD'S NEW LLC, L.L.C. (MAYNARD'S NEW LLC)
By: *[Signature]*
SIGNED: _____
DATE: _____
3. The plat is hereby executed by the following parties:
MAYNARD'S NEW LLC, L.L.C. (MAYNARD'S NEW LLC)
By: *[Signature]*
SIGNED: _____
DATE: _____

THIS PLAT IS HEREBY EXECUTED BY THE FOLLOWING PARTIES:
MAYNARD'S NEW LLC, L.L.C. (MAYNARD'S NEW LLC)
By: *[Signature]*
SIGNED: _____
DATE: _____

THIS PLAT IS HEREBY EXECUTED BY THE FOLLOWING PARTIES:
MAYNARD'S NEW LLC, L.L.C. (MAYNARD'S NEW LLC)
By: *[Signature]*
SIGNED: _____
DATE: _____

THIS PLAT IS HEREBY EXECUTED BY THE FOLLOWING PARTIES:
MAYNARD'S NEW LLC, L.L.C. (MAYNARD'S NEW LLC)
By: *[Signature]*
SIGNED: _____
DATE: _____

THIS PLAT IS HEREBY EXECUTED BY THE FOLLOWING PARTIES:
MAYNARD'S NEW LLC, L.L.C. (MAYNARD'S NEW LLC)
By: *[Signature]*
SIGNED: _____
DATE: _____

LAND USE TABLE

| UNIT | AREA (SQ FT) | AREA (SQ YD) | PERCENT |
|---------|--------------|--------------|---------|
| UNIT 1 | 1,200 | 138 | 1.00 |
| UNIT 2 | 1,200 | 138 | 1.00 |
| UNIT 3 | 1,200 | 138 | 1.00 |
| UNIT 4 | 1,200 | 138 | 1.00 |
| UNIT 5 | 1,200 | 138 | 1.00 |
| UNIT 6 | 1,200 | 138 | 1.00 |
| UNIT 7 | 1,200 | 138 | 1.00 |
| UNIT 8 | 1,200 | 138 | 1.00 |
| UNIT 9 | 1,200 | 138 | 1.00 |
| UNIT 10 | 1,200 | 138 | 1.00 |
| UNIT 11 | 1,200 | 138 | 1.00 |
| UNIT 12 | 1,200 | 138 | 1.00 |
| UNIT 13 | 1,200 | 138 | 1.00 |
| UNIT 14 | 1,200 | 138 | 1.00 |
| UNIT 15 | 1,200 | 138 | 1.00 |
| UNIT 16 | 1,200 | 138 | 1.00 |
| UNIT 17 | 1,200 | 138 | 1.00 |
| UNIT 18 | 1,200 | 138 | 1.00 |

LEGEND
 L.C.E. LIMITED COMMON ELEMENT
 G.C.E. GENERAL COMMON ELEMENT
DESCRIPTION OF MONUMENTS
 SET 5/8" REBAR WITH 1-1/2" ALUMINUM CAP STAMPED PLS 28005
 FOUND 5/8" REBAR WITH 1-1/2" ALUMINUM CAP STAMPED PLS 22374

STATE OF COLORADO }
 LA PLATA COUNTY } SS
 I hereby state that this instrument was filed for record on _____ A.M. on _____ 2008 and duly filed.
 My commission expires _____
 By: *[Signature]* Deputy

LA PLATA COUNTY
 CLERK
 My commission expires _____

CRAIG SURVEYING & MAPPING
 72 Santa Fe Suite 1
 Durango, Colorado 81303
 (970) 259-2887
 (970) 259-5322 (fax)

**ESCALANTE CROSSING LOT 19A-R, PHASE 1A (Units 1-6)
RIVERWALK AT ESCALANTE TOWNHOMES
AS-BUILT PLAT**
 MAYNARD'S NEW LLC
 Located in Section 9, Township 34 North, Range 9 West, N.M.P.M.
 Prepared By: BA
 Checked By: AAC
 Date: 3/15/07
 Project No.: 03039
 Sheet 1 of 1