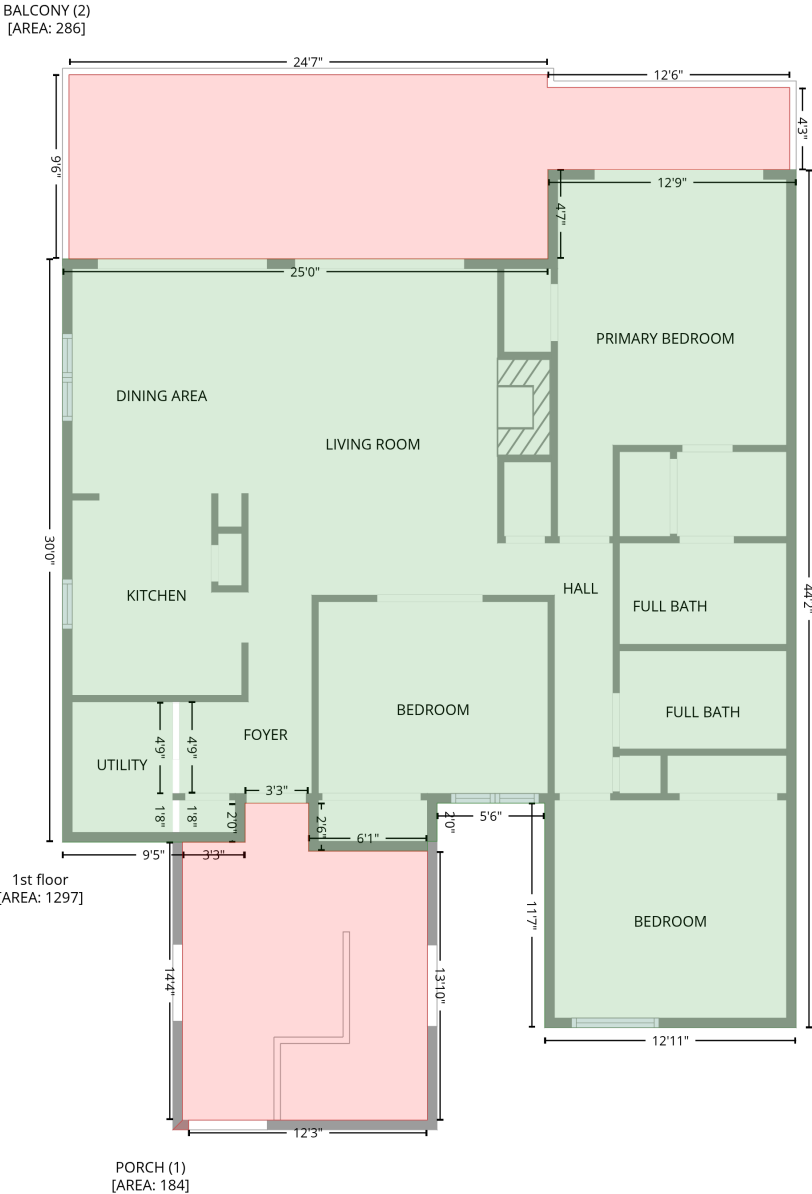


55 The Moorings, Clarksville, Mecklenburg County, Virginia, United States, 23927

Gross Living Area: 1297 sq. ft

Level 1



55 The Moorings, Clarksville, Mecklenburg County, Virginia, United States, 23927

Gross Living Area: 1297 sq. ft

Level 1

Space	Area (sq. ft)	Calculation <small>Coordinate Polygon Area Algorithm using inches</small>
1st floor (Living area)	1297	$-\left((625.4 + 625.4) * (-44.7 - 484.9) + (625.4 + 470.1) * (484.9 - 484.9) + (470.1 + 470.1) * (484.9 - 346.3) + (470.1 + 403.7) * (346.3 - 346.3) + (403.7 + 403.7) * (346.3 - 369.8) + (403.7 + 397.7) * (369.8 - 369.8) + (397.7 + 397.7) * (369.8 - 375.8) + (397.7 + 324.4) * (375.8 - 375.8) + (324.4 + 324.4) * (375.8 - 346.3) + (324.4 + 285.2) * (346.3 - 346.3) + (285.2 + 285.2) * (346.3 - 370.3) + (285.2 + 172.5) * (370.3 - 370.3) + (172.5 + 172.5) * (370.3 - 10.4) + (172.5 + 472.1) * (10.4 - 10.4) + (472.1 + 472.1) * (10.4 - -44.7) + (472.1 + 625.4) * (-44.7 - -44.7)) * 0.5 * 0.00694 + -\left((244.6 + 240.6) * (344.3 - 344.3) + (240.6 + 240.6) * (344.3 - 364.3) + (240.6 + 244.6) * (364.3 - 364.3) + (244.6 + 244.6) * (364.3 - 344.3)\right) * 0.5 * 0.00694 + -\left((244.6 + 240.6) * (283.7 - 283.7) + (240.6 + 240.6) * (283.7 - 340.3) + (240.6 + 244.6) * (340.3 - 340.3) + (244.6 + 244.6) * (340.3 - 283.7)\right) * 0.5 * 0.00694$
PORCH (Non-living area)	184	$-\left((324.4 + 324.4) * (346.3 - 375.8) + (324.4 + 397.7) * (375.8 - 375.8) + (397.7 + 397.7) * (375.8 - 541.9) + (397.7 + 250.4) * (541.9 - 541.9) + (250.4 + 250.4) * (541.9 - 547.9) + (250.4 + 240.6) * (547.9 - 547.9) + (240.6 + 246.6) * (547.9 - 541.9) + (246.6 + 246.6) * (541.9 - 370.3) + (246.6 + 285.2) * (370.3 - 370.3) + (285.2 + 285.2) * (370.3 - 346.3) + (285.2 + 324.4) * (346.3 - 346.3)\right) * 0.5 * 0.00694$
BALCONY (Non-living area)	286	$-\left((471.7 + 471.7) * (-103.3 - -95.4) + (471.7 + 621.3) * (-95.4 - -95.4) + (621.3 + 621.3) * (-95.4 - -44.7) + (621.3 + 472.1) * (-44.7 - -44.7) + (472.1 + 472.1) * (-44.7 - 10.4) + (472.1 + 176.5) * (10.4 - 10.4) + (176.5 + 176.5) * (10.4 - -103.3) + (176.5 + 471.7) * (-103.3 - -103.3)\right) * 0.5 * 0.00694$