

## Home data report

1501 North Street, Geneva, Kane County, Illinois, United States, 60134



**Total Area: 4222 sq. ft**

Basement: 1026 sq. ft, 1st Floor: 1392 sq. ft, 2nd Floor: 1804 sq. ft

Excluded: Utility 212 sq. ft, Garage 474 sq. ft, Storage 126 sq. ft, Embedded window 6 sq. ft, Fireplace 11 sq. ft, Walls: 309 sq. ft

## Property summary



Home data report

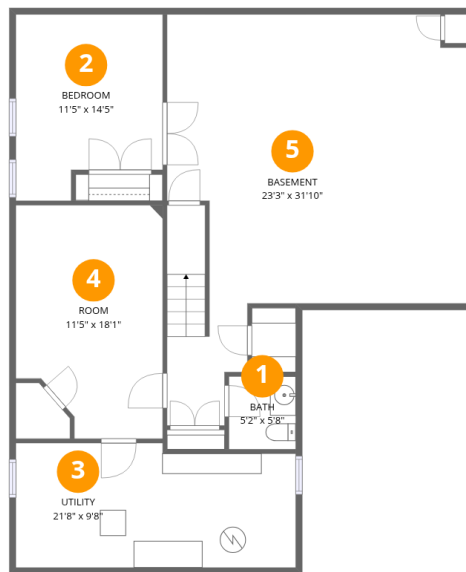
**1501 North Street, Geneva, Kane County, Illinois, United States,  
60134**

 **2**  
Half baths

 **1**  
Garages

## Home data report

1501 North Street, Geneva, Kane County, Illinois, United States, 60134



## Room dimensions

Floor 1 Below grade

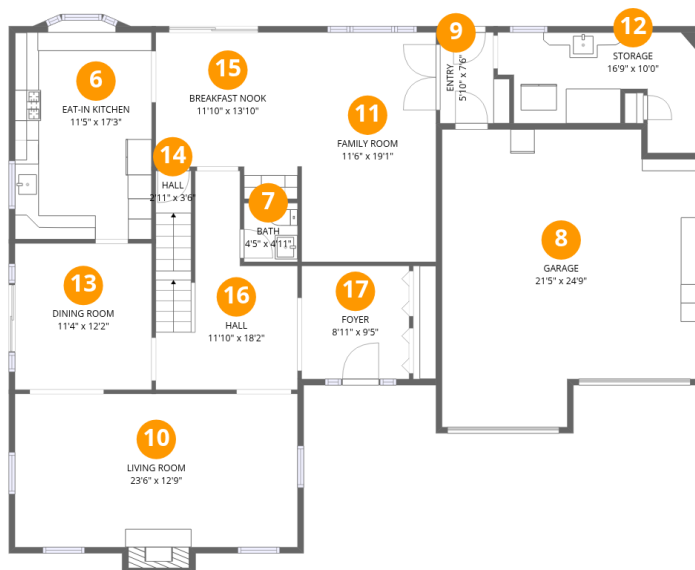
Total:1026sqft

Excluded: 201sqft

#		Dimensions	sqft	Counted as living area
1	Bath	5'2" x 5'8"	29 sq. ft	Yes
2	Bedroom	11'5" x 14'5"	164 sq. ft	Yes
3	Utility	21'8" x 9'8"	209 sq. ft	No
4	Room	11'5" x 18'1"	206 sq. ft	Yes
5	Basement	23'3" x 31'10"	741 sq. ft	Yes

Home data report

1501 North Street, Geneva, Kane County, Illinois, United States, 60134



## Room dimensions

Floor 2

Total:1392sqft Excluded: 617sqft

#		Dimensions	sqft	Counted as living area
6	Eat-in Kitchen	11'5" x 17'3"	196 sq. ft	Yes
7	Bath	4'5" x 4'11"	22 sq. ft	Yes
8	Garage	21'5" x 24'9"	529 sq. ft	No
9	Entry	5'10" x 7'6"	44 sq. ft	Yes
10	Living Room	23'6" x 12'9"	300 sq. ft	Yes
11	Family Room	11'6" x 19'1"	220 sq. ft	Yes
12	Storage	16'9" x 10'0"	168 sq. ft	No
13	Dining Room	11'4" x 12'2"	138 sq. ft	Yes
14	Hall	2'11" x 3'6"	10 sq. ft	Yes
15	Breakfast Nook	11'10" x 13'10"	164 sq. ft	Yes
16	Hall	11'10" x 18'2"	215 sq. ft	Yes

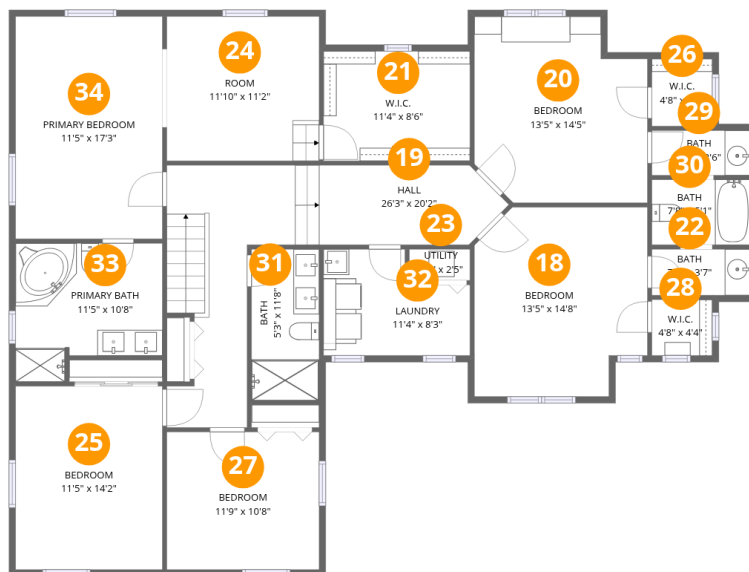
Home data report

**1501 North Street, Geneva, Kane County, Illinois, United States,  
60134**

#		Dimensions	sqft	Counted as living area
17	Foyer	8'11" x 9'5"	84 sq. ft	Yes

Home data report

1501 North Street, Geneva, Kane County, Illinois, United States, 60134



### Room dimensions

Floor 3

Total:1804sqft Excluded: 11sqft

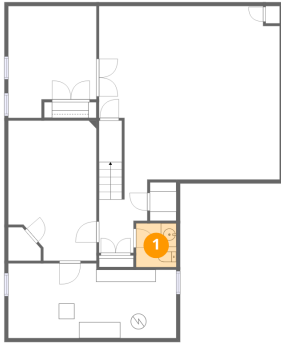
#		Dimensions	sqft	Counted as living area
18	Bedroom	13'5" x 14'8"	197 sq. ft	Yes
19	Hall	26'3" x 20'2"	530 sq. ft	Yes
20	Bedroom	13'5" x 14'5"	194 sq. ft	Yes
21	W.I.C.	11'4" x 8'6"	96 sq. ft	Yes
22	Bath	7'8" x 3'7"	27 sq. ft	Yes
23	Utility	4'8" x 2'5"	11 sq. ft	No
24	Room	11'10" x 11'2"	132 sq. ft	Yes
25	Bedroom	11'5" x 14'2"	161 sq. ft	Yes
26	W.I.C.	4'8" x 5'2"	24 sq. ft	Yes
27	Bedroom	11'9" x 10'8"	125 sq. ft	Yes
28	W.I.C.	4'8" x 4'4"	20 sq. ft	Yes

Home data report

**1501 North Street, Geneva, Kane County, Illinois, United States,  
60134**

#		Dimensions	sqft	Counted as living area
29	Bath	7'8" x 3'6"	27 sq. ft	Yes
30	Bath	7'8" x 5'1"	39 sq. ft	Yes
31	Bath	5'3" x 11'8"	61 sq. ft	Yes
32	Laundry	11'4" x 8'3"	93 sq. ft	Yes
33	Primary Bath	11'5" x 10'8"	122 sq. ft	Yes
34	Primary Bedroom	11'5" x 17'3"	196 sq. ft	Yes

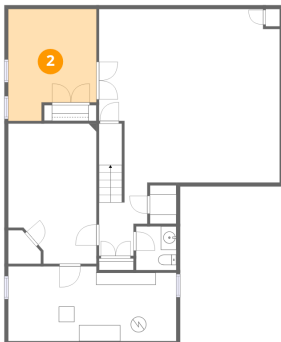
## 1 Floor 1 - Bath



Dimensions: 5'2" x 5'8"  
Area: 29 sq. ft  
Counted as living area: Yes

Heated: Yes  
Finished: Yes  
Enclosed: Yes  
Contiguous: Yes  
Permitted: Yes  
Wet space: Yes  
Addition: No  
Conversion: No

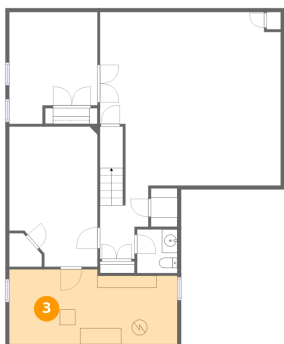
## 2 Floor 1 - Bedroom



Dimensions: 11'5" x 14'5"  
Area: 164 sq. ft  
Counted as living area: Yes

Heated: Yes  
Finished: Yes  
Enclosed: Yes  
Contiguous: Yes  
Permitted: Yes  
Wet space: No  
Addition: No  
Conversion: No

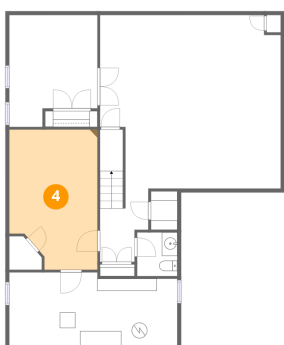
### 3 Floor 1 - Utility



Dimensions: 21'8" x 9'8"  
Area: 209 sq. ft  
Counted as living area: No

Heated: Yes  
Finished: No  
Enclosed: Yes  
Contiguous: Yes  
Permitted: Yes  
Wet space: No  
Addition: No  
Conversion: No

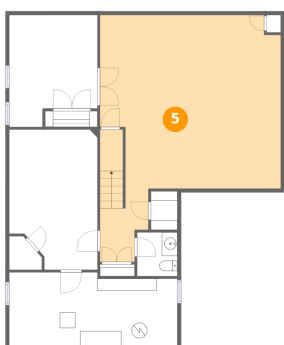
### 4 Floor 1 - Room



Dimensions: 11'5" x 18'1"  
Area: 206 sq. ft  
Counted as living area: Yes

Heated: Yes  
Finished: Yes  
Enclosed: Yes  
Contiguous: Yes  
Permitted: Yes  
Wet space: No  
Addition: No  
Conversion: No

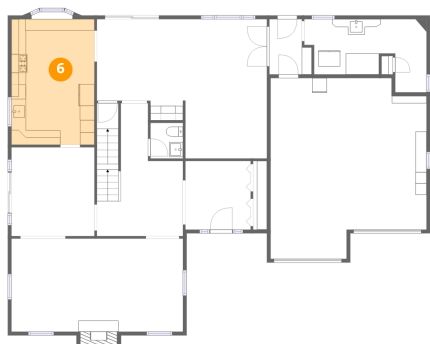
### 5 Floor 1 - Basement



Dimensions: 23'3" x 31'10"  
Area: 741 sq. ft  
Counted as living area: Yes

Heated: Yes  
Finished: Yes  
Enclosed: Yes  
Contiguous: Yes  
Permitted: Yes  
Wet space: No  
Addition: No  
Conversion: No

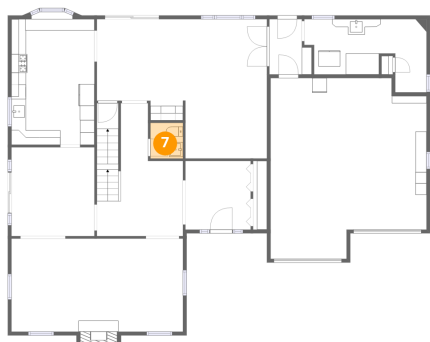
### 6 Floor 2 - Eat-in Kitchen



Dimensions: 11'5" x 17'3"  
Area: 196 sq. ft  
Counted as living area: Yes

Heated: Yes  
Finished: Yes  
Enclosed: Yes  
Contiguous: Yes  
Permitted: Yes  
Wet space: No  
Addition: No  
Conversion: No

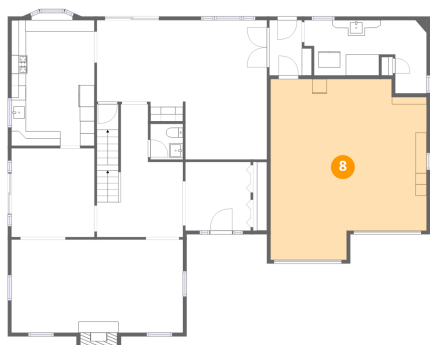
### 7 Floor 2 - Bath



Dimensions: 4'5" x 4'11"  
Area: 22 sq. ft  
Counted as living area: Yes

Heated: Yes  
Finished: Yes  
Enclosed: Yes  
Contiguous: Yes  
Permitted: Yes  
Wet space: Yes  
Addition: No  
Conversion: No

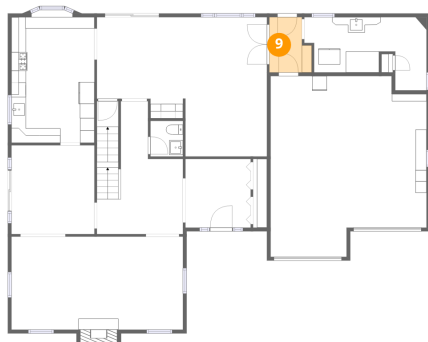
### 8 Floor 2 - Garage



Dimensions: 21'5" x 24'9"  
Area: 529 sq. ft  
Counted as living area: No

Heated: No  
Finished: No  
Enclosed: Yes  
Contiguous: Yes  
Permitted: Yes  
Wet space: No  
Addition: No  
Conversion: No

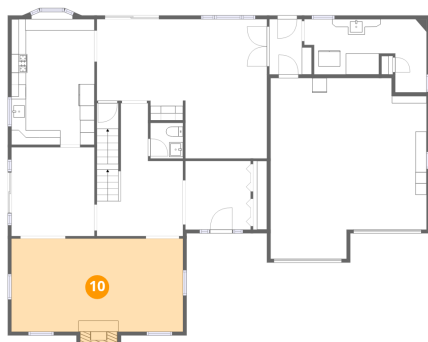
### 9 Floor 2 - Entry



Dimensions: 5'10" x 7'6"  
Area: 44 sq. ft  
Counted as living area: Yes

Heated: Yes  
Finished: Yes  
Enclosed: Yes  
Contiguous: Yes  
Permitted: Yes  
Wet space: No  
Addition: No  
Conversion: No

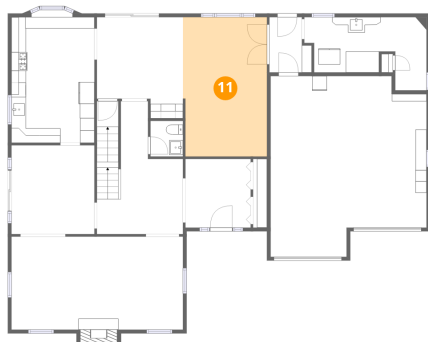
### 10 Floor 2 - Living Room



Dimensions: 23'6" x 12'9"  
Area: 300 sq. ft  
Counted as living area: Yes

Heated: Yes  
Finished: Yes  
Enclosed: Yes  
Contiguous: Yes  
Permitted: Yes  
Wet space: No  
Addition: No  
Conversion: No

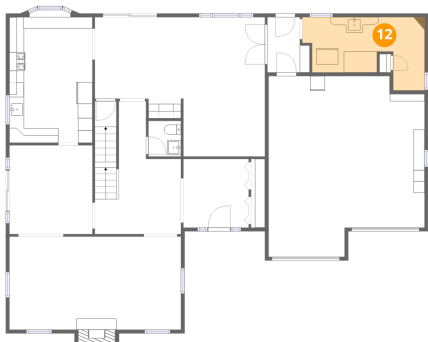
### 11 Floor 2 - Family Room



Dimensions: 11'6" x 19'1"  
Area: 220 sq. ft  
Counted as living area: Yes

Heated: Yes  
Finished: Yes  
Enclosed: Yes  
Contiguous: Yes  
Permitted: Yes  
Wet space: No  
Addition: No  
Conversion: No

### 12 Floor 2 - Storage



Dimensions: 16'9" x 10'0"  
Area: 168 sq. ft  
Counted as living area: No

Heated: No  
Finished: Yes  
Enclosed: No  
Contiguous: Yes  
Permitted: Yes  
Wet space: No  
Addition: No  
Conversion: No

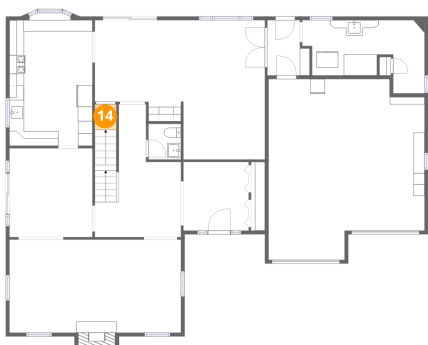
### 13 Floor 2 - Dining Room



Dimensions: 11'4" x 12'2"  
Area: 138 sq. ft  
Counted as living area: Yes

Heated: Yes  
Finished: Yes  
Enclosed: Yes  
Contiguous: Yes  
Permitted: Yes  
Wet space: No  
Addition: No  
Conversion: No

### 14 Floor 2 - Hall



Dimensions: 2'11" x 3'6"  
Area: 10 sq. ft  
Counted as living area: Yes

Heated: Yes  
Finished: Yes  
Enclosed: Yes  
Contiguous: Yes  
Permitted: Yes  
Wet space: No  
Addition: No  
Conversion: No

### 15 Floor 2 - Breakfast Nook



Dimensions: 11'10" x 13'10"

Area: 164 sq. ft

Counted as living area: Yes

Heated: Yes  
Finished: Yes  
Enclosed: Yes  
Contiguous: Yes  
Permitted: Yes  
Wet space: No  
Addition: No  
Conversion: No

### 16 Floor 2 - Hall



Dimensions: 11'10" x 18'2"

Area: 215 sq. ft

Counted as living area: Yes

Heated: Yes  
Finished: Yes  
Enclosed: Yes  
Contiguous: Yes  
Permitted: Yes  
Wet space: No  
Addition: No  
Conversion: No

### 17 Floor 2 - Foyer



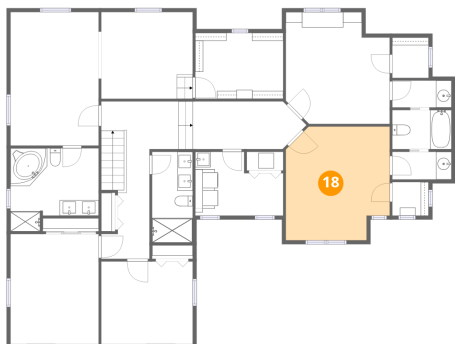
Dimensions: 8'11" x 9'5"

Area: 84 sq. ft

Counted as living area: Yes

Heated: Yes  
Finished: Yes  
Enclosed: Yes  
Contiguous: Yes  
Permitted: Yes  
Wet space: No  
Addition: No  
Conversion: No

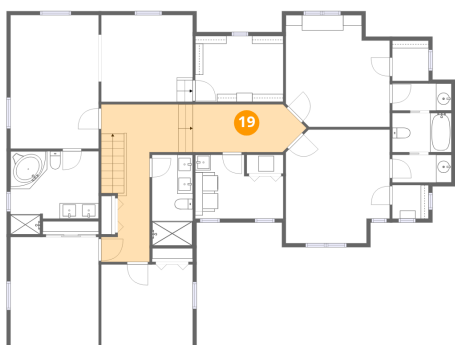
**18** Floor 3 - Bedroom



Dimensions: 13'5" x 14'8"  
Area: 197 sq. ft  
Counted as living area: Yes

Heated: Yes  
Finished: Yes  
Enclosed: Yes  
Contiguous: Yes  
Permitted: Yes  
Wet space: No  
Addition: No  
Conversion: No

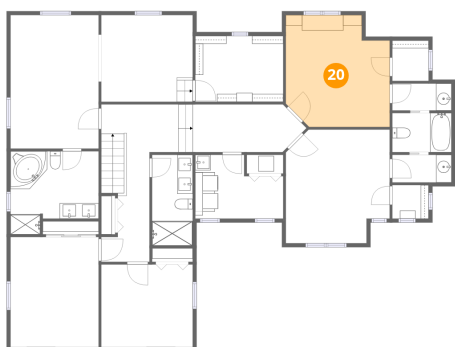
**19** Floor 3 - Hall



Dimensions: 26'3" x 20'2"  
Area: 530 sq. ft  
Counted as living area: Yes

Heated: Yes  
Finished: Yes  
Enclosed: Yes  
Contiguous: Yes  
Permitted: Yes  
Wet space: No  
Addition: No  
Conversion: No

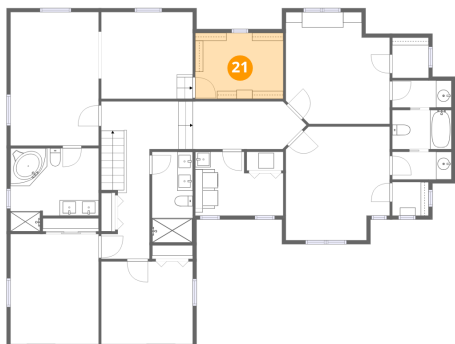
**20** Floor 3 - Bedroom



Dimensions: 13'5" x 14'5"  
Area: 194 sq. ft  
Counted as living area: Yes

Heated: Yes  
Finished: Yes  
Enclosed: Yes  
Contiguous: Yes  
Permitted: Yes  
Wet space: No  
Addition: No  
Conversion: No

**21** Floor 3 - W.I.C.



Dimensions: 11'4" x 8'6"  
Area: 96 sq. ft  
Counted as living area: Yes

Heated: Yes  
Finished: Yes  
Enclosed: Yes  
Contiguous: Yes  
Permitted: Yes  
Wet space: No  
Addition: No  
Conversion: No

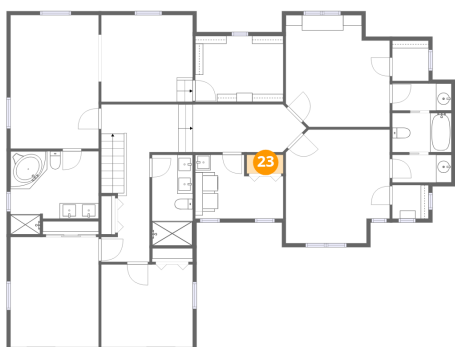
**22** Floor 3 - Bath



Dimensions: 7'8" x 3'7"  
Area: 27 sq. ft  
Counted as living area: Yes

Heated: Yes  
Finished: Yes  
Enclosed: Yes  
Contiguous: Yes  
Permitted: Yes  
Wet space: Yes  
Addition: No  
Conversion: No

**23** Floor 3 - Utility



Dimensions: 4'8" x 2'5"  
Area: 11 sq. ft  
Counted as living area: No

Heated: Yes  
Finished: No  
Enclosed: Yes  
Contiguous: Yes  
Permitted: Yes  
Wet space: No  
Addition: No  
Conversion: No

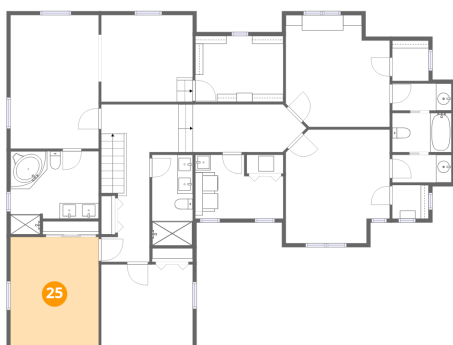
**24** Floor 3 - Room



Dimensions: 11'10" x 11'2"  
Area: 132 sq. ft  
Counted as living area: Yes

Heated: Yes  
Finished: Yes  
Enclosed: Yes  
Contiguous: Yes  
Permitted: Yes  
Wet space: No  
Addition: No  
Conversion: No

**25** Floor 3 - Bedroom



Dimensions: 11'5" x 14'2"  
Area: 161 sq. ft  
Counted as living area: Yes

Heated: Yes  
Finished: Yes  
Enclosed: Yes  
Contiguous: Yes  
Permitted: Yes  
Wet space: No  
Addition: No  
Conversion: No

**26** Floor 3 - W.I.C.



Dimensions: 4'8" x 5'2"  
Area: 24 sq. ft  
Counted as living area: Yes

Heated: Yes  
Finished: Yes  
Enclosed: Yes  
Contiguous: Yes  
Permitted: Yes  
Wet space: No  
Addition: No  
Conversion: No

### 27 Floor 3 - Bedroom



Dimensions: 11'9" x 10'8"  
Area: 125 sq. ft  
Counted as living area: Yes

Heated: Yes  
Finished: Yes  
Enclosed: Yes  
Contiguous: Yes  
Permitted: Yes  
Wet space: No  
Addition: No  
Conversion: No

### 28 Floor 3 - W.I.C.



Dimensions: 4'8" x 4'4"  
Area: 20 sq. ft  
Counted as living area: Yes

Heated: Yes  
Finished: Yes  
Enclosed: Yes  
Contiguous: Yes  
Permitted: Yes  
Wet space: No  
Addition: No  
Conversion: No

### 29 Floor 3 - Bath



Dimensions: 7'8" x 3'6"  
Area: 27 sq. ft  
Counted as living area: Yes

Heated: Yes  
Finished: Yes  
Enclosed: Yes  
Contiguous: Yes  
Permitted: Yes  
Wet space: Yes  
Addition: No  
Conversion: No

**30** Floor 3 - Bath



Dimensions: 7'8" x 5'1"  
Area: 39 sq. ft  
Counted as living area: Yes

Heated: Yes  
Finished: Yes  
Enclosed: Yes  
Contiguous: Yes  
Permitted: Yes  
Wet space: Yes  
Addition: No  
Conversion: No

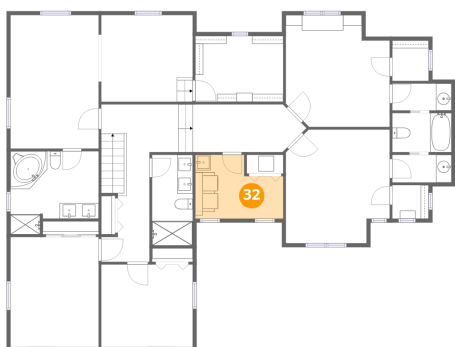
**31** Floor 3 - Bath



Dimensions: 5'3" x 11'8"  
Area: 61 sq. ft  
Counted as living area: Yes

Heated: Yes  
Finished: Yes  
Enclosed: Yes  
Contiguous: Yes  
Permitted: Yes  
Wet space: Yes  
Addition: No  
Conversion: No

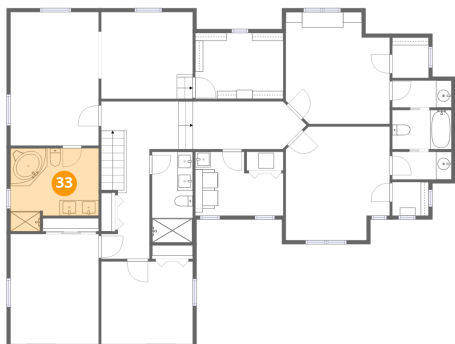
**32** Floor 3 - Laundry



Dimensions: 11'4" x 8'3"  
Area: 93 sq. ft  
Counted as living area: Yes

Heated: Yes  
Finished: Yes  
Enclosed: Yes  
Contiguous: Yes  
Permitted: Yes  
Wet space: No  
Addition: No  
Conversion: No

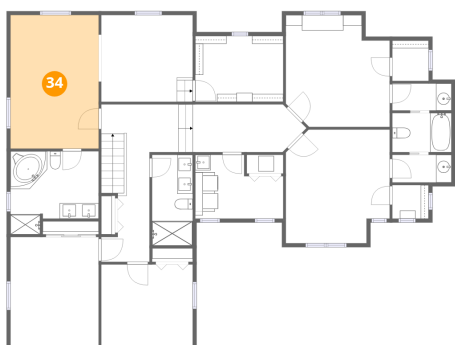
### 33 Floor 3 - Primary Bath



Dimensions: 11'5" x 10'8"  
Area: 122 sq. ft  
Counted as living area: Yes

Heated: Yes  
Finished: Yes  
Enclosed: Yes  
Contiguous: Yes  
Permitted: Yes  
Wet space: Yes  
Addition: No  
Conversion: No

### 34 Floor 3 - Primary Bedroom



Dimensions: 11'5" x 17'3"  
Area: 196 sq. ft  
Counted as living area: Yes

Heated: Yes  
Finished: Yes  
Enclosed: Yes  
Contiguous: Yes  
Permitted: Yes  
Wet space: No  
Addition: No  
Conversion: No