



## Total Area: 2501 sq. ft

1st Floor: 842 sq. ft, 2nd Floor: 1659 sq. ft

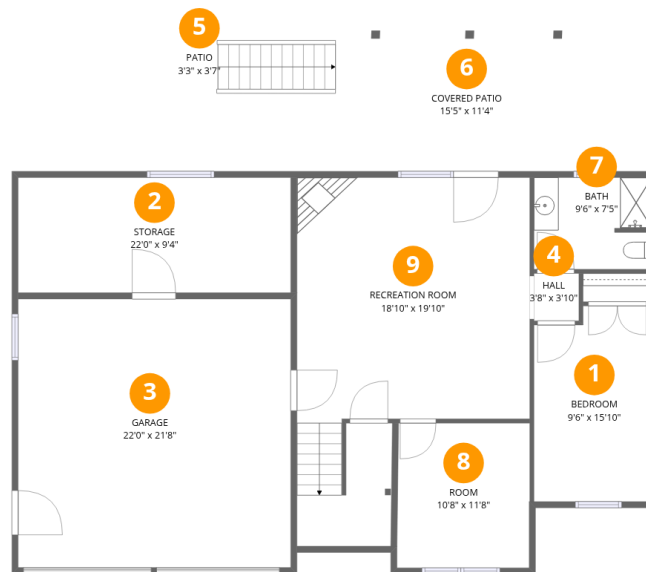
Excluded: Garage 478 sq. ft, Storage 205 sq. ft, Patio 46 sq. ft, Covered patio 176 sq. ft, Deck 196 sq. ft, Walls: 197 sq. ft

## Property summary



# Home data report

## 8013 Amberwood Court, Roanoke, Virginia 24019, United States



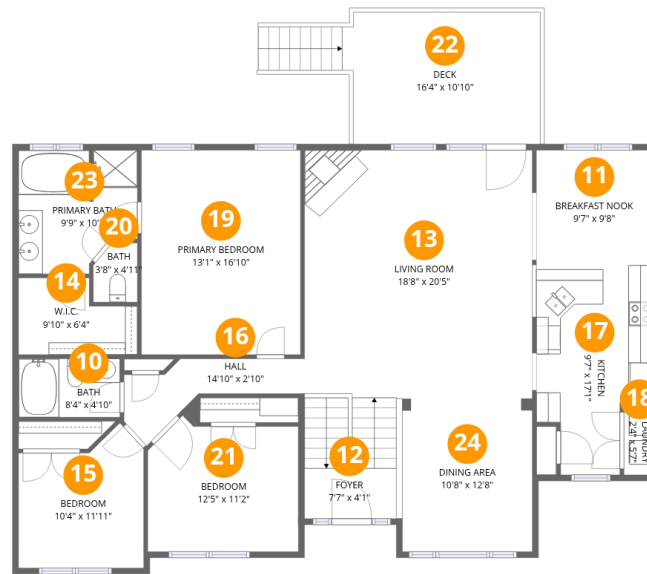
### Room dimensions

Floor 1

Total:842sqft

Excluded: 905sqft

#		Dimensions	sqft	Counted as living area
1	Bedroom	9'6" x 15'10"	151 sq. ft	Yes
2	Storage	22'0" x 9'4"	205 sq. ft	No
3	Garage	22'0" x 21'8"	478 sq. ft	No
4	Hall	3'8" x 3'10"	14 sq. ft	Yes
5	Patio	3'3" x 3'7"	12 sq. ft	No
6	Covered Patio	15'5" x 11'4"	175 sq. ft	No
7	Bath	9'6" x 7'5"	70 sq. ft	Yes
8	Room	10'8" x 11'8"	125 sq. ft	Yes
9	Recreation Room	18'10" x 19'10"	373 sq. ft	Yes



## Room dimensions

Floor 2

Total:1659sqft

Excluded: 196sqft

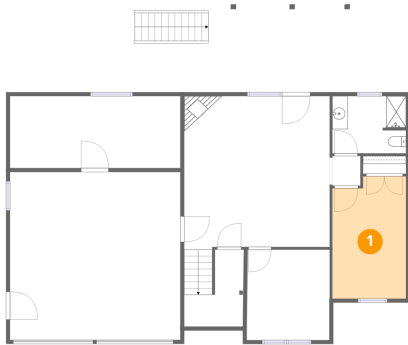
#		Dimensions	sqft	Counted as living area
10	Bath	8'4" x 4'10"	40 sq. ft	Yes
11	Breakfast Nook	9'7" x 9'8"	92 sq. ft	Yes
12	Foyer	7'7" x 4'11"	31 sq. ft	Yes
13	Living Room	18'8" x 20'5"	381 sq. ft	Yes
14	W.I.C.	9'10" x 6'4"	62 sq. ft	Yes
15	Bedroom	10'4" x 11'11"	123 sq. ft	Yes
16	Hall	14'10" x 2'10"	42 sq. ft	Yes
17	Kitchen	9'7" x 17'1"	163 sq. ft	Yes
18	Laundry	2'4" x 5'7"	13 sq. ft	Yes
19	Primary Bedroom	13'1" x 16'10"	221 sq. ft	Yes
20	Bath	3'8" x 4'11"	18 sq. ft	Yes

Home data report

**8013 Amberwood Court, Roanoke, Virginia 24019, United States**

#		Dimensions	sqft	Counted as living area
21	Bedroom	12'5" x 11'2"	139 sq. ft	Yes
22	Deck	16'4" x 10'10"	177 sq. ft	No
23	Primary Bath	9'9" x 10'2"	100 sq. ft	Yes
24	Dining Area	10'8" x 12'8"	136 sq. ft	Yes

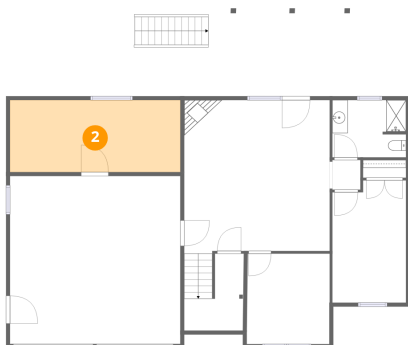
## 1 Floor 1 - Bedroom



Dimensions: 9'6" x 15'10"  
Area: 151 sq. ft  
Counted as living area: Yes

Heated: Yes  
Finished: Yes  
Enclosed: Yes  
Contiguous: Yes  
Permitted: Yes  
Wet space: No  
Addition: No  
Conversion: No

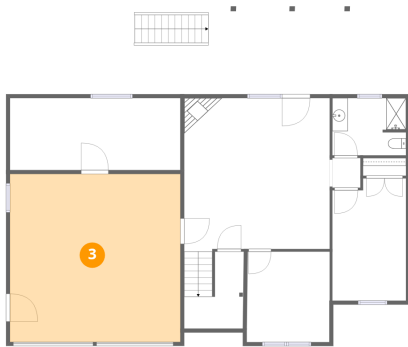
## 2 Floor 1 - Storage



Dimensions: 22'0" x 9'4"  
Area: 205 sq. ft  
Counted as living area: No

Heated: No  
Finished: No  
Enclosed: No  
Contiguous: Yes  
Permitted: Yes  
Wet space: No  
Addition: No  
Conversion: No

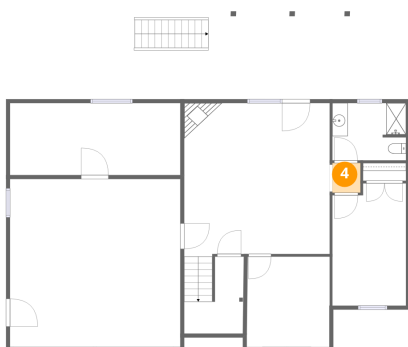
### 3 Floor 1 - Garage



Dimensions: 22'0" x 21'8"  
Area: 478 sq. ft  
Counted as living area: No

Heated: No  
Finished: No  
Enclosed: Yes  
Contiguous: Yes  
Permitted: Yes  
Wet space: No  
Addition: No  
Conversion: No

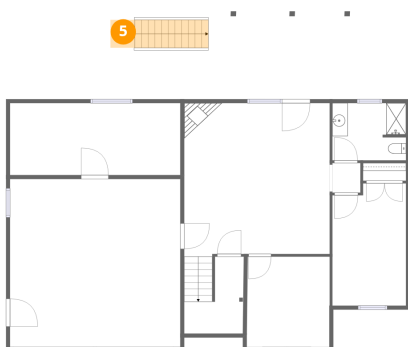
### 4 Floor 1 - Hall



Dimensions: 3'8" x 3'10"  
Area: 14 sq. ft  
Counted as living area: Yes

Heated: Yes  
Finished: Yes  
Enclosed: Yes  
Contiguous: Yes  
Permitted: Yes  
Wet space: No  
Addition: No  
Conversion: No

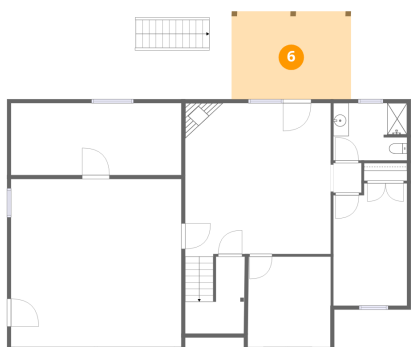
### 5 Floor 1 - Patio



Dimensions: 3'3" x 3'7"  
Area: 12 sq. ft  
Counted as living area: No

Heated: No  
Finished: No  
Enclosed: No  
Contiguous: Yes  
Permitted: Yes  
Wet space: No  
Addition: No  
Conversion: No

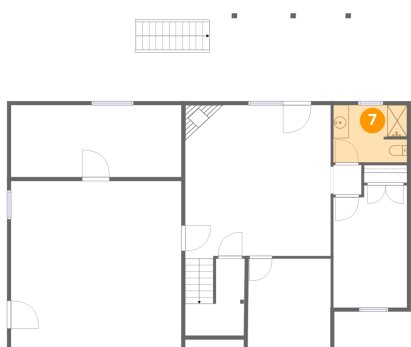
### 6 Floor 1 - Covered Patio



Dimensions: 15'5" x 11'4"  
Area: 175 sq. ft  
Counted as living area: No

Heated: No  
Finished: No  
Enclosed: No  
Contiguous: Yes  
Permitted: Yes  
Wet space: No  
Addition: No  
Conversion: No

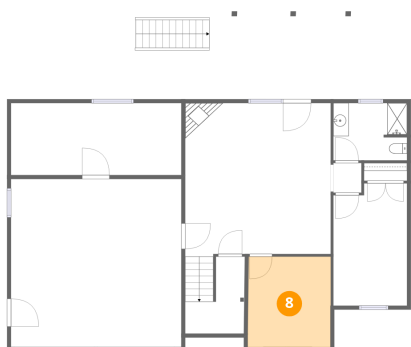
### 7 Floor 1 - Bath



Dimensions: 9'6" x 7'5"  
Area: 70 sq. ft  
Counted as living area: Yes

Heated: Yes  
Finished: Yes  
Enclosed: Yes  
Contiguous: Yes  
Permitted: Yes  
Wet space: Yes  
Addition: No  
Conversion: No

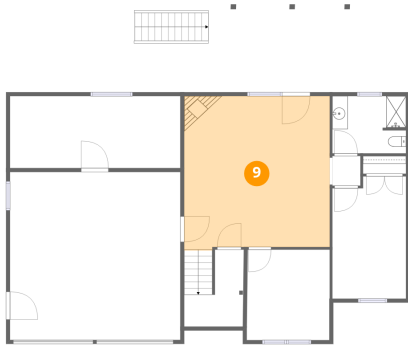
### 8 Floor 1 - Room



Dimensions: 10'8" x 11'8"  
Area: 125 sq. ft  
Counted as living area: Yes

Heated: Yes  
Finished: Yes  
Enclosed: Yes  
Contiguous: Yes  
Permitted: Yes  
Wet space: No  
Addition: No  
Conversion: No

## 9 Floor 1 - Recreation Room



Dimensions: 18'10" x 19'10"  
Area: 373 sq. ft  
Counted as living area: Yes

Heated: Yes  
Finished: Yes  
Enclosed: Yes  
Contiguous: Yes  
Permitted: Yes  
Wet space: No  
Addition: No  
Conversion: No

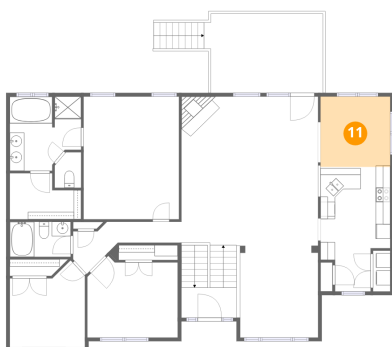
## 10 Floor 2 - Bath



Dimensions: 8'4" x 4'10"  
Area: 40 sq. ft  
Counted as living area: Yes

Heated: Yes  
Finished: Yes  
Enclosed: Yes  
Contiguous: Yes  
Permitted: Yes  
Wet space: Yes  
Addition: No  
Conversion: No

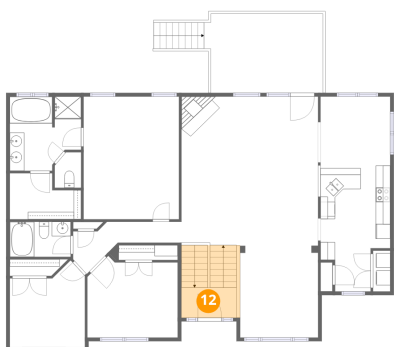
## 11 Floor 2 - Breakfast Nook



Dimensions: 9'7" x 9'8"  
Area: 92 sq. ft  
Counted as living area: Yes

Heated: Yes  
Finished: Yes  
Enclosed: Yes  
Contiguous: Yes  
Permitted: Yes  
Wet space: No  
Addition: No  
Conversion: No

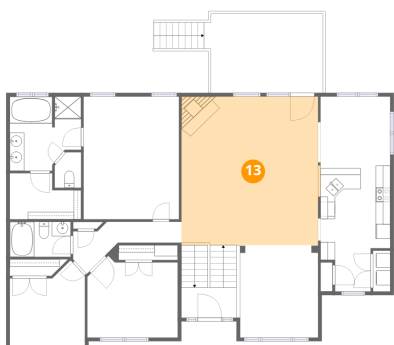
## 12 Floor 2 - Foyer



Dimensions: 7'7" x 4'1"  
Area: 31 sq. ft  
Counted as living area: Yes

Heated: Yes  
Finished: Yes  
Enclosed: Yes  
Contiguous: Yes  
Permitted: Yes  
Wet space: No  
Addition: No  
Conversion: No

## 13 Floor 2 - Living Room



Dimensions: 18'8" x 20'5"  
Area: 381 sq. ft  
Counted as living area: Yes

Heated: Yes  
Finished: Yes  
Enclosed: Yes  
Contiguous: Yes  
Permitted: Yes  
Wet space: No  
Addition: No  
Conversion: No

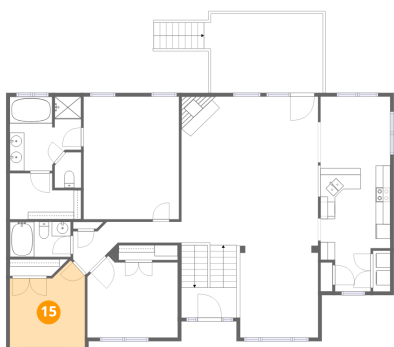
## 14 Floor 2 - W.I.C.



Dimensions: 9'10" x 6'4"  
Area: 62 sq. ft  
Counted as living area: Yes

Heated: Yes  
Finished: Yes  
Enclosed: Yes  
Contiguous: Yes  
Permitted: Yes  
Wet space: No  
Addition: No  
Conversion: No

### 15 Floor 2 - Bedroom



Dimensions: 10'4" x 11'11"  
Area: 123 sq. ft  
Counted as living area: Yes

Heated: Yes  
Finished: Yes  
Enclosed: Yes  
Contiguous: Yes  
Permitted: Yes  
Wet space: No  
Addition: No  
Conversion: No

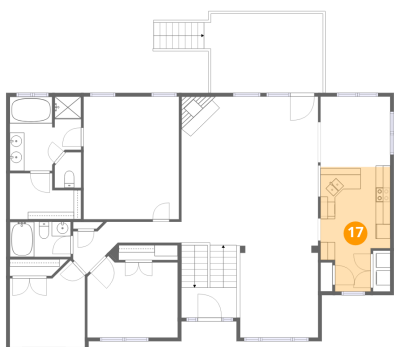
### 16 Floor 2 - Hall



Dimensions: 14'10" x 2'10"  
Area: 42 sq. ft  
Counted as living area: Yes

Heated: Yes  
Finished: Yes  
Enclosed: Yes  
Contiguous: Yes  
Permitted: Yes  
Wet space: No  
Addition: No  
Conversion: No

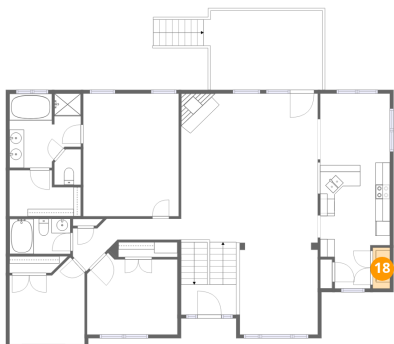
### 17 Floor 2 - Kitchen



Dimensions: 9'7" x 17'1"  
Area: 163 sq. ft  
Counted as living area: Yes

Heated: Yes  
Finished: Yes  
Enclosed: Yes  
Contiguous: Yes  
Permitted: Yes  
Wet space: No  
Addition: No  
Conversion: No

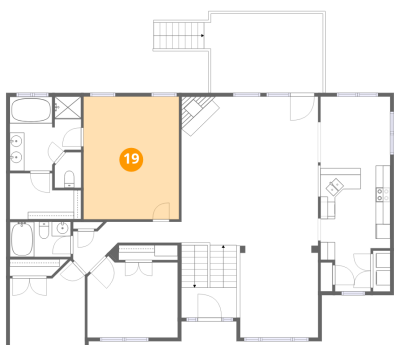
### 18 Floor 2 - Laundry



Dimensions: 2'4" x 5'7"  
Area: 13 sq. ft  
Counted as living area: Yes

Heated: Yes  
Finished: Yes  
Enclosed: Yes  
Contiguous: Yes  
Permitted: Yes  
Wet space: No  
Addition: No  
Conversion: No

### 19 Floor 2 - Primary Bedroom



Dimensions: 13'1" x 16'10"  
Area: 221 sq. ft  
Counted as living area: Yes

Heated: Yes  
Finished: Yes  
Enclosed: Yes  
Contiguous: Yes  
Permitted: Yes  
Wet space: No  
Addition: No  
Conversion: No

### 20 Floor 2 - Bath



Dimensions: 3'8" x 4'11"  
Area: 18 sq. ft  
Counted as living area: Yes

Heated: Yes  
Finished: Yes  
Enclosed: Yes  
Contiguous: Yes  
Permitted: Yes  
Wet space: Yes  
Addition: No  
Conversion: No

## 21 Floor 2 - Bedroom



Dimensions: 12'5" x 11'2"  
Area: 139 sq. ft  
Counted as living area: Yes

Heated: Yes  
Finished: Yes  
Enclosed: Yes  
Contiguous: Yes  
Permitted: Yes  
Wet space: No  
Addition: No  
Conversion: No

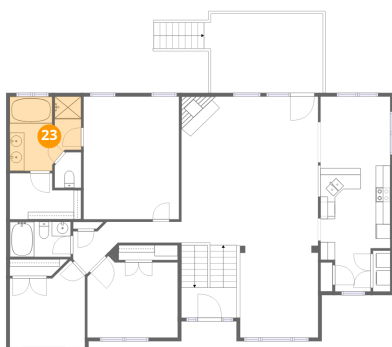
## 22 Floor 2 - Deck



Dimensions: 16'4" x 10'10"  
Area: 177 sq. ft  
Counted as living area: No

Heated: No  
Finished: No  
Enclosed: No  
Contiguous: Yes  
Permitted: Yes  
Wet space: No  
Addition: No  
Conversion: No

## 23 Floor 2 - Primary Bath

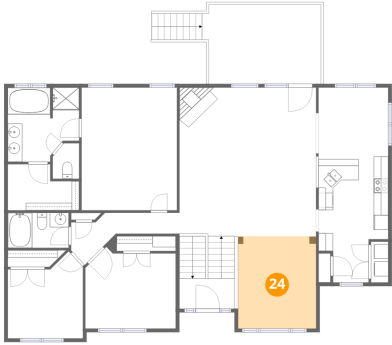


Dimensions: 9'9" x 10'2"  
Area: 100 sq. ft  
Counted as living area: Yes

Heated: Yes  
Finished: Yes  
Enclosed: Yes  
Contiguous: Yes  
Permitted: Yes  
Wet space: Yes  
Addition: No  
Conversion: No

**24** Floor 2 - Dining Area

---



**Dimensions:** 10'8" x 12'8"  
**Area:** 136 sq. ft  
**Counted as living area:** Yes

**Heated:** Yes  
**Finished:** Yes  
**Enclosed:** Yes  
**Contiguous:** Yes  
**Permitted:** Yes  
**Wet space:** No  
**Addition:** No  
**Conversion:** No