

# Home data report

## 4239 IN-44, Shelbyville, IN, US



**Total Area: 1207 sq. ft**

Basement: 0 sq. ft, 1st Floor: 1207 sq. ft

Excluded: Basement 462 sq. ft, Garage 319 sq. ft, Deck 225 sq. ft, Porch 14 sq. ft, Fireplace 2 sq. ft, Walls: 164 sq. ft

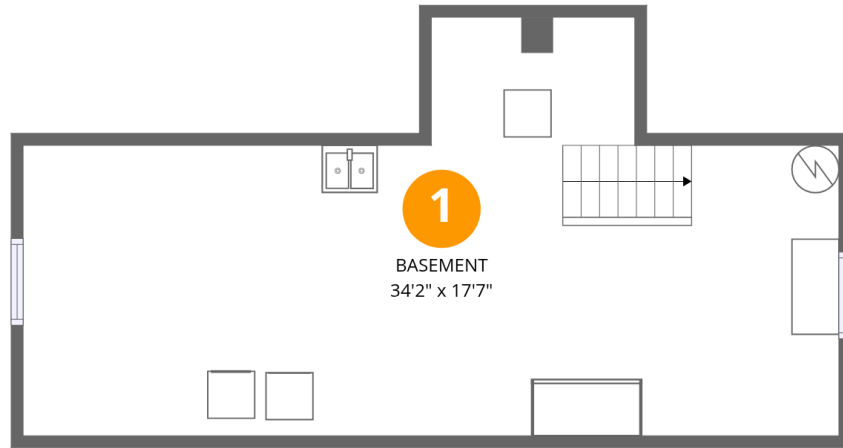
### Property summary

 **2** Floors

 **3** Bedrooms

 **1** Bathrooms

 **1** Garages



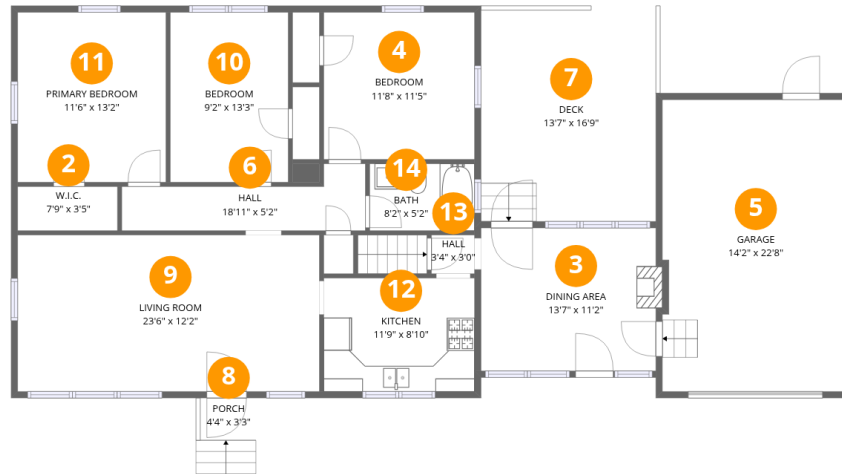
## Room dimensions

Floor 1 Below grade

Total:0sqft

Excluded: 462sqft

#		Dimensions	sqft	Counted as living area
1	Basement	34'2" x 17'7"	462 sq. ft	No



## Room dimensions

Floor 2

Total:1207sqft

Excluded: 560sqft

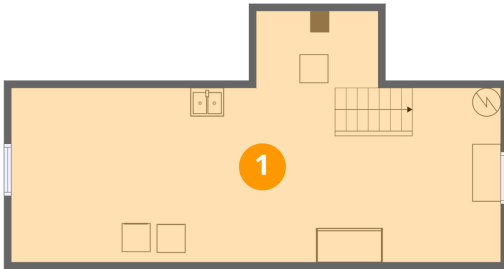
#		Dimensions	sqft	Counted as living area
2	W.I.C.	7'9" x 3'5"	27 sq. ft	Yes
3	Dining Area	13'7" x 11'2"	153 sq. ft	Yes
4	Bedroom	11'8" x 11'5"	134 sq. ft	Yes
5	Garage	14'2" x 22'8"	319 sq. ft	No
6	Hall	18'11" x 5'2"	71 sq. ft	Yes
7	Deck	13'7" x 16'9"	225 sq. ft	No
8	Porch	4'4" x 3'3"	14 sq. ft	No
9	Living Room	23'6" x 12'2"	286 sq. ft	Yes
10	Bedroom	9'2" x 13'3"	121 sq. ft	Yes
11	Primary Bedroom	11'6" x 13'2"	153 sq. ft	Yes
12	Kitchen	11'9" x 8'10"	104 sq. ft	Yes

Home data report

**4239 IN-44,Shelbyville,IN,US**

#		Dimensions	sqft	Counted as living area
13	Hall	3'4" x 3'0"	10 sq. ft	Yes
14	Bath	8'2" x 5'2"	42 sq. ft	Yes

## 1 Floor 1 - Basement



Dimensions: 34'2" x 17'7"  
Area: 462 sq. ft  
Counted as living area: No

Heated: Yes  
Finished: No  
Enclosed: Yes  
Contiguous: Yes  
Permitted: Yes  
Wet space: No  
Addition: No  
Conversion: No

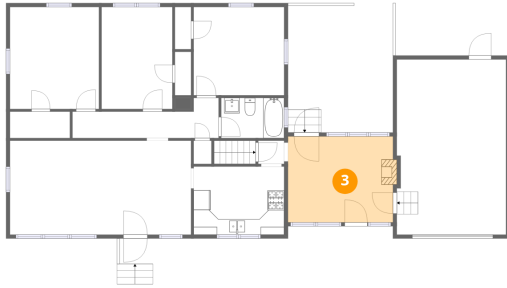
## 2 Floor 2 - W.I.C.



Dimensions: 7'9" x 3'5"  
Area: 27 sq. ft  
Counted as living area: Yes

Heated: Yes  
Finished: Yes  
Enclosed: Yes  
Contiguous: Yes  
Permitted: Yes  
Wet space: No  
Addition: No  
Conversion: No

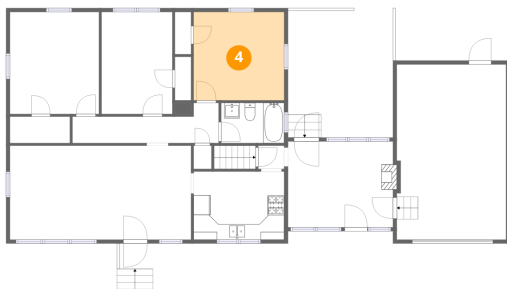
### 3 Floor 2 - Dining Area



Dimensions: 13'7" x 11'2"  
Area: 153 sq. ft  
Counted as living area: Yes

Heated: Yes  
Finished: Yes  
Enclosed: Yes  
Contiguous: Yes  
Permitted: Yes  
Wet space: No  
Addition: No  
Conversion: No

### 4 Floor 2 - Bedroom



Dimensions: 11'8" x 11'5"  
Area: 134 sq. ft  
Counted as living area: Yes

Heated: Yes  
Finished: Yes  
Enclosed: Yes  
Contiguous: Yes  
Permitted: Yes  
Wet space: No  
Addition: No  
Conversion: No

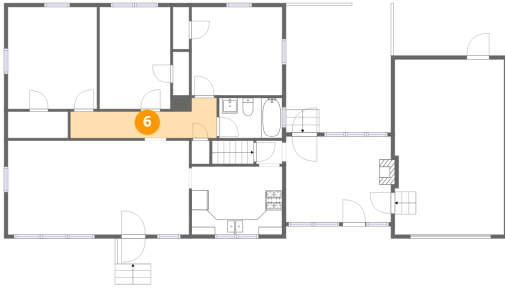
### 5 Floor 2 - Garage



Dimensions: 14'2" x 22'8"  
Area: 319 sq. ft  
Counted as living area: No

Heated: No  
Finished: No  
Enclosed: Yes  
Contiguous: Yes  
Permitted: Yes  
Wet space: No  
Addition: No  
Conversion: No

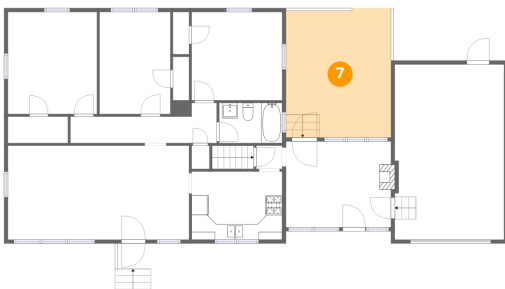
## 6 Floor 2 - Hall



Dimensions: 18'11" x 5'2"  
Area: 71 sq. ft  
Counted as living area: Yes

Heated: Yes  
Finished: Yes  
Enclosed: Yes  
Contiguous: Yes  
Permitted: Yes  
Wet space: No  
Addition: No  
Conversion: No

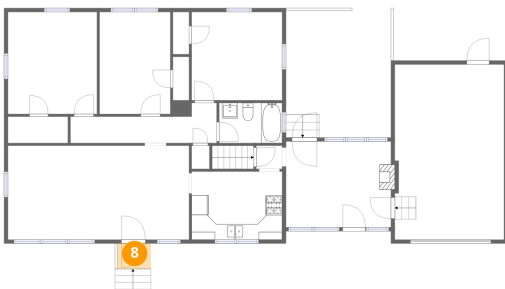
## 7 Floor 2 - Deck



Dimensions: 13'7" x 16'9"  
Area: 225 sq. ft  
Counted as living area: No

Heated: No  
Finished: No  
Enclosed: No  
Contiguous: Yes  
Permitted: Yes  
Wet space: No  
Addition: No  
Conversion: No

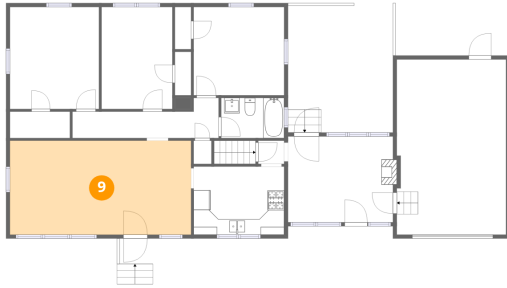
## 8 Floor 2 - Porch



Dimensions: 4'4" x 3'3"  
Area: 14 sq. ft  
Counted as living area: No

Heated: No  
Finished: No  
Enclosed: No  
Contiguous: Yes  
Permitted: Yes  
Wet space: No  
Addition: No  
Conversion: No

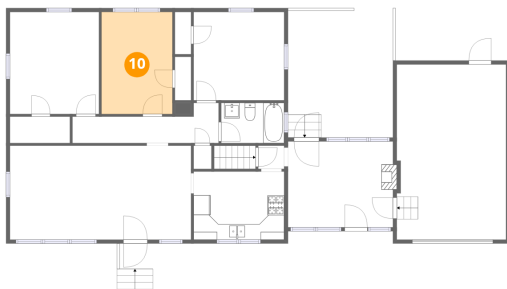
## 9 Floor 2 - Living Room



Dimensions: 23'6" x 12'2"  
Area: 286 sq. ft  
Counted as living area: Yes

Heated: Yes  
Finished: Yes  
Enclosed: Yes  
Contiguous: Yes  
Permitted: Yes  
Wet space: No  
Addition: No  
Conversion: No

## 10 Floor 2 - Bedroom



Dimensions: 9'2" x 13'3"  
Area: 121 sq. ft  
Counted as living area: Yes

Heated: Yes  
Finished: Yes  
Enclosed: Yes  
Contiguous: Yes  
Permitted: Yes  
Wet space: No  
Addition: No  
Conversion: No

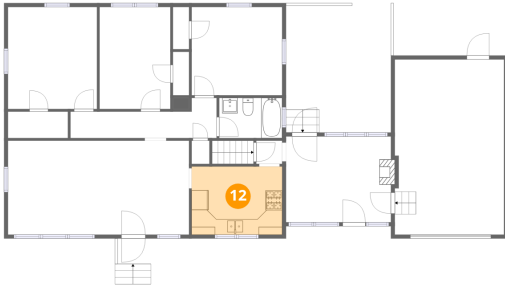
## 11 Floor 2 - Primary Bedroom



Dimensions: 11'6" x 13'2"  
Area: 153 sq. ft  
Counted as living area: Yes

Heated: Yes  
Finished: Yes  
Enclosed: Yes  
Contiguous: Yes  
Permitted: Yes  
Wet space: No  
Addition: No  
Conversion: No

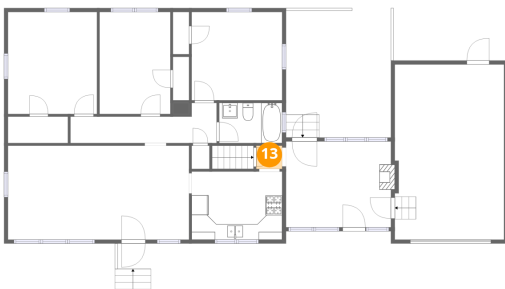
## 12 Floor 2 - Kitchen



Dimensions: 11'9" x 8'10"  
Area: 104 sq. ft  
Counted as living area: Yes

Heated: Yes  
Finished: Yes  
Enclosed: Yes  
Contiguous: Yes  
Permitted: Yes  
Wet space: No  
Addition: No  
Conversion: No

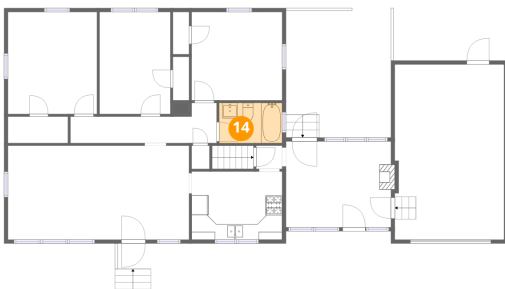
## 13 Floor 2 - Hall



Dimensions: 3'4" x 3'0"  
Area: 10 sq. ft  
Counted as living area: Yes

Heated: Yes  
Finished: Yes  
Enclosed: Yes  
Contiguous: Yes  
Permitted: Yes  
Wet space: No  
Addition: No  
Conversion: No

## 14 Floor 2 - Bath



Dimensions: 8'2" x 5'2"  
Area: 42 sq. ft  
Counted as living area: Yes

Heated: Yes  
Finished: Yes  
Enclosed: Yes  
Contiguous: Yes  
Permitted: Yes  
Wet space: Yes  
Addition: No  
Conversion: No