

Home data report

2617 Beagle Path Way, Laurel Oak Country Woods, Palm Harbor,
Pinellas County, Florida, United States, 34683



Total Area: 3236 sq. ft

1st Floor: 3236 sq. ft

Excluded: Garage 644 sq. ft, Patio 896 sq. ft, Covered patio 302 sq. ft, Walls: 236 sq. ft

Property summary

1 Floors

4 Bedrooms

3 Bathrooms

2 Garages

Home data report

2617 Beagle Path Way, Laurel Oak Country Woods, Palm Harbor,
Pinellas County, Florida, United States, 34683



Room dimensions

Floor 1

Total:3236sqft

Excluded: 1842sqft

#		Dimensions	sqft	Counted as living area
1	Patio	34'2" x 8'4"	285 sq. ft	No
2	Primary Bath	13'8" x 16'2"	153 sq. ft	Yes
3	Bedroom	10'9" x 11'5"	117 sq. ft	Yes
4	Laundry	13'4" x 6'8"	81 sq. ft	Yes
5	Covered Patio	27'4" x 11'1"	302 sq. ft	No
6	W.I.C.	6'6" x 7'6"	48 sq. ft	Yes
7	Hall	9'4" x 12'2"	66 sq. ft	Yes
8	Swimming Pool	27'8" x 13'2"	359 sq. ft	No
9	Bath	5'10" x 4'0"	22 sq. ft	Yes
10	Bedroom	11'7" x 15'7"	177 sq. ft	Yes
11	Family Room	27'11" x 17'8"	477 sq. ft	Yes

Home data report

**2617 Beagle Path Way, Laurel Oak Country Woods, Palm Harbor,
Pinellas County, Florida, United States, 34683**

#		Dimensions	sqft	Counted as living area
12	Kitchen	11'1" x 22'3"	220 sq. ft	Yes
13	Foyer	16'8" x 7'11"	120 sq. ft	Yes
14	Breakfast Nook	12'0" x 14'3"	150 sq. ft	Yes
15	Bath	10'0" x 15'7"	120 sq. ft	Yes
16	Garage	19'4" x 19'8"	370 sq. ft	No
17	Patio	41'4" x 32'3"	970 sq. ft	No
18	Bedroom	11'10" x 12'8"	149 sq. ft	Yes
19	Dining Area	13'4" x 11'6"	154 sq. ft	Yes
20	W.I.C.	13'3" x 12'8"	119 sq. ft	Yes
21	Primary Bedroom	17'1" x 15'7"	250 sq. ft	Yes
22	Sitting Room	17'2" x 11'10"	146 sq. ft	Yes
23	Utility	6'0" x 4'5"	26 sq. ft	Yes
24	Bath	8'6" x 11'10"	85 sq. ft	Yes
25	Garage	11'11" x 23'0"	274 sq. ft	No
26	Living Room	20'4" x 17'8"	366 sq. ft	Yes

2617 Beagle Path Way, Laurel Oak Country Woods, Palm Harbor,
Pinellas County, Florida, United States, 34683

1 Floor 1 - Patio



Dimensions: 34'2" x 8'4"
Area: 285 sq. ft
Counted as living area: No

Heated: No
Finished: No
Enclosed: No
Contiguous: Yes
Permitted: Yes
Wet space: No
Addition: No
Conversion: No

2 Floor 1 - Primary Bath



Dimensions: 13'8" x 16'2"
Area: 153 sq. ft
Counted as living area: Yes

Heated: Yes
Finished: Yes
Enclosed: Yes
Contiguous: Yes
Permitted: Yes
Wet space: Yes
Addition: No
Conversion: No

2617 Beagle Path Way, Laurel Oak Country Woods, Palm Harbor,
Pinellas County, Florida, United States, 34683

3 Floor 1 - Bedroom



Dimensions: 10'9" x 11'5"
Area: 117 sq. ft
Counted as living area: Yes

Heated: Yes
Finished: Yes
Enclosed: Yes
Contiguous: Yes
Permitted: Yes
Wet space: No
Addition: No
Conversion: No

4 Floor 1 - Laundry



Dimensions: 13'4" x 6'8"
Area: 81 sq. ft
Counted as living area: Yes

Heated: Yes
Finished: Yes
Enclosed: Yes
Contiguous: Yes
Permitted: Yes
Wet space: No
Addition: No
Conversion: No

5 Floor 1 - Covered Patio



Dimensions: 27'4" x 11'1"
Area: 302 sq. ft
Counted as living area: No

Heated: No
Finished: No
Enclosed: No
Contiguous: Yes
Permitted: Yes
Wet space: No
Addition: No
Conversion: No

6 Floor 1 - W.I.C.



Dimensions: 6'6" x 7'6"
Area: 48 sq. ft
Counted as living area: Yes

Heated: Yes
Finished: Yes
Enclosed: Yes
Contiguous: Yes
Permitted: Yes
Wet space: No
Addition: No
Conversion: No

7 Floor 1 - Hall



Dimensions: 9'4" x 12'2"
Area: 66 sq. ft
Counted as living area: Yes

Heated: Yes
Finished: Yes
Enclosed: Yes
Contiguous: Yes
Permitted: Yes
Wet space: No
Addition: No
Conversion: No

8 Floor 1 - Swimming Pool



Dimensions: 27'8" x 13'2"
Area: 359 sq. ft
Counted as living area: No

Heated: No
Finished: No
Enclosed: No
Contiguous: Yes
Permitted: No
Wet space: No
Addition: No
Conversion: No

2617 Beagle Path Way, Laurel Oak Country Woods, Palm Harbor,
Pinellas County, Florida, United States, 34683

9 Floor 1 - Bath



Dimensions: 5'10" x 4'0"
Area: 22 sq. ft
Counted as living area: Yes

Heated: Yes
Finished: Yes
Enclosed: Yes
Contiguous: Yes
Permitted: Yes
Wet space: Yes
Addition: No
Conversion: No

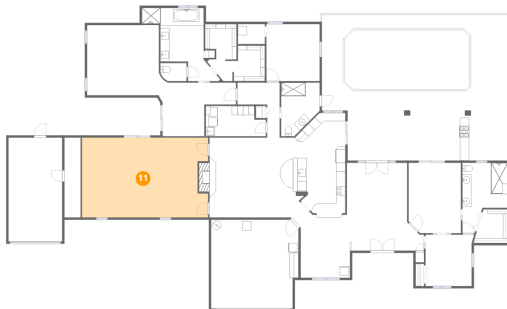
10 Floor 1 - Bedroom



Dimensions: 11'7" x 15'7"
Area: 177 sq. ft
Counted as living area: Yes

Heated: Yes
Finished: Yes
Enclosed: Yes
Contiguous: Yes
Permitted: Yes
Wet space: No
Addition: No
Conversion: No

11 Floor 1 - Family Room



Dimensions: 27'11" x 17'8"
Area: 477 sq. ft
Counted as living area: Yes

Heated: Yes
Finished: Yes
Enclosed: Yes
Contiguous: Yes
Permitted: Yes
Wet space: No
Addition: No
Conversion: No

2617 Beagle Path Way, Laurel Oak Country Woods, Palm Harbor,
Pinellas County, Florida, United States, 34683

12 Floor 1 - Kitchen



Dimensions: 11'1" x 22'3"
Area: 220 sq. ft
Counted as living area: Yes

Heated: Yes
Finished: Yes
Enclosed: Yes
Contiguous: Yes
Permitted: Yes
Wet space: No
Addition: No
Conversion: No

13 Floor 1 - Foyer



Dimensions: 16'8" x 7'11"
Area: 120 sq. ft
Counted as living area: Yes

Heated: Yes
Finished: Yes
Enclosed: Yes
Contiguous: Yes
Permitted: Yes
Wet space: No
Addition: No
Conversion: No

14 Floor 1 - Breakfast Nook



Dimensions: 12'0" x 14'3"
Area: 150 sq. ft
Counted as living area: Yes

Heated: Yes
Finished: Yes
Enclosed: Yes
Contiguous: Yes
Permitted: Yes
Wet space: No
Addition: No
Conversion: No

15 Floor 1 - Bath



Dimensions: 10'0" x 15'7"
Area: 120 sq. ft
Counted as living area: Yes

Heated: Yes
Finished: Yes
Enclosed: Yes
Contiguous: Yes
Permitted: Yes
Wet space: Yes
Addition: No
Conversion: No

16 Floor 1 - Garage



Dimensions: 19'4" x 19'8"
Area: 370 sq. ft
Counted as living area: No

Heated: No
Finished: No
Enclosed: Yes
Contiguous: Yes
Permitted: Yes
Wet space: No
Addition: No
Conversion: No

17 Floor 1 - Patio



Dimensions: 41'4" x 32'3"
Area: 970 sq. ft
Counted as living area: No

Heated: No
Finished: No
Enclosed: No
Contiguous: Yes
Permitted: Yes
Wet space: No
Addition: No
Conversion: No

2617 Beagle Path Way, Laurel Oak Country Woods, Palm Harbor,
Pinellas County, Florida, United States, 34683

18 Floor 1 - Bedroom



Dimensions: 11'10" x 12'8"
Area: 149 sq. ft
Counted as living area: Yes

Heated: Yes
Finished: Yes
Enclosed: Yes
Contiguous: Yes
Permitted: Yes
Wet space: No
Addition: No
Conversion: No

19 Floor 1 - Dining Area



Dimensions: 13'4" x 11'6"
Area: 154 sq. ft
Counted as living area: Yes

Heated: Yes
Finished: Yes
Enclosed: Yes
Contiguous: Yes
Permitted: Yes
Wet space: No
Addition: No
Conversion: No

20 Floor 1 - W.I.C.



Dimensions: 13'3" x 12'8"
Area: 119 sq. ft
Counted as living area: Yes

Heated: Yes
Finished: Yes
Enclosed: Yes
Contiguous: Yes
Permitted: Yes
Wet space: No
Addition: No
Conversion: No

2617 Beagle Path Way, Laurel Oak Country Woods, Palm Harbor,
Pinellas County, Florida, United States, 34683

21 Floor 1 - Primary Bedroom



Dimensions: 17'1" x 15'7"
Area: 250 sq. ft
Counted as living area: Yes

Heated: Yes
Finished: Yes
Enclosed: Yes
Contiguous: Yes
Permitted: Yes
Wet space: No
Addition: No
Conversion: No

22 Floor 1 - Sitting Room



Dimensions: 17'2" x 11'10"
Area: 146 sq. ft
Counted as living area: Yes

Heated: Yes
Finished: Yes
Enclosed: Yes
Contiguous: Yes
Permitted: Yes
Wet space: No
Addition: No
Conversion: No

23 Floor 1 - Utility



Dimensions: 6'0" x 4'5"
Area: 26 sq. ft
Counted as living area: Yes

Heated: Yes
Finished: Yes
Enclosed: Yes
Contiguous: Yes
Permitted: Yes
Wet space: No
Addition: No
Conversion: No

2617 Beagle Path Way, Laurel Oak Country Woods, Palm Harbor,
Pinellas County, Florida, United States, 34683

24 Floor 1 - Bath



Dimensions: 8'6" x 11'10"
Area: 85 sq. ft
Counted as living area: Yes

Heated: Yes
Finished: Yes
Enclosed: Yes
Contiguous: Yes
Permitted: Yes
Wet space: Yes
Addition: No
Conversion: No

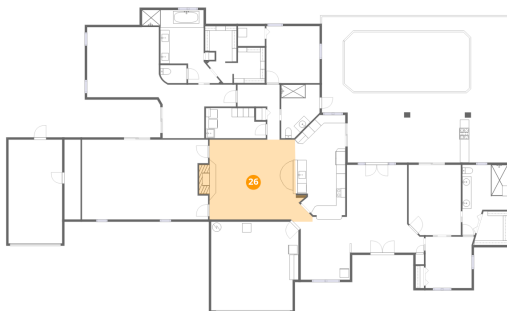
25 Floor 1 - Garage



Dimensions: 11'11" x 23'0"
Area: 274 sq. ft
Counted as living area: No

Heated: No
Finished: No
Enclosed: Yes
Contiguous: Yes
Permitted: Yes
Wet space: No
Addition: No
Conversion: No

26 Floor 1 - Living Room



Dimensions: 20'4" x 17'8"
Area: 366 sq. ft
Counted as living area: Yes

Heated: Yes
Finished: Yes
Enclosed: Yes
Contiguous: Yes
Permitted: Yes
Wet space: No
Addition: No
Conversion: No