

Home data report

1 Hickory Road, Roseland, Essex County, New Jersey, United States, 07068



Total Area: 2602 sq. ft

1st Floor: 2602 sq. ft

Excluded: Garage 478 sq. ft, Utility 35 sq. ft, Patio 1328 sq. ft, Porch 186 sq. ft, Walls: 166 sq. ft

Property summary

 **1** Floors

 **3** Bedrooms

 **2** Bathrooms

Home data report

1 Hickory Road, Roseland, Essex County, New Jersey, United States, 07068

 **1**
Half baths

 **1**
Garages

1 Hickory Road, Roseland, Essex County, New Jersey, United States, 07068



Room dimensions

Floor 1

Total:2602sqft

Excluded: 2027sqft

#		Dimensions	sqft	Counted as living area
1	Family Room	13'11" x 17'3"	235 sq. ft	Yes
2	Foyer	16'3" x 19'3"	231 sq. ft	Yes
3	Garage	23'8" x 20'5"	478 sq. ft	No
4	Porch	19'0" x 10'10"	186 sq. ft	No
5	Bath	9'8" x 5'3"	51 sq. ft	Yes
6	Bedroom	13'2" x 9'10"	130 sq. ft	Yes
7	W.I.C.	7'11" x 3'2"	25 sq. ft	Yes
8	Utility	4'9" x 8'6"	35 sq. ft	No
9	Patio	13'1" x 38'3"	503 sq. ft	No
10	Bath	7'1" x 2'6"	18 sq. ft	Yes
11	Dining Area	23'7" x 14'1"	303 sq. ft	Yes

Home data report

1 Hickory Road, Roseland, Essex County, New Jersey, United States, 07068

#		Dimensions	sqft	Counted as living area
12	Eat-in Kitchen	24'1" x 17'10"	407 sq. ft	Yes
13	Bedroom	13'3" x 13'10"	184 sq. ft	Yes
14	Hall	16'3" x 3'8"	59 sq. ft	Yes
15	W.I.C.	7'11" x 6'0"	47 sq. ft	Yes
16	Primary Bedroom	19'6" x 19'9"	286 sq. ft	Yes
17	Patio	66'8" x 18'9"	825 sq. ft	No
18	Bath	7'3" x 12'1"	87 sq. ft	Yes
19	Living Room	23'5" x 15'11"	401 sq. ft	Yes

1 Hickory Road, Roseland, Essex County, New Jersey, United States, 07068

1 Floor 1 - Family Room



Dimensions: 13'11" x 17'3"
Area: 235 sq. ft
Counted as living area: Yes

Heated: Yes
Finished: Yes
Enclosed: Yes
Contiguous: Yes
Permitted: Yes
Wet space: No
Addition: No
Conversion: No

2 Floor 1 - Foyer



Dimensions: 16'3" x 19'3"
Area: 231 sq. ft
Counted as living area: Yes

Heated: Yes
Finished: Yes
Enclosed: Yes
Contiguous: Yes
Permitted: Yes
Wet space: No
Addition: No
Conversion: No

1 Hickory Road, Roseland, Essex County, New Jersey, United States, 07068

3 Floor 1 - Garage



Dimensions: 23'8" x 20'5"
Area: 478 sq. ft
Counted as living area: No

Heated: No
Finished: No
Enclosed: Yes
Contiguous: Yes
Permitted: Yes
Wet space: No
Addition: No
Conversion: No

4 Floor 1 - Porch



Dimensions: 19'0" x 10'10"
Area: 186 sq. ft
Counted as living area: No

Heated: No
Finished: No
Enclosed: No
Contiguous: Yes
Permitted: Yes
Wet space: No
Addition: No
Conversion: No

5 Floor 1 - Bath

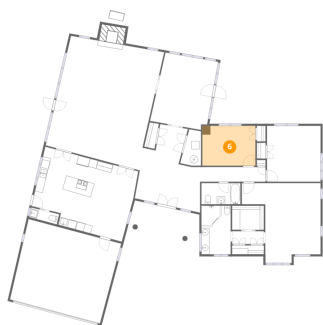


Dimensions: 9'8" x 5'3"
Area: 51 sq. ft
Counted as living area: Yes

Heated: Yes
Finished: Yes
Enclosed: Yes
Contiguous: Yes
Permitted: Yes
Wet space: Yes
Addition: No
Conversion: No

1 Hickory Road, Roseland, Essex County, New Jersey, United States, 07068

6 Floor 1 - Bedroom



Dimensions: 13'2" x 9'10"
Area: 130 sq. ft
Counted as living area: Yes

Heated: Yes
Finished: Yes
Enclosed: Yes
Contiguous: Yes
Permitted: Yes
Wet space: No
Addition: No
Conversion: No

7 Floor 1 - W.I.C.



Dimensions: 7'11" x 3'2"
Area: 25 sq. ft
Counted as living area: Yes

Heated: Yes
Finished: Yes
Enclosed: Yes
Contiguous: Yes
Permitted: Yes
Wet space: No
Addition: No
Conversion: No

8 Floor 1 - Utility

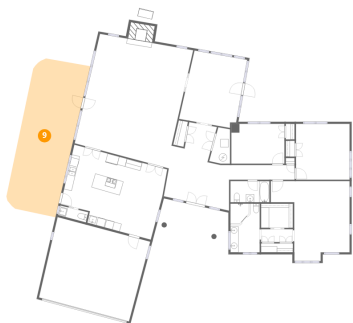


Dimensions: 4'9" x 8'6"
Area: 35 sq. ft
Counted as living area: No

Heated: Yes
Finished: No
Enclosed: Yes
Contiguous: Yes
Permitted: Yes
Wet space: No
Addition: No
Conversion: No

1 Hickory Road, Roseland, Essex County, New Jersey, United States, 07068

9 Floor 1 - Patio



Dimensions: 13'1" x 38'3"
Area: 503 sq. ft
Counted as living area: No

Heated: No
Finished: No
Enclosed: No
Contiguous: Yes
Permitted: Yes
Wet space: No
Addition: No
Conversion: No

10 Floor 1 - Bath



Dimensions: 7'1" x 2'6"
Area: 18 sq. ft
Counted as living area: Yes

Heated: Yes
Finished: Yes
Enclosed: Yes
Contiguous: Yes
Permitted: Yes
Wet space: Yes
Addition: No
Conversion: No

11 Floor 1 - Dining Area



Dimensions: 23'7" x 14'1"
Area: 303 sq. ft
Counted as living area: Yes

Heated: Yes
Finished: Yes
Enclosed: Yes
Contiguous: Yes
Permitted: Yes
Wet space: No
Addition: No
Conversion: No

1 Hickory Road, Roseland, Essex County, New Jersey, United States, 07068

12 Floor 1 - Eat-in Kitchen



Dimensions: 24'1" x 17'10"
Area: 407 sq. ft
Counted as living area: Yes

Heated: Yes
Finished: Yes
Enclosed: Yes
Contiguous: Yes
Permitted: Yes
Wet space: No
Addition: No
Conversion: No

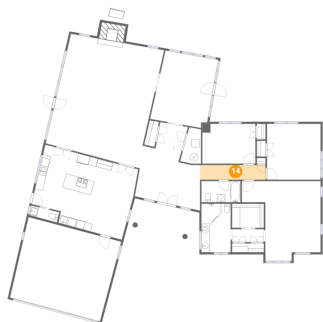
13 Floor 1 - Bedroom



Dimensions: 13'3" x 13'10"
Area: 184 sq. ft
Counted as living area: Yes

Heated: Yes
Finished: Yes
Enclosed: Yes
Contiguous: Yes
Permitted: Yes
Wet space: No
Addition: No
Conversion: No

14 Floor 1 - Hall



Dimensions: 16'3" x 3'8"
Area: 59 sq. ft
Counted as living area: Yes

Heated: Yes
Finished: Yes
Enclosed: Yes
Contiguous: Yes
Permitted: Yes
Wet space: No
Addition: No
Conversion: No

1 Hickory Road, Roseland, Essex County, New Jersey, United States, 07068

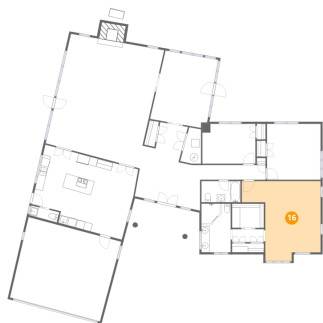
15 Floor 1 - W.I.C.



Dimensions: 7'11" x 6'0"
Area: 47 sq. ft
Counted as living area: Yes

Heated: Yes
Finished: Yes
Enclosed: Yes
Contiguous: Yes
Permitted: Yes
Wet space: No
Addition: No
Conversion: No

16 Floor 1 - Primary Bedroom



Dimensions: 19'6" x 19'9"
Area: 286 sq. ft
Counted as living area: Yes

Heated: Yes
Finished: Yes
Enclosed: Yes
Contiguous: Yes
Permitted: Yes
Wet space: No
Addition: No
Conversion: No

17 Floor 1 - Patio



Dimensions: 66'8" x 18'9"
Area: 825 sq. ft
Counted as living area: No

Heated: No
Finished: No
Enclosed: No
Contiguous: Yes
Permitted: Yes
Wet space: No
Addition: No
Conversion: No

1 Hickory Road, Roseland, Essex County, New Jersey, United States, 07068

18 Floor 1 - Bath



Dimensions: 7'3" x 12'1"
Area: 87 sq. ft
Counted as living area: Yes

Heated: Yes
Finished: Yes
Enclosed: Yes
Contiguous: Yes
Permitted: Yes
Wet space: Yes
Addition: No
Conversion: No

19 Floor 1 - Living Room



Dimensions: 23'5" x 15'11"
Area: 401 sq. ft
Counted as living area: Yes

Heated: Yes
Finished: Yes
Enclosed: Yes
Contiguous: Yes
Permitted: Yes
Wet space: No
Addition: No
Conversion: No