

Home data report

421 Kickapoo Avenue, Batavia, Kane County, Illinois, United States, 60510



Total Area: 1742 sq. ft

Basement: 642 sq. ft, 1st Floor: 466 sq. ft, 2nd Floor: 634 sq. ft

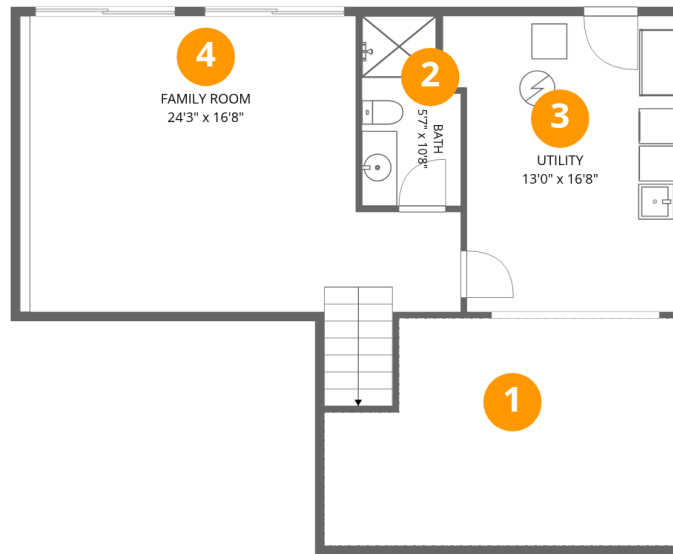
Excluded: Crawl space 230 sq. ft, Garage 406 sq. ft, Walls: 207 sq. ft

Property summary



Home data report

421 Kickapoo Avenue, Batavia, Kane County, Illinois, United States, 60510



Room dimensions

Floor 1 Below grade

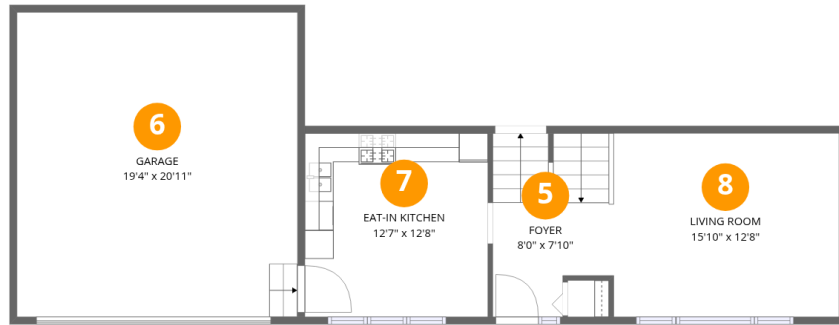
Total:642sqft

Excluded: 230sqft

#		Dimensions	sqft	Counted as living area
1	Crawl Space	19'8" x 12'10"	230 sq. ft	No
2	Bath	5'7" x 10'8"	54 sq. ft	Yes
3	Utility	13'0" x 16'8"	200 sq. ft	Yes
4	Family Room	24'3" x 16'8"	369 sq. ft	Yes

Home data report

421 Kickapoo Avenue, Batavia, Kane County, Illinois, United States, 60510



Room dimensions

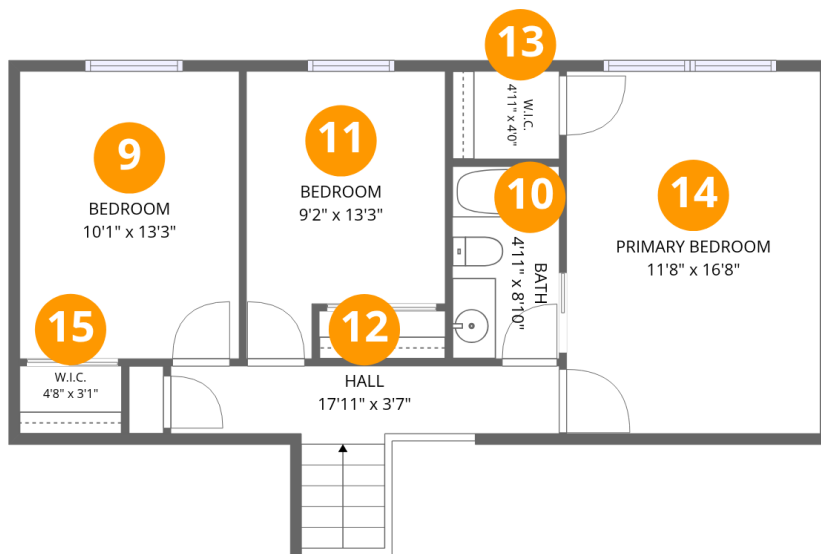
Floor 2

Total:466sqft

Excluded: 406sqft

#		Dimensions	sqft	Counted as living area
5	Foyer	8'0" x 7'10"	92 sq. ft	Yes
6	Garage	19'4" x 20'11"	406 sq. ft	No
7	Eat-in Kitchen	12'7" x 12'8"	160 sq. ft	Yes
8	Living Room	15'10" x 12'8"	200 sq. ft	Yes

421 Kickapoo Avenue, Batavia, Kane County, Illinois, United States, 60510



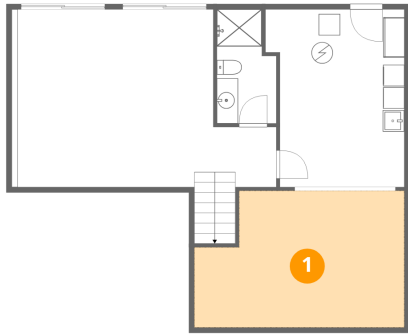
Room dimensions

Floor 3

Total:634sqft Excluded: 0sqft

#		Dimensions	sqft	Counted as living area
9	Bedroom	10'1" x 13'3"	133 sq. ft	Yes
10	Bath	4'11" x 8'10"	44 sq. ft	Yes
11	Bedroom	9'2" x 13'3"	105 sq. ft	Yes
12	Hall	17'11" x 3'7"	76 sq. ft	Yes
13	W.I.C.	4'11" x 4'0"	20 sq. ft	Yes
14	Primary Bedroom	11'8" x 16'8"	194 sq. ft	Yes
15	W.I.C.	4'8" x 3'1"	15 sq. ft	Yes

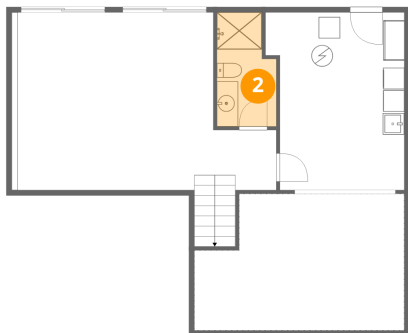
1 Floor 1 - Crawl Space



Dimensions: 19'8" x 12'10"
Area: 230 sq. ft
Counted as living area: No

Heated: No
Finished: No
Enclosed: No
Contiguous: No
Permitted: No
Wet space: No
Addition: No
Conversion: No

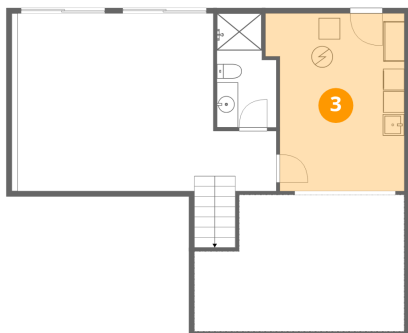
2 Floor 1 - Bath



Dimensions: 5'7" x 10'8"
Area: 54 sq. ft
Counted as living area: Yes

Heated: Yes
Finished: Yes
Enclosed: Yes
Contiguous: Yes
Permitted: Yes
Wet space: Yes
Addition: No
Conversion: No

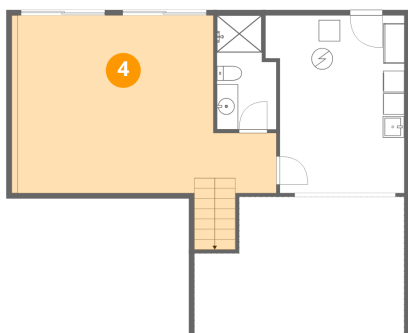
3 Floor 1 - Utility



Dimensions: 13'0" x 16'8"
Area: 200 sq. ft
Counted as living area: Yes

Heated: Yes
Finished: Yes
Enclosed: Yes
Contiguous: Yes
Permitted: Yes
Wet space: No
Addition: No
Conversion: No

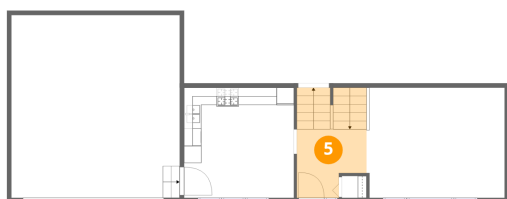
4 Floor 1 - Family Room



Dimensions: 24'3" x 16'8"
Area: 369 sq. ft
Counted as living area: Yes

Heated: Yes
Finished: Yes
Enclosed: Yes
Contiguous: Yes
Permitted: Yes
Wet space: No
Addition: No
Conversion: No

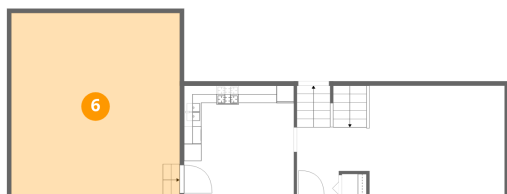
5 Floor 2 - Foyer



Dimensions: 8'0" x 7'10"
Area: 92 sq. ft
Counted as living area: Yes

Heated: Yes
Finished: Yes
Enclosed: Yes
Contiguous: Yes
Permitted: Yes
Wet space: No
Addition: No
Conversion: No

6 Floor 2 - Garage



Dimensions: 19'4" x 20'11"
Area: 406 sq. ft
Counted as living area: No

Heated: No
Finished: No
Enclosed: Yes
Contiguous: Yes
Permitted: Yes
Wet space: No
Addition: No
Conversion: No

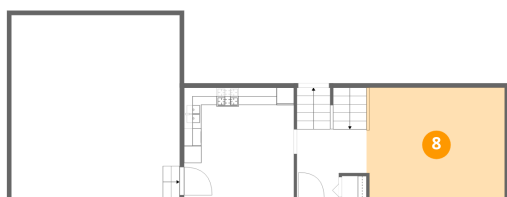
7 Floor 2 - Eat-in Kitchen



Dimensions: 12'7" x 12'8"
Area: 160 sq. ft
Counted as living area: Yes

Heated: Yes
Finished: Yes
Enclosed: Yes
Contiguous: Yes
Permitted: Yes
Wet space: No
Addition: No
Conversion: No

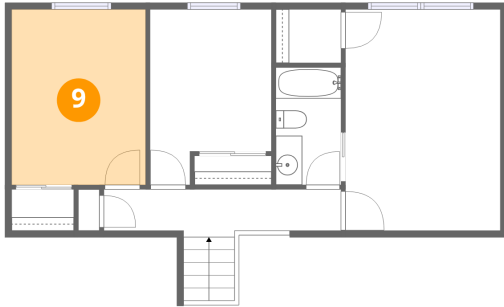
8 Floor 2 - Living Room



Dimensions: 15'10" x 12'8"
Area: 200 sq. ft
Counted as living area: Yes

Heated: Yes
Finished: Yes
Enclosed: Yes
Contiguous: Yes
Permitted: Yes
Wet space: No
Addition: No
Conversion: No

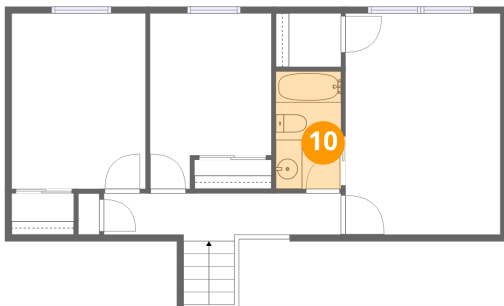
9 Floor 3 - Bedroom



Dimensions: 10'1" x 13'3"
Area: 133 sq. ft
Counted as living area: Yes

Heated: Yes
Finished: Yes
Enclosed: Yes
Contiguous: Yes
Permitted: Yes
Wet space: No
Addition: No
Conversion: No

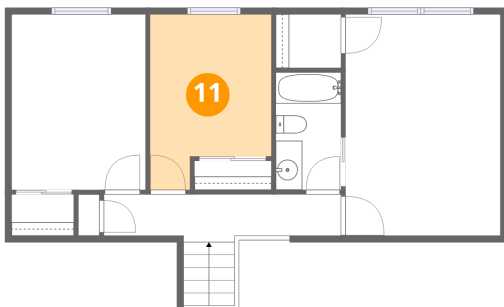
10 Floor 3 - Bath



Dimensions: 4'11" x 8'10"
Area: 44 sq. ft
Counted as living area: Yes

Heated: Yes
Finished: Yes
Enclosed: Yes
Contiguous: Yes
Permitted: Yes
Wet space: Yes
Addition: No
Conversion: No

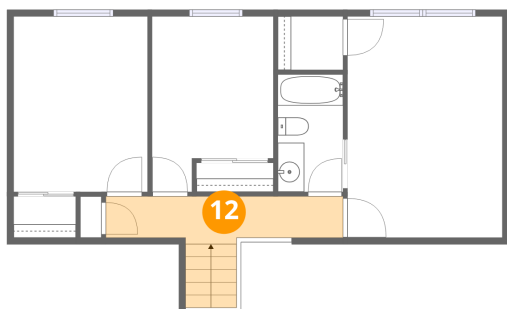
11 Floor 3 - Bedroom



Dimensions: 9'2" x 13'3"
Area: 105 sq. ft
Counted as living area: Yes

Heated: Yes
Finished: Yes
Enclosed: Yes
Contiguous: Yes
Permitted: Yes
Wet space: No
Addition: No
Conversion: No

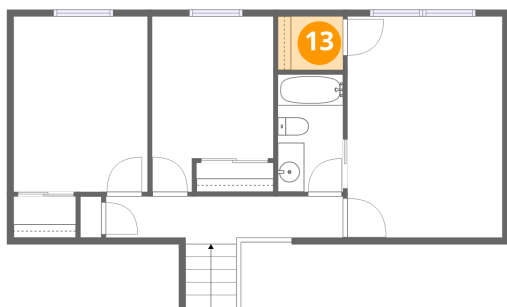
12 Floor 3 - Hall



Dimensions: 17'11" x 3'7"
Area: 76 sq. ft
Counted as living area: Yes

Heated: Yes
Finished: Yes
Enclosed: Yes
Contiguous: Yes
Permitted: Yes
Wet space: No
Addition: No
Conversion: No

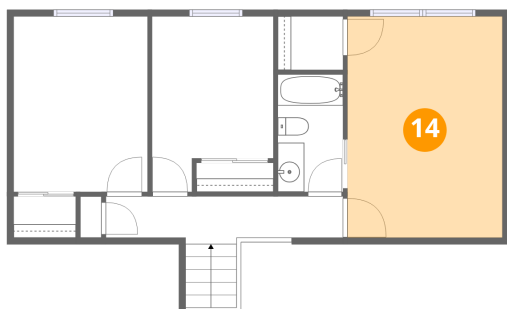
13 Floor 3 - W.I.C.



Dimensions: 4'11" x 4'0"
Area: 20 sq. ft
Counted as living area: Yes

Heated: Yes
Finished: Yes
Enclosed: Yes
Contiguous: Yes
Permitted: Yes
Wet space: No
Addition: No
Conversion: No

14 Floor 3 - Primary Bedroom

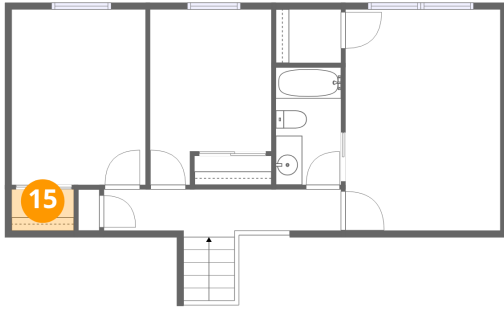


Dimensions: 11'8" x 16'8"
Area: 194 sq. ft
Counted as living area: Yes

Heated: Yes
Finished: Yes
Enclosed: Yes
Contiguous: Yes
Permitted: Yes
Wet space: No
Addition: No
Conversion: No

421 Kickapoo Avenue, Batavia, Kane County, Illinois, United States, 60510

15 Floor 3 - W.I.C.



Dimensions: 4'8" x 3'1"
Area: 15 sq. ft
Counted as living area: Yes

Heated: Yes
Finished: Yes
Enclosed: Yes
Contiguous: Yes
Permitted: Yes
Wet space: No
Addition: No
Conversion: No