

Home report

2431 Delaware Avenue Northwest, Melrose, Roanoke, Roanoke city, Virginia, United States, 24017



Total Area: 1972 sq. ft

Below Ground: 302 sq. ft, Floor 2: 835 sq. ft, Floor 3: 835 sq. ft, Floor 4: 0 sq. ft

Excluded: Utility 335 sq. ft, Porch 229 sq. ft, Patio 271 sq. ft, Low ceiling 460 sq. ft, Attic 374 sq. ft, Walls: 228 sq. ft

Property summary

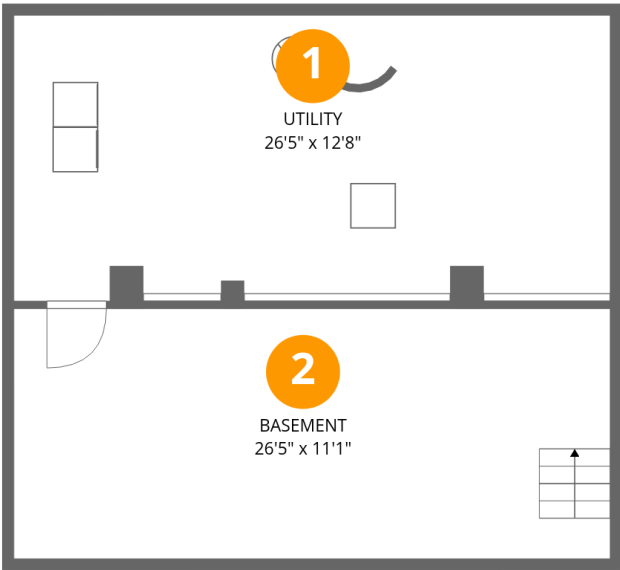
**4** Floors

**4** Bedrooms

**2** Bathrooms

Home report

2431 Delaware Avenue Northwest, Melrose, Roanoke, Roanoke city, Virginia, United States, 24017



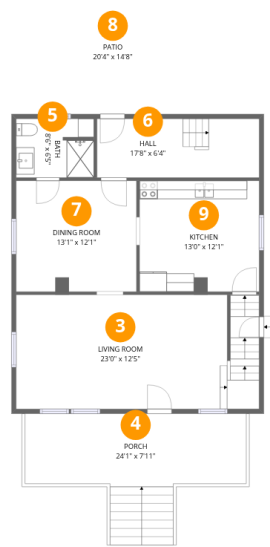
Room dimensions

Floor 1 Below ground Total:302sqft Excluded: 335sqft

#		Max Dimensions	sqft	Included
1	Utility	26'5" x 12'8"	335 sq. ft	No
2	Basement	26'5" x 11'1"	293 sq. ft	Yes

Home report

2431 Delaware Avenue Northwest, Melrose, Roanoke, Roanoke city, Virginia, United States, 24017



Room dimensions

Floor 2

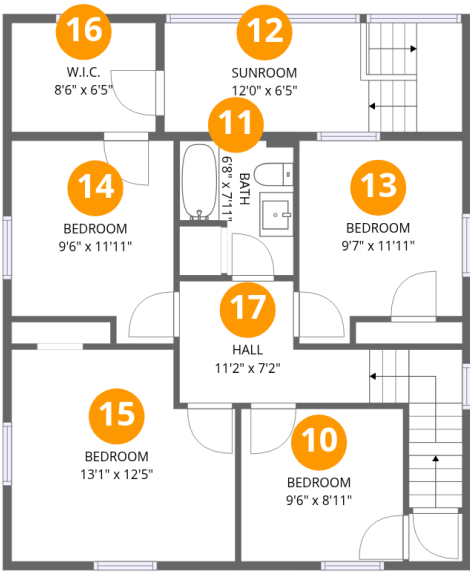
Total:835sqft

Excluded: 500sqft

#		Max Dimensions	sqft	Included
3	Living Room	23'0" x 12'5"	326 sq. ft	Yes
4	Porch	24'1" x 7'11"	229 sq. ft	No
5	Bath	8'6" x 6'5"	53 sq. ft	Yes
6	Hall	17'8" x 6'4"	113 sq. ft	Yes
7	Dining Room	13'1" x 12'1"	158 sq. ft	Yes
8	Patio	20'4" x 14'8"	271 sq. ft	No
9	Kitchen	13'0" x 12'1"	157 sq. ft	Yes

Home report

2431 Delaware Avenue Northwest, Melrose, Roanoke, Roanoke city, Virginia, United States, 24017



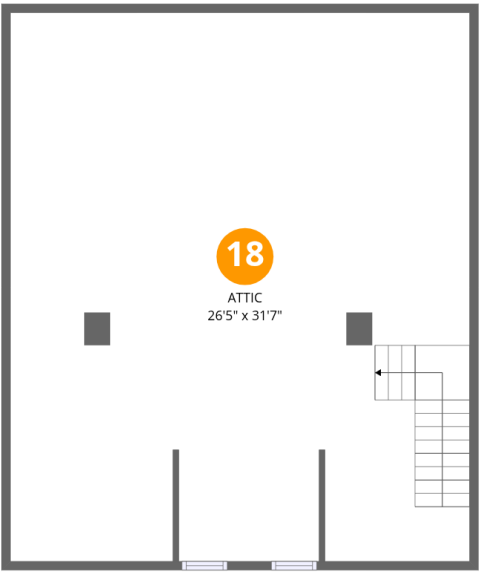
Room dimensions

Floor 3 Total:835sqft Excluded: 0sqft

#		Max Dimensions	sqft	Included
10	Bedroom	9'6" x 8'11"	85 sq. ft	Yes
11	Bath	6'8" x 7'11"	44 sq. ft	Yes
12	Sunroom	12'0" x 6'5"	112 sq. ft	Yes
13	Bedroom	9'7" x 11'11"	103 sq. ft	Yes
14	Bedroom	9'6" x 11'11"	103 sq. ft	Yes
15	Bedroom	13'1" x 12'5"	151 sq. ft	Yes
16	W.I.C.	8'6" x 6'5"	54 sq. ft	Yes
17	Hall	11'2" x 7'2"	98 sq. ft	Yes

Home report

2431 Delaware Avenue Northwest, Melrose, Roanoke, Roanoke city, Virginia, United States, 24017



Room dimensions

Floor 4 Total:0sqft Excluded: 834sqft

#		Max Dimensions	sqft	Included
18	Attic	26'5" x 31'7"	374 sq. ft	No

Heated: Yes
Finished: No
Enclosed: Yes
Contiguous:
Yes
Permitted: Yes
Wet space: No
Addition: No
Conversion: No

Heated: Yes
Finished: Yes
Enclosed: Yes
Contiguous:
No
Permitted: Yes
Wet space: No
Addition: No
Conversion:
No

3 Floor 2 - Living Room



Max Dimensions: 23'0" x 12'5"
Calculated Area: 326 sq. ft
Included: Yes

Heated: Yes
Finished: Yes
Enclosed: Yes
Contiguous: Yes
Permitted: Yes
Wet space: No
Addition: No
Conversion: No

4 Floor 2 - Porch



Max Dimensions: 24'1" x 7'11"
Calculated Area: 229 sq. ft
Included: No

Heated: No
Finished: No
Enclosed: No
Contiguous: Yes
Permitted: Yes
Wet space: No
Addition: No
Conversion: No

5 Floor 2 - Bath



Max Dimensions: 8'6" x 6'5"
Calculated Area: 53 sq. ft
Included: Yes

Heated: Yes
Finished: Yes
Enclosed: Yes
Contiguous: Yes
Permitted: Yes
Wet space: Yes
Addition: No
Conversion: No

6 Floor 2 - Hall



Max Dimensions: 17'8" x 6'4"
Calculated Area: 113 sq. ft
Included: Yes

Heated: Yes
Finished: Yes
Enclosed: Yes
Contiguous: Yes
Permitted: Yes
Wet space: No
Addition: No
Conversion: No

7 Floor 2 - Dining Room



Max Dimensions: 13'1" x 12'1"
Calculated Area: 158 sq. ft
Included: Yes

Heated: Yes
Finished: Yes
Enclosed: Yes
Contiguous: Yes
Permitted: Yes
Wet space: No
Addition: No
Conversion: No

8 Floor 2 - Patio



Max Dimensions: 20'4" x 14'8"
Calculated Area: 271 sq. ft
Included: No

Heated: No
Finished: No
Enclosed: No
Contiguous: Yes
Permitted: Yes
Wet space: No
Addition: No
Conversion: No

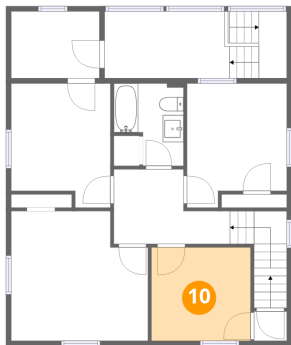
9 Floor 2 - Kitchen



Max Dimensions: 13'0" x 12'1"
Calculated Area: 157 sq. ft
Included: Yes

Heated: Yes
Finished: Yes
Enclosed: Yes
Contiguous: Yes
Permitted: Yes
Wet space: No
Addition: No
Conversion: No

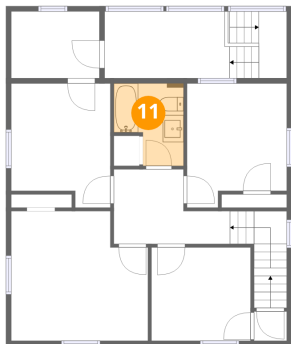
10 Floor 3 - Bedroom



Max Dimensions: 9'6" x 8'11"
Calculated Area: 85 sq. ft
Included: Yes

Heated: Yes
Finished: Yes
Enclosed: Yes
Contiguous: Yes
Permitted: Yes
Wet space: No
Addition: No
Conversion: No

11 Floor 3 - Bath

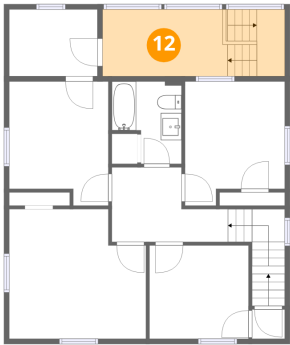


Max Dimensions: 6'8" x 7'11"
Calculated Area: 44 sq. ft
Included: Yes

Heated: Yes
Finished: Yes
Enclosed: Yes
Contiguous: Yes
Permitted: Yes
Wet space: Yes
Addition: No
Conversion: No

2431 Delaware Avenue Northwest, Melrose, Roanoke, Roanoke city, Virginia, United States, 24017

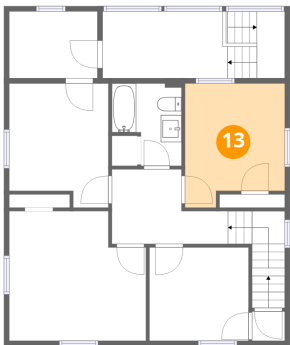
12 Floor 3 - Sunroom



Max Dimensions: 12'0" x 6'5"
Calculated Area: 112 sq. ft
Included: Yes

Heated: Yes
Finished: Yes
Enclosed: Yes
Contiguous: Yes
Permitted: Yes
Wet space: No
Addition: No
Conversion: No

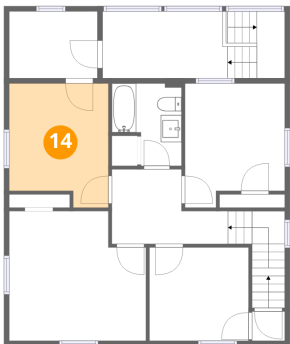
13 Floor 3 - Bedroom



Max Dimensions: 9'7" x 11'11"
Calculated Area: 103 sq. ft
Included: Yes

Heated: Yes
Finished: Yes
Enclosed: Yes
Contiguous: Yes
Permitted: Yes
Wet space: No
Addition: No
Conversion: No

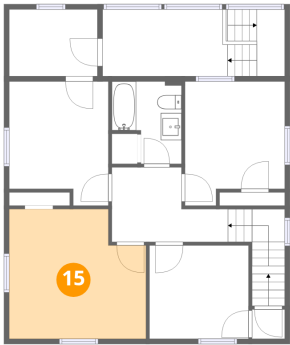
14 Floor 3 - Bedroom



Max Dimensions: 9'6" x 11'11"
Calculated Area: 103 sq. ft
Included: Yes

Heated: Yes
Finished: Yes
Enclosed: Yes
Contiguous: Yes
Permitted: Yes
Wet space: No
Addition: No
Conversion: No

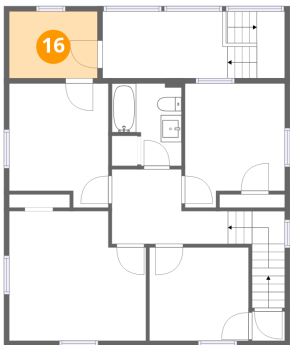
15 Floor 3 - Bedroom



Max Dimensions: 13'1" x 12'5"
Calculated Area: 151 sq. ft
Included: Yes

Heated: Yes
Finished: Yes
Enclosed: Yes
Contiguous: Yes
Permitted: Yes
Wet space: No
Addition: No
Conversion: No

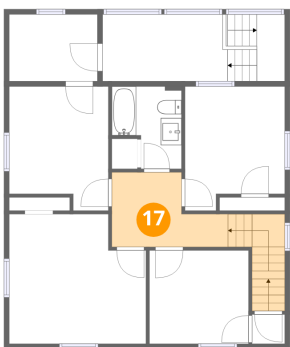
16 Floor 3 - W.I.C.



Max Dimensions: 8'6" x 6'5"
Calculated Area: 54 sq. ft
Included: Yes

Heated: Yes
Finished: Yes
Enclosed: Yes
Contiguous: Yes
Permitted: Yes
Wet space: No
Addition: No
Conversion: No

17 Floor 3 - Hall

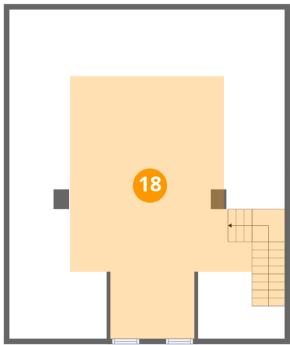


Max Dimensions: 11'2" x 7'2"
Calculated Area: 98 sq. ft
Included: Yes

Heated: Yes
Finished: Yes
Enclosed: Yes
Contiguous: Yes
Permitted: Yes
Wet space: No
Addition: No
Conversion: No

2431 Delaware Avenue Northwest, Melrose, Roanoke, Roanoke city, Virginia, United States, 24017

18 Floor 4 - Attic



Max Dimensions: 26'5" x 31'7"
Calculated Area: 374 sq. ft
Included: No

Heated: No
Finished: No
Enclosed: Yes
Contiguous: Yes
Permitted: Yes
Wet space: No
Addition: No
Conversion: No