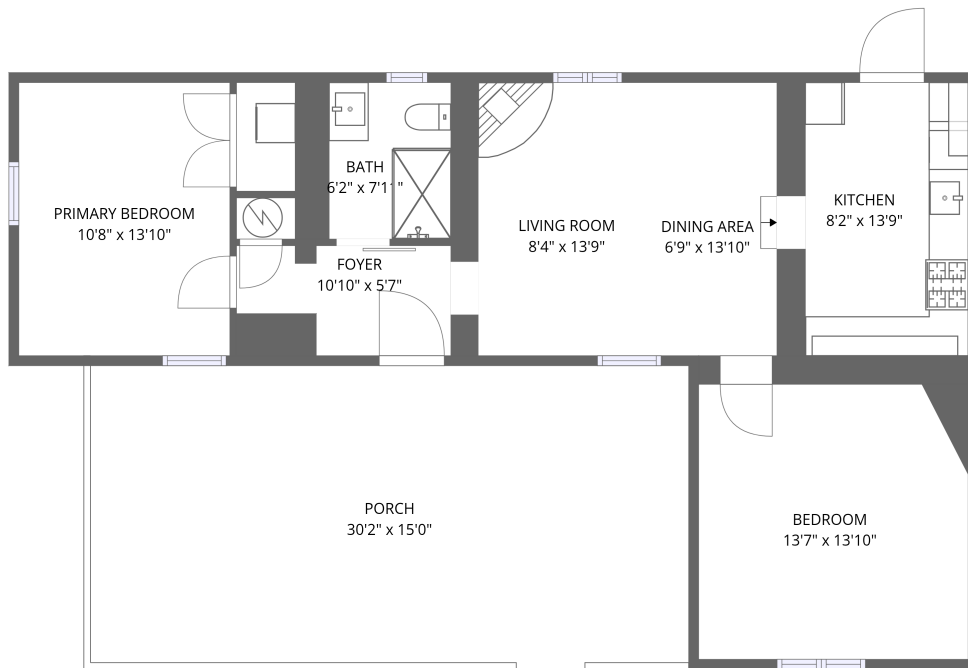


Home data report

824 Dunlap St apt a, Santa Fe, NM, US



1st floor


Total Area: 870 sq. ft

1st Floor: 870 sq. ft

Excluded: Porch 453 sq. ft, Walls: 76 sq. ft

Property summary

 **1** Floors

 **2** Bedrooms

 **1** Bathrooms

824 Dunlap St apt a, Santa Fe, NM, US



Room dimensions

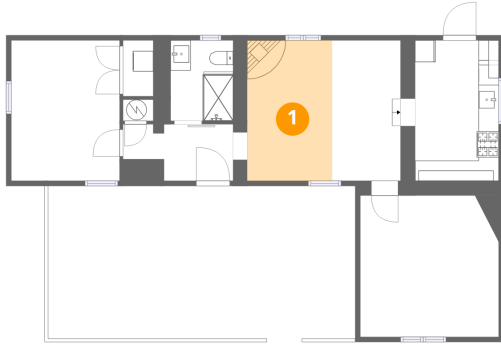
Floor 1

Total: 870 sqft

Excluded: 453 sqft

#		Dimensions	sqft	Counted as living area
1	Living Room	8'4" x 13'9"	115 sq. ft	Yes
2	Porch	30'2" x 15'0"	453 sq. ft	No
3	Primary Bedroom	10'8" x 13'10"	147 sq. ft	Yes
4	Bedroom	13'7" x 13'10"	189 sq. ft	Yes
5	Foyer	10'10" x 5'7"	60 sq. ft	Yes
6	Bath	6'2" x 7'11"	49 sq. ft	Yes
7	Dining Area	6'9" x 13'10"	93 sq. ft	Yes
8	Kitchen	8'2" x 13'9"	113 sq. ft	Yes

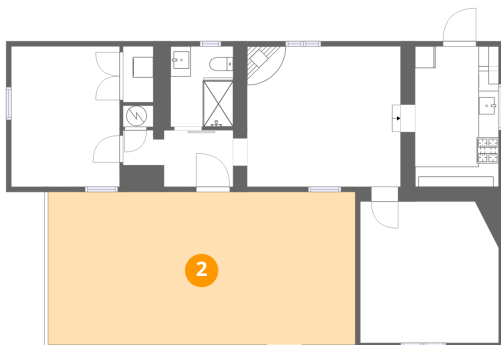
1 Floor 1 - Living Room



Dimensions: 8'4" x 13'9"
Area: 115 sq. ft
Counted as living area: Yes

Heated: Yes
Finished: Yes
Enclosed: Yes
Contiguous: Yes
Permitted: Yes
Wet space: No
Addition: No
Conversion: No

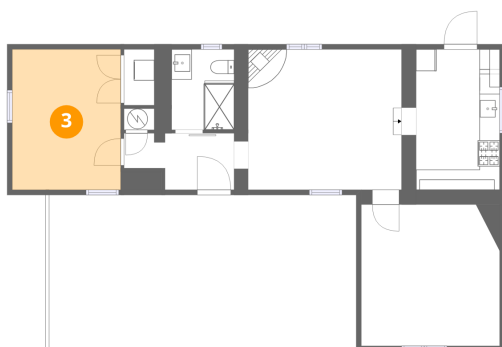
2 Floor 1 - Porch



Dimensions: 30'2" x 15'0"
Area: 453 sq. ft
Counted as living area: No

Heated: No
Finished: No
Enclosed: No
Contiguous: Yes
Permitted: Yes
Wet space: No
Addition: No
Conversion: No

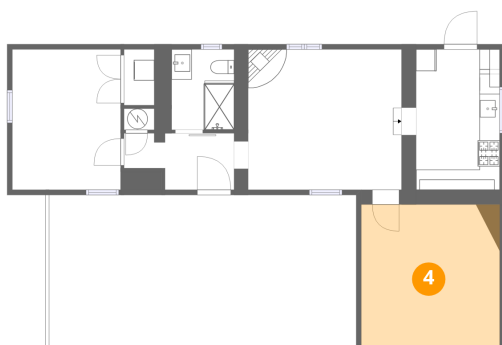
3 Floor 1 - Primary Bedroom



Dimensions: 10'8" x 13'10"
Area: 147 sq. ft
Counted as living area: Yes

Heated: Yes
Finished: Yes
Enclosed: Yes
Contiguous: Yes
Permitted: Yes
Wet space: No
Addition: No
Conversion: No

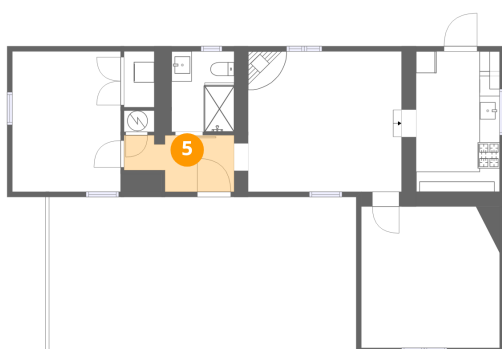
4 Floor 1 - Bedroom



Dimensions: 13'7" x 13'10"
Area: 189 sq. ft
Counted as living area: Yes

Heated: Yes
Finished: Yes
Enclosed: Yes
Contiguous: Yes
Permitted: Yes
Wet space: No
Addition: No
Conversion: No

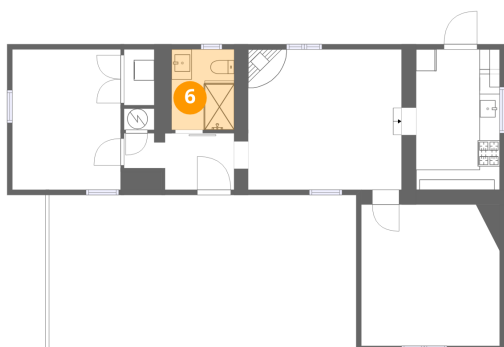
5 Floor 1 - Foyer



Dimensions: 10'10" x 5'7"
Area: 60 sq. ft
Counted as living area: Yes

Heated: Yes
Finished: Yes
Enclosed: Yes
Contiguous: Yes
Permitted: Yes
Wet space: No
Addition: No
Conversion: No

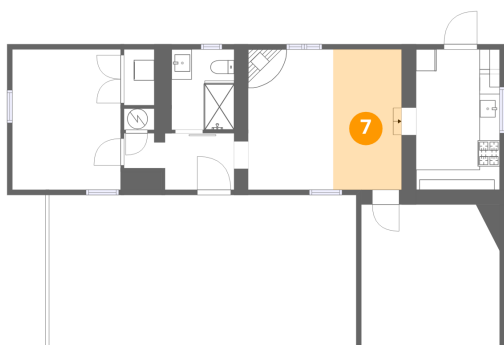
6 Floor 1 - Bath



Dimensions: 6'2" x 7'11"
Area: 49 sq. ft
Counted as living area: Yes

Heated: Yes
Finished: Yes
Enclosed: Yes
Contiguous: Yes
Permitted: Yes
Wet space: Yes
Addition: No
Conversion: No

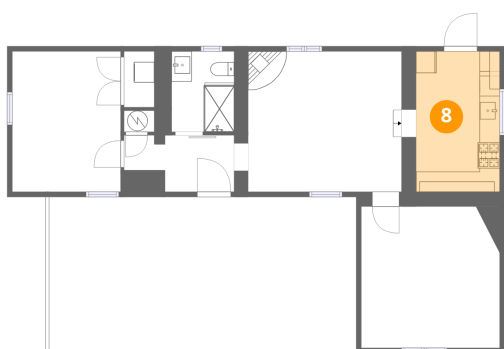
7 Floor 1 - Dining Area



Dimensions: 6'9" x 13'10"
Area: 93 sq. ft
Counted as living area: Yes

Heated: Yes
Finished: Yes
Enclosed: Yes
Contiguous: Yes
Permitted: Yes
Wet space: No
Addition: No
Conversion: No

8 Floor 1 - Kitchen



Dimensions: 8'2" x 13'9"
Area: 113 sq. ft
Counted as living area: Yes

Heated: Yes
Finished: Yes
Enclosed: Yes
Contiguous: Yes
Permitted: Yes
Wet space: No
Addition: No
Conversion: No