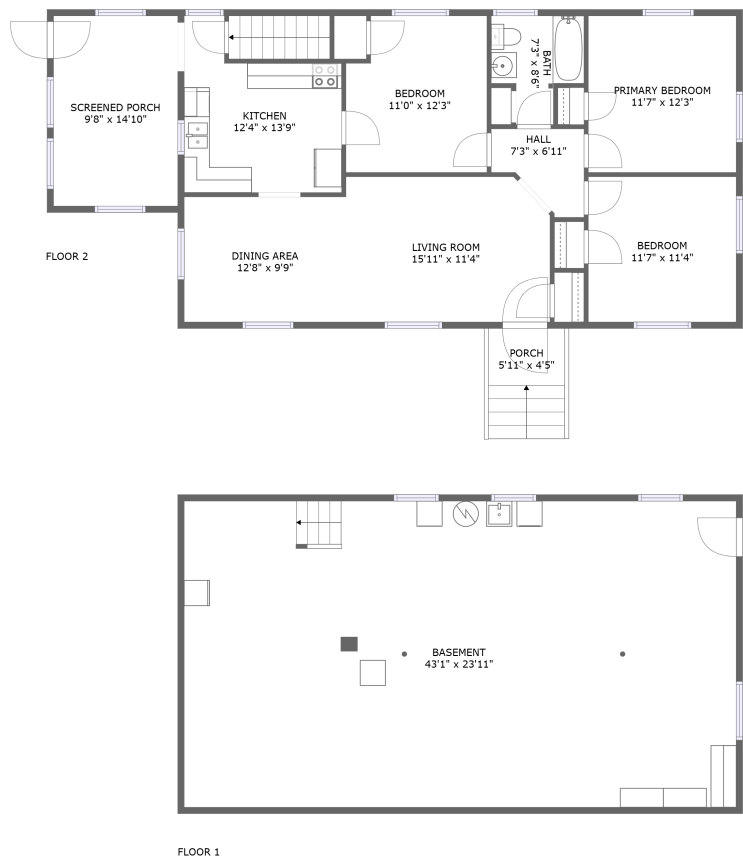


Home report

1121 Nover Avenue, Alpine Hills, Hollins, Roanoke, Roanoke County, Virginia, United States, 24019



Total Area: 1031 sq. ft

Below Ground: 0 sq. ft, Floor 2: 1031 sq. ft

Excluded: Basement 1031 sq. ft, Screened porch 144 sq. ft, Porch 51 sq. ft, Walls: 154 sq. ft

Property summary

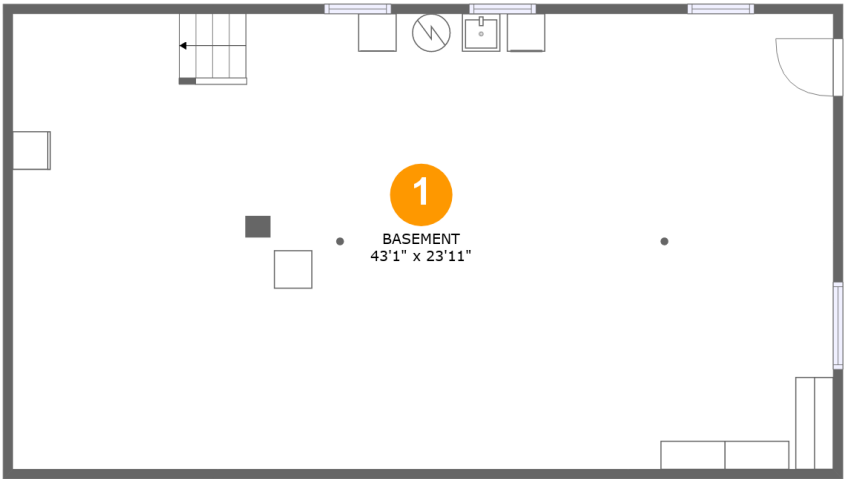
 **2** Floors

 **3** Bedrooms

 **1** Bathrooms

Home report

1121 Nover Avenue, Alpine Hills, Hollins, Roanoke, Roanoke County, Virginia, United States, 24019



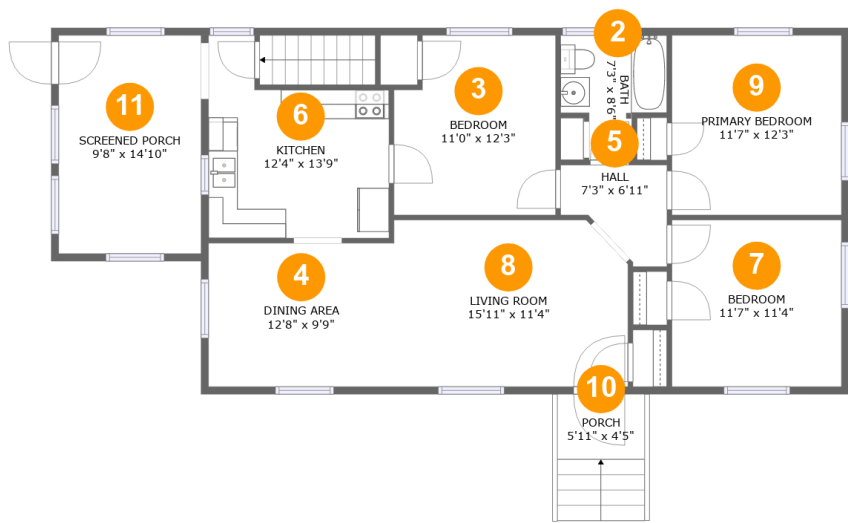
Room dimensions

Floor 1 Below ground Total:0sqft   Excluded: 1031sqft

#		Max Dimensions	sqft	Included
1	Basement	43'1" x 23'11"	1031 sq. ft	No

Home report

1121 Nover Avenue, Alpine Hills, Hollins, Roanoke, Roanoke County, Virginia, United States, 24019



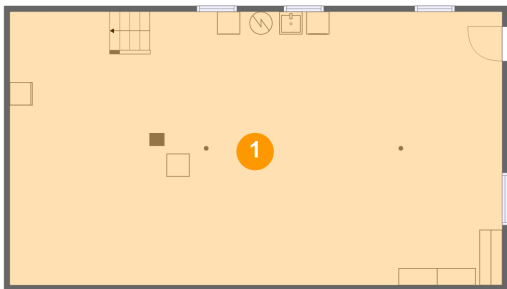
Room dimensions

Floor 2 Total:1031sqft Excluded: 195sqft

#		Max Dimensions	sqft	Included
2	Bath	7'3" x 8'6"	48 sq. ft	Yes
3	Bedroom	11'0" x 12'3"	128 sq. ft	Yes
4	Dining Area	12'8" x 9'9"	123 sq. ft	Yes
5	Hall	7'3" x 6'11"	38 sq. ft	Yes
6	Kitchen	12'4" x 13'9"	136 sq. ft	Yes
7	Bedroom	11'7" x 11'4"	131 sq. ft	Yes
8	Living Room	15'11" x 11'4"	177 sq. ft	Yes
9	Primary Bedroom	11'7" x 12'3"	141 sq. ft	Yes
10	Porch	5'11" x 4'5"	51 sq. ft	No
11	Screened Porch	9'8" x 14'10"	144 sq. ft	No

1121 Nover Avenue, Alpine Hills, Hollins, Roanoke, Roanoke County, Virginia, United States, 24019

1 Floor 1 - Basement



Max Dimensions: 43'1" x 23'11"  
Calculated Area: 1031 sq. ft  
Included: No

Heated: Yes  
Finished: No  
Enclosed: Yes  
Contiguous: Yes  
Permitted: Yes  
Wet space: No  
Addition: No  
Conversion: No

2 Floor 2 - Bath

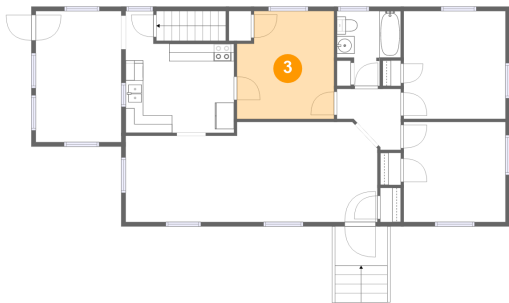


Max Dimensions: 7'3" x 8'6"  
Calculated Area: 48 sq. ft  
Included: Yes

Heated: Yes  
Finished: Yes  
Enclosed: Yes  
Contiguous: Yes  
Permitted: Yes  
Wet space: Yes  
Addition: No  
Conversion: No

1121 Nover Avenue, Alpine Hills, Hollins, Roanoke, Roanoke County, Virginia, United States, 24019

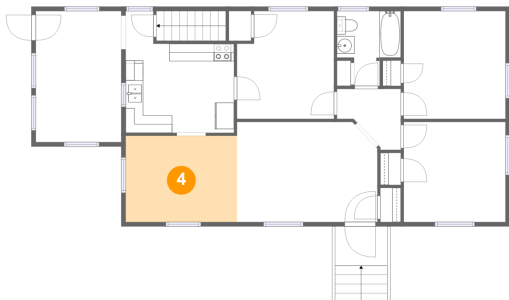
3 Floor 2 - Bedroom



Max Dimensions: 11'0" x 12'3"  
Calculated Area: 128 sq. ft  
Included: Yes

Heated: Yes  
Finished: Yes  
Enclosed: Yes  
Contiguous: Yes  
Permitted: Yes  
Wet space: No  
Addition: No  
Conversion: No

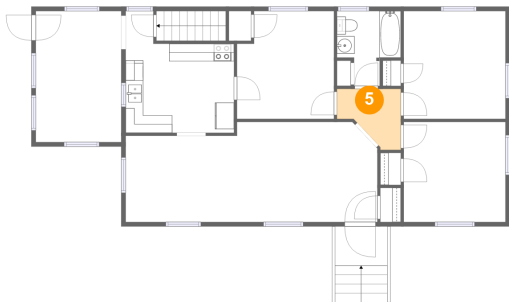
4 Floor 2 - Dining Area



Max Dimensions: 12'8" x 9'9"  
Calculated Area: 123 sq. ft  
Included: Yes

Heated: Yes  
Finished: Yes  
Enclosed: Yes  
Contiguous: Yes  
Permitted: Yes  
Wet space: No  
Addition: No  
Conversion: No

5 Floor 2 - Hall

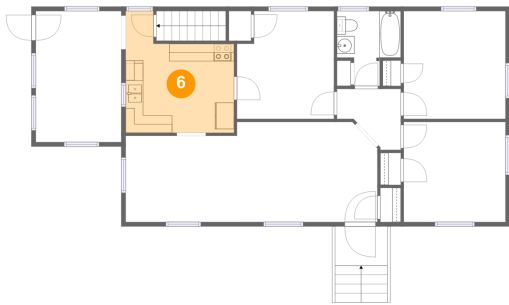


Max Dimensions: 7'3" x 6'11"  
Calculated Area: 38 sq. ft  
Included: Yes

Heated: Yes  
Finished: Yes  
Enclosed: Yes  
Contiguous: Yes  
Permitted: Yes  
Wet space: No  
Addition: No  
Conversion: No

1121 Nover Avenue, Alpine Hills, Hollins, Roanoke, Roanoke  
County, Virginia, United States, 24019

6 Floor 2 - Kitchen



Max Dimensions: 12'4" x 13'9"  
Calculated Area: 136 sq. ft  
Included: Yes

Heated: Yes  
Finished: Yes  
Enclosed: Yes  
Contiguous: Yes  
Permitted: Yes  
Wet space: No  
Addition: No  
Conversion: No

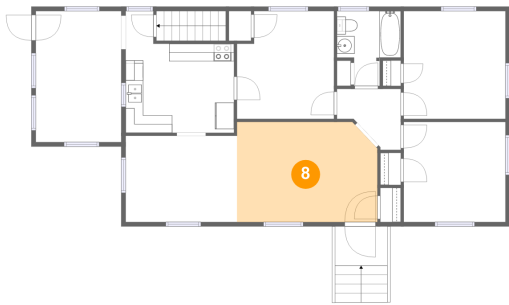
7 Floor 2 - Bedroom



Max Dimensions: 11'7" x 11'4"  
Calculated Area: 131 sq. ft  
Included: Yes

Heated: Yes  
Finished: Yes  
Enclosed: Yes  
Contiguous: Yes  
Permitted: Yes  
Wet space: No  
Addition: No  
Conversion: No

8 Floor 2 - Living Room



Max Dimensions: 15'11" x 11'4"  
Calculated Area: 177 sq. ft  
Included: Yes

Heated: Yes  
Finished: Yes  
Enclosed: Yes  
Contiguous: Yes  
Permitted: Yes  
Wet space: No  
Addition: No  
Conversion: No

1121 Nover Avenue, Alpine Hills, Hollins, Roanoke, Roanoke County, Virginia, United States, 24019

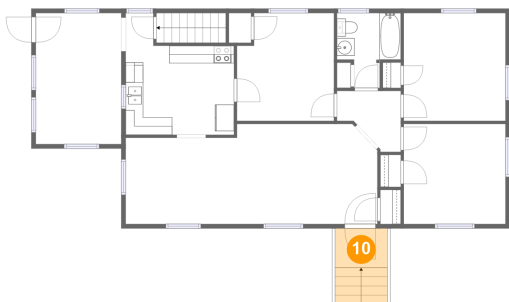
9 Floor 2 - Primary Bedroom



Max Dimensions: 11'7" x 12'3"  
Calculated Area: 141 sq. ft  
Included: Yes

Heated: Yes  
Finished: Yes  
Enclosed: Yes  
Contiguous: Yes  
Permitted: Yes  
Wet space: No  
Addition: No  
Conversion: No

10 Floor 2 - Porch



Max Dimensions: 5'11" x 4'5"  
Calculated Area: 51 sq. ft  
Included: No

Heated: No  
Finished: Yes  
Enclosed: No  
Contiguous: Yes  
Permitted: Yes  
Wet space: No  
Addition: No  
Conversion: No

11 Floor 2 - Screened Porch



Max Dimensions: 9'8" x 14'10"  
Calculated Area: 144 sq. ft  
Included: No

Heated: No  
Finished: Yes  
Enclosed: No  
Contiguous: Yes  
Permitted: Yes  
Wet space: No  
Addition: No  
Conversion: No