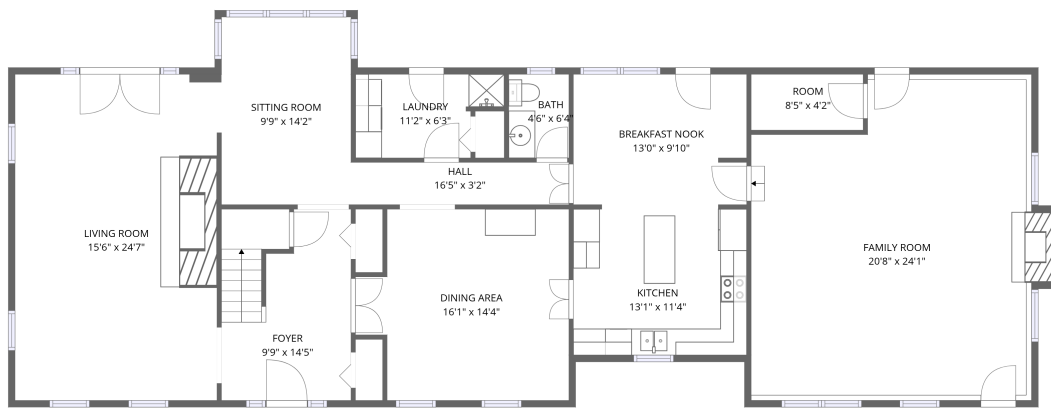
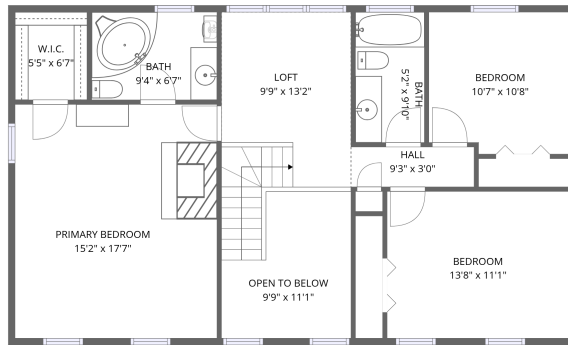


## Home data report

1530 Royal Orchard Drive, Cumberland, Ontario, Canada, K4C 1A9

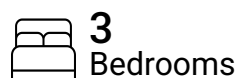


**Total Area: 2809 sq. ft**

1st Floor: 1876 sq. ft, 2nd Floor: 933 sq. ft

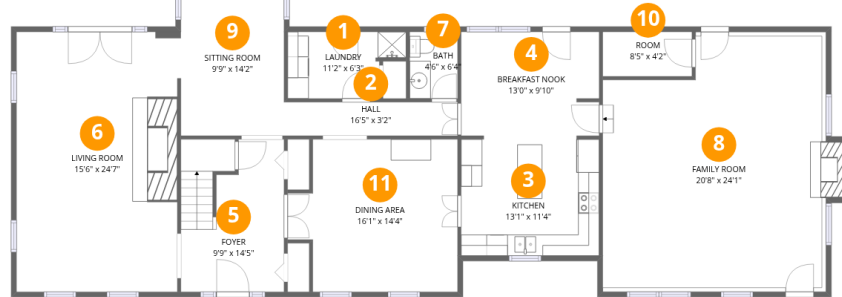
Excluded: Fireplace 11 sq. ft, Open to below 90 sq. ft, Walls: 174 sq. ft

## Property summary



## Home data report

1530 Royal Orchard Drive, Cumberland, Ontario, Canada, K4C 1A9



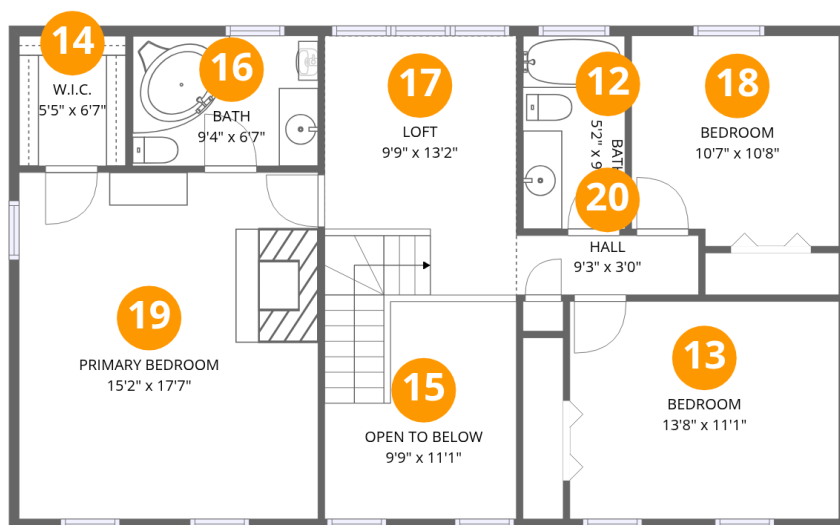
## Room dimensions

Floor 1

Total:1876sqft Excluded: 11sqft

| #  |                | Dimensions    | sqft       | Counted as living area |
|----|----------------|---------------|------------|------------------------|
| 1  | Laundry        | 11'2" x 6'3"  | 70 sq. ft  | Yes                    |
| 2  | Hall           | 16'5" x 3'2"  | 52 sq. ft  | Yes                    |
| 3  | Kitchen        | 13'1" x 11'4" | 148 sq. ft | Yes                    |
| 4  | Breakfast Nook | 13'0" x 9'10" | 128 sq. ft | Yes                    |
| 5  | Foyer          | 9'9" x 14'5"  | 140 sq. ft | Yes                    |
| 6  | Living Room    | 15'6" x 24'7" | 381 sq. ft | Yes                    |
| 7  | Bath           | 4'6" x 6'4"   | 29 sq. ft  | Yes                    |
| 8  | Family Room    | 20'8" x 24'1" | 499 sq. ft | Yes                    |
| 9  | Sitting Room   | 9'9" x 14'2"  | 138 sq. ft | Yes                    |
| 10 | Room           | 8'5" x 4'2"   | 35 sq. ft  | Yes                    |
| 11 | Dining Area    | 16'1" x 14'4" | 231 sq. ft | Yes                    |

1530 Royal Orchard Drive, Cumberland, Ontario, Canada, K4C 1A9



Room dimensions

Floor 2

Total:933sqft Excluded: 90sqft

| #  |                 | Dimensions    | sqft       | Counted as living area |
|----|-----------------|---------------|------------|------------------------|
| 12 | Bath            | 5'2" x 9'10"  | 51 sq. ft  | Yes                    |
| 13 | Bedroom         | 13'8" x 11'1" | 151 sq. ft | Yes                    |
| 14 | W.I.C.          | 5'5" x 6'7"   | 36 sq. ft  | Yes                    |
| 15 | Open To Below   | 9'9" x 11'1"  | 108 sq. ft | No                     |
| 16 | Bath            | 9'4" x 6'7"   | 61 sq. ft  | Yes                    |
| 17 | Loft            | 9'9" x 13'2"  | 128 sq. ft | Yes                    |
| 18 | Bedroom         | 10'7" x 10'8" | 113 sq. ft | Yes                    |
| 19 | Primary Bedroom | 15'2" x 17'7" | 267 sq. ft | Yes                    |
| 20 | Hall            | 9'3" x 3'0"   | 27 sq. ft  | Yes                    |

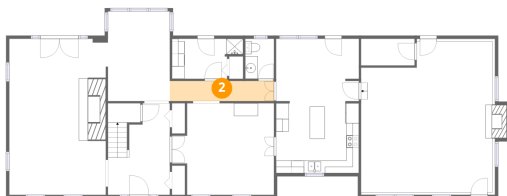
## 1 Floor 1 - Laundry



Dimensions: 11'2" x 6'3"  
Area: 70 sq. ft  
Counted as living area: Yes

Heated: Yes  
Finished: Yes  
Enclosed: Yes  
Contiguous: Yes  
Permitted: Yes  
Wet space: No  
Addition: No  
Conversion: No

## 2 Floor 1 - Hall



Dimensions: 16'5" x 3'2"  
Area: 52 sq. ft  
Counted as living area: Yes

Heated: Yes  
Finished: Yes  
Enclosed: Yes  
Contiguous: Yes  
Permitted: Yes  
Wet space: No  
Addition: No  
Conversion: No

### 3 Floor 1 - Kitchen



Dimensions: 13'1" x 11'4"  
Area: 148 sq. ft  
Counted as living area: Yes

Heated: Yes  
Finished: Yes  
Enclosed: Yes  
Contiguous: Yes  
Permitted: Yes  
Wet space: No  
Addition: No  
Conversion: No

### 4 Floor 1 - Breakfast Nook



Dimensions: 13'0" x 9'10"  
Area: 128 sq. ft  
Counted as living area: Yes

Heated: Yes  
Finished: Yes  
Enclosed: Yes  
Contiguous: Yes  
Permitted: Yes  
Wet space: No  
Addition: No  
Conversion: No

### 5 Floor 1 - Foyer



Dimensions: 9'9" x 14'5"  
Area: 140 sq. ft  
Counted as living area: Yes

Heated: Yes  
Finished: Yes  
Enclosed: Yes  
Contiguous: Yes  
Permitted: Yes  
Wet space: No  
Addition: No  
Conversion: No

### 6 Floor 1 - Living Room



Dimensions: 15'6" x 24'7"  
Area: 381 sq. ft  
Counted as living area: Yes

Heated: Yes  
Finished: Yes  
Enclosed: Yes  
Contiguous: Yes  
Permitted: Yes  
Wet space: No  
Addition: No  
Conversion: No

### 7 Floor 1 - Bath



Dimensions: 4'6" x 6'4"  
Area: 29 sq. ft  
Counted as living area: Yes

Heated: Yes  
Finished: Yes  
Enclosed: Yes  
Contiguous: Yes  
Permitted: Yes  
Wet space: Yes  
Addition: No  
Conversion: No

### 8 Floor 1 - Family Room



Dimensions: 20'8" x 24'1"  
Area: 499 sq. ft  
Counted as living area: Yes

Heated: Yes  
Finished: Yes  
Enclosed: Yes  
Contiguous: Yes  
Permitted: Yes  
Wet space: No  
Addition: No  
Conversion: No

### 9 Floor 1 - Sitting Room



Dimensions: 9'9" x 14'2"  
Area: 138 sq. ft  
Counted as living area: Yes

Heated: Yes  
Finished: Yes  
Enclosed: Yes  
Contiguous: Yes  
Permitted: Yes  
Wet space: No  
Addition: No  
Conversion: No

### 10 Floor 1 - Room



Dimensions: 8'5" x 4'2"  
Area: 35 sq. ft  
Counted as living area: Yes

Heated: Yes  
Finished: Yes  
Enclosed: Yes  
Contiguous: Yes  
Permitted: Yes  
Wet space: No  
Addition: No  
Conversion: No

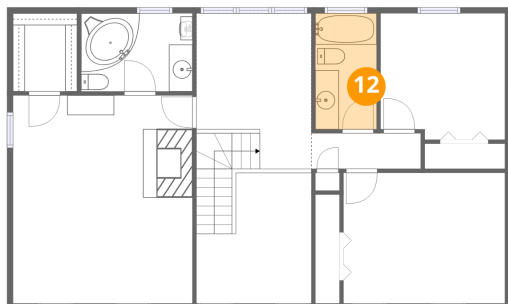
### 11 Floor 1 - Dining Area



Dimensions: 16'1" x 14'4"  
Area: 231 sq. ft  
Counted as living area: Yes

Heated: Yes  
Finished: Yes  
Enclosed: Yes  
Contiguous: Yes  
Permitted: Yes  
Wet space: No  
Addition: No  
Conversion: No

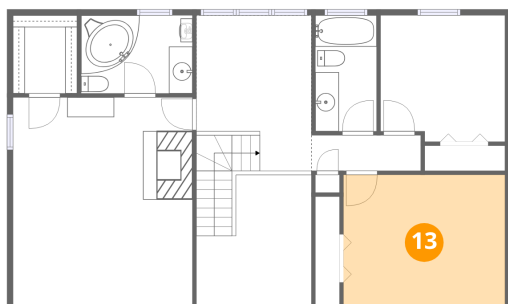
**12** Floor 2 - Bath



Dimensions: 5'2" x 9'10"  
Area: 51 sq. ft  
Counted as living area: Yes

Heated: Yes  
Finished: Yes  
Enclosed: Yes  
Contiguous: Yes  
Permitted: Yes  
Wet space: Yes  
Addition: No  
Conversion: No

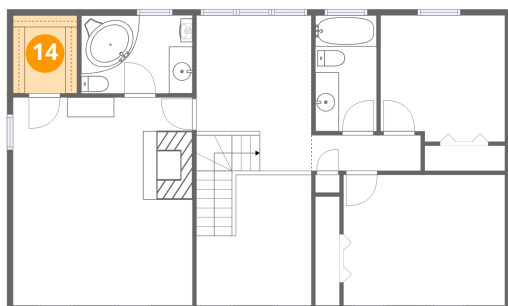
**13** Floor 2 - Bedroom



Dimensions: 13'8" x 11'1"  
Area: 151 sq. ft  
Counted as living area: Yes

Heated: Yes  
Finished: Yes  
Enclosed: Yes  
Contiguous: Yes  
Permitted: Yes  
Wet space: No  
Addition: No  
Conversion: No

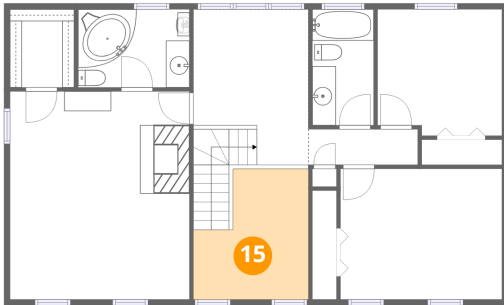
**14** Floor 2 - W.I.C.



Dimensions: 5'5" x 6'7"  
Area: 36 sq. ft  
Counted as living area: Yes

Heated: Yes  
Finished: Yes  
Enclosed: Yes  
Contiguous: Yes  
Permitted: Yes  
Wet space: No  
Addition: No  
Conversion: No

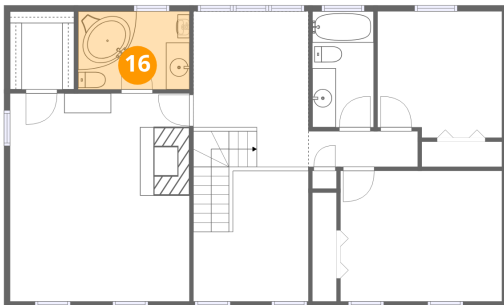
**15** Floor 2 - Open To Below



Dimensions: 9'9" x 11'1"  
Area: 108 sq. ft  
Counted as living area: No

Heated: No  
Finished: No  
Enclosed: No  
Contiguous: Yes  
Permitted: No  
Wet space: No  
Addition: No  
Conversion: No

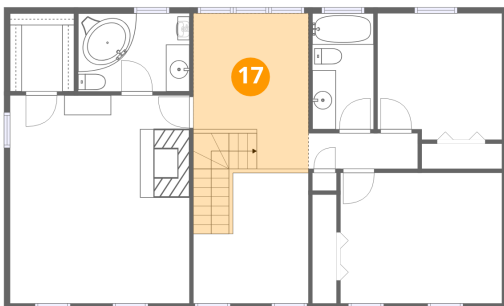
**16** Floor 2 - Bath



Dimensions: 9'4" x 6'7"  
Area: 61 sq. ft  
Counted as living area: Yes

Heated: Yes  
Finished: Yes  
Enclosed: Yes  
Contiguous: Yes  
Permitted: Yes  
Wet space: Yes  
Addition: No  
Conversion: No

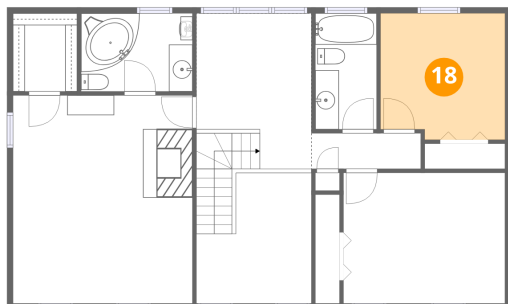
**17** Floor 2 - Loft



Dimensions: 9'9" x 13'2"  
Area: 128 sq. ft  
Counted as living area: Yes

Heated: Yes  
Finished: Yes  
Enclosed: Yes  
Contiguous: Yes  
Permitted: Yes  
Wet space: No  
Addition: No  
Conversion: No

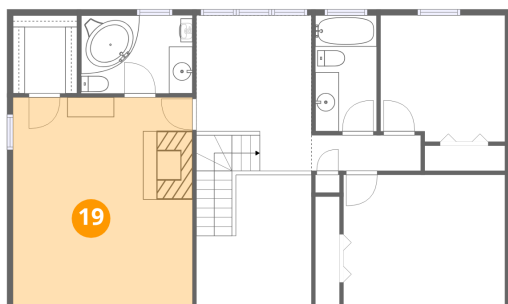
**18** Floor 2 - Bedroom



Dimensions: 10'7" x 10'8"  
Area: 113 sq. ft  
Counted as living area: Yes

Heated: Yes  
Finished: Yes  
Enclosed: Yes  
Contiguous: Yes  
Permitted: Yes  
Wet space: No  
Addition: No  
Conversion: No

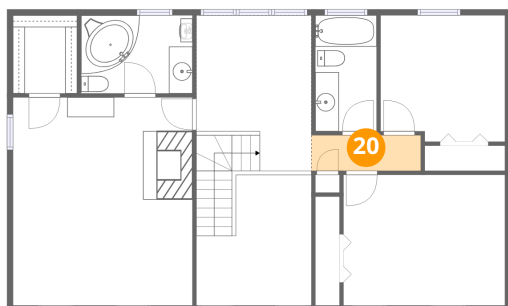
**19** Floor 2 - Primary Bedroom



Dimensions: 15'2" x 17'7"  
Area: 267 sq. ft  
Counted as living area: Yes

Heated: Yes  
Finished: Yes  
Enclosed: Yes  
Contiguous: Yes  
Permitted: Yes  
Wet space: No  
Addition: No  
Conversion: No

**20** Floor 2 - Hall



Dimensions: 9'3" x 3'0"  
Area: 27 sq. ft  
Counted as living area: Yes

Heated: Yes  
Finished: Yes  
Enclosed: Yes  
Contiguous: Yes  
Permitted: Yes  
Wet space: No  
Addition: No  
Conversion: No