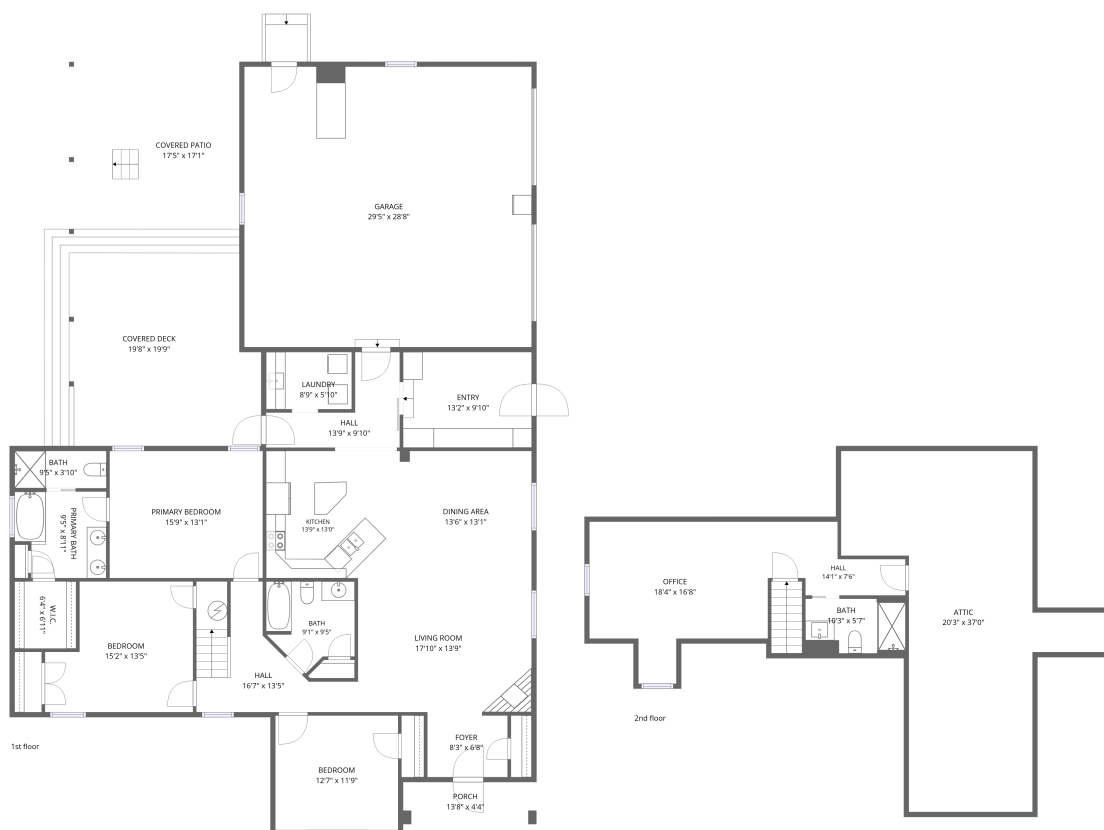


Home data report

1040 Old Station Loop, Hardy, Bedford County, Virginia, United States, 24101



Total Area: 2347 sq. ft

1st Floor: 1939 sq. ft, 2nd Floor: 408 sq. ft

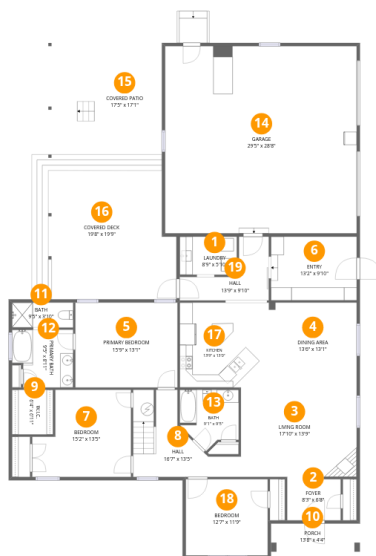
Excluded: Porch 59 sq. ft, Covered deck 410 sq. ft, Covered patio 300 sq. ft, Garage 847 sq. ft, Attic 576 sq. ft, Walls: 243 sq. ft

Property summary



Home data report

1040 Old Station Loop, Hardy, Bedford County, Virginia, United States, 24101



Room dimensions

Floor 1

Total:1939sqft

Excluded: 1616sqft

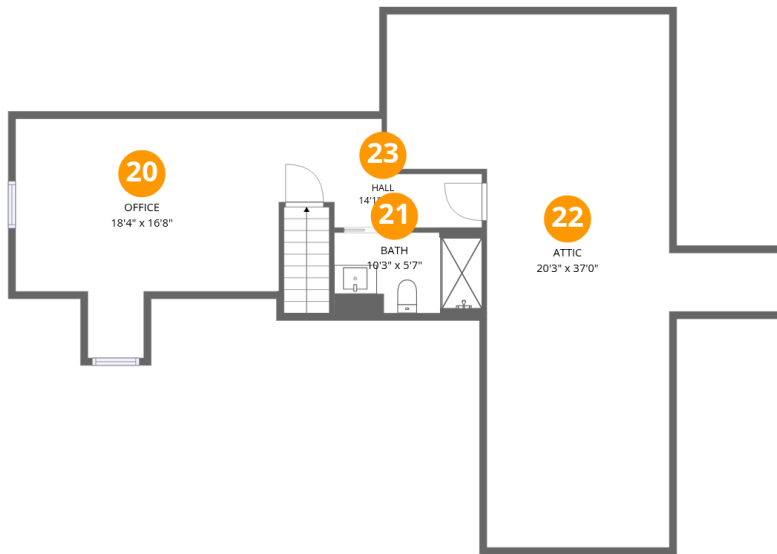
#		Dimensions	sqft	Counted as living area
1	Laundry	8'9" x 5'10"	52 sq. ft	Yes
2	Foyer	8'3" x 6'8"	54 sq. ft	Yes
3	Living Room	17'10" x 13'9"	245 sq. ft	Yes
4	Dining Area	13'6" x 13'1"	176 sq. ft	Yes
5	Primary Bedroom	15'9" x 13'1"	205 sq. ft	Yes
6	Entry	13'2" x 9'10"	129 sq. ft	Yes
7	Bedroom	15'2" x 13'5"	178 sq. ft	Yes
8	Hall	16'7" x 13'5"	131 sq. ft	Yes
9	W.I.C.	6'4" x 6'11"	44 sq. ft	Yes
10	Porch	13'8" x 4'4"	59 sq. ft	No
11	Bath	9'5" x 3'10"	36 sq. ft	Yes

Home data report

1040 Old Station Loop, Hardy, Bedford County, Virginia, United States, 24101

#		Dimensions	sqft	Counted as living area
12	Primary Bath	9'5" x 8'11"	77 sq. ft	Yes
13	Bath	9'1" x 9'5"	70 sq. ft	Yes
14	Garage	29'5" x 28'8"	847 sq. ft	No
15	Covered Patio	17'5" x 17'1"	300 sq. ft	No
16	Covered Deck	19'8" x 19'9"	410 sq. ft	No
17	Kitchen	13'9" x 13'0"	181 sq. ft	Yes
18	Bedroom	12'7" x 11'9"	148 sq. ft	Yes
19	Hall	13'9" x 9'10"	78 sq. ft	Yes

1040 Old Station Loop, Hardy, Bedford County, Virginia, United States, 24101



Room dimensions

Floor 2

Total:408sqft

Excluded: 576sqft

#		Dimensions	sqft	Counted as living area
20	Office	18'4" x 16'8"	238 sq. ft	Yes
21	Bath	10'3" x 5'7"	58 sq. ft	Yes
22	Attic	20'3" x 37'0"	576 sq. ft	No
23	Hall	14'1" x 7'6"	73 sq. ft	Yes

1040 Old Station Loop, Hardy, Bedford County, Virginia, United States, 24101

1 Floor 1 - Laundry



Dimensions: 8'9" x 5'10"
Area: 52 sq. ft
Counted as living area: Yes

Heated: Yes
Finished: Yes
Enclosed: Yes
Contiguous: Yes
Permitted: Yes
Wet space: No
Addition: No
Conversion: No

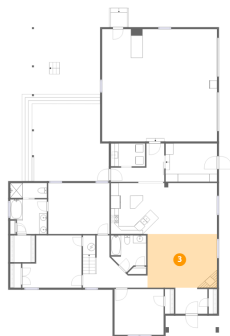
2 Floor 1 - Foyer



Dimensions: 8'3" x 6'8"
Area: 54 sq. ft
Counted as living area: Yes

Heated: Yes
Finished: Yes
Enclosed: Yes
Contiguous: Yes
Permitted: Yes
Wet space: No
Addition: No
Conversion: No

3 Floor 1 - Living Room



Dimensions: 17'10" x 13'9"
Area: 245 sq. ft
Counted as living area: Yes

Heated: Yes
Finished: Yes
Enclosed: Yes
Contiguous: Yes
Permitted: Yes
Wet space: No
Addition: No
Conversion: No

4 Floor 1 - Dining Area



Dimensions: 13'6" x 13'1"
Area: 176 sq. ft
Counted as living area: Yes

Heated: Yes
Finished: Yes
Enclosed: Yes
Contiguous: Yes
Permitted: Yes
Wet space: No
Addition: No
Conversion: No

5 Floor 1 - Primary Bedroom



Dimensions: 15'9" x 13'1"
Area: 205 sq. ft
Counted as living area: Yes

Heated: Yes
Finished: Yes
Enclosed: Yes
Contiguous: Yes
Permitted: Yes
Wet space: No
Addition: No
Conversion: No

6 Floor 1 - Entry



Dimensions: 13'2" x 9'10"
Area: 129 sq. ft
Counted as living area: Yes

Heated: Yes
Finished: Yes
Enclosed: Yes
Contiguous: Yes
Permitted: Yes
Wet space: No
Addition: No
Conversion: No

7 Floor 1 - Bedroom



Dimensions: 15'2" x 13'5"
Area: 178 sq. ft
Counted as living area: Yes

Heated: Yes
Finished: Yes
Enclosed: Yes
Contiguous: Yes
Permitted: Yes
Wet space: No
Addition: No
Conversion: No

8 Floor 1 - Hall



Dimensions: 16'7" x 13'5"
Area: 131 sq. ft
Counted as living area: Yes

Heated: Yes
Finished: Yes
Enclosed: Yes
Contiguous: Yes
Permitted: Yes
Wet space: No
Addition: No
Conversion: No

1040 Old Station Loop, Hardy, Bedford County, Virginia, United States, 24101

9 Floor 1 - W.I.C.



Dimensions: 6'4" x 6'11"
Area: 44 sq. ft
Counted as living area: Yes

Heated: Yes
Finished: Yes
Enclosed: Yes
Contiguous: Yes
Permitted: Yes
Wet space: No
Addition: No
Conversion: No

10 Floor 1 - Porch



Dimensions: 13'8" x 4'4"
Area: 59 sq. ft
Counted as living area: No

Heated: No
Finished: No
Enclosed: No
Contiguous: Yes
Permitted: Yes
Wet space: No
Addition: No
Conversion: No

11 Floor 1 - Bath



Dimensions: 9'5" x 3'10"
Area: 36 sq. ft
Counted as living area: Yes

Heated: Yes
Finished: Yes
Enclosed: Yes
Contiguous: Yes
Permitted: Yes
Wet space: Yes
Addition: No
Conversion: No

1040 Old Station Loop, Hardy, Bedford County, Virginia, United States, 24101

12 Floor 1 - Primary Bath



Dimensions: 9'5" x 8'11"
Area: 77 sq. ft
Counted as living area: Yes

Heated: Yes
Finished: Yes
Enclosed: Yes
Contiguous: Yes
Permitted: Yes
Wet space: Yes
Addition: No
Conversion: No

13 Floor 1 - Bath



Dimensions: 9'1" x 9'5"
Area: 70 sq. ft
Counted as living area: Yes

Heated: Yes
Finished: Yes
Enclosed: Yes
Contiguous: Yes
Permitted: Yes
Wet space: Yes
Addition: No
Conversion: No

14 Floor 1 - Garage



Dimensions: 29'5" x 28'8"
Area: 847 sq. ft
Counted as living area: No

Heated: No
Finished: No
Enclosed: Yes
Contiguous: Yes
Permitted: Yes
Wet space: No
Addition: No
Conversion: No

1040 Old Station Loop, Hardy, Bedford County, Virginia, United States, 24101

15 Floor 1 - Covered Patio



Dimensions: 17'5" x 17'1"
Area: 300 sq. ft
Counted as living area: No

Heated: No
Finished: No
Enclosed: No
Contiguous: Yes
Permitted: Yes
Wet space: No
Addition: No
Conversion: No

16 Floor 1 - Covered Deck



Dimensions: 19'8" x 19'9"
Area: 410 sq. ft
Counted as living area: No

Heated: No
Finished: No
Enclosed: No
Contiguous: Yes
Permitted: Yes
Wet space: No
Addition: No
Conversion: No

17 Floor 1 - Kitchen



Dimensions: 13'9" x 13'0"
Area: 181 sq. ft
Counted as living area: Yes

Heated: Yes
Finished: Yes
Enclosed: Yes
Contiguous: Yes
Permitted: Yes
Wet space: No
Addition: No
Conversion: No

1040 Old Station Loop, Hardy, Bedford County, Virginia, United States, 24101

18 Floor 1 - Bedroom



Dimensions: 12'7" x 11'9"
Area: 148 sq. ft
Counted as living area: Yes

Heated: Yes
Finished: Yes
Enclosed: Yes
Contiguous: Yes
Permitted: Yes
Wet space: No
Addition: No
Conversion: No

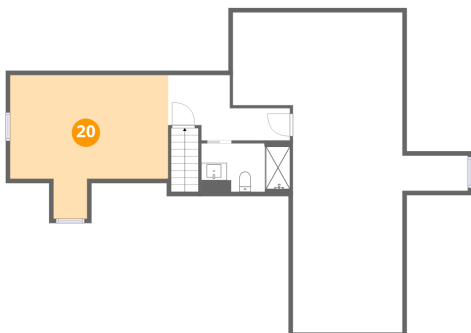
19 Floor 1 - Hall



Dimensions: 13'9" x 9'10"
Area: 78 sq. ft
Counted as living area: Yes

Heated: Yes
Finished: Yes
Enclosed: Yes
Contiguous: Yes
Permitted: Yes
Wet space: No
Addition: No
Conversion: No

20 Floor 2 - Office

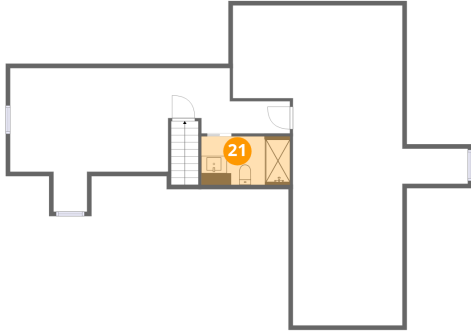


Dimensions: 18'4" x 16'8"
Area: 238 sq. ft
Counted as living area: Yes

Heated: Yes
Finished: Yes
Enclosed: Yes
Contiguous: Yes
Permitted: Yes
Wet space: No
Addition: No
Conversion: No

1040 Old Station Loop, Hardy, Bedford County, Virginia, United States, 24101

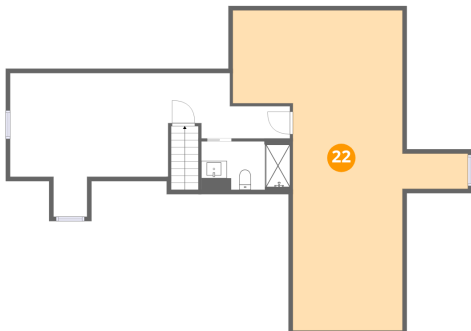
21 Floor 2 - Bath



Dimensions: 10'3" x 5'7"
Area: 58 sq. ft
Counted as living area: Yes

Heated: Yes
Finished: Yes
Enclosed: Yes
Contiguous: Yes
Permitted: Yes
Wet space: Yes
Addition: No
Conversion: No

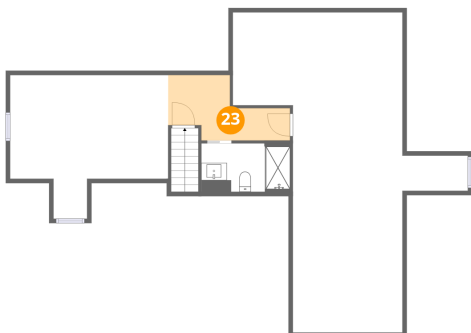
22 Floor 2 - Attic



Dimensions: 20'3" x 37'0"
Area: 576 sq. ft
Counted as living area: No

Heated: No
Finished: No
Enclosed: Yes
Contiguous: Yes
Permitted: Yes
Wet space: No
Addition: No
Conversion: No

23 Floor 2 - Hall



Dimensions: 14'1" x 7'6"
Area: 73 sq. ft
Counted as living area: Yes

Heated: Yes
Finished: Yes
Enclosed: Yes
Contiguous: Yes
Permitted: Yes
Wet space: No
Addition: No
Conversion: No