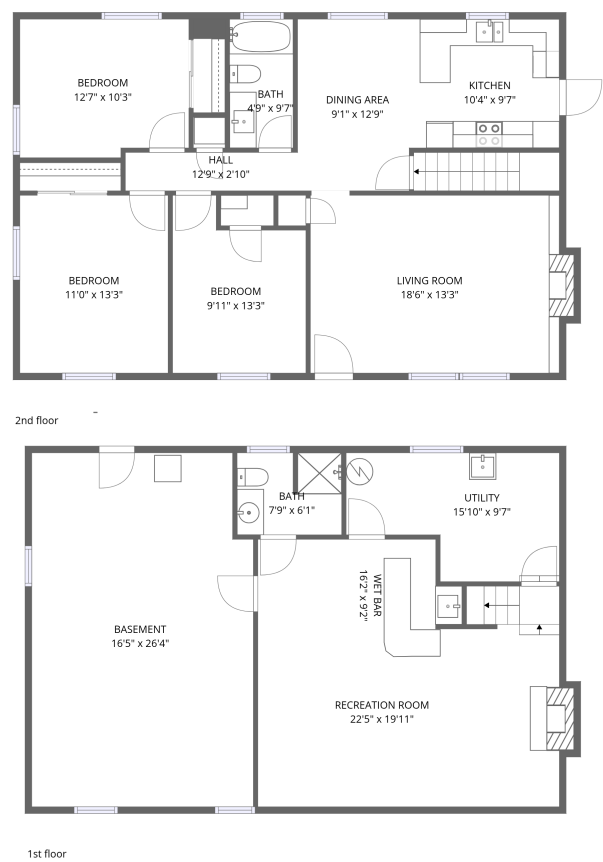


Home data report

659 Rainbow Forest Drive, Powhatan, Timberlake, Lynchburg,  
Campbell County, Virginia, United States, 24502




Total Area: 1540 sq. ft


1st Floor: 483 sq. ft, 2nd Floor: 1057 sq. ft

Excluded: Basement 423 sq. ft, Utility 127 sq. ft, Fireplace 12 sq. ft, Walls: 129 sq. ft

Property summary

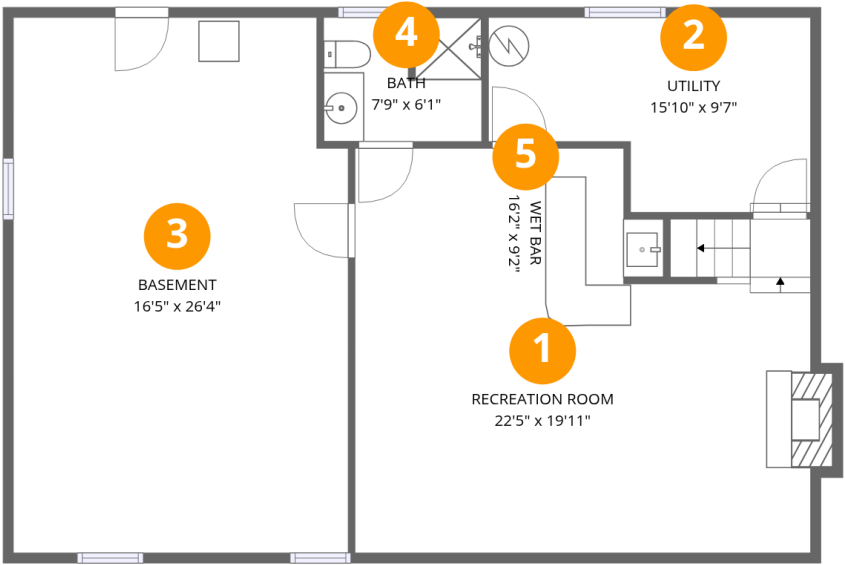
 **2** Floors

 **3** Bedrooms

 **2** Bathrooms

Home data report

659 Rainbow Forest Drive, Powhatan, Timberlake, Lynchburg,  
Campbell County, Virginia, United States, 24502

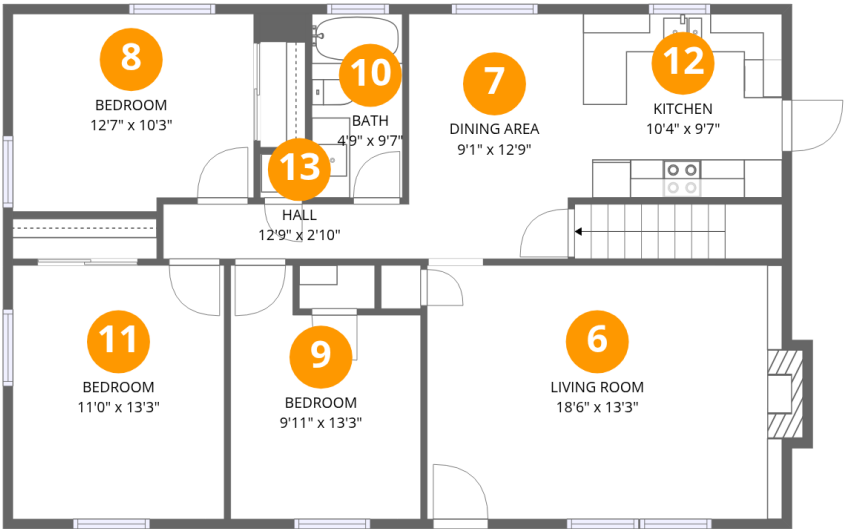


Room dimensions

Floor 1 Total:483sqft    Excluded: 556sqft

#		Dimensions	sqft	Counted as living area
1	Recreation Room	22'5" x 19'11"	445 sq. ft	Yes
2	Utility	15'10" x 9'7"	152 sq. ft	No
3	Basement	16'5" x 26'4"	432 sq. ft	No
4	Bath	7'9" x 6'1"	47 sq. ft	Yes
5	Wet Bar	16'2" x 9'2"	148 sq. ft	Yes

659 Rainbow Forest Drive, Powhatan, Timberlake, Lynchburg,  
Campbell County, Virginia, United States, 24502



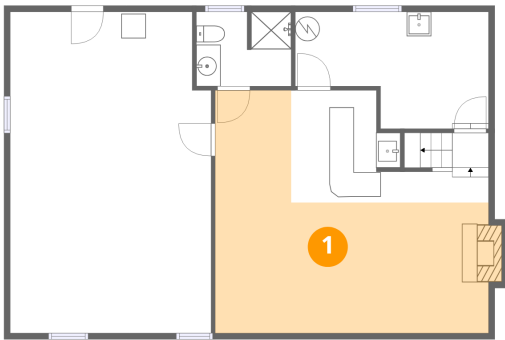
Room dimensions

Floor 2 Total:1057sqft   Excluded: 6sqft

#		Dimensions	sqft	Counted as living area
6	Living Room	18'6" x 13'3"	244 sq. ft	Yes
7	Dining Area	9'1" x 12'9"	116 sq. ft	Yes
8	Bedroom	12'7" x 10'3"	129 sq. ft	Yes
9	Bedroom	9'11" x 13'3"	131 sq. ft	Yes
10	Bath	4'9" x 9'7"	45 sq. ft	Yes
11	Bedroom	11'0" x 13'3"	146 sq. ft	Yes
12	Kitchen	10'4" x 9'7"	99 sq. ft	Yes
13	Hall	12'9" x 2'10"	36 sq. ft	Yes

659 Rainbow Forest Drive, Powhatan, Timberlake, Lynchburg,  
Campbell County, Virginia, United States, 24502

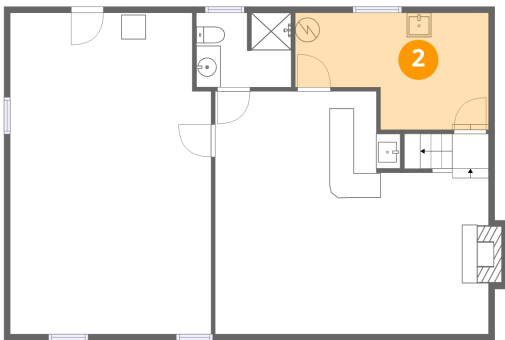
1 Floor 1 - Recreation Room



Dimensions: 22'5" x 19'11"  
Area: 445 sq. ft  
Counted as living area: Yes

Heated: Yes  
Finished: Yes  
Enclosed: Yes  
Contiguous: Yes  
Permitted: Yes  
Wet space: No  
Addition: No  
Conversion: No

2 Floor 1 - Utility

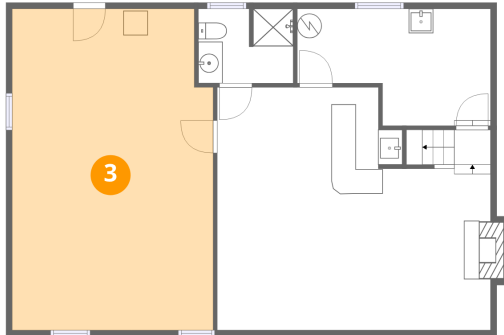


Dimensions: 15'10" x 9'7"  
Area: 152 sq. ft  
Counted as living area: No

Heated: Yes  
Finished: No  
Enclosed: Yes  
Contiguous: Yes  
Permitted: Yes  
Wet space: No  
Addition: No  
Conversion: No

659 Rainbow Forest Drive, Powhatan, Timberlake, Lynchburg,  
Campbell County, Virginia, United States, 24502

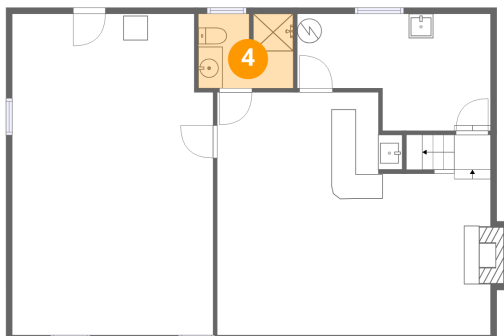
### 3 Floor 1 - Basement



Dimensions: 16'5" x 26'4"  
Area: 432 sq. ft  
Counted as living area: No

Heated: Yes  
Finished: No  
Enclosed: Yes  
Contiguous: Yes  
Permitted: Yes  
Wet space: No  
Addition: No  
Conversion: No

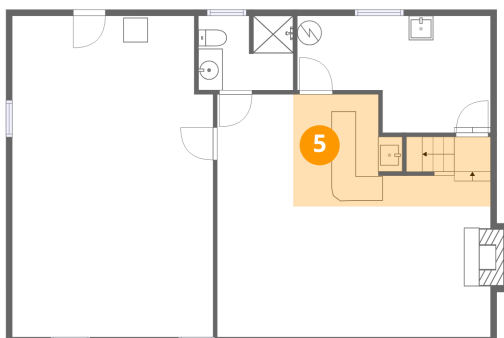
### 4 Floor 1 - Bath



Dimensions: 7'9" x 6'1"  
Area: 47 sq. ft  
Counted as living area: Yes

Heated: Yes  
Finished: Yes  
Enclosed: Yes  
Contiguous: Yes  
Permitted: Yes  
Wet space: Yes  
Addition: No  
Conversion: No

### 5 Floor 1 - Wet Bar



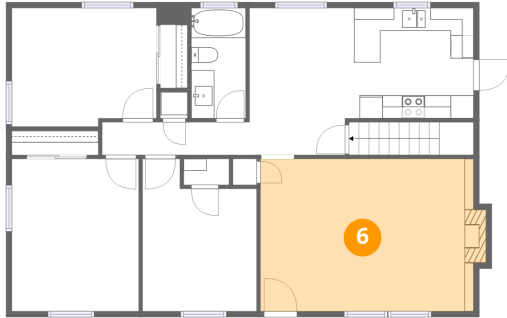
Dimensions: 16'2" x 9'2"  
Area: 148 sq. ft  
Counted as living area: Yes

Heated: Yes  
Finished: Yes  
Enclosed: Yes  
Contiguous: Yes  
Permitted: Yes  
Wet space: No  
Addition: No  
Conversion: No

## Home data report

659 Rainbow Forest Drive, Powhatan, Timberlake, Lynchburg,  
Campbell County, Virginia, United States, 24502

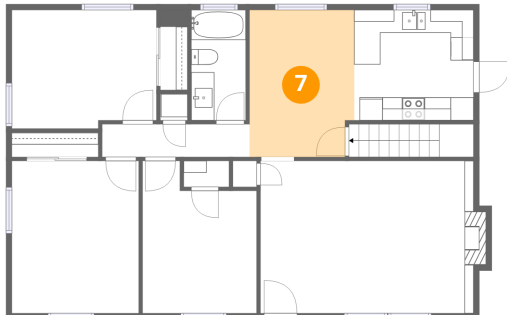
### 6 Floor 2 - Living Room



Dimensions: 18'6" x 13'3"  
Area: 244 sq. ft  
Counted as living area: Yes

Heated: Yes  
Finished: Yes  
Enclosed: Yes  
Contiguous: Yes  
Permitted: Yes  
Wet space: No  
Addition: No  
Conversion: No

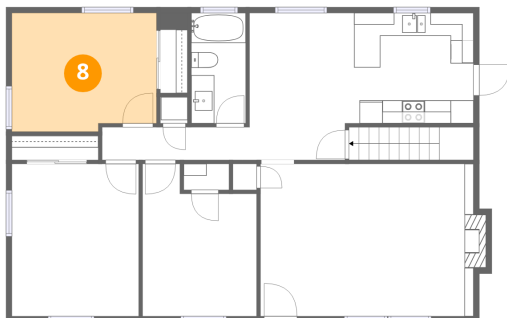
### 7 Floor 2 - Dining Area



Dimensions: 9'1" x 12'9"  
Area: 116 sq. ft  
Counted as living area: Yes

Heated: Yes  
Finished: Yes  
Enclosed: Yes  
Contiguous: Yes  
Permitted: Yes  
Wet space: No  
Addition: No  
Conversion: No

### 8 Floor 2 - Bedroom

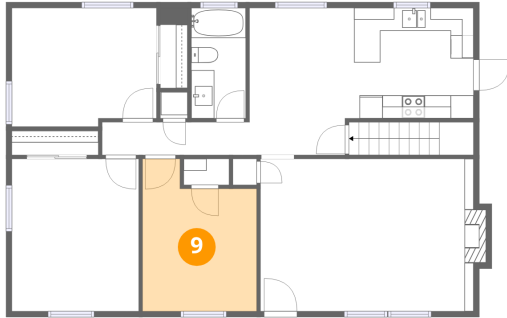


Dimensions: 12'7" x 10'3"  
Area: 129 sq. ft  
Counted as living area: Yes

Heated: Yes  
Finished: Yes  
Enclosed: Yes  
Contiguous: Yes  
Permitted: Yes  
Wet space: No  
Addition: No  
Conversion: No

659 Rainbow Forest Drive, Powhatan, Timberlake, Lynchburg,  
Campbell County, Virginia, United States, 24502

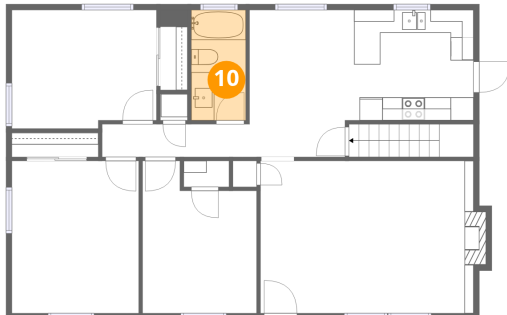
## 9 Floor 2 - Bedroom



Dimensions: 9'11" x 13'3"  
Area: 131 sq. ft  
Counted as living area: Yes

Heated: Yes  
Finished: Yes  
Enclosed: Yes  
Contiguous: Yes  
Permitted: Yes  
Wet space: No  
Addition: No  
Conversion: No

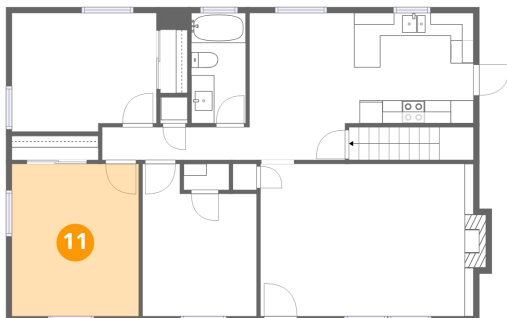
## 10 Floor 2 - Bath



Dimensions: 4'9" x 9'7"  
Area: 45 sq. ft  
Counted as living area: Yes

Heated: Yes  
Finished: Yes  
Enclosed: Yes  
Contiguous: Yes  
Permitted: Yes  
Wet space: Yes  
Addition: No  
Conversion: No

## 11 Floor 2 - Bedroom

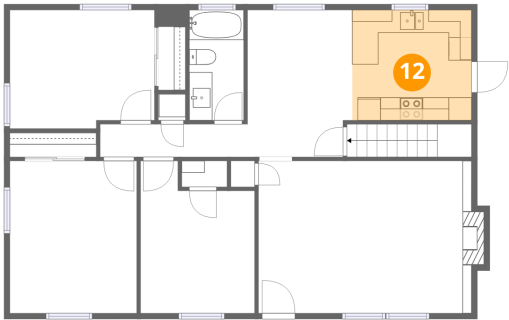


Dimensions: 11'0" x 13'3"  
Area: 146 sq. ft  
Counted as living area: Yes

Heated: Yes  
Finished: Yes  
Enclosed: Yes  
Contiguous: Yes  
Permitted: Yes  
Wet space: No  
Addition: No  
Conversion: No

659 Rainbow Forest Drive, Powhatan, Timberlake, Lynchburg,  
Campbell County, Virginia, United States, 24502

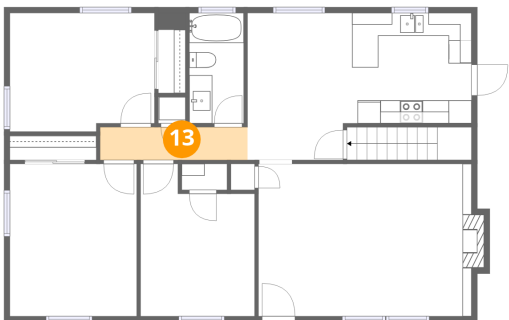
12 Floor 2 - Kitchen



Dimensions: 10'4" x 9'7"  
Area: 99 sq. ft  
Counted as living area: Yes

Heated: Yes  
Finished: Yes  
Enclosed: Yes  
Contiguous: Yes  
Permitted: Yes  
Wet space: No  
Addition: No  
Conversion: No

13 Floor 2 - Hall



Dimensions: 12'9" x 2'10"  
Area: 36 sq. ft  
Counted as living area: Yes

Heated: Yes  
Finished: Yes  
Enclosed: Yes  
Contiguous: Yes  
Permitted: Yes  
Wet space: No  
Addition: No  
Conversion: No