

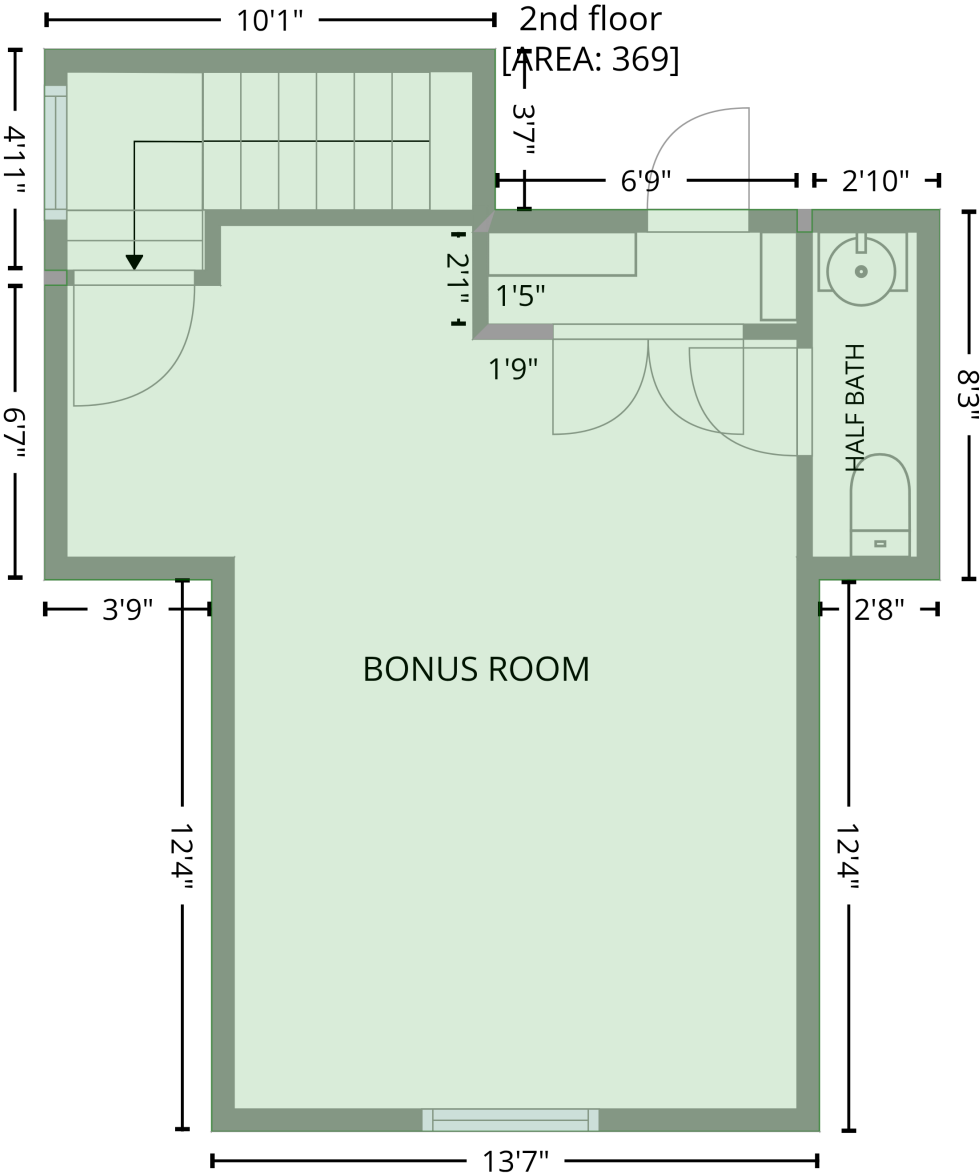
15738 Reynolds Drive, Fort Mill, Lancaster County, South Carolina, United States, 29707

Gross Living Area: 2771 sq. ft

Level 1

Space	Area (sq. ft)	Calculation <small>Coordinate Polygon Area Algorithm using inches</small>
GARAGE (Non-living area)	409	$-\left((46.6 + 46.6) * (447.5 - 490.6) + (46.6 + 237.7) * (490.6 - 490.6) + (237.7 + 237.7) * (490.6 - 659) + (237.7 + 243.7) * (659 - 659) + (243.7 + 243.7) * (659 - 731.9) + (243.7 + 3.4) * (731.9 - 731.9) + (3.4 + 3.4) * (731.9 - 447.5) + (3.4 + 46.6) * (447.5 - 447.5)\right) * 0.5 * 0.00694$
SCREENED PORCH (Non-living area)	120	$-\left((579.1 + 579.1) * (12.9 - 135.7) + (579.1 + 438.2) * (135.7 - 135.7) + (438.2 + 438.2) * (135.7 - 12.9) + (438.2 + 579.1) * (12.9 - 12.9)\right) * 0.5 * 0.00694$

Level 2



15738 Reynolds Drive, Fort Mill, Lancaster County, South Carolina, United States, 29707

Gross Living Area: 2771 sq. ft

Level 2

Space	Area (sq. ft)	Calculation <small>Coordinate Polygon Area Algorithm using inches</small>
2nd floor (Living area)	369	$\begin{aligned} & -((124.4 + 118.5) * (484.6 - 490.6) + (118.5 + 122.4) * (490.6 - 490.6) + (122.4 + 122.5) * (490.6 - \\ & 515.3) + (122.5 + 118.5) * (515.3 - 519.3) + (118.5 + 139.9) * (519.3 - 519.3) + (139.9 + 139.9) * \\ & (519.3 - 515.3) + (139.9 + 122.5) * (515.3 - 515.3) + (122.5 + 122.5) * (515.3 - 490.6) + (122.5 + \\ & 124.4) * (490.6 - 484.6)) * 0.5 * 0.00694 + -((211.4 + 211.4) * (583.9 - 731.9) + (211.4 + 48.3) * \\ & (731.9 - 731.9) + (48.3 + 48.3) * (731.9 - 583.9) + (48.3 + 3.4) * (583.9 - 583.9) + (3.4 + 3.4) * \\ & (583.9 - 504.8) + (3.4 + 9.4) * (504.8 - 504.8) + (9.4 + 9.4) * (504.8 - 500.8) + (9.4 + 3.4) * (500.8 - \\ & 500.8) + (3.4 + 3.4) * (500.8 - 441.5) + (3.4 + 124.4) * (441.5 - 441.5) + (124.4 + 124.4) * (441.5 - \\ & 484.6) + (124.4 + 205.4) * (484.6 - 484.6) + (205.4 + 205.4) * (484.6 - 490.6) + (205.4 + 209.4) * \\ & (490.6 - 490.6) + (209.4 + 209.4) * (490.6 - 484.6) + (209.4 + 243.7) * (484.6 - 484.6) + (243.7 + \\ & 243.7) * (484.6 - 583.9) + (243.7 + 211.4) * (583.9 - 583.9)) * 0.5 * 0.00694 \end{aligned}$