

Home data report

515 E 29th St Dr, Greeley, CO, US



Total Area: 2309 sq. ft

Basement: 1063 sq. ft, 1st Floor: 1246 sq. ft

Excluded: Utility 69 sq. ft, Hall 28 sq. ft, Garage 407 sq. ft, Porch 148 sq. ft, Covered patio 352 sq. ft, Walls: 193 sq. ft

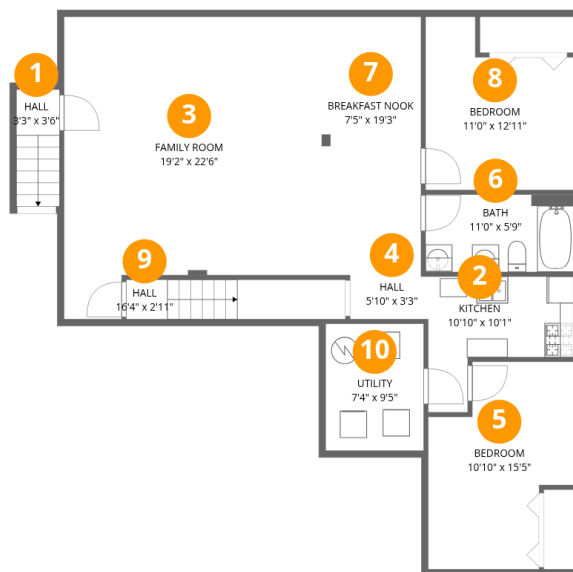
Property summary

 **2** Floors

 **5** Bedrooms

 **3** Bathrooms

 **1** Garages



Room dimensions

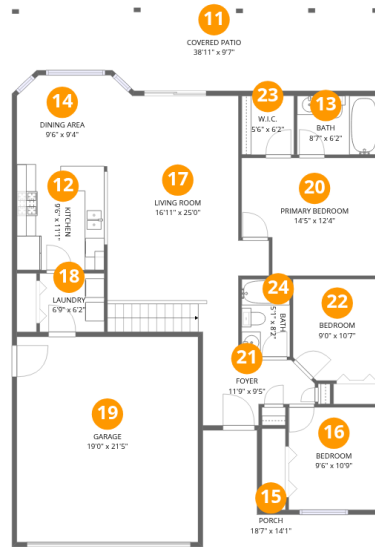
Floor 1 Below grade

Total:1063sqft Excluded: 97sqft

#		Dimensions	sqft	Counted as living area
1	Hall	3'3" x 3'6"	28 sq. ft	No
2	Kitchen	10'10" x 10'1"	77 sq. ft	Yes
3	Family Room	19'2" x 22'6"	382 sq. ft	Yes
4	Hall	5'10" x 3'3"	19 sq. ft	Yes
5	Bedroom	10'10" x 15'5"	138 sq. ft	Yes
6	Bath	11'0" x 5'9"	64 sq. ft	Yes
7	Breakfast Nook	7'5" x 19'3"	142 sq. ft	Yes
8	Bedroom	11'0" x 12'11"	120 sq. ft	Yes
9	Hall	16'4" x 2'11"	48 sq. ft	Yes
10	Utility	7'4" x 9'5"	69 sq. ft	No

Home data report

515 E 29th St Dr, Greeley, CO, US



Room dimensions

Floor 2

Total: 1246sqft

Excluded: 907sqft

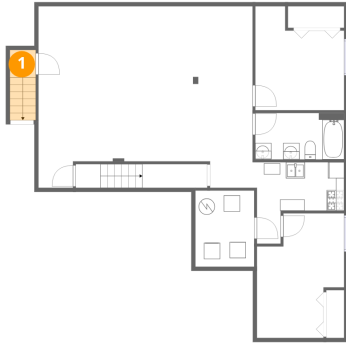
#		Dimensions	sqft	Counted as living area
11	Covered Patio	38'11" x 9'7"	352 sq. ft	No
12	Kitchen	9'6" x 11'1"	104 sq. ft	Yes
13	Bath	8'7" x 6'2"	53 sq. ft	Yes
14	Dining Area	9'6" x 9'4"	86 sq. ft	Yes
15	Porch	18'7" x 14'1"	148 sq. ft	No
16	Bedroom	9'6" x 10'9"	102 sq. ft	Yes
17	Living Room	16'11" x 25'0"	355 sq. ft	Yes
18	Laundry	6'9" x 6'2"	41 sq. ft	Yes
19	Garage	19'0" x 21'5"	407 sq. ft	No
20	Primary Bedroom	14'5" x 12'4"	165 sq. ft	Yes
21	Foyer	11'9" x 9'5"	74 sq. ft	Yes

Home data report

515 E 29th St Dr,Greeley,CO,US

#		Dimensions	sqft	Counted as living area
22	Bedroom	9'0" x 10'7"	93 sq. ft	Yes
23	W.I.C.	5'6" x 6'2"	34 sq. ft	Yes
24	Bath	5'1" x 8'2"	41 sq. ft	Yes

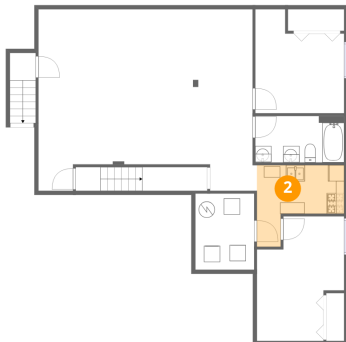
1 Floor 1 - Hall



Dimensions: 3'3" x 3'6"
Area: 28 sq. ft
Counted as living area: No

Heated: Yes
Finished: No
Enclosed: Yes
Contiguous: Yes
Permitted: Yes
Wet space: No
Addition: No
Conversion: No

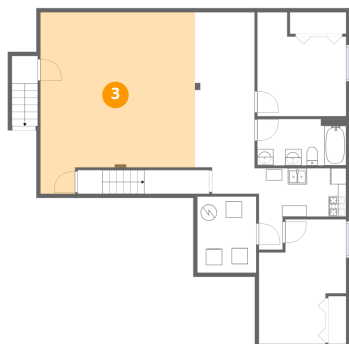
2 Floor 1 - Kitchen



Dimensions: 10'10" x 10'1"
Area: 77 sq. ft
Counted as living area: Yes

Heated: Yes
Finished: Yes
Enclosed: Yes
Contiguous: Yes
Permitted: Yes
Wet space: No
Addition: No
Conversion: No

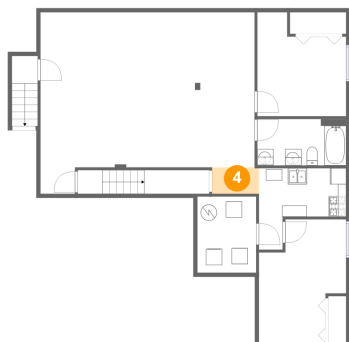
3 Floor 1 - Family Room



Dimensions: 19'2" x 22'6"
Area: 382 sq. ft
Counted as living area: Yes

Heated: Yes
Finished: Yes
Enclosed: Yes
Contiguous: Yes
Permitted: Yes
Wet space: No
Addition: No
Conversion: No

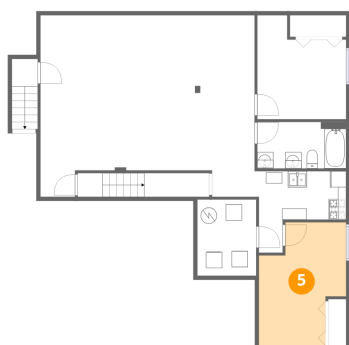
4 Floor 1 - Hall



Dimensions: 5'10" x 3'3"
Area: 19 sq. ft
Counted as living area: Yes

Heated: Yes
Finished: Yes
Enclosed: Yes
Contiguous: Yes
Permitted: Yes
Wet space: No
Addition: No
Conversion: No

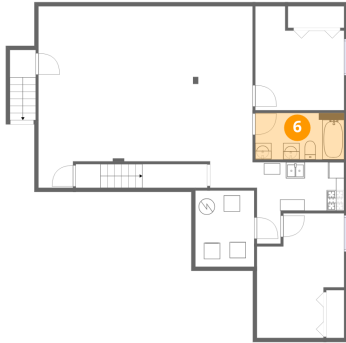
5 Floor 1 - Bedroom



Dimensions: 10'10" x 15'5"
Area: 138 sq. ft
Counted as living area: Yes

Heated: Yes
Finished: Yes
Enclosed: Yes
Contiguous: Yes
Permitted: Yes
Wet space: No
Addition: No
Conversion: No

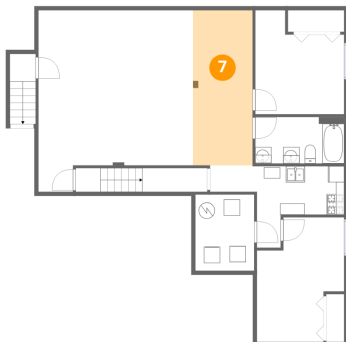
6 Floor 1 - Bath



Dimensions: 11'0" x 5'9"
Area: 64 sq. ft
Counted as living area: Yes

Heated: Yes
Finished: Yes
Enclosed: Yes
Contiguous: Yes
Permitted: Yes
Wet space: Yes
Addition: No
Conversion: No

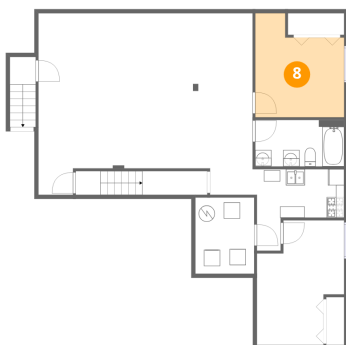
7 Floor 1 - Breakfast Nook



Dimensions: 7'5" x 19'3"
Area: 142 sq. ft
Counted as living area: Yes

Heated: Yes
Finished: Yes
Enclosed: Yes
Contiguous: Yes
Permitted: Yes
Wet space: No
Addition: No
Conversion: No

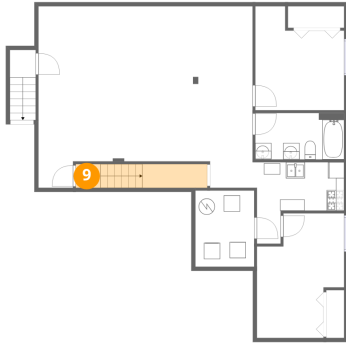
8 Floor 1 - Bedroom



Dimensions: 11'0" x 12'11"
Area: 120 sq. ft
Counted as living area: Yes

Heated: Yes
Finished: Yes
Enclosed: Yes
Contiguous: Yes
Permitted: Yes
Wet space: No
Addition: No
Conversion: No

9 Floor 1 - Hall



Dimensions: 16'4" x 2'11"
Area: 48 sq. ft
Counted as living area: Yes

Heated: Yes
Finished: Yes
Enclosed: Yes
Contiguous: Yes
Permitted: Yes
Wet space: No
Addition: No
Conversion: No

10 Floor 1 - Utility



Dimensions: 7'4" x 9'5"
Area: 69 sq. ft
Counted as living area: No

Heated: Yes
Finished: No
Enclosed: Yes
Contiguous: Yes
Permitted: Yes
Wet space: No
Addition: No
Conversion: No

11 Floor 2 - Covered Patio



Dimensions: 38'11" x 9'7"
Area: 352 sq. ft
Counted as living area: No

Heated: No
Finished: No
Enclosed: No
Contiguous: Yes
Permitted: Yes
Wet space: No
Addition: No
Conversion: No

12 Floor 2 - Kitchen



Dimensions: 9'6" x 11'1"
Area: 104 sq. ft
Counted as living area: Yes

Heated: Yes
Finished: Yes
Enclosed: Yes
Contiguous: Yes
Permitted: Yes
Wet space: No
Addition: No
Conversion: No

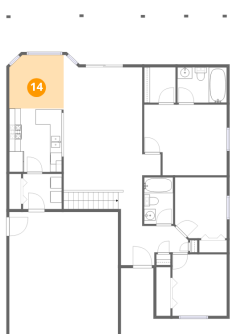
13 Floor 2 - Bath



Dimensions: 8'7" x 6'2"
Area: 53 sq. ft
Counted as living area: Yes

Heated: Yes
Finished: Yes
Enclosed: Yes
Contiguous: Yes
Permitted: Yes
Wet space: Yes
Addition: No
Conversion: No

14 Floor 2 - Dining Area



Dimensions: 9'6" x 9'4"
Area: 86 sq. ft
Counted as living area: Yes

Heated: Yes
Finished: Yes
Enclosed: Yes
Contiguous: Yes
Permitted: Yes
Wet space: No
Addition: No
Conversion: No

15 Floor 2 - Porch



Dimensions: 18'7" x 14'1"
Area: 148 sq. ft
Counted as living area: No

Heated: No
Finished: No
Enclosed: No
Contiguous: Yes
Permitted: Yes
Wet space: No
Addition: No
Conversion: No

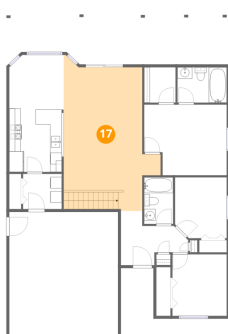
16 Floor 2 - Bedroom



Dimensions: 9'6" x 10'9"
Area: 102 sq. ft
Counted as living area: Yes

Heated: Yes
Finished: Yes
Enclosed: Yes
Contiguous: Yes
Permitted: Yes
Wet space: No
Addition: No
Conversion: No

17 Floor 2 - Living Room



Dimensions: 16'11" x 25'0"
Area: 355 sq. ft
Counted as living area: Yes

Heated: Yes
Finished: Yes
Enclosed: Yes
Contiguous: Yes
Permitted: Yes
Wet space: No
Addition: No
Conversion: No

18 Floor 2 - Laundry



Dimensions: 6'9" x 6'2"
Area: 41 sq. ft
Counted as living area: Yes

Heated: Yes
Finished: Yes
Enclosed: Yes
Contiguous: Yes
Permitted: Yes
Wet space: No
Addition: No
Conversion: No

19 Floor 2 - Garage



Dimensions: 19'0" x 21'5"
Area: 407 sq. ft
Counted as living area: No

Heated: No
Finished: No
Enclosed: Yes
Contiguous: Yes
Permitted: Yes
Wet space: No
Addition: No
Conversion: No

20 Floor 2 - Primary Bedroom



Dimensions: 14'5" x 12'4"
Area: 165 sq. ft
Counted as living area: Yes

Heated: Yes
Finished: Yes
Enclosed: Yes
Contiguous: Yes
Permitted: Yes
Wet space: No
Addition: No
Conversion: No

21 Floor 2 - Foyer



Dimensions: 11'9" x 9'5"
Area: 74 sq. ft
Counted as living area: Yes

Heated: Yes
Finished: Yes
Enclosed: Yes
Contiguous: Yes
Permitted: Yes
Wet space: No
Addition: No
Conversion: No

22 Floor 2 - Bedroom



Dimensions: 9'0" x 10'7"
Area: 93 sq. ft
Counted as living area: Yes

Heated: Yes
Finished: Yes
Enclosed: Yes
Contiguous: Yes
Permitted: Yes
Wet space: No
Addition: No
Conversion: No

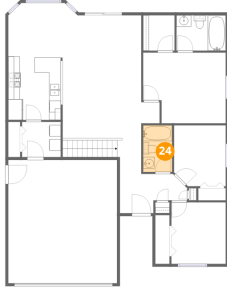
23 Floor 2 - W.I.C.



Dimensions: 5'6" x 6'2"
Area: 34 sq. ft
Counted as living area: Yes

Heated: Yes
Finished: Yes
Enclosed: Yes
Contiguous: Yes
Permitted: Yes
Wet space: No
Addition: No
Conversion: No

24 Floor 2 - Bath



Dimensions: 5'1" x 8'2"
Area: 41 sq. ft
Counted as living area: Yes

Heated: Yes
Finished: Yes
Enclosed: Yes
Contiguous: Yes
Permitted: Yes
Wet space: Yes
Addition: No
Conversion: No